



**King's  
Worcester**

# SCHOLARSHIPS & BURSARIES



A young woman with brown hair, wearing a dark blue school blazer with red piping and a white shirt, is seated and playing a cello. She is positioned in the center of a grand, ornate cathedral with high vaulted ceilings, Gothic arches, and a large rose window in the background. The floor is checkered, and the lighting is warm and dramatic.

# CONTENTS

---

- 3 Welcome from the Head
- 5 Awards/Scholarships and Definitions
- 6 Academic
- 7 Music
- 8 Sports
- 9 All-rounder Exhibition
- 10 Visual or Performing Arts Scholarship
- 11 Scholars' Support and Expectations
- 12 Bursaries

# WELCOME

---

At King's, we believe that talent, commitment and good character should always be recognised, rewarded and nurtured.

Scholarships at King's are held in high regard. Over the years, King's Scholars have contributed significantly to the life of the Foundation; many have gone on to make impressive contributions to society. Scholars are at the heart of the King's community, setting a positive example to the life of the School through their enthusiasm, intellectual curiosity and drive. Academic scholars are encouraged to achieve excellence through a wealth of enrichment opportunities such as national debating forums, national competitions and leadership opportunities, to name a few.

All-rounder Exhibitions are for those who are exceptionally talented, yet who fall outside the remit of our Scholarships. These are offered to enthusiastic contributors who will make a difference to the School across a range of disciplines. Our co-curricular provision encourages all pupils to aim high. Art and Drama provide extended opportunities for those performing at the highest level to showcase talent through Internal and External Events, performing in sell-out Drama productions and taking part in the Trinity College Arts Award programme.

In sport, our enviable Athlete Development Programme supplements the strong coaching, training, and competitive environment that exists at the School by providing a tailored, personal programme for our Sports Scholars.

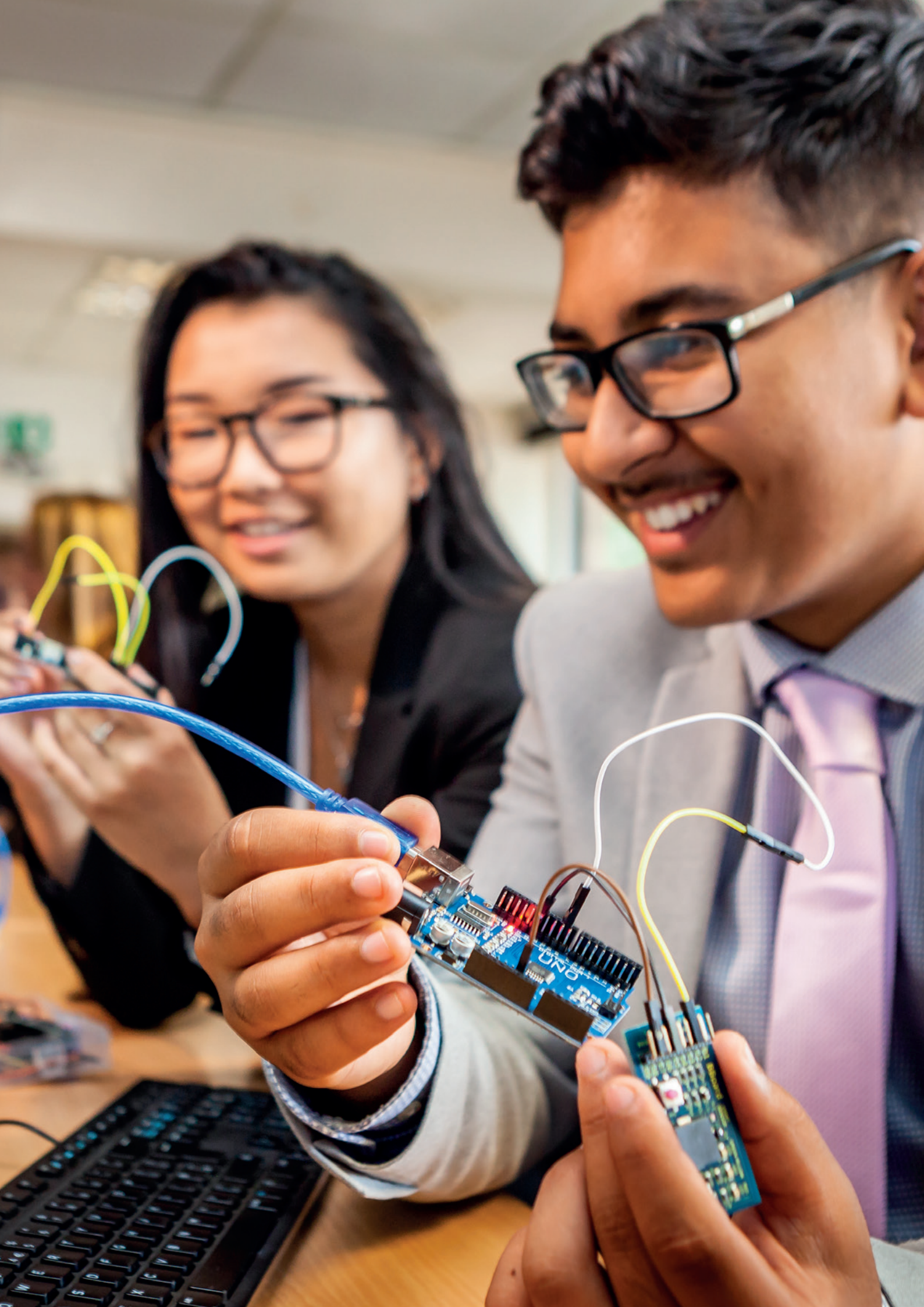
Although they take different forms, our Scholarships and Exhibitions have one aim, and that is to help to nurture and develop pupils' abilities to enable them to fulfil their true potential. All pupils at King's are inspired to learn, are motivated to achieve and are supported to be the very best version of themselves.

If you have any questions about our Scholarships, Exhibitions or Bursaries, please do contact our Registrar ([registrar@ksw.org.uk](mailto:registrar@ksw.org.uk)), who will provide you with more information where required.

**Mr Ben Charles**

Head of Foundation, The King's School, Worcester





# SCHOLARSHIPS/EXHIBITIONS BY ENTRY POINT

<p>11+</p>	<p>Sports Scholarship or Exhibition Academic Scholarship or Exhibition Music Scholarship or Exhibition All-rounder Exhibition</p>
<p>13+</p>	<p>Sports Scholarship or Exhibition Academic Scholarship or Exhibition Music Scholarship or Exhibition All-rounder Exhibition</p>
<p>16+</p>	<p>Sports Scholarship or Exhibition Academic Scholarship or Exhibition Music Scholarship or Exhibition All-rounder Exhibition Visual or Performing Arts Scholarship</p>

## DEFINITIONS

**Scholarship:** A scholarship is a fee remission award for pupils who show exceptional academic or musical ability.

**Exhibition:** Exhibitions are offered to pupils who show special promise in one particular subject or for general performance that is sound but not at scholarship level. These can be fee remissions, the provision of music lessons/kit allowance.

For existing pupils honorary scholarships may be awarded.

**Bursary:** A means-tested award provided to help families on a lower income support their academically able children (up to 100% of fees).



# ACADEMIC

11+	Academic Scholarships
13+	Academic Exhibitions
16+	

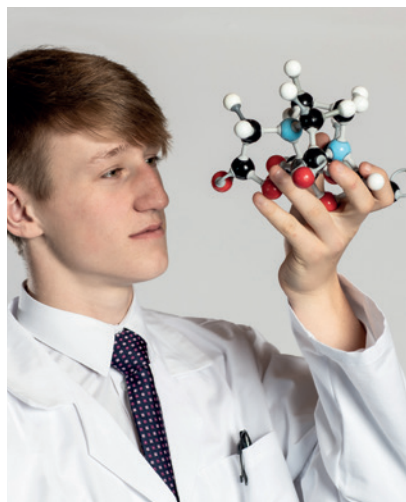
## Academic Scholarships

At King's we recognise and reward outstanding performance through the provision of scholarship awards. King's Scholars are sought-after roles. Those who are awarded scholarships are required to set a positive example to the life of the school through their enthusiasm, commitment, intellectual curiosity and drive.

The school offers academic scholarships to new entrants at our main joining points of 11+, 13+ and 16+ (Year 7, Year 9 and Year 12).

An academic scholarship is an award made to a child who shows a high level of academic attainment and intellectual curiosity in our entrance examinations.

All candidates sitting an entrance test at 11+, 13+ or 16+ at our main entrance testing are automatically considered for an academic scholarship. (11+ candidates from our Prep Schools should sit the 11+ Entrance tests to be considered).



## Academic Exhibitions

Academic Exhibitions may also be offered to those who show great promise but are not quite at the level of a scholarship. These will be in the form of fee remission.



- ♦ Scholarships are usually between 5% and 20% fee remission.
- ♦ Scholarships can also be supplemented by bursary funding.
- ♦ Pupils who are awarded scholarships and exhibitions continue to receive them throughout their time at King's Senior and Sixth Form, subject to continued effort. Performance is reviewed and assessed annually and scholars informed of their progress.

# MUSIC

11+	Music Scholarships Music Exhibitions
13+	
16+	



Music is a significant part of life at King's and the scope for musical involvement is vast. Historically the music department at King's has long been a centre of excellence and maintains strong links with Worcester Cathedral and the musical life of the city.

Through an active programme of class music, practical music examinations, co-curricular activities and over twenty concerts a year, the department has supported many pupils who have become professional performers, composers and conductors in both classical and popular music.

Those pupils who have a musical flair and passion could be eligible for music scholarships. There is a wide range of styles and genres of music, including orchestras, wind and jazz bands and solo concerts, allowing pupils to demonstrate and enhance their musical talents. In addition to this, there is access to outstanding music facilities, first class teaching and mentoring from three full time teaching staff and over twenty peripatetic music teachers.

## Music Scholarships

- Those awarded a music scholarship will be expected to play a full part in musical life at the school. The award will be retained as long as the pupil's academic and musical effort are of a high standard.
- Music scholarship assessment takes the form of an instrument or vocal performance of two contrasting pieces of music. If a second instrument is offered (which is by no means mandatory), one piece of music is required. It is expected that the candidate will be at the AB/TCL standard below on his or her chosen instrument.

11+ Grade 4

13+ Grade 5

16+ Grade 7 (Grade 5 for the second instrument)

## Music Exhibitions

- Exhibitions will be offered in the form of an allowance towards music lessons.

- Scholarships are usually between 5% and 20% fee remission and are accompanied by an allowance towards music tuition on the main instrument or voice.
- Scholarships can also be supplemented by bursary funding.

- Pupils who are awarded scholarships and exhibitions continue to receive them throughout their time at King's Senior and Sixth Form, subject to continued effort. Performance is reviewed and assessed annually and scholars informed of their progress.

# SPORTS

11+	
13+	Sports Scholarship
16+	Sports Exhibition



King's Worcester is synonymous with sporting excellence and our elite athletes play an important part in ensuring our continued success. Our sporting achievements are extensive, with teams and individual pupils regularly competing both at county and national level. We are proud not only of the fact that our current teams have been invited to play against some of the leading first-class sports schools across the country but also of the achievements of King's sporting Old Vigornians, many of who have completed a national and international level.

Pupils at King's benefit from a vast range of unrivalled sporting facilities, combined with expert, passionate coaches and mentors. Pupils also have the support of Form and House Tutors to help to ensure that they achieve the right balance between school commitments and sport.

We offer two types of awards that recognise and reward sporting excellence – Sports Exhibitions and Sports Scholarships.

## Sports Exhibition

Our Sports Exhibitions recognise the skills, ability and commitment of pupils to a specific sport. Pupils will have performed at a high level in two major sports and are likely to have attained representative honours beyond school. Sports Exhibitions usually are offered in the form of sports kit allowances.

## Sports Scholarships

Sports Scholarships will be awarded to those who demonstrate the ability to progress and achieve high levels of success within their chosen sport. Pupils should already be playing at or have the potential to reach county, regional or national level.

Sports Scholars are talented young men and women who relish the challenge of competing at highest levels of school sport. They are expected to lead by example, both off and on the field, and are required to set high standards in training and matches. Sports Scholars are enrolled on our Athlete Development Programme. Here they have the opportunity to take part in strength and conditioning sessions from our school Strength and Conditioning Coach, as well as mentoring and regular performance meetings.

## Assessments for Sports Scholarships and Exhibitions

Assessments for Sports Scholarships and Exhibitions will be by invitation. Pupils will be invited to a sports assessment, where they will be assessed in a series of physical activities including fitness, agility and the ability to adapt to specific sporting situations.

- Scholarships are usually between 5% and 20% fee remission.
- Those who are awarded Sports Exhibitions at 11+ will automatically be considered for honorary Sports Scholarships at 13+.
- Awards in the form of annual sports kit allowances may also be made.
- Scholarships can also be supplemented by bursary funding.
- Pupils who are awarded scholarships and exhibitions continue to receive them throughout their time at King's Senior and Sixth Form, subject to continued effort. Performance is reviewed and assessed annually and scholars informed of their progress.
- Existing pupils (with or without previous Sports Exhibitions) would be assessed at 13+ and 16+ level to be promoted to an honorary scholarship.

# ALL-ROUNDER EXHIBITION

11+	All-rounder Exhibition
13+	
16+	

We often have pupils who are exceptionally talented yet fall outside the remit of our Academic, Music and Sports Scholarships. We recognise the abilities and potential of these pupils by offering All-rounder Exhibitions. These awards will be made to enthusiastic contributors who will make a difference to the school across a range of disciplines.

- All-rounder Exhibitions are available for new entry candidates at 11+, 13+ and 16+. These awards provide a remission on fees and are offered at the discretion of the Head of Foundation.
- We are seeking pupils who have performed well in our entrance examinations and have a strong reference from their current school.
- We are looking for those who will make an outstanding contribution to the school community and show strong leadership potential and good, all-round skills.
- Candidates should display a genuine interest, enthusiasm and talent, and work or performances can be submitted in support of an application.
- Independent references must be provided.



# VISUAL OR PERFORMING ARTS SCHOLARSHIP (16+)

Our Visual or Performing Arts Scholarship programme aims to support committed and passionate pupils eager to refine and expand their theatrical or artistic skills.

The Drama and Dance Department at King's Worcester functions as a professional theatre space, hosting productions that consistently draw sold-out audiences. Students benefit from the guidance of an experienced team of drama, dance, and theatre technicians. Many alumni have gone on to build successful careers in various fields of the Performing Arts.

Our Art School offers a dynamic and inspiring environment that celebrates each student's individuality and artistic potential. Through our Scholarship programme, they embark on a rich and challenging journey of creative growth and self-discovery. We are committed to nurturing imagination, developing a broad range of artistic skills, encouraging critical thinking, and fostering independent thought. Pupils are supported in deepening their understanding of both historical and contemporary art, while exploring every aspect of art-making and visual expression.



Our Visual or Performing Arts Scholars are expected to set a high standard, inspiring their peers through leadership and dedication. In return, we provide exceptional coaching, nurturing the next generation of arts professionals.

- We are looking for potential; those with a passion for the performing arts and theatre or visual arts, those who are dedicated to honing their craft and creating dramatics of the highest standard.
- You are likely to immerse yourself in live arts experiences, regularly attending arts events, and drawing inspiration from the existing high quality work of others in the arts industry.
- We value individuals who will be good role models for others, who will lead by example, seize opportunities and lead their own projects.

Drama candidates will also have the opportunity to be part of the school's Spotlight Development Programme – this offers a unique opportunity for pupils to enhance their skills through core, classical repertoire (with an additional musical theatre strand available for selected pupils). Spotlight prepares pupils for future external auditions and instils a deep sense of accomplishment and growth.

Those in the arts will receive individualised specialist mentoring. The Art School hosts regular private viewings and exhibitions.

Visual or Performing Arts Scholarship Assessments will be by invitation. Drama pupils will take part in a Performing Arts Workshop (or present a theatre design portfolio) and have an interview with the Head of Drama. Art applicants will showcase their portfolio and have an interview with our Head of Art.



# SCHOLARS' SUPPORT AND EXPECTATIONS

## SUPPORT PROVIDED

The school provides a rich and varied environment designed to support and challenge all pupils, with particular opportunities and expectations for scholars.

### Academic Enrichment

In addition to the academic clubs open to all pupils, scholars are invited to participate in the academic enrichment programme. This programme is designed to broaden horizons and stimulate intellectual discussion. It runs throughout the year and features a variety of session styles and speakers, including staff, pupils, and external guests. Scholars are expected to attend and engage actively and thoughtfully in these sessions as part of their wider academic development.

### Sport

The school offers top-level coaching that enables pupils to reach their full potential, including at national level. Sport scholars have great opportunities to represent the school in fixtures and competitions and show consistent commitment to sport through games sessions and practice. Our Sports Scholars benefit from our Athlete Development Programme (ADP)- a distinctive and bespoke offering, which supplements the strong coaching, training, and competitive environment that exists at the school. Our ADP provides a tailored personal training programme and nutritional plan, termly lectures and coaching opportunities.

### Music

There is a wide range of opportunities to be involved in both co-curricular and academic music. Music scholars have the opportunity to contribute actively to the musical life of the school through ensembles, performances, and leadership in musical activities. The school's music instruction and mentoring programme supports pupils in accessing prestigious scholarships and awards, helping them to develop their talents to the highest level.

## EXPECTATIONS FOR SCHOLARSHIP PUPILS

As a scholarship pupil, you are expected to be a role model within the school.

For academic scholars, this means consistently demonstrating a high level of academic endeavour and contributing positively to the learning experience of others. Your conduct should always reflect the values of the school, and you should strive to be a good role model for your peers. The pastoral teams will support and guide you in fulfilling these expectations. Your role as a scholar is not only to reach your full potential but also to inspire and support your fellow students in their academic pursuits.

Music scholars are expected to contribute actively to the musical life of the school, participating in ensembles, performances, and other musical opportunities as ambassadors of excellence and enthusiasm.

Sport scholars are expected to represent the school in fixtures and demonstrate the highest standards of conduct and commitment to sport through regular attendance and effort in games sessions and practices.



# BURSARIES

King's recognises the significant sacrifice that many parents make to enable their children to benefit from an independent school education. We passionately believe that talented children should be able to enjoy all that a King's education can offer, regardless of background or parental income. Our bursaries can amount up to to 100% of school fees, and are means-tested. They are specifically targeted towards those applicants who would benefit most from this life-changing opportunity, and many of our most successful pupils are testament to our bursaries' success.

Entrance Bursaries are awarded primarily to pupils entering the school at the ages of 11, 13 and 16. Depending on the availability of funds, Entrance Bursaries may be awarded to a pupil entering the senior school at other ages. Entrance Bursaries would not usually be available to children entering at a prep school level other than in exceptional circumstances.

## Who decides on the level of bursary awarded?

King's bursaries are decided by a panel who meet to review applications and the level of awards. The members of the panel are from the School leadership team and the Finance Department.

## Does a bursary last a pupils whole school career?

Bursaries are reassessed annually and, assuming financial circumstances do not change, it is usual for a pupil to receive a bursary from the date of award until they leave.



## Who is eligible?

- We often have high demand for our bursaries and, as such, it is not usually possible to offer funding to all those who apply for a bursary and get offered a place. When distributing the bursary funds, we also take into account a pupil's academic performance.
- The granting of a bursary is discretionary. In making our decisions, we consider a wide range of financial circumstances, including, but not limited to, parental/guardian income (from all sources), assets (including personal property) and other matters that are particular to the pupil such as family circumstances.
- The value of financial support given can be up to 100% of full school fees\*. Grants may also be available to cover or contribute towards the costs of items such as school lunches, uniform, travel costs, equipment required for educational, sports or co-curricular activities, foreign exchange and other educationally important activities.
- At King's we treat each application individually and we do not publish a scale of fees payable based on household income.

\*but will be means tested to fit each family and circumstance.

## How to apply

To apply for a bursary form, please contact the registrar on 01905 721742 or [registrar@ksw.org.uk](mailto:registrar@ksw.org.uk). The closing date for bursary applications for the academic year entry is in November prior to testing. Please visit the website [www.ksw.org.uk/bursaries](http://www.ksw.org.uk/bursaries) for specific closing dates.

*“ I doubt I would have been able to follow that path if it wasn't for King's and the bursary scheme it provides... It's made such a difference to my path in life. Being able to stay and do well has meant I've been able to go on to Oxford University and to the Royal Academy of Music. ”*

Jolyon Loy, Opera Singer

*“ Bursaries are important because they allow individuals such as myself who may have the ability to achieve great things but might not have the financial means, to be put into an environment where they will be able to flourish and achieve. ”*

Michael Samuleson-Beulah, Cambridge University Student



# ANY QUESTIONS? PLEASE GET IN TOUCH.

---

Whether it be a Scholarship, Exhibition or Bursary, we would be very happy to answer any questions you may have and explain how they can help you. Just contact the Admissions Team on **01905 721742** or email [registrar@ksw.org.uk](mailto:registrar@ksw.org.uk), and we'll be glad to help.

---



# King's Worcester

[ksw.org.uk](http://ksw.org.uk)

The King's School  
5 College Green  
Worcester  
WRI 2LL  
t: 01905 721 700  
e: [info@ksw.org.uk](mailto:info@ksw.org.uk)

The King's School, Worcester: A company limited by guarantee, registered in England.  
Registered office: 5 College Green, Worcester WRI 2LL. Company No: 4776324. Registered charity No: 1098236.

The information, terms and conditions set out in this prospectus and all occasional papers may be amended from time to time, and their provisions, subject to any such amendments, shall continue to apply for the whole period during which a boy or girl continues to attend the School, irrespective of his or her age.

