

# Year 11 Exam Results 2017 Summary

In the week following the publication of the Year 11 exam results, data was collected from **507** Independent Schools Council schools covering a total of **36,768** candidates. This is based on the first provisional data and is subject to change due to appeals and remarks. Visit <http://www.isc.co.uk/research> for more details.

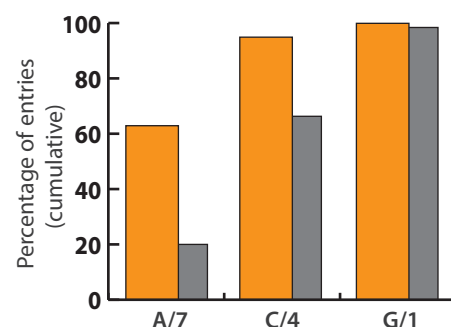
## Over 60% of entries awarded A\*/A or 9/8/7 - three times the national average

This year's GCSE and IGCSE results from ISC schools show that **62.9%** of entries were awarded either an A\*, A, 9, 8, or 7 grade (nationally **20.0%**)<sup>1</sup>.

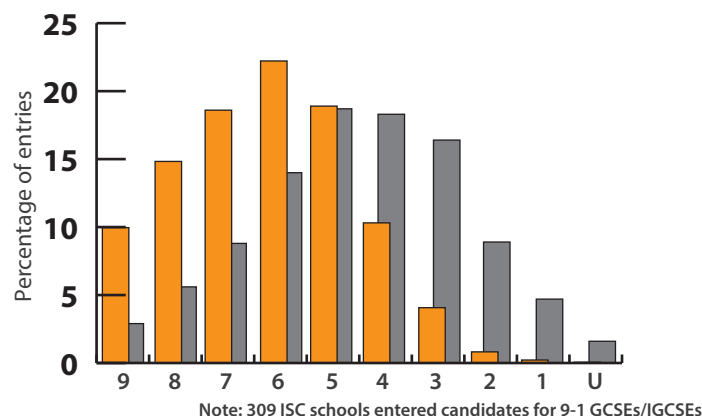
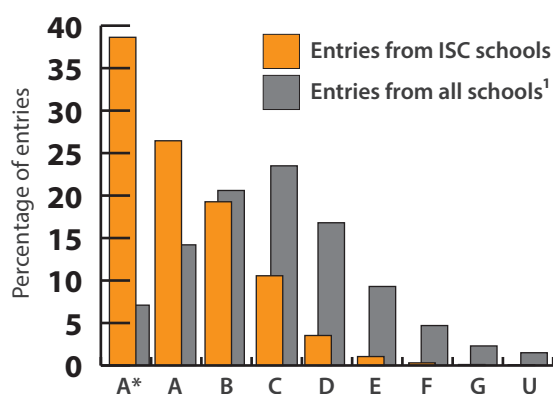
Candidates took on average **9.6** entries, and achieved an average points total of **64.1**, which corresponds to **one A\*s and eight As**. The average entry result was **6.7**, which is closer to an A than a B.

The chart on the right shows our schools' overall performance using the common grade boundaries of A and 7, C and 4, and G and 1.

The charts below show the detailed breakdown for A\*-G and 9-1 GCSEs and IGCSEs.



<sup>1</sup> Source: The Joint Council for Qualifications (JCQ) (GCSEs only)  
ISC's figures include GCSE and IGCSE results



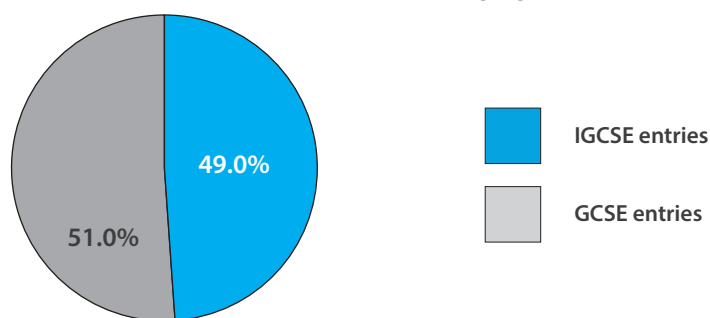
Note: 309 ISC schools entered candidates for 9-1 GCSEs/IGCSEs

## Nearly half of all entries were IGCSEs

ISC schools reported the results for **172,572** IGCSEs and **179,260** GCSEs. Meaning IGCSEs therefore account for **49.0%** of Year 11 entries.

Pupils typically take a mixture of GCSE and IGCSE subjects and in 2017, the vast majority of pupils (**87.2%**) obtained at least one IGCSE result.

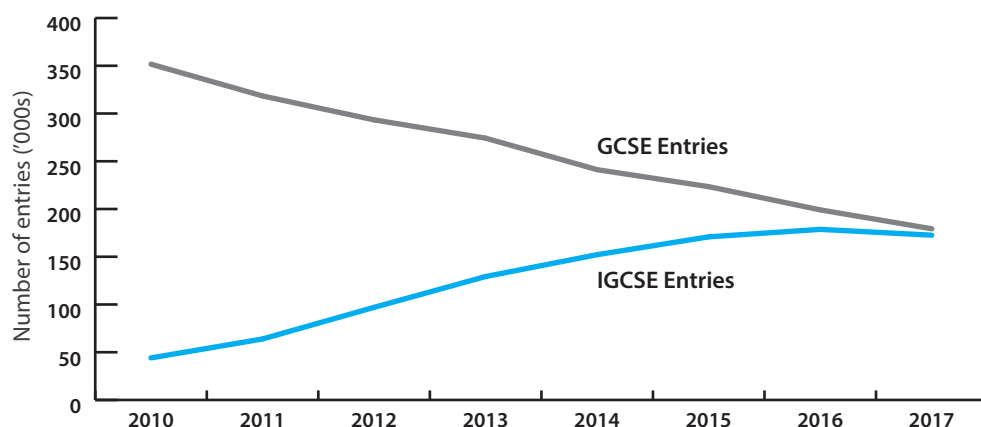
The proportion of GCSE and IGCSE entries from pupils at ISC schools:



## ...and the proportion of schools offering the IGCSE continues to rise!

Pupils at ISC schools took fewer GCSEs this year, as more schools offer the alternative IGCSE; **86.0%** of schools reported at least one IGCSE result.

Since 2010, there has been a significant drop in the number of GCSE entries taken by pupils, a loss of **49.0%**. In the same time period, the number of IGCSE entries more than quadrupled. Two schools offered only IGCSEs this year.



Based on information from ISC's Year 11 exam result press releases for each year, not on a like-for-like basis