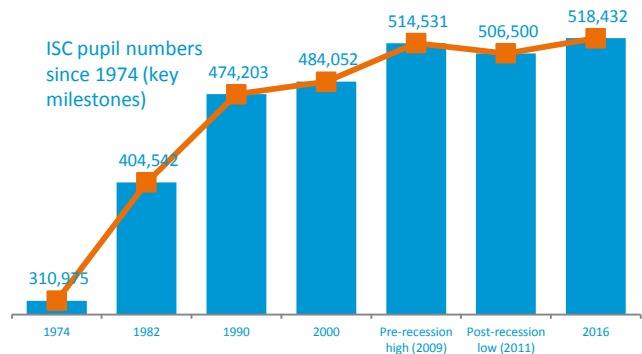


Highest number of pupils since records began in 1974

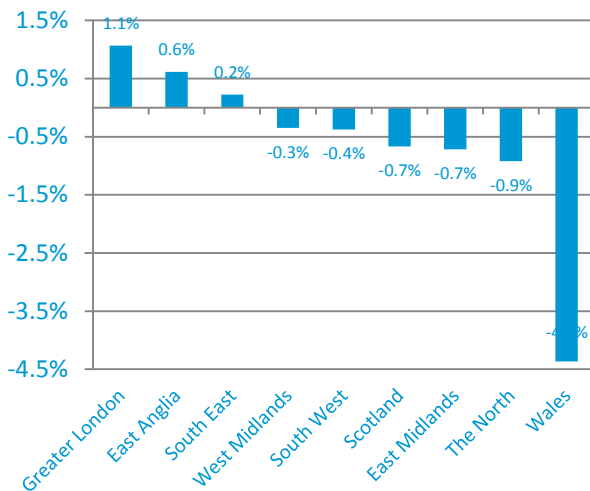
- There are now a record 518,432 pupils at 1,280 ISC member schools, up from 517,113 in 2015.
- At the 1,249 schools completing the Census in both 2015 and 2016, pupil numbers have risen by 0.1%.
- The most significant variations are regional with some areas experiencing increases in pupil numbers and others reductions in pupil numbers.



There are no significant changes within different subsets of pupils:

- No change in the proportion of overseas pupils (overseas pupils account for 5.3% of all pupils this year, the same proportion as last year).
- Marginal shift in the number of boarding pupils (boarding pupils account for 13.6% this year, compared to 13.7% last year).
- Marginal shift in the number of pupils attending co-educational schools (74.7% this year, 73.9% last year).
- A higher proportion of pupils with SEND were recorded this year (13.2% of all ISC pupils are recorded as having SEND compared to 12.8% last year). This might reflect the inclusion of a wider range of emotional SEND this year.
- The proportion of minority ethnic pupils has increased to reflect general population trends (from 29% last year to 30% this year).

Annual growth in pupil numbers split by region (like-for-like*)



* Those schools completing the Census in both 2015 and 2016

Lowest fee increase since 1994 and increasing amount of fee assistance

- Average fee increases this year were 3.5% in line with last year and the lowest since 1994.
- More than £850m was provided in fee assistance for pupils at ISC schools, an increase of 2.6% compared to last year.
- More than £700m of this £850m came directly from ISC schools, an increase of 3.3% compared to last year.
- Almost £400m related to means-tested assistance, 9% higher than last year.
- 5,629 pupils paid no fees at all

An estimated 160,000 state pupils benefiting from ISC / state school partnerships

Breakdown of facilities at ISC schools

	Number of schools	% of all ISC schools
All-weather athletics track	54	4.2%
Astroturf	576	45.0%
Concert hall/theatre	672	52.5%
Dance studio	370	28.9%
Fitness centre	380	29.7%
Rowing facilities	69	5.4%
Sports centre	568	44.4%
Sports fields	872	68.1%
Squash courts	210	16.4%
Swimming pool	599	46.8%
Tennis courts	781	61.0%

- 1,112 ISC schools are currently in partnership with state schools, 39 more schools than last year
- The types of partnerships vary, from academy sponsorship, to seconding teaching staff to serving as governors at state schools (see next page)
- Each of the 1,112 schools works with approximately 140 state pupils on average. Assuming no overlap that equates to approximately 160,000 state pupils benefitting from ISC partnerships.

- Whilst some ISC schools are very facility rich, many are not. For example, collectively there are only 54 all-weather athletics tracks in all ISC schools. Assuming all these were shared with state schools, they would only serve a small fraction of the 25,000 state-funded schools in the UK. Collectively, 1,337 facilities are shared with local state schools.
- Beyond partnerships with state schools, between £10m and £15m was raised for charities at ISC schools this year and 799 ISC schools organise volunteering opportunities for their staff and / or pupils.

Number of state-funded schools benefiting from partnership activities

Number state schools	Number ISC schools	% ISC schools
1-10	896	80.7%
11-20	121	10.9%
21-30	39	3.5%
31 +	52	4.7%
	1,112	100%

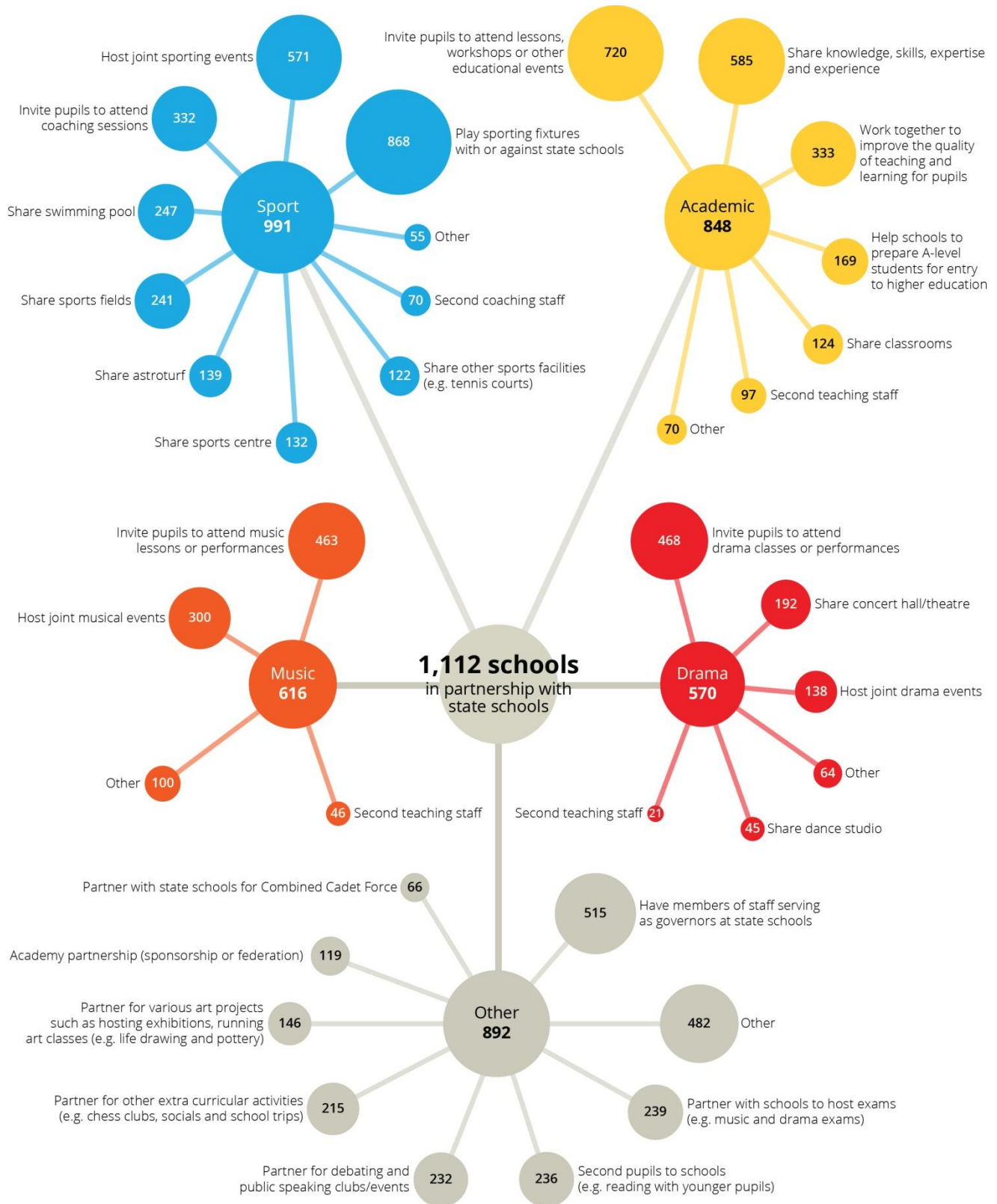
Number of state-funded pupils benefiting from partnership activities

Number state pupils	Number ISC schools	% ISC schools
I don't know	166	15.0%
20 or fewer	103	9.3%
20 to 50	195	17.6%
50 to 100	218	19.6%
100 to 200	208	18.7%
200 to 500	121	10.9%
500+	97	8.7%
	1,112	100%

Census & Annual Report Snapshot 2016

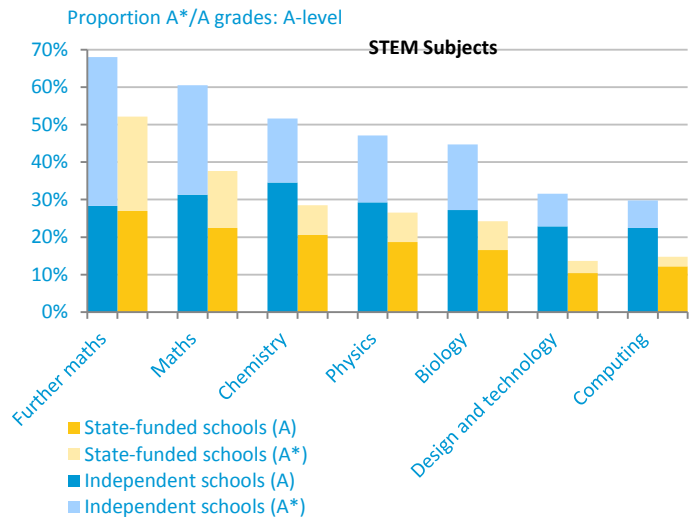


independent schools council

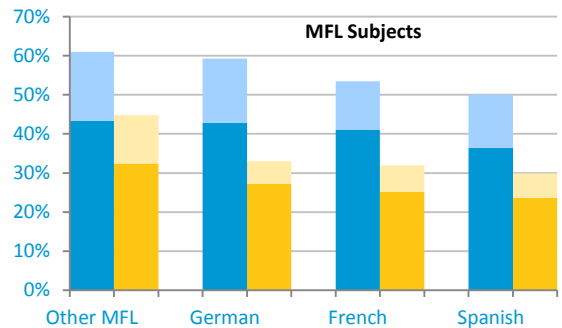
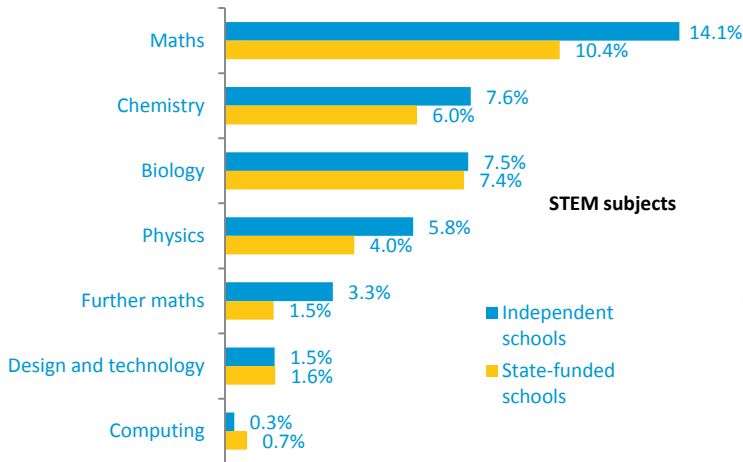


Over representation in key STEM and MFL subjects. Evidence of non-academic offerings and character education to explain attainment gaps

- Independent schools enter a disproportionate number of pupils for most STEM subjects and all MFL (compared to state-funded schools). For some subjects, such as French and further maths, independent schools enter nearly twice as many candidates proportionately.
- As with the aggregate results for all subjects published in August, attainment gaps exist for key STEM and MFL subjects. For example, at chemistry A-level 52% of independent schools entries were awarded A* or A compared to 29% of state entries.



A-level entries as a proportion of all entries



The recent report produced by the Centre for Evaluation and Monitoring at Durham University concluded that attainment gaps remain even after allowing for prior ability and socio-economic status. New Census questions this year provide some evidence that this could be explained by the investment of ISC schools in developing “soft” skills in their pupils.

- We estimate that ISC pupils on average spend 4-5 hours a week engaged in sport activities. This compares to less than 2 hours a week nationally. In addition, we estimate that ISC pupils spend on average 1-2 hours a week in performing arts activities.

- Over half of ISC schools (717) reported that they have a formal character education programme in place.

