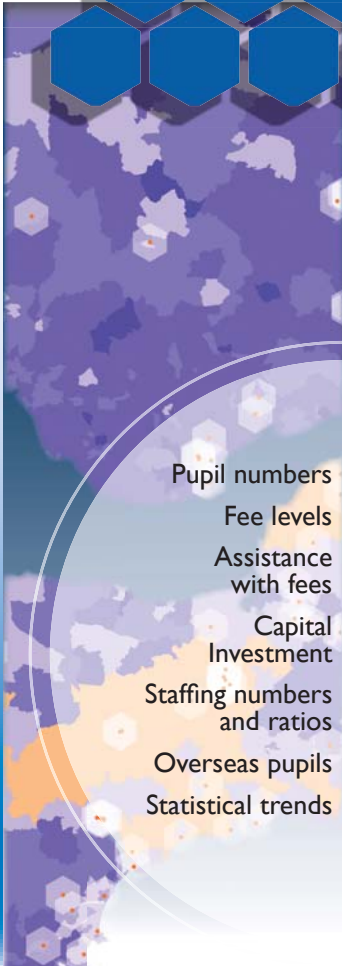


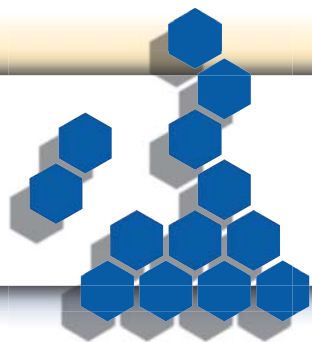


ISC Census 2006

INDEPENDENT SCHOOLS COUNCIL



Pupil numbers
Fee levels
Assistance
with fees
Capital
Investment
Staffing numbers
and ratios
Overseas pupils
Statistical trends



ISC 25th Census 2006

This report is based on a survey of all 1,270 ISC schools carried out in January 2006 amongst schools which are members of the constituent associations of ISC. The information relates to January 2006, except that expenditure on buildings and equipment is for the financial year ending at various dates in 2005.

ISC constituent associations are: the Association of Governing Bodies of Independent Schools (AGBIS), the Girls' Schools Association (GSA)*, the Headmasters' and Headmistresses' Conference (HMC)*, the Society of Headmasters and Headmistresses of Independent Schools (SHMIS)*, the Incorporated Association of Preparatory Schools (IAPS), the Independent Schools Association (ISA) and the Independent Schools' Bursars Association (ISBA)

* Governing bodies of most schools in membership of GSA, HMC and SHMIS, and some in membership of other associations, are members of AGBIS.

We would like to thank Julian Bewick at Monkton Combe Computing Service for his help in producing this census. Having produced the census for the previous 24 years Julian's support was invaluable in collating accurate information for the tables in this report.

Headline Results



Independent sector fights off demographic downturn to increase numbers:

- Pupil numbers are up by 1,300. Since 2001 the number of school-age children in the UK has fallen by 103,173. Had ISC schools followed this trend they would now have 22,000 fewer pupils than is actually the case.

Sixth form recruitment continues to rise:

- Despite media concerns about discrimination against independent school pupils in gaining entry to top universities, sixth form recruitment remains healthy. Numbers are up by 1.4%.

Number of new overseas pupils up:

- There has been an 11% rise in overseas students driven by 20-30% increases from European countries. This reverses last year's fall.

Lowest ever teacher/pupil ratio:

- There is now one teacher for every 9.87 pupils in ISC schools – a new record.

Highest number ever going on to higher education:

- 93.1% of post A-level pupils went on to higher education this year.

Number of pupils with fee assistance from schools up:

- More than 24% of pupils receive help with their fees from schools; this is worth £286 million annually.

Fee rise lowest for 7 years:

- At 5.7% the average fee rise is the lowest since 1999.

Contents

Pupil Numbers	3
Teacher/Pupil Ratio	6
School Fees, Capital Expenditure	7
Contributions to Fees	9
Entrance to Higher Education	10
Overseas Pupils	11
School Trends	12

‘Census in Detail’ Contents

Number of pupils <i>boarding and day pupils in census</i>	13	Overseas parents <i>new pupils whose parents live overseas</i>	19
Number of pupils <i>boarding and day pupils comparative figures</i>	13	Fees paid from overseas sources	19
Number of pupils by associations <i>total boarding and day pupils comparative figures</i>	14	Post A-level leavers	20
Number of pupils <i>figures for January 2006 and changes since 2005</i>	15	Sizes of schools	20
All numbers and fees by areas	16	Boarding / Day ratios	21
Earnings increases <i>teacher awards, average termly fees</i>	16	Boy / Girl ratios	21
Range of fees	17	Staff and pupils <i>numbers and ratios</i>	22
Contributions to fees <i>number of pupils receiving contributions to fees</i>	18	Full-time staff changes	23
New buildings and equipment	18		

Pupil Numbers

Independent Schools Buck the Trend

Overall pupil numbers in ISC schools have increased to 505,450 from 504,141 in 2005. 68,409 current pupils are boarders and 437,041 day pupils. They attend 1,270 schools belonging to the heads' associations within the Independent Schools Council. 1,054 (83%) of these schools have charitable status. Pupils in ISC schools account for more than 80% of the total number of pupils in independent schools in the UK. The UK independent sector as a whole educates 620,000 children in around 2,500 independent schools.

That numbers in ISC schools have continued to rise over the past few years (except for a small dip last year) is a considerable achievement given the decrease in the total number of pupils in the UK. Since 2001 there has been a fall of 103,173 (or 1.4%) in the number of pupils in England and Scotland (the only UK countries for which figures are available). This fall would have been a lot greater but for an increase in the number of post-16s continuing in secondary education. In primary schools, where demographics are the only consideration, numbers have fallen by 231,981 (4.8%) since 2001. In ISC schools the number of pupils has gone up by 13,508 (2.7%) since 2001 and even at primary level numbers have fallen by just 436 pupils (0.3%). Had numbers in ISC schools followed the national trend they would have a total of 483,055 pupils (22,395 fewer than is the case). The sector has also made up the loss of pupils from the Assisted Places Scheme, which helped 40,000 children at its peak.

The number of pupils boarding has risen slightly this year from 68,255 to 68,409, and has remained stable since 2000, following a lengthy series of falls since the mid-1980s. The rise this year is attributable to the increase in overseas students. The longer term stabilisation is due to the trust parents and pupils have in today's boarding education and to a diversity of boarding styles offered by some schools which has allowed pupils to board with the flexibility expected by many parents in the 21st century.

All further comparisons in this report are made between the 1,255 schools which participated in both the 2005 and 2006 surveys. In these schools there are 502,416 pupils in 2006 compared with 502,090 in 2005, a rise of 326 (0.1%).

- In the nursery age range (2-4) numbers fell slightly from 41,227 to 40,983 (0.6% fall).
- In the primary age range (5-10) numbers again dropped a little from 160,921 to 159,369 (1% fall).
- In the secondary age range (11-15) numbers rose from 221,847 to 222,899 (0.5% rise).
- In the sixth form age range (16-19) numbers rose from 78,095 to 79,165 (1.4% rise).

Many schools belong to more than one ISC association. Apart from Table 2B each school is recorded in one association only so as to avoid counting the same school and its pupils more than once. Table 2B shows the full membership of schools and pupil numbers for each heads' association. There are no overall totals in this table as this would involve double counting.

Fig 1 • Total schools and pupils

		Number	% of total
Number of member schools		1,270	
Charities		1,054	83.00%
Others		212	16.70%
PUPILS	BOARDERS		
	Boys	39,802	7.90%
	Girls	28,607	5.70%
	Total	68,409	13.50%
DAY	Boys	218,512	43.20%
	Girls	218,529	43.20%
	Total	437,041	86.50%
ALL	Boys	258,314	51.10%
	Girls	247,136	48.90%
	Total	505,450	

Refer to Table 1 in 'Census in Detail'

Fig 2 • ISC Census 2006: Changes since 2005

		Number	% change since 2005
Number of schools compared		1,255	
PUPILS	BOARDERS		
	Boys	39,616 39,814	-0.5
	Girls	28,428 28,402	+0.1
	Total	68,044 68,216	-0.3
DAY	Boys	217,105 216,709	+0.2
	Girls	217,267 216,655	+0.3
	Total	434,372 433,364	+0.2
ALL	Boys	256,721 256,523	+0.1
	Girls	245,695 245,057	+0.3
	Total	502,416 501,580	+0.2

Note: Results from schools in the current year are compared with the same schools' results in 2005. That is why the number of schools included in Fig 1 (and Table 1 in the Appendix) differs from the number in this and subsequent comparative tables.

Refer to Table 2 in 'Census in Detail'

Fig 3 • ISC Census 2006: Changes since 2005

Age, 31/8/05	Number	% change since 2005
-2	7,572	+6.6%
3	14,012	-0.2%
4	19,399	-3.4%
0 - 4 (Cumul.)	40,983	-0.6%
5	21,125	-3.5%
6	22,711	-0.8%
7	25,939	-0.5%
8	28,222	+2.7%
9	29,496	-1.1%
10	31,876	-2.7%
5 - 10 (Cumul.)	159,369	-1%
11	42,125	+2.5%
12	42,772	-2.9%
13	45,338	-0.9%
14	46,596	+1.2%
15	46,068	+2.5%
11 - 15 (Cumul.)	222,899	+0.5%
16	38,575	+0.6%
17	35,990	+2.4%
18	4,078	+2.3%
19	522	-12.3%
16 - 19 (Cumul.)	79,165	+1.4%

Refer to Table 3 in 'Census in Detail'

Fig 4 • Annual change in numbers since 1985

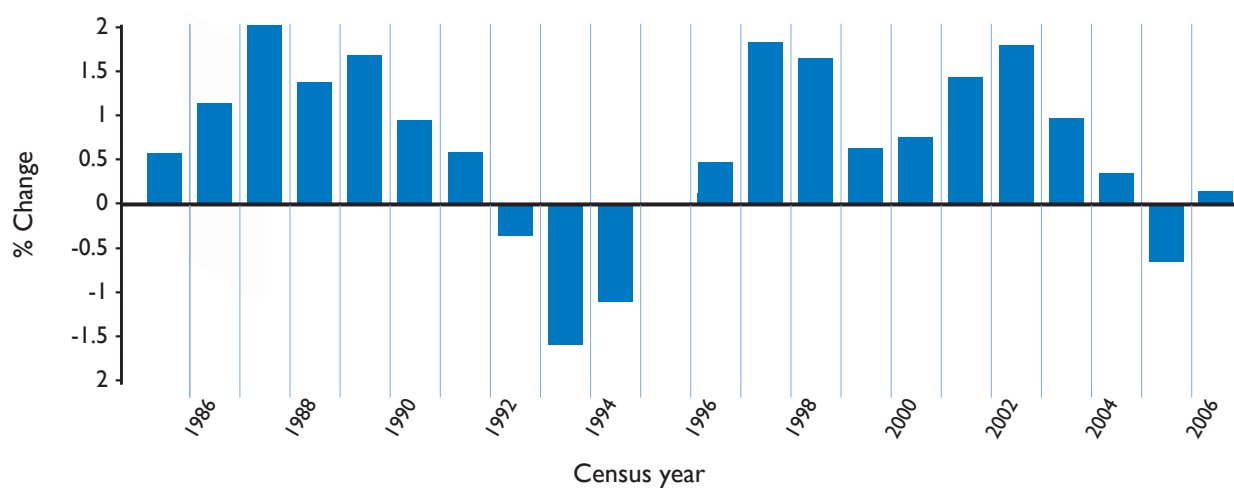
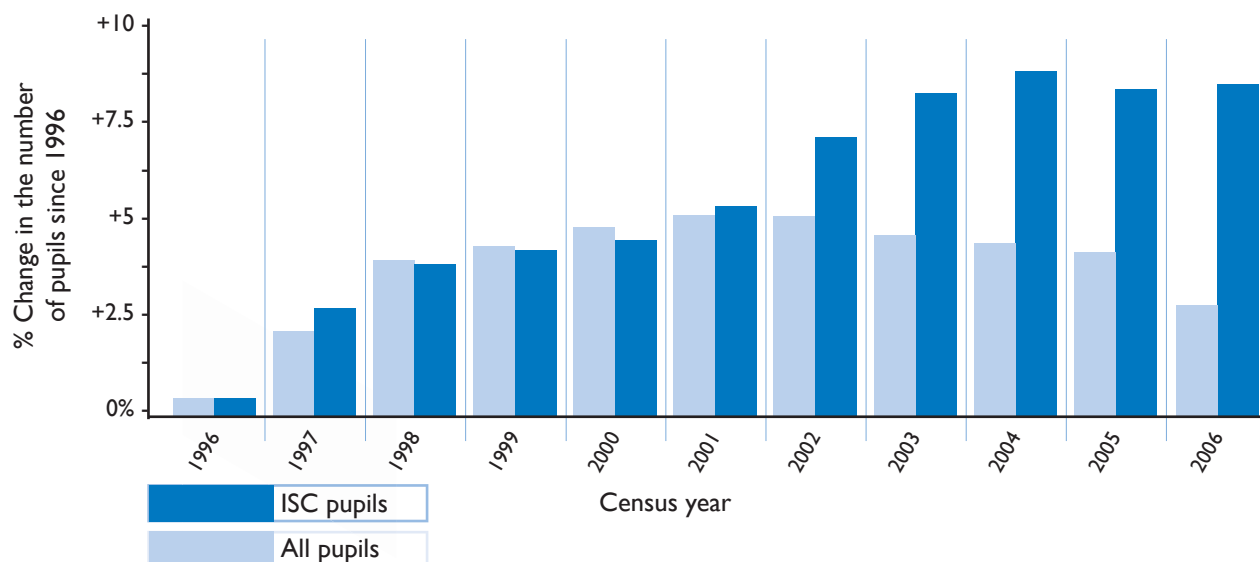


Fig 5 • Independent schools and demographic trends 1996 - 2006





Teacher/Pupil Ratio

2006 sees another rise in the number of full-time teachers to 44,618 up from 44,104 (1.2%) in 2005. The number of hours worked by part-time teachers has also increased from 200,872 to 204,001 (1.6%). This has led to another fall in the teacher/pupil ratio to 9.87 from 9.98 in 2005. The weighted teacher/pupil ratio (with each sixth former counted as two) was 11.38; down from 11.50 last year.

The continuing fall in the teacher/pupil ratio indicates two things. First, the importance to parents with children at ISC schools of low class sizes and secondly ISC schools' determination to continue to teach a wide range of subjects even if uneconomic. Many schools, especially at sixth form level, keep subjects such as classics and music on the curriculum, despite very small class sizes, because they do not want to limit their pupils' options.

Table 15 records full-time staff changes during the year – teaching staff taking up appointments in ISC schools from other independent schools, maintained schools, universities and other sources. Teacher turnover, as a proportion of the number of full-time staff employed remained relatively constant at 13.6%. A total of 3,464 teachers moved between independent schools. A further 1,870 teachers from maintained schools took up posts in ISC schools, while 608 moved from ISC schools into the maintained sector.

Fig 5 • Teachers & Teacher/Pupil ratio

Teachers (Full-time only)		Number	% change since 2005
Men		19,310	+0.7%
Women		25,308	+1.7%
TOTAL		44,618	+1.3%
Teachers (Part-time)		Number	% change since 2005
Men		2,652	+4.3%
Women		11,560	+0.2%
TOTAL		14,212	+0.9%
Teachers (FT & FTE)		Number	% change since 2005
Men		20,346	+0.9%
Women		30,548	+1.6%
TOTAL		50,894	+1.3%
Teacher/Pupil Ratios		2006	2005
Raw		9.87	9.98
With sixth form weighting *		11.38	11.5

* Each sixth form pupil counted as two

School Fees, Capital Expenditure

Lowest Fee Rise Since 1999

Fee increases in 2005-06 averaged 5.7%. This is the lowest average rise recorded since 1999. Average termly fees are shown below and in detail in Tables 4 and 5. It is worth noting that the figures are based on the maximum fees charged by each school. Many children in each school will not pay the maximum (for example, junior school pupils are likely to pay less than sixth formers). This means that the averages stated below will overstate the actual average fee paid by parents.

Fees for day pupils in boarding schools are usually higher than for day pupils in all-day schools because teacher/pupil ratios are higher in schools with boarders and there is a longer school day and, in many cases, school week.

Table 5 compares percentage increases in average day and boarding fees over a five-year period with increases in average earnings and teachers' pay. It does not give a full picture of teachers' pay, however, because it records only the national award, not the incremental payments which most teachers receive, or the extent to which independent schools (particularly those with boarders) pay more than national pay scales.

Increased staff costs are the chief determinant of annual fee rises. Salaries of teachers and other staff are the largest items of school expenditure, accounting for around two thirds of a school's costs. This year many of the other costs such as utilities bills and insurance that make up the remaining third have increased well above RPI. Energy prices, especially, have increased by up to 20%.

Finally, fee increases have financed another improvement in the teacher/pupil ratio (see previous page) and there has been continued capital expenditure on new and improved buildings and equipment. During 2005 schools spent £551 million or £1,097 per pupil (compared with £546 million, or £1,086 respectively in 2004). See Table 8 for further details.

Fig 6 • Fees January 2006

	£	% change since 2005
Boarding	6,646	+5.6%
Day fee/boarding schools	3,504	+5.7%
Day fee/day schools	2,722	+5.8%
Day fee average	2,970	+5.8%
Overall average	3,456	+5.7%

Refer to Table 4 & 6 in Census in Detail

Fig 7 • Fees since 1995

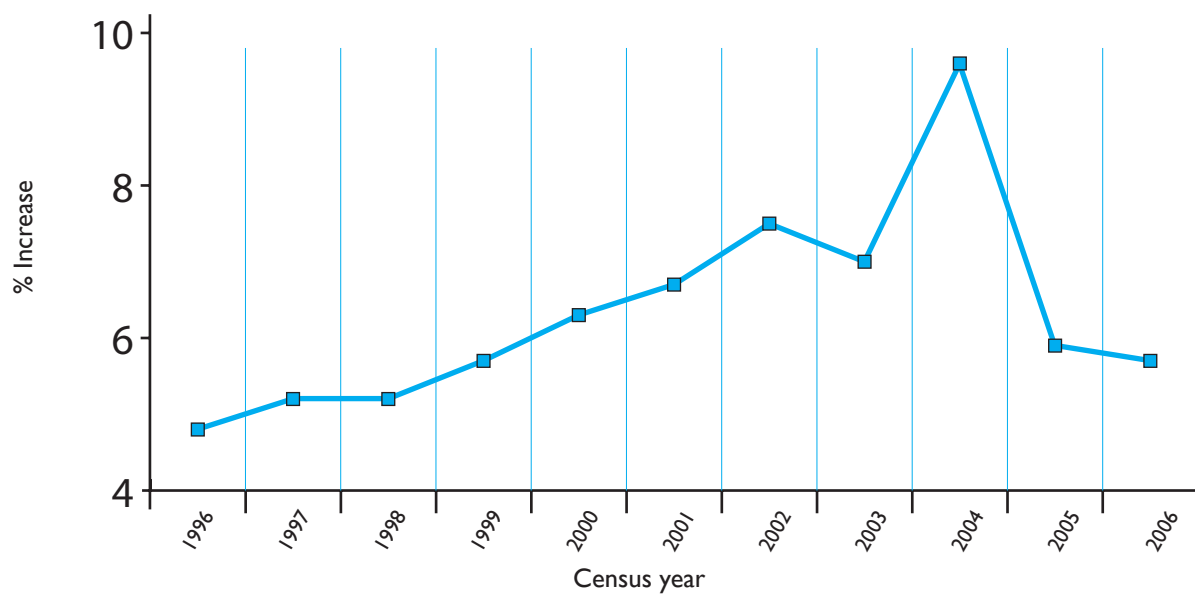
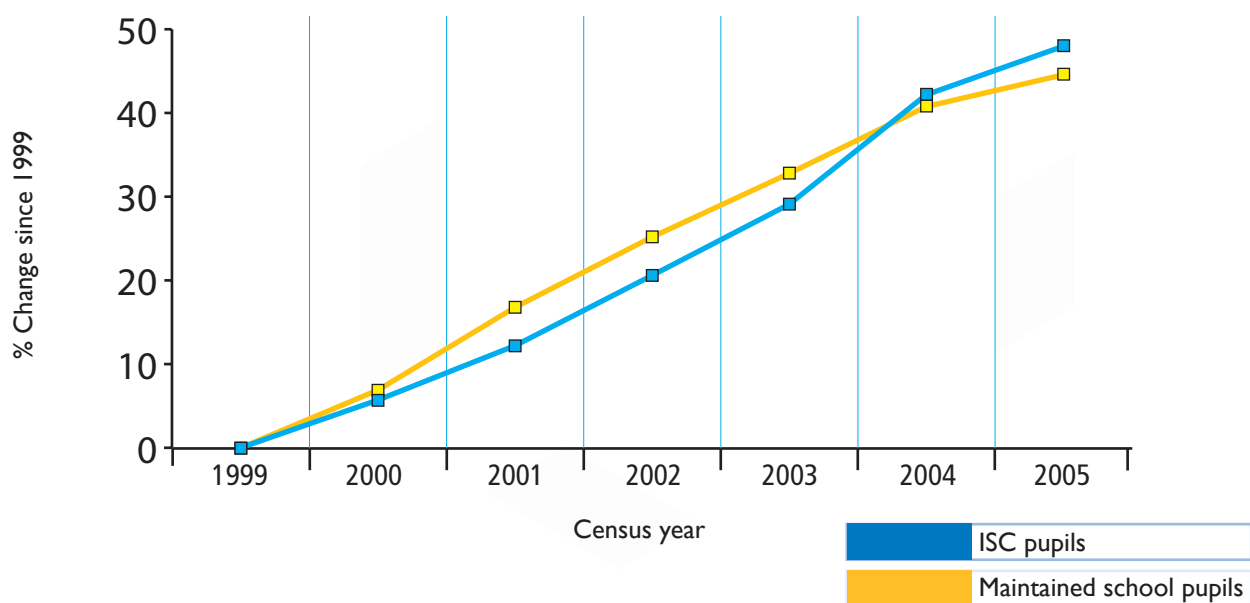


Fig 8 • School fees/maintained school costs since 1999



Contributions to Fees

The number of pupils who are helped with their fees has increased by 2,611 (1.6%): up from 159,979 to 162,590. This now represents 32.4% of all pupils in ISC schools (compared with 31.9% in 2005). 74% of these pupils are helped by their school: up from 117,806 to 120,941. This is a rise of 3,135 (2.6%). 24.1% of all children in ISC schools receive financial help from their school: up from 23.5% last year.

The increasing number of children receiving help with fees from schools is a trend that began in the recession of the early 1990s as more families needed bursaries to enable pupils at crucial examination stages to remain at the school. It has been boosted in recent years as schools have provided more financial help to compensate for the loss of Government Assisted Places. Since numbers on assisted places reached their zenith of 40,331 in 1998, the number of pupils helped by schools has increased by 32,547: almost making up the difference.

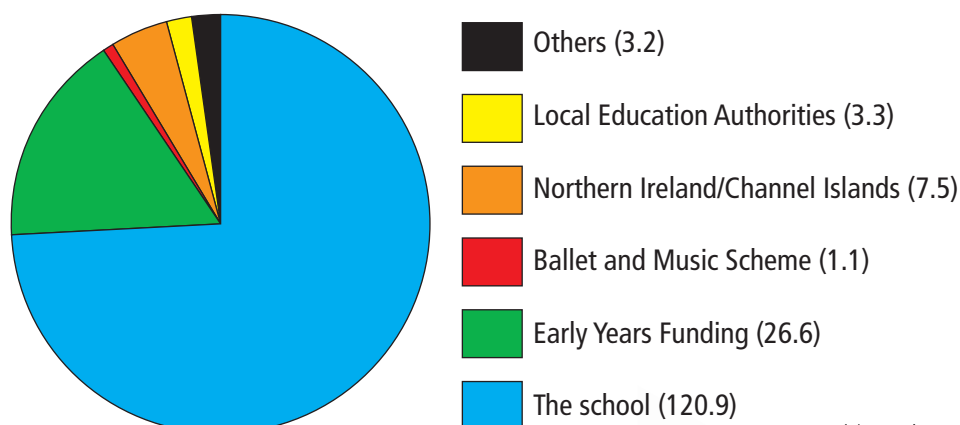
The monetary value of assistance with fees from schools came to a total of £286,249,107. This is an increase of £10 million from 2004 when the same question was asked in a survey of charitable giving.

Fig 9 • Sources of help with fees

	Number	% change since 2005	% of all pupils
The school	120,941	+2.7%	24.1%
Early Years Funding	26,620	+1.1%	5.3%
Ballet and Music Scheme	1,096	-1%	0.2%
Northern Ireland/Channel Islands	7,474	+2.9%	1.5%
Local Education Authorities	3,276	-8.2%	0.7%
Others	3,183	-18.3%	0.6%
TOTAL	162,590	+1.6%	32.4%

Refer to Table 7 in 'Census in Detail'

Fig 10 • Sources of help with fees



(#) Number of pupils in thousands

Overseas Pupils

Each year, the ISC census records the number of **new** pupils joining schools from overseas. This year's figures are in Table 9. They do not show the total number of overseas students.

This year has seen a rise of 870 pupils (11%) in the number of new overseas students, more than recovering from last year's 8% fall. There have been increases across the board but they have been particularly strong from other EU countries. Germany, France and Spain have all seen increases of between 25% and 30%. This is probably due to the increasing number of ISC schools offering the International Baccalaureate which makes a British school a more attractive proposition for children from Western European countries. There have also been strong increases from Russia and the remainder of Europe (largely Eastern European countries). Hong Kong and China, which have traditionally provided a large number of students to the UK continue to do so. The number of students from Hong Kong has increased by 10%.

Table 9A shows that the value to the UK economy of the fees of 20,186 overseas pupils is over £322 million. The considerable increase in this figure from last year is partly due to the increase in new overseas students but also because of better reporting this year.

Fig 11 • New pupils arriving during 2005 from Overseas/Armed forces

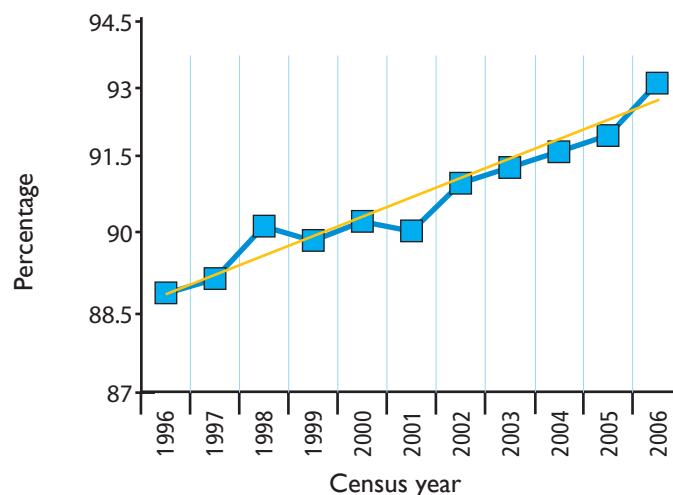
	British	Number	% of Br/Foreign	% change since 2005
Expatriate		1,321	13.6%	28.3%
Armed Forces		1,260	n/a	-18.9%
	Foreign pupils	Number	% of Foreign	% change since 2005
France		201	2.4%	24.1%
Germany		1097	13.1%	24.9%
Russia		343	3.5%	38.3%
Spain		458	5.5%	30.9%
Remainder of Europe (excl UK)		617	617	7.4% 18.9%
Africa		379	4.5%	3.3%
North America		362	4.3%	1.4%
C/S America & Caribbean		199	2.4%	-1.5%
Middle East		190	2.3%	32.9%
Hong Kong		2,186	26.1%	7.8%
Mainland China		1,005	12%	-1.4%
Taiwan		106	1.3%	-1.9%
Japan		261	3.1%	-10.3%
South Korea		309	3.7%	2%
Malaysia		148	1.8%	5.7%
Thailand		135	1.6%	19.5%
S.Asian subcontinent		107	1.3%	69.8%
Remainder of Far East		196	2.3%	0.5%
Australasia		85	1%	0
Total Foreign pupils		8,384	100%	10.7%
Total Foreign/Expatriate		9,705		12.8%

Refer to Table 9 in 'Census in Detail'

Entrance to Higher Education

Independently educated students continue to enter higher education in record numbers. A total of 93.1% of sixth form leavers went on to higher education (see Table 10). In general, girls' schools recorded the highest proportion of leavers (95.4%) going on to higher education.

Fig 12 • Post A-level leavers going to higher education



School Trends

Table 11 records sizes of schools. Each figure under the association headings represents the number of schools whose total pupil rolls are within the stated range. Table 12 shows percentages of boarders: there are 757 schools with only day pupils; at the other end of the scale, there are 32 schools with 90 per cent or more boarders. Table 13, gives boy/girl ratios. There are 134 all-boy schools and 198 all-girl schools (eight fewer single-sex schools than a year earlier); the others are co-educational in varying proportions.

Figs. 17 and 18 show how these characteristics have changed over the past ten years. The number of day-only schools has grown significantly and there has been a steady diminution in the number of schools where boarders are in the majority. The number of the most common type of 'mixed economy' school, however, (with up to a quarter of their roll as boarders) has scarcely altered.

The last decade has seen a very significant decrease in the number of boys-only schools and in those with a large majority of boys. The number of girls schools has also decreased, though less dramatically. The commensurate growth has been in the number of co-educational schools with a slight majority of boys.

Fig 13 • Boarding/day ratios

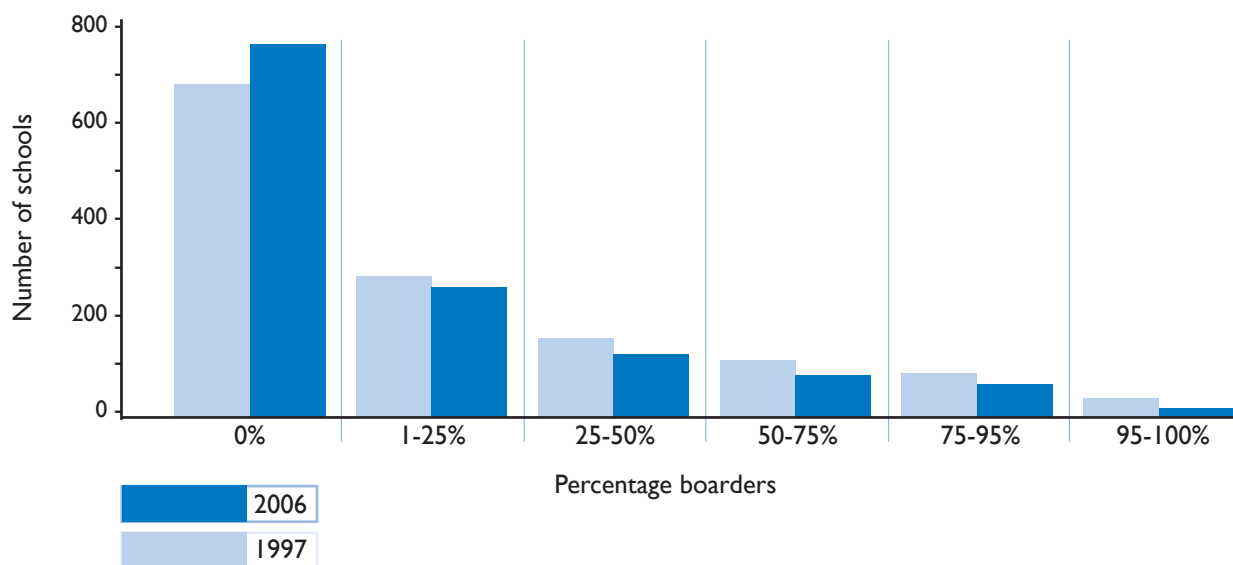
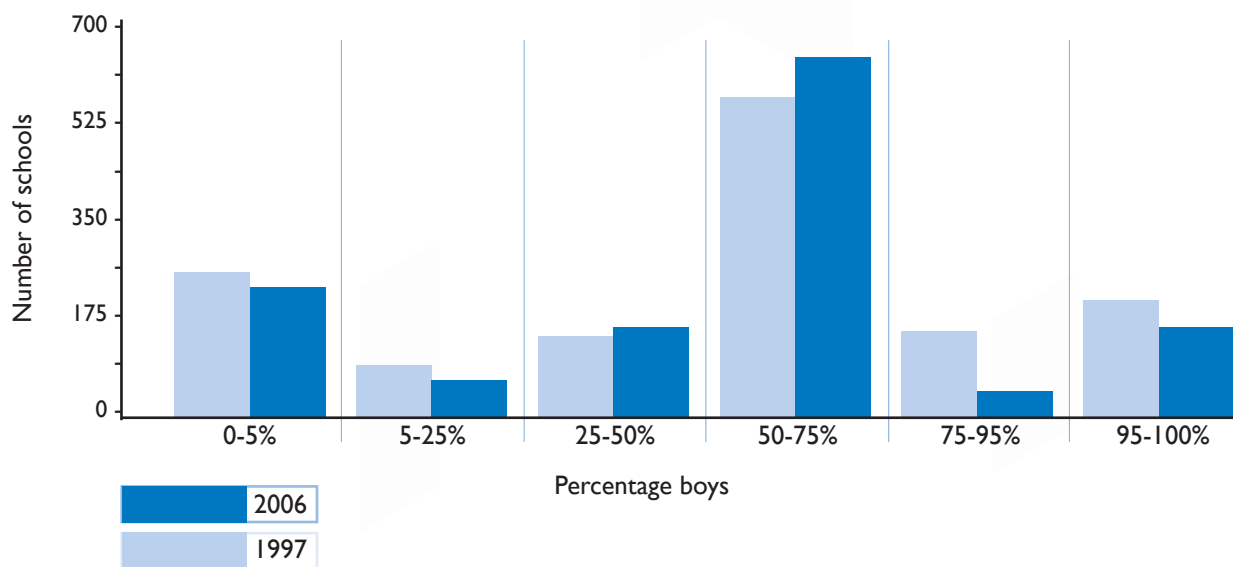


Fig 14 • Boy/girl ratios



Census in Detail

TABLE 1
TOTAL NUMBERS OF SCHOOLS, BOARDING AND DAY PUPILS IN CENSUS

This table shows the numbers of pupils in all 1,270 schools which took part in the 2006 census. 1,275 schools were included in the 2005 census, so totals in this table should not be compared with those for 2005.

		HMC	SHMS	GSA	IAPS	ISA	Total	
Number of schools		245	67	200	500	257	1,270	
Charities		238	65	199	418	133	1,054	
Others		7	2	1	82	124	216	
PUPILS	BOARDERS	Boys	26,971	3,561	1	7,165	1,918	39,802
		Girls	11,011	2,266	10,618	3,111	1,422	28,607
	DAY	Boys	103,236	13,015	2,184	70,931	28,957	218,512
		Girls	41,822	8,775	92,263	49,226	26,292	218,529
	TOTAL	Boys	130,207	16,576	2,185	78,096	30,875	258,314
		Girls	52,833	11,041	102,881	52,337	27,714	247,136
GRAND TOTAL		183,040	27,617	105,066	130,433	58,589	505,450	

TABLE 2
NUMBER OF SCHOOLS, BOARDING AND DAY PUPILS

Results from schools in the current year are compared with the same schools' results in 2005. That is why the number of schools included in Table 1 differs from the number in this and subsequent comparative tables.

Figures for 2006 are printed in blue rows, those for 2005 are printed below them.

			HMC	SHMS	GSA	IAPS	ISA	Total	
Number of schools compared			245	67	200	493	250	1,255	
PUPILS	BOARDERS	Boys	26,971	3,561	1	7,165	1,918	39,616	
			27,067	3,538		7,208	2,013	39,826	-0.5%
	Girls	11,011	2,266	10,618	3,111	1,422	28,428		
		10,609	2,306	10,813	3,214	1,455	28,397		
	DAY	Boys	103,236	13,015	2,184	70,299	28,371	217,105	
			103,010	12,530	1,995	70,756	28,446	216,737	+0.2%
	Girls	41,822	8,775	92,263	48,655	25,752	217,267		
		40,747	8,739	92,853	48,779	26,012	217,130	+0.1%	
	TOTAL	Boys	130,207	16,576	2,185	77,464	30,289	256,721	
			130,077	16,068	1,995	77,964	30,459	256,563	+0.1%
	Girls	52,833	11,041	102,881	51,766	27,174	245,695		
		51,356	11,045	103,666	51,993	27,467	245,527	+0.1%	
GRAND TOTAL			183,040	27,617	105,066	129,230	57,463	502,416	
			181,433	27,113	105,661	129,957	57,926	502,090	+0.1%
			+0.9%	+1.9%	-0.6%	-0.6%	-0.8%	+0.1%	

TABLE 2B
NUMBER OF SCHOOLS, BOARDING AND DAY PUPILS

These columns represent the full membership of each heads' association. Schools can be members of more than one associations. The numbers do not add up to the total ISC membership.

Figures for 2006 are printed in blue rows, those for 2005 are printed below them.

			HMC	SHMIS	GSA	IAPS	ISA
Number of schools compared			245	94	202	541	282
PUPILS	BOARDERS	Boys	26,971	5,188	40	9,520	2,191
			27,067	5,186	28	9,629	2,319
		Girls	11,011	3,364	10,688	4,392	1,747
			10,609	3,376	10,882	4,510	1,774
	DAY	Boys	103,236	20,966	3,095	91,250	34,315
			103,010	20,299	2,920	91,559	34,293
		Girls	41,822	13,931	93,187	62,078	31,357
			40,747	13,698	93,805	61,479	31,678
	TOTAL	Boys	130,207	26,154	3,135	100,770	36,506
			130,077	25,485	2,948	101,188	36,612
		Girls	52,833	17,295	103,875	66,470	33,104
			51,356	17,074	104,687	65,989	33,452
GRAND TOTAL			183,040	43,449	107,010	167,240	69,610
			181,433	42,559	107,635	167,177	70,064
			+0.9%	+2.1%	-0.6%	+0.0%	-0.6%

TABLE 3
NUMBER OF PUPILS IN JANUARY 2006 AND CHANGES SINCE 2005

Figures for 2006 are printed in blue rows, those for 2005 are printed below them.

Age 31st Aug 2005	Boys		Girls		Total
	Boarding	Day	Boarding	Day	
< = 2	0	3,652	0	3,920	7,572
	0	3,385	0	3,717	7,102
3		+7.9%		+5.5%	+6.6%
	0	6,704	0	7,308	14,012
4	0	6,774	2	7,265	14,041
		-1.0%	-100.0%	+0.6%	-0.2%
5	0	9,560	0	9,839	19,399
	1	9,735	0	10,348	20,084
6		-100.0%		-4.9%	-3.4%
	0	10,370	2	10,753	21,125
7	0	10,758	10	11,119	21,887
		-3.6%	-80.0%	-3.3%	-3.5%
8	7	11,218	11	11,475	22,711
	8	11,178	17	11,680	22,883
9		-12.5%		-35.3%	-0.8%
	137	12,780	118	12,904	25,939
10	115	13,010	121	12,836	26,082
		+19.1%		-2.5%	-0.5%
11	606	13,764	303	13,549	28,222
	597	13,410	292	13,189	27,488
12		+1.5%		+2.7%	+2.7%
	939	14,074	529	13,954	29,496
13	985	14,332	498	14,000	29,815
		-4.7%		+6.2%	-1.1%
14	1,437	14,969	800	14,670	31,876
	1,597	15,277	894	14,998	32,766
15		-10.0%		-2.2%	-2.7%
	2,724	18,913	1,954	18,534	42,125
16	2,561	18,497	1,986	18,054	41,098
		+6.4%		-1.6%	+2.5%
17	3,239	18,830	2,376	18,327	42,772
	3,388	19,242	2,544	18,873	44,047
18		-4.4%		-2.9%	-2.9%
	4,874	18,514	3,265	18,685	45,338
19	4,987	18,732	3,244	18,768	45,731
		-2.3%		+0.6%	-0.9%
20	5,435	18,659	3,621	18,881	46,596
	5,476	18,223	3,674	18,662	46,035
21		-0.7%		-1.4%	+1.2%
	5,763	17,922	3,960	18,423	46,068
22	5,900	17,332	4,135	17,569	44,936
		-2.3%		-4.2%	+2.5%
23	6,428	13,771	5,240	13,136	38,575
	6,341	13,716	5,018	13,281	38,356
24		+1.4%		+4.4%	+0.6%
	6,350	12,471	4,953	12,216	35,990
25	6,236	12,190	4,719	12,014	35,159
		+1.8%		+5.0%	+2.4%
26	1,449	875	1,140	614	4,078
	1,411	860	1,058	656	3,985
27		+2.7%		+7.8%	+2.3%
	228	59	156	79	522
28	223	86	185	101	595
		+2.2%		-15.7%	-12.3%
TOTAL	39,616	217,105	28,428	217,267	502,416
	39,826	216,737	28,397	217,130	502,090
		-0.5%		+0.1%	+0.1%
		+0.2%		+0.1%	

TABLE 4
NUMBERS AND FEES BY AREA

Analysis of pupil numbers and average termly fees. (Percentage changes are based on 2005 figures)

	No. of schools	Boys		Girls		Total		Boarding fee	Day fee Boarding schools	Day fee Day schools	Day fee Average	Average fee
		Boarding	Day	Boarding	Day	Boarding	Day					
Scotland	35	1,291	10,866	833	10,965	2,124	21,831	£6,507	£2,946	£2,496	£2,636	£2,978
		-2.0%	+2.3%	-0.1%	+1.4%	-1.3%	+1.8%	+5.6%	5.6%	+3.7%	+4.4%	+4.6%
The North	173	3,264	36,954	2,532	36,789	5,796	73,743	£6,189	£3,124	£2,359	£2,493	£2,759
		-2.8%	+0.7%	-1.3%	-0.3%	-2.2%	+0.2%	+5.6%	5.7%	+5.6%	+5.6%	+5.6%
Wales	17	694	2,827	447	3,222	1,141	6,049	£5,768	£3,113	£2,397	£2,758	£3,223
		-5.1%	+0.5%	+6.2%	-1.0%	-1.0%	-0.3%	+6.4%	5.5%	+6.5%	+6.0%	+6.1%
W Midlands	122	3,835	18,598	3,369	18,429	7,204	37,027	£7,082	£3,686	£2,534	£2,852	£3,523
		+4.0%	+0.2%	-0.7%	-0.4%	+1.8%	-0.1%	+5.6%	5.1%	+4.1%	+4.5%	+4.8%
E Midlands	77	3,057	13,338	1,918	13,736	4,975	27,074	£6,319	£3,320	£2,484	£2,793	£3,292
		+8.0%	-1.2%	+15.4%	-2.5%	+10.7%	-1.8%	+5.2%	6.1%	+5.7%	+5.9%	+5.7%
East Anglia	97	2,360	13,568	1,671	14,445	4,031	28,013	£6,128	£3,561	£2,495	£2,961	£3,353
		-1.3%	-1.8%	-4.6%	-1.0%	-2.7%	-1.4%	+3.4%	5.5%	+6.6%	+6.0%	+5.4%
South & West	176	8,352	25,563	6,191	26,118	14,543	51,681	£6,617	£3,363	£2,553	£2,975	£3,770
		-1.3%	-0.4%	+0.1%	+0.2%	-0.7%	-0.1%	+5.6%	5.8%	+6.6%	+6.1%	+5.9%
Greater London	197	1,506	37,971	369	39,696	1,875	77,667	£7,291	£3,884	£3,284	£3,340	£3,433
		-0.6%	+0.1%	-1.3%	+0.3%	-0.7%	+0.2%	+6.1%	5.3%	+6.2%	+6.1%	+6.1%
South East	350	14,505	50,920	10,906	51,603	25,411	102,523	£6,824	£3,964	£2,971	£3,405	£4,079
		-1.9%	+0.7%	-1.0%	+1.0%	-1.5%	+0.9%	+5.9%	5.8%	+6.7%	+6.2%	+6.1%
Ireland	9	189	6,467	88	2,237	277	8,704	£3,625	£825	£325	£556	£654
		+7.4%	-0.7%	-2.2%	+0.7%	+4.1%	-0.3%	+8.2%	5.9%	-32.1%	-10.0%	-7.2%
All	1253	39,053	217,072	28,324	217,240	67,377	434,312	£6,646	£3,504	£2,722	£2,970	£3,456
		+0.5%	+0.2%	+0.1%	+0.1%	-0.3%	+0.1%	+5.6%	5.7%	+5.8%	+5.8%	+5.7%

TABLE 5
EARNINGS INCREASES, TEACHERS' AWARDS, AVERAGE TERMLY FEES (JANUARY TERM 2006)

Year	Earnings	Teachers' Pay	HMC		SHMIS		GSA		IAPS		ISA		ALL	
			Boarding	Day	Boarding	Day	Boarding	Day	Boarding	Day	Boarding	Day	Boarding	Day
2002			£5,461	£2,327	£4,318	£2,302	£4,245	£2,211	£4,008	£2,267	£4,912	£1,950	£5,120	£2,235
	3.3%	3.5%	+7.2%	+6.6%	+8.0%	+7.8%	+7.1%	+7.5%	+5.9%	+7.2%	+8.0%	+6.4%	+7.1%	+7.0%
2003			£5,853	£2,483	£4,703	£2,519	£5,619	£2,375	£4,241	£2,440	£5,245	£2,068	£5,492	£2,396
	3.8%	2.9%	+9.0%	+9.7%	+10.4%	+8.8%	+9.3%	+10.5%	+8.9%	+9.4%	+8.7%	+9.8%	+9.1%	+9.7%
2004			£6,298	£2,747	£5,229	£2,705	£6,048	£2,631	£4,594	£2,669	£5,658	£2,267	£5,909	£2,637
	4.2%	2.5%	+5.7%	+5.6%	+5.5%	+6.5%	+7.1%	+6.0%	+5.4%	+5.8%	+6.0%	+5.7%	+5.9%	+5.8%
2005			£6,678	£2,913	£5,487	£2,860	£6,496	£2,791	£4,807	£2,821	£6,559	£2,414	£6,276	£2,796
	3.8%	2.95%	+5.4%	+5.2%	+6.6%	+5.9%	+5.7%	+6.4%	+5.6%	+5.1%	+6.1%	+5.6%	+5.6%	+5.8%
2006			£7,061	£3,088	£5,829	£3,048	£6,882	£2,977	£5,090	£2,993	£7,053	£2,563	£6,653	£2,980

Notes

- Earnings figures are the increases in average earnings without bonuses January to January (Office for National Statistics). The 2005 earnings figure of 3.8% is provisional.
- The teachers' pay figure is the national award paid in April 2005. Incremental rises, performance-related pay increases, enhanced salaries for newly-qualified teachers and increased employers' national insurance and teachers' pension contributions resulted in an overall increase in many schools' pay bills of 7% or more.
- A table showing the range of maximum termly fees is printed on page 17.
- Average fees are 'average fee per pupil', rather than 'average fee per school'.

TABLE 6
RANGE OF FEES

Numbers of schools whose maximum termly fees are within £75 of the figures shown

	HMC		SHMIS		GSA		IAPS		ISA	
	Boarding	Day	Boarding	Day	Boarding	Day	Boarding	Day	Boarding	Day
£600		1								
£750										
£900		2								1
£1,050										
£1,200		1					1			1
£1,350										6
£1,500			1		1		4			19
£1,650							1	5		23
£1,800				1				14		18
£1,950	1						1	16		24
£2,100				1	1			20		33
£2,250		11	1	2	6			29		17
£2,400		13		3	23			29		22
£2,550		16		4	18			36		20
£2,700		16		5	19			46		10
£2,850	2	15		6	12			32	1	9
£3,000		12		8	26			39		11
£3,150		6	1	3	12		2	41		6
£3,300		9		6	15			31		6
£3,450		9		4	9		3	28		4
£3,600		16		2	8		1	35	1	1
£3,750		8		2	11		2	30	2	1
£3,900		7		3	8		9	23		1
£4,050	1	12		1	5		9	10	1	1
£4,200	1	7	2	1	4		12	8		2
£4,350		5		2	3		12	5	1	
£4,500		10		1	1	1	8	3	2	1
£4,650		6		2	2	3	11	2	3	1
£4,800	1	7	1	1	3	3	22	5	3	3
£4,950	2	8			3	2	35	1	1	2
£5,100	1	9	1	2	1		15		3	1
£5,250	6	8	1		3	1	14		4	2
£5,400	3	1	4		3	1	17		2	3
£5,550	7	2	5	1	4	4	6		3	2
£5,700	4	4	1		4		6		2	
£5,850	6	3	3		7		3			2
£6,000	4	5	6		5	1	1		3	
£6,150	8	2	1	1	5		2		1	
£6,300	7	1	3		6		1			
£6,450	4		2		4		2		1	
£6,600	12	1	2		6				1	
£6,750	6		2	1						1
£6,900	17		3		3				1	
£7,050	13		1		4		1		1	
£7,200	7		1		4				1	
£7,350	4				2					1
£7,500	10	1	1						2	
£7,650	7		1		6					
£7,800	8				1				1	
£7,950	5								2	
£8,100	1				2					

Notes

This table shows the spread of fees for almost all schools that completed the Census. It omits a few schools which, because of exceptional circumstances (e.g. they are specialist schools), have untypically high or low fees.

TABLE 7
NUMBER OF PUPILS RECEIVING CONTRIBUTIONS TO FEES

Figures for 2006 are printed in blue rows, those for 2005 are printed below them.

	HMC	SHMIS	GSA	IAPS	ISA	Total		
From Local Education Authorities	1,442	796	234	154	650	3,276	-8.2%	0.7%
	1,515	826	250	342	637	3,570		0.7%
Northern Ireland and Channel Islands	7,040	0	152	282	0	7,474	+2.9%	1.5%
	6,825	0	152	289	0	7,266		1.4%
From the school	52,298	8,857	23,502	24,432	11,852	120,941	+2.7%	24.1%
	49,675	8,620	23,150	24,140	12,221	117,806		23.5%
From Government Ballet and Music Scheme	394	570	21	16	95	1,096	-1.0%	0.2%
	541	389	94	5	78	1,107		0.2%
Early Years Funding	2,043	723	3,315	14,405	6,134	26,620	+1.1%	5.3%
	2,040	770	3,429	14,055	6,040	26,334		5.2%
From all other known sources	1,662	176	597	478	270	3,183	-18.3%	0.6%
	1,896	340	535	643	482	3,896		0.8%
TOTALS	64,879	11,122	27,821	39,767	19,001	162,590	+1.6%	32.4%
	62,492	10,945	27,610	39,474	19,458	159,979		31.9%
Percentage change since 2005	+3.8%	+1.6%	+0.8%	+0.7%	-2.3%	+1.6%		
Number of pupils helped as % of all pupils	35.4%	40.3%	26.5%	30.8%	33.1%	32.4%		
	34.4%	40.4%	26.1%	30.4%	33.6%	31.9%		

Notes

Contributions from Local Education Authorities include help given for special educational needs.

Help given by the Government to pupils in Northern Ireland is separate from Contributions from Local Education Authorities.

This table does not include pupils helped through HM Forces and Diplomatic allowances.

This table does not include help given to children of staff.

TABLE 8
NEW BUILDINGS AND EQUIPMENT, 2005

Figures for 2005 are printed in blue rows, those for 2004 are printed below them.

	HMC	SHMIS	GSA	IAPS	ISA	Total
Amount spent on new/reburbished boarding accommodation						
Total (in millions of pounds)	57.1	5.4	12.9	4.8	6.0	86.2
	63.6	7.9	7.4	4.6	2.7	86.4
Per boarder (in pounds)	1,504	932	1211	463	1807	1,267
	1,689	1359	688	444	785	1,266
Amount spent on new buildings						
Total (in millions of pounds)	147.6	21.3	62.9	51.6	22.1	305.6
	125.7	24.4	68.4	63.9	17.8	300.2
Per pupil (in pounds)	806	771	599	399	384	608
	693	900	646	491	307	597
Amount spent on improvements to buildings and equipment						
Total (in millions of pounds)	81.7	5.9	32.9	29.0	9.9	159.4
	76.8	10.6	30.1	30.9	10.7	159.1
Per pupil (in pounds)	446	213	313	224	171	317
	423	391	284	237	184	316
TOTAL						
Total (in millions of pounds)	286.5	32.6	108.7	85.4	38.0	551.2
	266.2	43.0	105.9	99.4	31.2	545.7
Per pupil (in pounds)	1,564	1,181	1,034	661	661	1,097
	1,467	1,584	1,002	764	538	1,086

TABLE 9
NEW PUPILS WHOSE PARENTS LIVE OVERSEAS AND/OR ARE IN THE ARMED FORCES

Figures for 2006 are printed in blue rows, those for 2005 are printed below them.

These are numbers for pupils who have entered the school between January 2005 and January 2006.

	HMC	SHMS	GSA	IAPS	ISA	Total
British Pupils whose parents:						
Live abroad (excl. Armed Forces)	656	88	260	234	83	1,321
	594	90	113	161	81	1,039
Serve in Armed Forces	360	199	126	472	103	1,260
	509	254	119	442	223	1,547
Foreign Pupils whose permanent homes are in:						
France	67	32	33	46	23	201
	45	19	25	50	22	161
Germany	771	118	99	18	91	1,097
	635	106	54	8	65	868
Russia	158	32	33	49	71	343
	118	28	24	27	48	245
Spain	103	23	120	192	20	458
	81	20	101	137	12	351
Remainder of Europe (excl. UK)	274	85	78	42	138	617
	245	67	39	58	90	499
Africa	166	39	93	42	39	379
	164	33	95	31	48	371
North America	84	19	41	60	158	362
	102	13	49	72	126	362
C and S America & Caribbean	50	26	65	33	25	199
	66	15	69	31	17	198
Middle East	86	21	21	17	45	190
	57	18	25	12	30	142
Hong Kong	899	320	574	161	232	2,186
	779	327	525	147	213	1,991
Mainland China	449	153	192	12	199	1,005
	466	157	203	7	203	1,036
Taiwan	49	16	11	7	23	106
	46	23	13	4	23	109
Japan	69	52	60	21	59	261
	70	62	59	29	62	282
South Korea	95	43	59	53	59	309
	75	41	55	84	52	307
Malaysia	49	67	16	7	9	148
	58	52	19	3	6	138
Thailand	60	6	36	14	19	135
	44	7	18	23	19	111
India/Pakistan/Sri Lanka	56	9	13	12	17	107
	26	4	10	9	13	62
Remainder of Far East	87	36	41	8	24	196
	73	43	25	17	39	197
Australasia	18	7	9	16	35	85
	23	14	12	19	16	84
New Pupils from Overseas	3,590	1,104	1,594	810	1,286	8,384
	3,173	1,049	1,420	768	1,104	7,514
New British and Foreign Pupils whose parents live overseas (excl. Armed Forces)	4,246	1,192	1,854	1,044	1,369	9,705
	3,767	1,139	1,533	929	1,185	8,553

TABLE 9a
FEES PAID FROM OVERSEAS SOURCES

Figures for 2006 are printed in blue rows, those for 2005 are printed below them.

	Pupils	Fees / Year
Day pupils	1,565	22,881,300
	942	9,907,200
Full boarding pupils	18,621	299,277,300
	15,314	259,421,100
Total	20,186	322,158,600
	16,256	269,328,300

Note for table 9a

Schools submitted the number of pupils and total termly fee for the January Term. These fees have been multiplied by three to obtain annual figures.

The following pupils have been included: foreign nationals who live overseas; UK citizens who have worked continuously in an overseas country for one year or more.

The following pupils are excluded: pupils whose fees are paid by UK military personnel who are employed abroad; UK civil servants (including diplomats) who are employed abroad in British embassies; overseas nationals who have been resident in the UK for one year or more; overseas civil servants (including diplomats) who work in embassies or high commissions in the UK.

TABLE 10
POST A-LEVEL LEAVERS

	HMC	SHMIS	GSA	ISA	Total
Total number recorded:	23,639	2,312	8,827	1,828	36,607
to Higher Education (Incl. Univ.)	93.3	86.9	95.4	86.3	93.1
% to University	89.8	81.3	92.0	81.7	89.4
% to re-take A-level in Indep Sector	0.8	0.5	0.5	1.8	0.8
% to retake A-level in Maintained Sector	0.3	0.2	0.1	0.5	0.3
% to Further Education or Training	1.5	4.5	1.1	4.4	1.7
Others	4.1	7.9	2.9	7.0	4.2

Note

GSA and ISA include a significant number of schools which do not have sixth forms; pre A-level leavers do not appear in this table.

TABLE 11
SIZES OF SCHOOLS

School Size: (Pupils)	Number of schools					Total
	HMC	SHMIS	GSA	IAPS	ISA	
5 - 50				2	3	5
51 - 100		1	1	19	28	49
101 - 150			3	67	64	134
151 - 200		3	4	91	53	151
201 - 250		4	12	76	30	122
251 - 300	4	11	14	84	19	132
301 - 350	8	9	22	59	17	115
351 - 400	11	7	21	47	12	98
401 - 450	19	9	18	22	10	78
451 - 500	18	6	13	15	7	59
501 - 550	11	4	16	10	6	47
551 - 600	15	4	12	2		33
601 - 650	16	5	6	3	3	33
651 - 700	20	1	10			31
701 - 750	24		8		2	34
751 - 800	10		7	1	2	20
801 - 850	12	2	4	1		19
851 - 900	18		8	1		27
901 - 950	6	1	8			15
951 - 1000	7		5			12
1001 - 1050	9		1			10
1051 - 1100	9		3			12
1101 - 1150	7		3			10
1151 - 1200	3					3
1201 - 1250	3					3
1251 - 1300	2					2
1301 - 1350	1		1		1	3
1351 - 1400	3					3
1401 - 1450	3					3
1501 - 1550	1					1
1551 - 1600	1					1
1651 - 1700	1					1
1851 - 1900	1					1
2251 - 2300	1					1
2301 - 2350	1					1

TABLE 12
BOARDING / DAY RATIOS

	Number of schools					
	HMC	SHMS	GSA	IAPS	ISA	Total
% BOARDERS						
0	98	20	120	309	210	757
1-5	8		6	28	5	47
5-10	14	4	11	29	4	62
10-15	10	7	12	28	5	62
15-20	11	7	3	25	5	51
20-25	10	3	6	21	3	43
25-30	10	4	8	11	3	36
30-35	5	5	2	10	3	25
35-40	4	2	5	5	1	17
40-45	7	2	5	4	4	22
45-50	5	1	4	1	1	12
50-55	7		1	7	2	18
55-60	8	2		3	3	16
60-65	5		2	4	1	12
65-70	8				1	9
70-75	9	2	2	1	1	15
75-80	6	2	3			11
80-85	4	1	2	4		11
85-90	5	2	1	3	1	12
90-95	1	1	2	1	1	6
95-99	4		3	2	1	10
100	6	2	2	4	2	16

TABLE 13
BOY / GIRL RATIOS

	Number of schools					
	HMC	SHMS	GSA	IAPS	ISA	Total
% BOYS						
0			149	35	14	198
1-5			27	12	2	41
5-10			10	5	2	17
10-15			6	4		10
15-20		1	2	3	4	10
20-25			3	7	6	16
25-30		2	2	2	2	8
30-35			1	3	1	5
35-40		2		6	9	17
40-45		1		11	13	25
45-50	6	7		34	38	85
50-55	45	7		60	47	160
55-60	38	19		106	51	214
60-65	47	8		61	28	144
65-70	18	5		39	10	72
70-75	12	7		15	6	40
75-80	1	2		3	1	7
80-85	10			7	4	21
85-90	7	2		3	2	14
90-95	8			5	2	15
95-99	6	2		7	2	17
100	47	2		72	13	134

TABLE 14
STAFF AND PUPILS: NUMBERS AND RATIOS

Figures for 2006 are printed in blue rows, those for 2005 are printed below them.

	HMC	SHMIS	GSA	IAPS	ISA	Total
Full time:						
Men	11,083	1,327	1,641	3,811	1,448	19,310
	11,068	1,295	1,578	3,820	1,418	19,179
Women	6,242	1,349	7,323	7,236	3,158	25,308
	5,953	1,298	7,360	7,127	3,187	24,925
Total	17,325	2,676	8,964	11,047	4,606	44,618
	17,021	2,593	8,938	10,947	4,605	44,104
Part time - Number of staff:						
Men	867	193	478	588	526	2,652
	849	183	436	542	536	2,546
Women	2,265	647	3,366	3,131	2,151	11,560
	2,257	606	3,353	3,223	2,103	11,542
Total	3,132	840	3,844	3,719	2,677	14,212
	3,106	789	3,789	3,765	2,639	14,088
Part time - Hours:						
Men	10,909	2,563	6,466	6,901	6,856	33,695
	10,494	2,357	5,765	7,200	6,586	32,402
Women	31,178	9,454	48,289	50,095	31,290	170,306
	28,950	8,436	48,935	51,381	30,768	168,470
Total	42,087	12,017	54,755	56,996	38,146	204,001
	39,444	10,793	54,700	58,581	37,354	200,872
Full time equivalent (32.5 PT hours = 1 FT):						
Men	11,418	1,405	1,839	4,023	1,658	20,346
	11,390	1,367	1,755	4,041	1,620	20,175
Women	7,201	1,639	8,808	8,777	4,120	30,548
	6,843	1,557	8,865	8,707	4,133	30,108
Total	18,619	3,045	10,648	12,800	5,779	50,894
	18,234	2,925	10,621	12,749	5,754	50,284
Pupils:						
Boys	130,207	16,576	2,185	77,464	30,289	256,721
	130,077	16,068	1,995	77,964	30,459	256,563
Girls	52,833	11,041	102,881	51,766	27,174	245,695
	51,356	11,045	103,666	51,993	27,467	245,527
Total	183,040	27,617	105,066	129,230	57,463	502,416
	181,433	27,113	105,661	129,957	57,926	502,090
Pupils + weighting for Sixth Form:						
Boys	165,007	19,763	2,248	77,464	32,124	296,606
	164,897	19,092	2,002	77,964	32,283	296,238
Girls	67,807	13,160	121,093	51,766	28,851	282,677
	65,783	13,119	121,943	51,993	29,112	281,950
Total	232,814	32,923	123,341	129,230	60,975	579,283
	230,680	32,211	123,945	129,957	61,395	578,188
Ratios - raw:						
Pupil/Teacher	9.83	9.07	9.87	10.10	9.94	9.87
	9.95	9.27	9.95	10.19	10.07	9.99
Boys/Girls	71% / 29%	60% / 40%	2% / 98%	59% / 41%	52% / 48%	51% / 49%
	71% / 29%	59% / 41%	1% / 99%	59% / 41%	52% / 48%	51% / 49%
Men/Women	61% / 39%	46% / 54%	17% / 83%	31% / 69%	28% / 72%	39% / 61%
	62% / 38%	46% / 54%	16% / 84%	31% / 69%	28% / 72%	40% / 60%
Ratios - with Sixth Form weighting:						
Pupil/Teacher	12.50	10.81	11.58	10.10	10.55	11.38
	12.65	11.01	11.67	10.19	10.67	11.50
Boys/Girls	70% / 30%	60% / 40%	1% / 99%	59% / 41%	52% / 48%	51% / 49%
	71% / 29%	59% / 41%	1% / 99%	59% / 41%	52% / 48%	51% / 49%
Men/Women	61% / 39%	46% / 54%	17% / 83%	31% / 69%	28% / 72%	39% / 61%
	62% / 38%	46% / 54%	16% / 84%	31% / 69%	28% / 72%	40% / 60%

TABLE 15
FULL TIME STAFF CHANGES

Figures for 2006 are printed in blue rows, those for 2005 are printed below them.

	HMC	SHMS	GSA	IAPS	ISA	Total
Arriving From:						
Independent Schools	639	124	417	574	217	1,971
	711	96	405	592	185	1,989
Maintained Schools	580	152	493	381	264	1,870
	525	157	448	396	248	1,774
ITT at University or Training College	275	36	128	97	50	586
	272	43	114	88	47	564
New Graduates (degree or other courses)	199	25	106	101	41	472
	197	23	57	115	33	425
Industry, etc.	64	17	23	39	26	169
	70	25	22	47	32	196
Other (Incl. retirement)	247	71	239	245	141	943
	285	70	179	247	158	939
Total	2,004	425	1,406	1,437	739	6,011
	2,060	414	1,225	1,485	703	5,887
Going To:						
Independent Schools	560	79	286	423	145	1,493
	591	74	277	448	137	1,527
Maintained Schools	142	68	177	113	108	608
	165	56	128	108	110	567
ITT at University or Training College						
	1		1	4	1	7
New Graduates (degree or other courses)						
	2			1		3
Industry, etc.	57	23	32	41	35	188
	36	17	22	26	32	133
Other (Incl. retirement)	984	188	768	725	414	3,079
	989	178	682	689	357	2,895
Total	1,743	358	1,263	1,302	702	5,368
	1,784	325	1,110	1,276	637	5,132
Net Gain from:						
Independent Schools	79	45	131	151	72	478
	120	22	128	144	48	462
Maintained Schools	438	84	316	268	156	1,262
	360	101	320	288	138	1,207
ITT at University or Training College	275	36	128	97	50	586
	271	43	113	84	46	557
New Graduates (degree or other courses)	199	25	106	101	41	472
	195	23	57	114	33	422
Industry, etc.	7	-6	-9	-2	-9	-19
	34	8		21		63
Other (Incl. retirement)	-737	-117	-529	-480	-273	-2,136
	-704	-108	-503	-442	-199	-1,956
Total	261	67	143	135	37	643
	276	89	115	209	66	755
Full-time Staff:						
Total	17,325	2,676	8,964	11,047	4,606	44,618
	17,021	2,593	8,938	10,947	4,605	44,104
Turnover as % of Number of Full-time Staff	11.8	16.4	15.7	13.1	16.0	13.6
	12.1	16.0	13.7	13.6	15.3	13.3
Gain as % of Number of Full-time Staff	1.5	2.6	1.6	1.2	0.8	1.5
	1.6	3.4	1.3	1.9	1.4	1.7

Constituent Bodies:

Association of Governing Bodies
of Independent Schools

Girls' Schools Association

Headmasters' and
Headmistresses' Conference

Incorporated Association of
Preparatory Schools

Independent Schools
Association

Independent Schools' Bursars
Association

Society of Headmasters and
Headmistresses of Independent
Schools

Independent Schools Council

St Vincent House, 30 Orange Street, London, WC2H 7HH

☎ 020 7766 7070

✉ office@isc.co.uk

🌐 www.isc.co.uk



INDEPENDENT SCHOOLS COUNCIL

A Company Limited by Guarantee.
Registered in England No. 1103760

Editor: Sam Freedman

Design & layout: Liam Giet

Printed by W P Litho Ltd,
W P Limited
Redman Road
Portemarth
Calne, Wiltshire
England, SN11 9PR