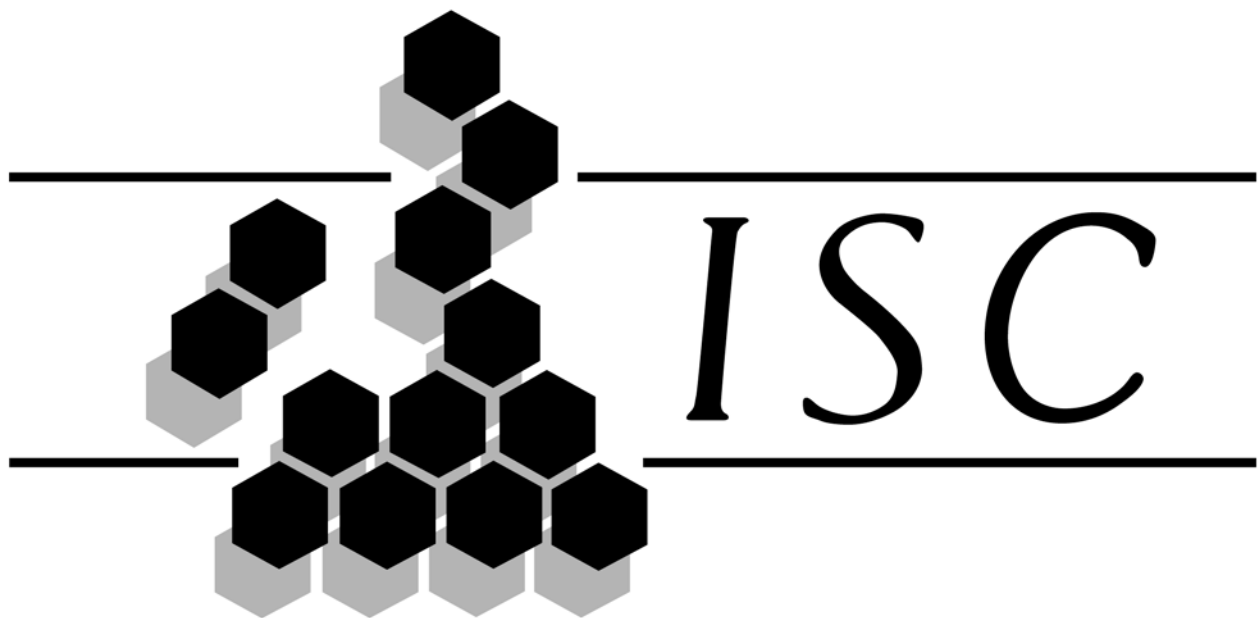


ANNUAL CENSUS 2004



INDEPENDENT SCHOOLS COUNCIL

STATISTICAL SURVEY OF INDEPENDENT SCHOOLS

Independent Schools Council information service

Grosvenor Gardens House

35-37 Grosvenor Gardens London SW1W 0BS

Telephone 020 7798 1500

email info@iscis.uk.net

website www.iscis.uk.net

INDEPENDENT SCHOOLS COUNCIL

Statistical Survey of Independent Schools - January 2004

These tables contain information derived from a survey carried out
in January 2004 among members of :-

- | | | |
|-------|---|--|
| HMC | - | boys' and coeducational schools whose heads are members of the Headmasters' and Headmistresses' Conference and whose governing bodies are members of AGBIS |
| SHMIS | - | schools whose heads are members of the Society of Headmasters and Headmistresses of Independent Schools, most of whose governing bodies are members of AGBIS |
| AGBIS | - | schools whose governing bodies are members of the Association of Governing Bodies of Independent Schools
<i>Note that AGBIS was formed by the amalgamation of the Governing Bodies Association (GBA) and Governing Bodies of Girls' Schools Association (GBGSA) in 2002</i> |
| GSA | - | girls' schools whose heads are members of the Girls' Schools Association and whose governing bodies belong to AGBIS |
| IAPS | - | schools whose heads are members of the Incorporated Association of Preparatory Schools |
| ISA | - | schools whose heads are members of the Independent Schools Association |
| ISBA | - | schools whose bursars are members of the Independent Schools' Bursars Association |

The information relates to January 2004, except that expenditure on
buildings and equipment is for the financial year ending at various dates in 2003.

ISC, Grosvenor Gardens House, 35-37 Grosvenor Gardens, London SW1W 0BS
Telephone 020 7798 1500 Email info@iscis.uk.net

The media and public relations arm of the Independent Schools Council is
ISCis, Independent Schools Council information service

Analysis and typesetting by Monkton Combe Computing Service,
1 Church Cottages, Monkton Combe, Bath BA2 7HB

Printed by Ralph Allen Press Ltd., 22 Milk Street, Bath BA1 1UT
Published April 2004

CONTENTS

Page

Inside front cover **LIST OF ASSOCIATIONS**

1	CONTENTS
2-5	INTRODUCTION TO ISC CENSUS 2004
6-11	SUMMARY TABLES
13	2004 SURVEY IN DETAIL
	TABLE FOR ALL SCHOOLS IN SURVEY
Table 1	Number of schools and pupils
	COMPARATIVE TABLES FOR SCHOOLS IN 2003 AND 2004 SURVEYS
Table 2	Comparative totals for schools in 2003 and 2004 Census
14 Table 3	Number of pupils and comparisons with 2003
15 Table 4	Pupils and fees analysed by areas
Table 5	Average fees
16 Table 6	Fee ranges
17 Table 7	Contributions to fees
Table 8	Expenditure on buildings and equipment
18 Table 9	Children with parents overseas and/or in the armed forces
Table 9A	Fees paid from overseas sources
19 Table 10	Leavers to higher education
Table 11	School sizes
20 Table 12	Boarding/Day ratios
Table 13	Boy/Girl ratios
21 Table 14	Staff and Pupils : numbers and ratios
22 Table 15	Full-time staff changes
23	LIST OF AREAS AND COUNTIES

Inside back cover **ISCis**

Back cover **ISCis PUBLICATIONS**

TABLES FOR INDIVIDUAL ASSOCIATIONS - HMC, SHMIS, GSA, IAPS, ISA
 - are available as *supplements to this booklet*.

ISC CENSUS 2004 : INTRODUCTION

by David Woodhead, National Director ISCis and Deputy General Secretary ISC

Ninth successive increase in pupil numbers – a record run

- ***More pupils in ISC schools***
- ***Ninth increase in succession and 17th in the 22 years of the Census***
- ***Schools help more with fees***
- ***More investment in facilities***

During twenty-two years of the ISC Census in comparable form, there have been only five years in which pupil numbers did not increase. Day numbers dropped in only two of those years. One period of eight years of continuous growth lasted until 1991; 2003/04 is the ninth year of continuous growth – a record run – since 1995/6. While the growth is smaller than in recent years, it must be seen in the context of substantially higher fees attributable to an unusual combination of cost pressures on schools.

The total population in ISC schools on Census Day in January 2004 was 508,027, of whom 437,774 were day boys and girls and 70,253 were boarders [Table 1, page 13]. They attended 1,277 schools belonging to the associations of governors, heads and bursars within the Independent Schools Council.

The main statistics and percentage changes between 2003 and 2004 are summarised in the tables and commentaries between pages 6 and 11. More detailed tables follow between pages 13 and 22. *Results from schools in the current year are compared with the same schools' results in 2003.* That is why the number of schools included in Table 1 differs from the number in the subsequent comparative tables.

Comparisons are made, therefore, between the 1,267

schools which participated in both the 2003 and 2004 surveys. In these schools there are 505,342 pupils in 2004 (the figure printed in bold at the top of Table 2, page 13), compared with 504,926 in 2003 (the figure immediately below), an increase of 416 or 0.1 per cent.

Table 2 distinguishes between day and boarding boys and girls. It shows a rise of 0.3 per cent in day pupils but a drop in boarders of 1.4 per cent, after two years in which boarding numbers increased.

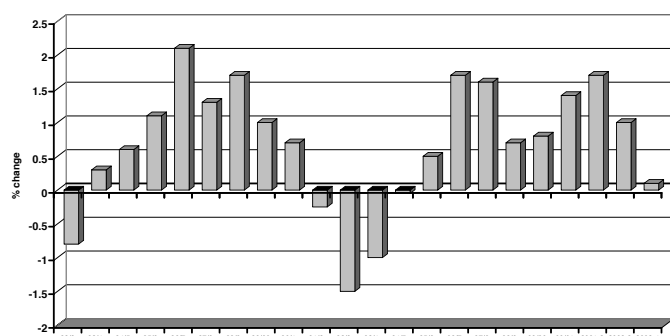
Graph 1 traces changes in total pupil numbers in the twenty-two surveys conducted on a comparable basis. The current nine-year period of continuous growth in numbers, beginning in 1995/96, has seen annual percentage rises of 0.6, 1.7, 1.6, 0.7, 0.8, 1.4, 1.7, 1.0 and 0.1 respectively. Numbers in the early 1990s were affected by recession: between 1992-95 buoyant day pupil recruitment was offset by the decline of boarding. Growth between 1984-91 followed the leaner years of the early 1980s' recession.

More than 80 per cent of the UK's independent sector pupils are in ISC schools. The sector as a whole educates 620,000 children in 2,300 schools – an increase of more than 60,000 over the past twenty years.

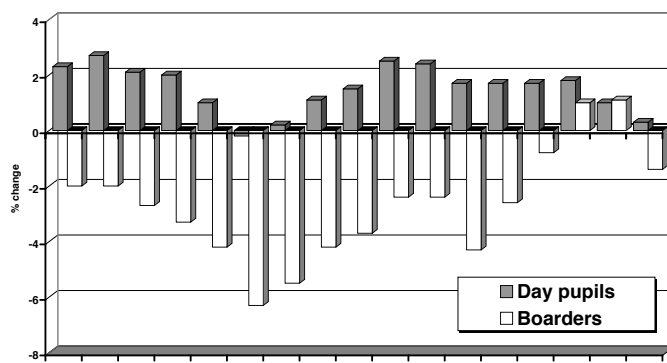
The proportion of pupils educated in the independent sector is rising. Department for Education & Skills (DfES) statistics for England – which has the vast majority of the UK's independently-educated pupils – show the number of under-11s in maintained nursery and primary schools falling since 1999 and secondary numbers dropping after this year. Table 3, page 14 records the ages at which pupil numbers have risen or fallen in ISC schools between 2003 and 2004.

Graph 2 tracks trends in day and boarding numbers in ISC schools from the 1980s to 2004.

1. ANNUAL CHANGE IN NUMBERS SINCE 1982

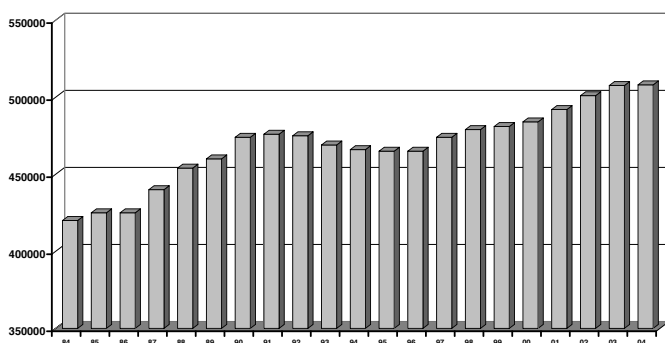


2. TRENDS IN DAY & BOARDING NUMBERS



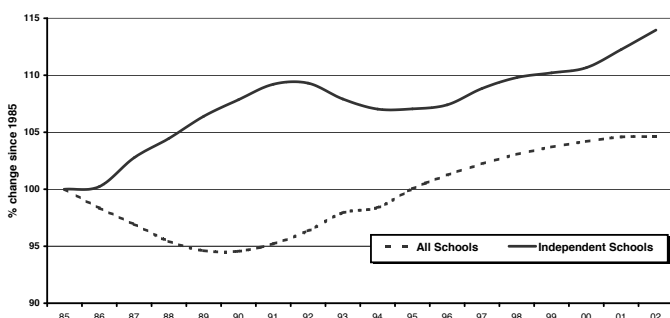
Graph 3 shows the growth in pupil numbers in ISC schools from the mid-1980s until 2004.

3. PUPIL NUMBERS IN ISC SCHOOLS 1984-2004



Graph 4 traces trends in primary and secondary pupil numbers in independent and maintained schools since 1985, based on DfES statistics. The independent sector has managed to buck demographic trends during most of this period and it continues to do so.

4. INDEPENDENT SCHOOLS & DEMOGRAPHIC TRENDS



School costs and fees

Fee increases in 2003-04 averaged 9.6 per cent, compared with 7.0 per cent in the previous year. Average annual rises have accelerated steadily from 4.2 per cent in 1994-95; during the 1980s they averaged about 10 per cent. Cost pressures on schools in 2003-04 have been particularly severe: they explain not only the steep increases which most schools found unavoidable, but also, perhaps, the smaller growth in pupil numbers than for some years.

Average termly fees are recorded in **Tables 4 & 5, page 15**. The former includes a regional breakdown of pupil numbers and average fees for day and boarding pupils. Fees for day pupils in boarding schools are usually higher than for day pupils in all-day schools because staff:pupil ratios are higher in schools with boarders and there is a longer school day and, in many cases, school week.

Table 5 compares percentage increases in average day and boarding fees (under school associations) over a five-year period with increases in average earnings and teachers' pay. It does not give a full picture of teachers' pay,

however, because it records only the national award, not the incremental payments which most teachers receive or the extent to which independent schools (particularly those with boarders) pay more than national pay scales.

The Retail Prices Index is an inadequate guide to costs in schools. Staff and capital costs constitute the biggest elements in school budgets. Independent school fees cover administration, maintenance and capital expenditure as well as tuition and other costs. They have to pay for expensive items not included in state schools' *per capita* figures. This is often overlooked when facile comparisons are made between *per capita* funding in the maintained and independent sectors. The full costs of an independent education are inevitably more visible than those of a school funded by taxes providing education 'free at the point of delivery'.

In the maintained sector, the Government recommendation to local education authorities for 2003-04 was a standard spending assessment increase of 5.2 per cent per pupil, but this excludes capital expenditure and central administration costs. Publicly-funded education has been adversely affected by some of the same cost pressures that have hit independent schools, particularly staff costs and those arising from the increased contribution to teacher pensions (see below). But the latter impinge particularly heavily on independent schools with an average teacher:pupil ratio of 1:11 compared with the maintained sector's 1:18.

Increased staff costs are the chief determinant of annual fee rises. ISC schools pay national awards or their own comparable or more generous scales, plus incremental rises provided for in national agreements and, in many cases, performance-related pay. Salaries of teachers and other staff are the largest items of school expenditure, accounting for around 70 per cent of a school's costs. Historically, teachers' salaries have often outpaced or matched the RPI through national awards alone, before taking incremental rises into account.

The Government pay award to teachers in 2003 increased the basic scale by 2.9 per cent (but up to 10 per cent for heads and deputy heads). The principal increased staff cost for which schools also had to budget in 2003/04 was the steep rise – from 8.35 per cent to 13.5 per cent – in employers' contributions to the Teachers' Pension Scheme. This alone is estimated to have added £75 million to staff costs of schools in ISC. Other increased costs included higher employers' national insurance contributions and greater provision for final salary pension schemes for support staff. These factors resulted in an overall increase in many schools' pay bills of more than 7 per cent. Schools have also been hit by higher costs of other goods and services, such as insurance premiums, and boarding schools in particular have incurred substantial additional costs arising from government legislation.

Parents regard smaller teaching groups, and therefore greater individual attention for pupils, as one of the principal attractions of independent schools. Fees are the price parents pay for generous staffing as well as constantly updated facilities. **Table 6, page 16** shows the number of schools in each association with fees within the stated range. Staff:pupil ratios are recorded in **Table 14, page 21** and show another slight improvement.

More pupils helped by schools

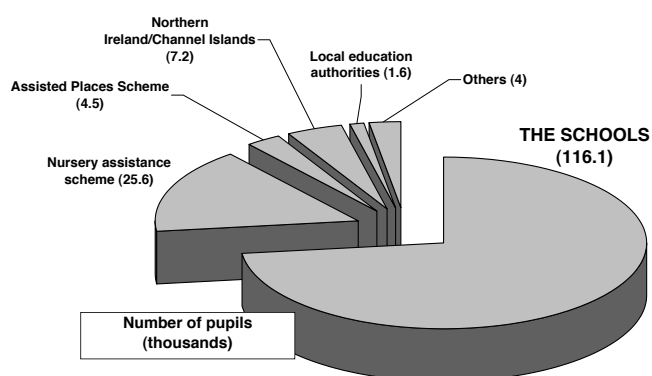
The number of boys and girls who are helped with their fees by their schools has increased by 2.1 per cent – from 113,697 to 116,120 – and they represent 23 per cent of all pupils in ISC schools (compared with 22.5 per cent a year earlier).

The total number receiving help with fees has fallen by 0.8 per cent to 159,166 (31.5 per cent of all pupils), largely because of the drop in the number of pupils who are supported by the government assisted places scheme. This Census covers the sixth year in which there has not been a new intake of pupils under the scheme, the phasing out of which began after the Labour government took office in 1997. The number of assisted place pupils is now 4,543, most of whom will leave their schools this summer (2004).

There are small reductions, too, in the number of boys and girls helped by local education authority funding in all parts of the United Kingdom and Channel Islands, but increased help through the government nursery assistance scheme and from 'other sources', which include educational charitable trusts.

Details are given in **Table 7, page 17** and **Graph 5**.

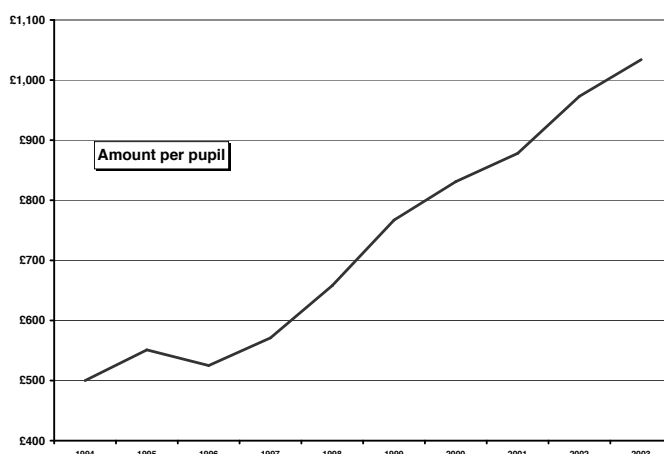
5. SOURCES OF HELP WITH FEES



Investing in schools

Spending in total and per pupil on new and improved buildings and equipment is recorded in **Table 8, page 17** and **Graph 6**. During 2003 schools spent £522.6 million, or £1,034 per pupil (compared with £497.2 million and £984 respectively in 2002). These represented increases of 5.1 and 6.6 per cent respectively. Investment in new and refurbished boarding accommodation (recorded separately for the first time last year) increased by more than 30 per cent to a total of £90.5 million, or £1,301 per boarding pupil.

6. SPENDING ON BUILDINGS AND EQUIPMENT



More pupils from overseas

The number of new pupils from overseas who have joined ISC schools during the year up to January 2004 increased by 3.3 per cent to 9,687. Details are recorded in **Table 9, page 18**. However, as there was almost no change in the number of new *foreign* pupils (8,294 compared with 8,299 in the previous year), the overall increase in pupils from overseas is attributable to a rise among new British expatriate children from 1,078 to 1,393. The number of new children of families serving overseas in the armed forces fell by 6 per cent, from 1,549 to 1,454.

Among foreign pupils, there were notable increases from Germany (up by 11.2 per cent to 1,001) and the People's Republic of China (up 13.1 per cent to 1,102). From continental Europe as a whole there were 2,330 new pupils, compared with 2,239 in the previous year. From the Far East there were 4,445, compared with 4,402. Parts of the world which are traditionally strong for recruitment by British boarding schools maintained this position.

Table 9A, page 18 shows the value to the UK economy of the fees of 18,249 overseas pupils as £314 million. This is important, but even more so are the links which successive generations of British-educated foreigners establish and retain with the UK and the friends they make while at school here; many will also occupy influential positions in their own countries. UK universities gain, too, from the presence of foreign pupils in ISC schools: a recent survey showed that more than 70 per cent of them stayed in Britain for their higher education courses.

More than 92% to higher education

Table 10, page 19 shows that 92.4 per cent of ISC school-leavers go on to higher education after taking A-levels or other sixth-form qualifications (a slight increase on the previous year). It does not record those (relatively few) who leave immediately after GCSE. Statistics for GSA and ISA are affected by the schools in their membership which do not have sixth-forms. The table understates higher education entries because schools do not know the eventual destinations of all leavers who defer university entry.

Size of schools; Boarding/day; Boys/girls

Table 11, page 19 records sizes of schools. Each figure under the association headings represents the number of schools whose total pupil rolls are within the stated range. The average size of an ISC school is 398.

Table 12, page 20 shows percentages of boarders: for example, there are 36 schools across all associations with 90 per cent or more boarders.

Table 13, page 20 gives boy/girl ratios. For example, there are 139 all-boy schools and 203 all-girl schools (four fewer single-sex schools than a year earlier); the others are coeducational in varying proportions.

Staff & pupils

Table 14, page 21 covers staff:pupil numbers and ratios. It records an overall staff:pupil ratio of 1:10.1 and a ratio of 1:11.7 when sixth-form weighting (each sixth-form pupil counted as two) is taken into account. Both represent further slight improvements on previous years.

Table 15, page 22 principally records full-time staff changes during the year – teaching staff taking up appointments in ISC schools from other independent schools, maintained schools, universities and other sources. For example, 3,470 teachers moved between independent schools; but while 1,832 teachers from maintained schools took up posts in ISC schools, only 558 moved from ISC schools into the maintained sector. This ratio – of more than three times as many teachers moving from maintained to independent schools as going in the opposite direction – is consistent with the pattern over many years.

Association tables

Detailed tables for each of the ISC's constituent associations are available as supplements but are not published as part of the Census booklet (see back cover).

Multiple membership of associations

Every school included in the Census must belong to at least one of the ISC associations. Many schools belong to more than one. In the tables on pages 13 to 22, each school is recorded under one association only. This avoids counting the same school and its pupils more than once, but produces distortions in the apparent size of associations. For example, the Society of Headmasters & Headmistresses of Independent Schools (SHMIS) appears to have only 68 members. Its full membership on Census day was 94, but some of its heads are also members of other associations (chiefly HMC) and their schools' statistics are recorded under these bodies. Similarly, some schools in the Independent Schools Association (ISA) also belong to other associations and do not appear under ISA in the general tables. Many preparatory and junior schools are not listed separately from their senior schools even though their heads are members of IAPS.

Governing bodies of most senior and some preparatory schools belong to the Association of Governing Bodies of Independent Schools (AGBIS). The very small number of schools whose heads are in the process of joining, but do not yet belong to, an association of heads appear in the tables under AGBIS.

Acknowledgements

All but one of the 1,278 member schools are included in the 2004 Census. We are grateful to the heads, deputy heads, bursars, registrars, secretaries and other members of staff who provided the information.

Julian Bewick and his assistants at **Monkton Combe Computing Service** devoted many hours of patient and careful work to this survey, checking as well as entering the data as they were received from schools. They deserve our congratulations on producing a document which is valued by schools, associations, journalists, academic and media researchers, politicians, civil servants and others for the details it provides about the major part of the UK independent sector.

As this is the last of the twenty surveys for which I have been responsible during my time as director of the national information service, I would like to record my personal thanks to Julian Bewick for his dedication not only to these annual surveys but also to the many other statistical projects on which he has been engaged for ISIS/ISCis and ISC since the late 1970s: it has been a great pleasure to work with him.

All independent schools

Statistics for all independent schools in Great Britain, based on data from the government departments in England, Wales and Scotland, are available from:

ISC,
Grosvenor Gardens House,
35-37 Grosvenor Gardens,
London SW1W 0BS;
Telephone + 44 (0)20 7798 1500;
Fax +44 (0)20 7798 1531;
e-mail info@iscis.uk.net
website www.iscis.uk.net

Information on Scotland is also available from:

Scottish Council of Independent Schools,
21 Melville Street,
Edinburgh EH3 7PE;
Telephone + 44 (0)131 220 2106;
Fax + 44 (0)131 225 8594;
e-mail information@scis.org.uk

London, April 2004

ISC CENSUS 2004 : SUMMARY TABLES

TOTAL NUMBER IN CENSUS 2004 (see Table 1)

	Number	Percentage of total
Schools in census	1,277	99.9%
Total member schools	1,278	100.0%
Charities	1,061	83.1%
Others	216	16.9%

PUPILS

Boarders	Total	70,253	13.8%
	Boys	40,861	8.0%
	Girls	29,392	5.8%
Day	Total	437,774	86.2%
	Boys	219,618	43.2%
	Girls	218,156	42.9%
All	Boys	260,479	51.3%
	Girls	247,548	48.7%
TOTAL		508,027	100.0%

TOTAL NUMBER IN CENSUS 2004 (see Table 1)

Schools in Census: 1,277 ISC-member schools are included in the 2004 survey, recorded on Census Day 15 January. ISC schools are those in membership of the associations of governors, heads and bursars representing the majority of UK independent schools. The 508,027 pupils recorded in them in January 2004 account for more than 80% of the total number of pupils in independent schools in the UK, which is 620,000.

Day/Boarding: The Census shows that 86.2% of ISC school pupils are day boys and girls, 13.8% are boarders. Day pupils have increased in all but two of the past twenty-two years. After two years of growth in boarding, the number of boarders has fallen in 2003/04.

Boys/Girls: 51.3% of pupils are boys, 48.7% girls. When the Census was established on its present basis in 1982, girls represented only 41.7% of the total.

CHANGES SINCE 2003 (see Table 2)

		Number	% Change on 2003
Number of schools compared		1,267	
PUPILS			
Boarders	Total	69,542	<i>-1.4%</i>
		70,531	
	Boys	40,325	<i>-1.7%</i>
		41,018	
	Girls	29,217	<i>-1.0%</i>
		29,513	
Day	Total	435,800	<i>+0.3%</i>
		434,395	
	Boys	218,786	<i>+0.3%</i>
		218,119	
	Girls	217,014	<i>+0.3%</i>
		216,276	
All			
	Boys	259,111	<i>-0.0%</i>
		259,137	
	Girls	246,231	<i>+0.2%</i>
		245,789	
TOTAL		505,342	<i>+0.1%</i>
		504,926	

CHANGES SINCE 2003 (see Table 2)

Tables 2-9 on pages 13-18 and **Tables 14-15** on pages 21-22 compare 1,267 ISC schools which were included in the 2003 and 2004 surveys. In Tables 2 & 3 on pages 13/14, for example, the 2004 figures are shown in bold type, with 2003 figures below and the percentage changes in italics.

The increase in the total number of pupils is the ninth in succession - exceeding the eight years of growth after 1984. The number of day pupils has increased by 1,405 (0.3%) and the number of boarders has dropped by 989 (1.4%), giving an overall rise of 416, or 0.1%.

Numbers have risen in 17 of the 22 years of the Census. Changes in recent years have been: 2003 + 1.0% (net gain 5,128 pupils); 2002 + 1.7% (net gain 8,463); 2001 + 1.4% (net gain 6,557); 2000 + 0.8% (net gain 3,812); 1999 + 0.7% (net gain 3,398); 1998 + 1.6% (net gain 7,421); 1997 + 1.7% (net gain 7,640); 1996 + 0.6 (net gain 2,877); 1995 - 0.1% (net loss 509); 1994 - 1.0% (net loss 4,476); 1993 - 1.5% (net loss 6,973); 1992 - 0.2% (net loss 1,065); 1991 + 0.7% (net gain 3,079); 1990 + 1.0% (net gain 4,638).

AGE COHORTS (see Table 3)

Aged on 31 Aug 2003	Number	% Change on 2003
2	5,789	-1.3%
3	14,455	-2.6%
4	20,589	-2.2%
Cumulative 2-4	40,833	-2.2%
5	22,311	-0.8%
6	23,088	+2.5%
7	25,540	-2.1%
8	28,126	-3.2%
9	31,023	+3.1%
10	31,772	-2.7%
Cumulative 5-10	161,860	-0.6%
11	42,365	-1.6%
12	44,795	+0.9%
13	45,407	+2.7%
Cumulative 8-13	223,488	+0.0%
14	44,955	+0.4%
15	45,010	+3.3%
Cumulative 11-15	222,532	+1.2%
16	37,884	-2.2%
17	36,077	+0.8%
18	4,358	+5.6%
19	539	-8.3%
Cumulative 16-19	78,858	-0.5%

AGE COHORTS (see Table 3)

This table indicates the number of children by age and the change compared with the previous year, with cumulative figures for the main educational stages.

The total number of children of school age is declining. This is affecting numbers in the maintained sector throughout the under-11 cohorts: DfES projections for England show under-5s declining from 534,700 in 2003 to 513,000 in 2006 and primary ages, which began to decline in 1999, continuing to fall until 2012. Under-15s in maintained schools in England are projected to fall over the next ten years. In Scotland the under-15 school population will fall by 18% during the same period. Under-11s in ISC schools also record a decline.

The ISC 11-15 cohort has increased in size by 1.2%. This is the fourth successive rise among 11-15s, indicating that the post-recession increase in junior school numbers has progressed into the higher age range. (With the abolition of the government assisted places scheme, the number of 11-15 year-olds in independent schools was expected to fall steeply after 1998; in fact it has increased, as schools have succeeded in attracting full fee-payers or in helping pupils with their fees from bursary and scholarship funds.) Among 16-19 year-olds there is a cumulative drop of 0.5%, after increases in recent years.

FEES (see Tables 4 & 6)

Average termly fee	£	% Change on 2003
Boarding	£5,909	+9.1
Day fee/boarding schools	£3,107	+9.1
Day fee/day schools	£2,429	+10.1
Day fee average	£2,637	+9.7
Overall average	£3,074	+9.6

FEES (see Tables 4, 5 & 6)

The average rise in fees was 9.6%, compared with 7.0% in the previous year.

Note that the averages above are for schools of various types across the full age range (whereas it is generally true that fees for younger pupils are less than for older ones). Averages for day and boarding within particular types of school are more clearly differentiated in Tables 4 & 5. Note also the differences between day fees in entirely day schools and the higher day fees in schools with a mixture of day and boarding pupils: schools of the latter type usually have higher staff:pupil ratios and a longer school day and week.

Comparisons are made in Table 5 between increases in fees, average earnings and teachers' pay. The single most relevant comparison is with teachers' pay awards and incremental rises, since fees chiefly reflect:

- generous staffing (this Census records, in Table 14 on page 21, a further improvement in staff:pupil ratios);
- rising salaries and wages of teaching and non-teaching staff, most of which are beyond the direct control of schools which pay at least the nationally-agreed awards and incremental scales. Teachers' incremental rises add substantially to schools' salary bills. This year schools have also had to budget for increased employers' national insurance contributions and the steep rise – from 8.35% to 13.5% – in the employers' contribution to the Teachers' Pension Scheme;
- investment in buildings, facilities and equipment, which continues at high levels, as well as the rising cost of goods and services bought by schools.

See also the Introduction on page 3.

HELP WITH FEES (see Table 7)

Pupils receiving help from	Numbers	% of all pupils	% Change on 2003
Local education authorities	1,555	0.3%	-2.1%
Northern Ireland/Channel Islands	7,234	1.4%	-1.5%
The school	116,120	23.0%	+2.1%
Government AP scheme	4,543	0.9%	-46.5%
Nursery Assistance Scheme	25,664	5.1%	+0.4%
All other known sources	4,050	0.8%	+7.5%
Total	159,166	31.5%	-0.8%

HELP WITH FEES (see Table 7)

The increasing number of children receiving help with their fees, particularly from the schools, is a long-term trend; it accelerated during the early 1990s' recession as more families needed bursaries from schools to enable pupils at crucial examination stages to complete their courses. It has been boosted in recent years by schools providing more financial help to compensate for the loss of government assisted places.

This year the number of boys and girls receiving help from their schools through bursaries and scholarships has increased by 2.1% to 116,120 and they represent 23% of all pupils in ISC schools.

The proportion of children receiving help from various sources is 31.5%. (In 1982 the proportion was 15.8%.) The slight decrease of 0.8% to 159,166 is largely attributable to the drop in the number of pupils supported by the assisted places scheme. This Census covers the sixth year in which there has not been a new intake of pupils under that scheme, the phasing out of which began after the Labour government took office in 1997. The number of assisted place pupils is now 4,543, most of whom will leave their schools this summer (2004). (There will still be a few such pupils in schools until 2009, as some of those who took up assisted places in junior or preparatory schools work through the system.)

Fewer pupils have been placed by local education authorities. The number aided under the Government Nursery Assistance Scheme (5% of all pupils) has increased by 0.4%. 'All other known sources' include educational charitable trusts.

BUILDINGS & EQUIPMENT (see Table 8)

Spending	Amount	% on 2003
on new/refurb boarding accommodation		
Total (£m)	90.5	+31.0%
Per boarder (£)	1,301	+32.9%
on other new buildings		
Total (£m)	287.5	-3.2%
Per pupil (£)	568	-1.9%
on other improvements to buildings & equipment		
Total (£m)	144.7	+10.3%
Per pupil (£)	286	+11.9%
Total		
Total (£m)	522.6	+5.1%
Per pupil (£)	1,034	+6.6%

BUILDINGS & EQUIPMENT (see Table 8)

During 2003 schools spent £522.6 million on new and improved buildings and equipment, 5.1% more than in 2002. This was equivalent to £1,034 per pupil, 6.6% more than in the previous year. Spending on new and refurbished boarding accommodation accounted for £90.5 million (£1,301 per boarder), an increase of more than 30 per cent.

These levels of investment in the fabric and facilities of schools follow other substantial rises in recent years.

NEW PUPILS FROM OVERSEAS/ARMED FORCES (See Table 9)

New pupils who joined Jan 2003 - Jan 2004

	Number	% change since 2003	
		% of	
British		Br/For	
Expatriate	1,393	14.4%	+29.2%
Armed Forces	1,454	n/a	-6.1%
		% of	
Foreign pupils		Foreign	
France	145	1.7%	-9.4%
Germany	1,001	12.1%	+11.2%
Russia	303	3.7%	-4.4%
Spain	333	4.0%	-0.6%
Remainder of Europe (excl.UK)	548	6.6%	+4.0%
Africa	353	4.3%	-22.4%
North America	439	5.3%	-9.5%
C and S America & Caribbean	211	2.5%	-8.7%
Middle East	141	1.7%	-14.5%
Hong Kong	2,249	27.1%	-1.7%
Mainland China	1,102	13.3%	+13.1%
Taiwan	98	1.2%	-13.3%
Japan	284	3.4%	-5.0%
South Korea	423	5.1%	+3.2%
Malaysia	135	1.6%	-10.6%
Thailand	154	1.9%	-7.2%
India/Pakistan/Sri Lanka	98	1.2%	-21.6%
Remainder of Far East	190	2.3%	+43.9%
Australasia	87	1.0%	+33.8%
New Foreign pupils	8,294	100.0%	-0.1%
Total			
New Pupils from Overseas (excl. armed forces)	9,687	n/a	+3.3%

NEW PUPILS FROM OVERSEAS/ARMED FORCES (see Table 9)

These are pupils who joined ISC schools between January 2003 and January 2004 – NOT the total number of foreign and expatriate children (which is c.18,000).

The table on this page records the number of new foreign pupils from the continents, regions or countries indicated, the proportion of foreign pupils which each represents, and the percentage change since 2003. It also shows equivalent figures for children of British expatriates and families serving in the armed forces.

The number of new foreign pupils was almost unchanged (8,294 compared with 8,299 in the previous year), but an increase among new British expatriate children produced an overall increase in pupils from overseas of 3.3% to 9,687.

The Census confirms that Germany is by far the most important source of pupils from continental Europe: the number of German boys and girls increased by 11.2 per cent to 1,001 and constitutes 12.1% of international students in ISC schools. The total number of new students from mainland Europe is 2,330 (compared with 2,239 in the previous year).

The other notable increase is from the People's Republic of China (which has its own expanding private education sector): up by 13.1% to 1,102 pupils, accounting for 13.3% of international students. The total from the Far East is 4,445, compared with 4,402.

POST A-LEVEL LEAVERS (see Table 10)

Total no	36,794
% to university	89.2
% to other HE	3.2

POST A-LEVEL LEAVERS (see Table 10)

The historically high proportion of independent school post-A-level leavers going on to higher education (almost all to university) has increased slightly to 92.4%.

STAFFING (See Table 14)

	FULL TIME		PART TIME (fte)		TOTAL	
Men	19,075	43.6%	979	16.3%	20,054	40.3%
Women	24,652	56.4%	5,013	83.6%	29,665	59.7%
Total	43,727	100.0%	5,993	100.0%	49,720	100.0%

THE CENSUS IN DETAIL

TABLE 1
TOTAL NUMBERS OF SCHOOLS, BOARDING AND DAY PUPILS IN CENSUS

N.B. THIS TABLE SHOWS THE NUMBERS OF PUPILS IN ALL 1277 SCHOOLS WHICH TOOK PART IN THE 2004 CENSUS.

			HMC	SHMIS	AGBIS	GSA	IAPS	ISA	TOTAL
Number of schools in census			242	68	5	203	493	266	1,277
Number of member schools			243	68	5	203	493	266	1,278
Charities			235	66	5	202	419	134	1,061
Others			8	2	0	1	73	132	216
PUPILS	BOARDERS	Boys	26,236	3,798	1,226		7,525	2,076	40,861
		Girls	10,430	2,446	475	11,248	3,276	1,517	29,392
	DAY	Boys	102,796	12,373	497	2,112	71,803	30,037	219,618
		Girls	39,579	8,219	478	94,845	48,294	26,741	218,156
	TOTAL	Boys	129,032	16,171	1,723	2,112	79,328	32,113	260,479
		Girls	50,009	10,665	953	106,093	51,570	28,258	247,548
	GRAND TOTAL		179,041	26,836	2,676	108,205	130,898	60,371	508,027

SEE NOTE ON PAGE 5 ON MULTIPLE MEMBERSHIP OF ASSOCIATIONS

TABLE 2
NUMBER OF SCHOOLS, BOARDING AND DAY PUPILS

Note: Numbers for 2004 are printed in **BOLD** type. Numbers for 2003, together with % changes, are printed below them.

N.B. THIS AND SUBSEQUENT TABLES COMPARE RESULTS FROM THE 1267 SCHOOLS WHICH TOOK PART IN THE CENSUS IN 2003 and 2004

			HMC	SHMIS	AGBIS	GSA	IAPS	ISA	TOTAL	
Number of schools compared			241	68	5	203	489	261	1,267	
PUPILS	BOARDERS	Boys	25,797	3,798	1,226		7,525	1,979	40,325	
			26,150	3,802	1,190		7,914	1,962	41,018	-1.7%
		Girls	10,430	2,446	475	11,248	3,276	1,342	29,217	
			10,413	2,429	489	11,470	3,397	1,315	29,513	-1.0%
	DAY	Boys	102,796	12,373	497	2,112	71,632	29,376	218,786	
			102,136	12,048	465	2,006	72,048	29,416	218,119	+0.3%
		Girls	39,579	8,219	478	94,845	47,689	26,204	217,014	
			38,660	8,190	484	94,984	47,521	26,437	216,276	+0.3%
	TOTAL	Boys	128,593	16,171	1,723	2,112	79,157	31,355	259,111	
			128,286	15,850	1,655	2,006	79,962	31,378	259,137	-0.0%
		Girls	50,009	10,665	953	106,093	50,965	27,546	246,231	
			49,073	10,619	973	106,454	50,918	27,752	245,789	+0.2%
GRAND TOTAL			178,602	26,836	2,676	108,205	130,122	58,901	505,342	
			177,359	26,469	2,628	108,460	130,880	59,130	504,926	+0.1%
			+0.7%	+1.4%	+1.8%	-0.2%	-0.6%	-0.4%	+0.1%	

TABLE 3

NUMBER OF PUPILS IN JANUARY 2004 AND CHANGES SINCE 2003

Figures for 2004 are printed in **BOLD** type, those for 2003 are printed below them.

Age on 31 Aug 03	BOYS Boarders	BOYS Day	GIRLS Boarders	GIRLS Day	TOTAL
2-	0	3,423	3	3,622	7,048
	0	3,288	0	3,623	6,911
		+4.1%		-0.0%	+2.0%
3	0	6,891	4	7,560	14,455
	0	7,179	0	7,656	14,835
		-4.0%		-1.3%	-2.6%
4	1	10,103	4	10,481	20,589
	0	10,268	0	10,784	21,052
		-1.6%		-2.8%	-2.2%
5	1	10,964	5	11,341	22,311
	0	11,150	2	11,328	22,480
		-1.7%	+150.0%	+0.1%	-0.8%
6	7	11,476	14	11,591	23,088
	4	11,138	8	11,379	22,529
	+75.0%	+3.0%	+75.0%	+1.9%	+2.5%
7	124	12,721	110	12,585	25,540
	149	12,964	92	12,886	26,091
	-16.8%	-1.9%	+19.6%	-2.3%	-2.1%
8	641	13,765	289	13,431	28,126
	689	14,147	335	13,892	29,063
	-7.0%	-2.7%	-13.7%	-3.3%	-3.2%
9	1,128	14,822	549	14,524	31,023
	1,079	14,417	555	14,037	30,088
	+4.5%	+2.8%	-1.1%	+3.5%	+3.1%
10	1,540	14,926	845	14,461	31,772
	1,630	15,359	979	14,697	32,665
	-5.5%	-2.8%	-13.7%	-1.6%	-2.7%
11	2,682	19,102	2,185	18,396	42,365
	2,820	19,372	2,129	18,726	43,047
	-4.9%	-1.4%	+2.6%	-1.8%	-1.6%
12	3,478	19,753	2,567	18,997	44,795
	3,654	19,215	2,721	18,800	44,390
	-4.8%	+2.8%	-5.7%	+1.0%	+0.9%
13	5,060	18,372	3,340	18,635	45,407
	5,257	17,711	3,528	17,734	44,230
	-3.7%	+3.7%	-5.3%	+5.1%	+2.7%
14	5,663	17,692	3,834	17,766	44,955
	5,752	17,586	3,781	17,637	44,756
	-1.5%	+0.6%	+1.4%	+0.7%	+0.4%
15	5,969	17,463	4,116	17,462	45,010
	5,969	16,824	4,108	16,671	43,572
		+3.8%	+0.2%	+4.7%	+3.3%
16	6,381	13,532	5,046	12,925	37,884
	6,216	13,997	5,099	13,413	38,725
	+2.7%	-3.3%	-1.0%	-3.6%	-2.2%
17	6,077	12,680	4,927	12,393	36,077
	6,288	12,428	4,947	12,115	35,778
	-3.4%	+2.0%	-0.4%	+2.3%	+0.8%
18	1,378	1,032	1,176	772	4,358
	1,280	994	1,024	828	4,126
	+7.7%	+3.8%	+14.8%	-6.8%	+5.6%
19	195	69	203	72	539
	231	82	205	70	588
	-15.6%	-15.9%	-1.0%	+2.9%	-8.3%
TOTAL	40,325	218,786	29,217	217,014	505,342
	41,018	218,119	29,513	216,276	504,926
	-1.7%	+0.3%	-1.0%	+0.3%	+0.1%

TABLE 4
ALL - NUMBERS AND FEES BY AREAS

Analysis of pupil numbers and average termly fees.
(Percentage changes are based on 2003 figures)

AREA	No. of Schools	BOYS Boarding	BOYS Day	GIRLS Boarding	GIRLS Day	TOTAL Boarding	TOTAL Day	Boarding Fee	Day Fee Boarding Schools	Day Fee Day Schools	Day Fee Average	Average Fee
Scotland	39	1681	11054	1167	11055	2848	22109	£6174	£2582	£2264	£2390	£2804
The North	172	-1.3%	+1.2%	+1.6%	+0.2%	-0.1%	+0.7%	+8.0%	+8.2%	+9.0%	+8.6%	+8.5%
		3267	37093	2379	36844	5646	73937	£5363	£2758	£2099	£2209	£2423
		+2.6%	-0.5%	+2.0%	-0.2%	+2.3%	-0.3%	+8.9%	+7.9%	+9.2%	+9.0%	+8.9%
Wales	18	738	2836	431	3269	1169	6105	£5031	£2768	£2087	£2430	£2823
		+3.9%	+0.9%	+6.7%	-0.8%	+4.9%	-0.0%	+7.5%	+6.3%	+9.4%	+7.6%	+7.5%
W Midlands	124	3666	18884	3230	18758	6896	37642	£6013	£3204	£2296	£2573	£3105
		-7.2%	+0.9%	-4.0%	+0.5%	-5.7%	+0.7%	+9.3%	+9.4%	+11.8%	+10.9%	+10.4%
E Midlands	76	2853	13460	1674	13308	4527	26768	£5675	£2979	£2220	£2499	£2963
		-5.1%	+2.4%	-3.6%	+1.3%	-4.6%	+1.8%	+8.5%	+10.1%	+9.0%	+9.5%	+9.2%
East Anglia	97	2436	13862	1828	14594	4264	28456	£5525	£3210	£2222	£2622	£2984
		-0.2%	-0.2%	+1.3%	+0.4%	+0.4%	+0.1%	+9.5%	+9.5%	+10.0%	+9.8%	+9.7%
South & West	180	8693	25922	6216	26319	14909	52241	£5976	£2985	£2275	£2632	£3363
		-0.2%	-0.1%	-1.2%	+0.4%	-0.6%	+0.1%	+9.7%	+9.8%	+9.8%	+9.8%	+9.7%
Greater London	194	1496	37949	409	39234	1905	77183	£6501	£3437	£2896	£2949	£3033
		-1.5%	+0.1%	+0.5%	+0.3%	-1.1%	+0.2%	+9.6%	+9.3%	+10.6%	+10.5%	+10.4%
South East	355	14999	50823	11521	51159	26520	101982	£6052	£3565	£2683	£3021	£3636
		-1.9%	+0.5%	-1.2%	+0.4%	-1.6%	+0.4%	+9.0%	+9.1%	+9.7%	+9.4%	+9.3%
Ireland	10	178	6673	94	2298	272	8971	£3225	£904	£493	£662	£732
		-9.6%	-0.4%	-2.1%	+2.0%	-7.2%	+0.2%	+8.3%	+5.5%	+44.2%	+19.6%	+18.1%
All	1265	40007	218556	28949	216838	68956	435394	£5909	£3107	£2429	£2637	£3074
		-1.7%	+0.3%	-1.0%	+0.3%	-1.4%	+0.3%	+9.1%	+9.1%	+10.1%	+9.7%	+9.6%

NOTE: To avoid currency conversion, the Republic of Ireland has been omitted from this table.

TABLE 5
EARNINGS INCREASES, TEACHERS' AWARDS
AVERAGE TERMLY FEES (JANUARY TERM 2004)

Year	Teachers' Earnings Pay		HMC BOARD	HMC DAY	SHMIS BOARD	SHMIS DAY	AGBIS BOARD	AGBIS DAY	GSA BOARD	GSA DAY	IAPS BOARD	IAPS DAY	ISA BOARD	ISA DAY	ALL BOARD	ALL DAY
2000			4748	2013	3813	1973	*	*	4588	1917	3466	1981	4210	1701	4447	1941
	4.1%	3.3%	+5.8%	+6.9%	+6.8%	+5.4%	*	*	+7.2%	+7.7%	+8.5%	+6.7%	+6.4%	+5.0%	+6.4%	+6.7%
2001			5035	2156	4039	2117	*	*	4882	2045	3759	2108	4472	1810	4736	2072
	2.9%	3.7%	+7.9%	+7.5%	+7.4%	+7.3%	*	*	+7.6%	+7.9%	+6.8%	+7.2%	+7.7%	+7.0%	+7.7%	+7.4%
2002			5461	2327	4318	2302	*	*	4245	2211	4008	2267	4912	1950	5120	2235
	3.3%	3.5%	+7.2%	+6.6%	+8.0%	+7.8%	*	*	+7.1%	+7.5%	+5.9%	+7.2%	+8.0%	+6.4%	+7.1%	+7.0%
2003			5853	2483	4703	2519	*	*	5619	2375	4241	2440	5245	2068	5492	2396
	6.6%	2.9%	+9.0%	+9.7%	+10.4%	+8.8%			+9.3%	+10.5%	+8.9%	+9.4%	+8.7%	+9.8%	+9.1%	+9.7%
2004			6298	2747	5229	2705	*	*	6048	2631	4594	2669	5658	2267	5909	2637

NOTES

- Earnings figures are the increases in average earnings January to January (Office for National Statistics). The 2003 earnings figure of 6.6% is provisional.
- The teachers' pay figure is the national award paid in April 2003. Incremental rises, performance-related pay increases, enhanced salaries for newly-qualified teachers and increased employers' national insurance and teachers' pension contributions resulted in an overall increase in many schools' pay bills of 7 per cent or more.**
- A table showing the range of maximum termly fees is printed on page 16.
- Average fees are 'average fee per pupil', rather than 'average fee per school'.
- *Figures omitted. They would be misleading because of the small number of schools which are members of AGBIS but, temporarily, of no other association.

TABLE 6
RANGE OF FEES

Numbers of schools whose maximum termly fees are within £75 of the figures shown

	HMC BOARD	HMC DAY	SHMIS BOARD	SHMIS DAY	AGBIS BOARD	AGBIS DAY	GSA BOARD	GSA DAY	IAPS BOARD	IAPS DAY	ISA BOARD	ISA DAY
£600		1	1									
£750		1										1
£900		2										
£1050		1										
£1200								1		1		1
£1350				2		1				2		11
£1500										3		17
£1650									1	6		31
£1800		1								21		26
£1950				1				1	1	19		21
£2100		7						4		33		31
£2250		13	1	6				25		25		23
£2400		14		6		1		16		40		23
£2550		23		1				25		44		16
£2700		12		9				17		43	1	10
£2850	1	13		9				25		40		8
£3000		9		3				16	1	40		11
£3150		9	1	3	1			12	3	35		5
£3300		16		4				7	2	34	1	3
£3450		12		5				9	1	36	1	2
£3600	2	8		3		1		10	3	30		2
£3750		10	2	2				6	15	18	1	1
£3900	1	8		2				9	12	7	1	1
£4050		10		2				3	10	2	1	1
£4200		6		1				2	19	3	2	
£4350	1	12					3	3	14	1	4	2
£4500	1	9	1	2			3	3	25	3	2	3
£4650	1	5	2				2	2	34	2	5	2
£4800	7	10	3				3	1	15		3	
£4950	6	1	1	1			7	1	21		1	2
£5100	8	3	5	1			5	2	10		4	2
£5250	7	5	2			1	6	1	8		1	1
£5400	1	4	5				7		3		2	2
£5550	5	4	4	1			6		1		2	
£5700	9	2	3				5		2		1	
£5850	9	2	5		1		7		2		2	
£6000	7		2				6				1	
£6150	10		3				3					
£6300	8		1	1	1		2				2	1
£6450	20						4					
£6600	9		1				3				2	1
£6750	7		2				4					
£6900	7		1			1	5				1	
£7050	14						1					1
£7200	4		1									1
£7350	1				1		1				1	1
£7500	1				1						3	
£7650												
£7800			1				1					

This table shows the spread of fees for almost all schools which completed the Census. It omits a few schools which, because of exceptional circumstances (e.g. they are specialist schools), have untypically high or low fees.

TABLE 7
NUMBER OF PUPILS RECEIVING CONTRIBUTIONS TO FEES

Note: Numbers for 2004 are printed in **BOLD** type. Numbers for 2003, together with % changes, are printed below them.

	HMC	SHMIS	AGBIS	GSA	IAPS	ISA	TOTAL		
From Local Education Authorities	350	182	1	216	175	631	1,555	-2.1%	0.3%
	432	211	1	212	147	586	1,589		0.3%
Northern Ireland and Channel Islands	5,920	627	0	149	538	0	7,234	-1.5%	1.4%
	6,008	631	0	148	558	0	7,345		1.5%
From the school	48,874	8,449	495	21,873	24,473	11,956	116,120	+2.1%	23.0%
	47,250	8,013	492	21,269	24,921	11,752	113,697		22.5%
From Government Assisted Places Scheme	2,767	453	11	1,181	19	112	4,543	-46.5%	0.9%
	5,235	563	39	2,486	47	121	8,491		1.7%
Nursery Assistance Scheme	2,174	663	31	3,321	13,492	5,983	25,664	+0.4%	5.1%
	2,087	656	34	3,271	13,275	6,242	25,565		5.1%
From all other known sources	2,305	445	26	644	400	230	4,050	+7.5%	0.8%
	2,037	454	14	540	474	249	3,768		0.7%
TOTALS	62,390	10,819	564	27,384	39,097	18,912	159,166	-0.8%	31.5%
	63,049	10,528	580	27,926	39,422	18,950	160,455		31.8%
Percentage change since 2003	-1.0%	+2.8%	-2.8%	-1.9%	-0.8%	-0.2%	-0.8%		
Number of pupils helped as % of all pupils	34.9%	40.3%	21.1%	25.3%	30.0%	32.1%	31.5%		
	35.5%	39.8%	22.1%	25.7%	30.1%	32.0%	31.8%		

NOTES

- i) Contributions from Local Education Authorities include help given for special needs.
- ii) Help given by the Government to pupils in Northern Ireland is separate from Contributions from Local Education Authorities.
- iii) This table does not include pupils helped through HM Forces and Diplomatic allowances.
- iv) This table does not include help given to children of staff.

TABLE 8
NEW BUILDINGS AND EQUIPMENT, 2003

Figures for 2003 are printed in **BOLD** type, those for 2002 are printed below them.

	HMC	SHMIS	AGBIS	GSA	IAPS	ISA	TOTAL
Amount spent on new/reburbished boarding accommodation							
Total (in millions of pounds)	55.8	2.2	0.5	22.8	7.0	2.2	90.5
	51.2	2.1	0.6	8.0	5.4	1.7	69.0
Per Boarder (in pounds)	1541	347	269	2024	650	669	1301
	1400	329	377	694	481	527	978
Amount spent on new buildings							
Total (in millions of pounds)	114.2	21.5	2.4	61.9	63.9	23.6	287.5
	127.2	24.7	1.1	65.9	57.2	20.9	297.1
Per Pupil (in pounds)	639	801	881	572	490	400	568
	717	934	415	607	437	352	588
Amount spent on improvements to buildings and equipment							
Total (in millions of pounds)	62.7	10.8	0.8	29.0	31.0	10.2	144.7
	58.2	6.7	0.2	26.5	29.5	9.9	131.1
Per Pupil (in pounds)	351	403	297	268	238	173	286
	328	254	87	244	225	167	259
TOTAL							
Total (in millions of pounds)	232.8	34.5	3.6	113.8	101.9	36.0	522.6
	236.7	33.5	2.0	100.4	92.2	32.5	497.2
Per Pupil (in pounds)	1303	1286	1349	1051	783	611	1034
	1334	1267	743	925	704	549	984

TABLE 9**NEW PUPILS WHOSE PARENTS LIVE OVERSEAS AND/OR ARE IN THE ARMED FORCES**Figures for 2004 are printed in **BOLD** type, those for 2003 are printed below them.

These are numbers for pupils who have entered the school between January 2003 and January 2004.

	HMC	SHMIS	AGBIS	GSA	IAPS	ISA	TOTAL
British Pupils whose parents:							
live abroad (excl.Armed Forces)	729	86	85	201	178	114	1,393
	492	96	22	175	212	81	1,078
serve in Armed Forces	442	280	18	128	447	139	1,454
	464	222	3	196	489	175	1,549
Foreign Pupils whose permanent homes are in:							
France	53	17	0	25	36	14	145
	36	19	2	20	60	23	160
Germany	722	110	29	54	11	75	1,001
	623	107	31	58	11	70	900
Russia	139	38	2	31	19	74	303
	143	37	5	32	29	71	317
Spain	91	12	3	73	140	14	333
	76	15	6	95	132	11	335
Remainder of Europe (excl.UK)	248	66	3	55	59	117	548
	247	73	14	67	63	63	527
Africa	163	21	3	90	39	37	353
	210	49	6	105	48	37	455
North America	117	20	15	47	53	187	439
	113	18	11	65	53	225	485
C and S America & Caribbean	72	12	0	81	22	24	211
	81	28	2	62	30	28	231
Middle East	60	18	0	14	13	36	141
	54	22	2	27	15	45	165
Hong Kong	855	370	31	550	210	233	2,249
	859	397	24	544	187	278	2,289
Mainland China	543	184	26	197	12	140	1,102
	419	171	16	205	22	141	974
Taiwan	35	18	3	17	0	25	98
	45	24	0	15	3	26	113
Japan	74	41	1	70	24	74	284
	70	47	3	84	31	64	299
South Korea	115	63	0	54	120	71	423
	102	66	0	81	78	83	410
Malaysia	50	49	2	23	4	7	135
	67	52	1	20	4	7	151
Thailand	51	8	3	30	31	31	154
	49	17	1	36	41	22	166
India/Pakistan/Sri Lanka	46	11	2	6	9	24	98
	64	8	5	12	12	24	125
Remainder of Far East	62	51	6	40	13	18	190
	54	23	5	32	5	13	132
Australasia	20	13	0	13	20	21	87
	10	7	1	23	8	16	65
New Pupils from Overseas	3,516	1,122	129	1,470	835	1,222	8,294
	3,322	1,180	135	1,583	832	1,247	8,299
New British and Foreign Pupils whose	4,245	1,208	214	1,671	1,013	1,336	9,687
parents live overseas (excl.Armed Forces)	3,814	1,276	157	1,758	1,044	1,328	9,377

TABLE 9A**FEES PAID FROM OVERSEAS SOURCES**Figures for 2004 are printed in **BOLD** type, those for 2003 are shown below.

	Pupils	Fees/Year
Day pupils	1,075	13,079,700
	700	6,028,500
Full boarding pupils	17,174	300,974,400
	15,405	240,409,200
TOTAL	18,249	314,054,100
	16,105	246,437,700

Note on Table 9A

Schools submitted the number of pupils and total termly fee for the January Term. These fees have been multiplied by three to obtain annual figures.

The following pupils have been **Included**: foreign nationals who live overseas; UK citizens who have worked continuously in an overseas country for one year or more.

The following pupils are **excluded**: pupils whose fees are paid by UK military personnel who are employed abroad; UK civil servants (including diplomats) who are employed abroad in British embassies; overseas nationals who have been resident in UK for one year or more; overseas civil servants (including diplomats) who work in embassies or high commissions in UK.

TABLE 10
POST A-LEVEL LEAVERS

	HMC	SHMIS	AGBIS	GSA	ISA	TOTAL
Total number recorded *	23,594	2,286	347	9,028	1,505	36,794
% to Higher Education (Incl. Univ.)	93.0	79.3	92.7	95.6	84.8	92.4
% to University	90.1	74.2	91.3	92.3	80.1	89.2
% to re-take A-level in Indep Sector	1.1	1.2	3.4	1.0	1.3	1.1
% to retake A-level in Maintained Sector	1.0	1.0	0.5	0.7	0.5	0.9
% to further education or training	1.9	11.6	1.7	1.5	2.9	2.5
% to employment	2.0	6.8	1.9	1.8	4.4	2.3
% Others	4.1	3.2	2.8	2.4	9.1	3.8

* Note - GSA, AGBIS and ISA include a significant number of schools which do not have sixth forms; pre A-level leavers do not appear in this table.

TABLE 11
SIZES OF SCHOOLS

School Size (Pupils)	NUMBER OF SCHOOLS						ALL
	HMC	SHMIS	AGBIS	GSA	IAPS	ISA	
- 50					1	5	6
51 - 100	1	1		1	16	29	48
101 - 150				2	61	52	115
151 - 200		4		3	88	64	159
201 - 250		7		10	75	31	123
251 - 300	5	7		17	88	25	142
301 - 350	11	12	1	18	64	22	128
351 - 400	8	8		23	35	10	84
401 - 450	22	6		21	29	9	87
451 - 500	18	7	1	14	19	5	64
501 - 550	13	4	1	16	9	6	49
551 - 600	12	6		11	5	2	36
601 - 650	17	2		10		2	31
651 - 700	11	3	1	9		1	25
701 - 750	27		1	6		2	36
751 - 800	13			6	1		20
801 - 850	12	1		6			19
851 - 900	14			6	2		22
901 - 950	8			9			17
951 - 1000	8			6			14
1001 - 1050	11			4			15
1051 - 1100	7			1			8
1101 - 1150	5			3			8
1151 - 1200	3						3
1201 - 1250	1					1	2
1251 - 1300	4						4
1301 - 1350				1			1
1351 - 1400	1						1
1401 - 1450	3						3
1451 - 1500	2						2
1501 - 1550	1						1
1551 - 1600	1						1
1651 - 1700	1						1
2001 - 2050	1						1
2251 - 2300	1						1
2301 - 2350	1						1

TABLE 12
BOARDING/DAY RATIOS

	NUMBER OF SCHOOLS						ALL
	HMC	SHMIS	AGBIS	GSA	IAPS	ISA	
% BOARDERS							
0-1	98	18		122	294	219	751
1-5	6	2		8	26		42
5-10	14	3		9	33	8	67
10-15	10	4	1	11	35	5	66
15-20	12	9		3	24	1	49
20-25	6	3		5	18	4	36
25-30	10	3		9	12	2	36
30-35	7	4		3	11	3	28
35-40	8	2		4	5	3	22
40-45	3	4	1	4	3	2	17
45-50	7	2		4	3	4	20
50-55	5		1	2	5	2	15
55-60	6	2		2	5	2	17
60-65	7	2		2	3	3	17
65-70	6	1				3	10
70-75	13	1		1	2		17
75-80	5	1		1	2		9
80-85	5	1		4	2	1	13
85-90	4	2		2	2		10
90-95	1	1	1	4	2	1	10
95-99	4			1	2		7
99-100	6	3	1	2	4	3	19

TABLE 13
BOY/GIRL RATIOS

	NUMBER OF SCHOOLS						ALL
	HMC	SHMIS	AGBIS	GSA	IAPS	ISA	
% BOYS							
0-1				156	33	14	203
1-5				22	11	2	35
5-10				10	6	4	20
10-15				7	4	3	14
15-20		2		3	4	2	11
20-25		1		2	7	2	12
25-30				1	4	5	10
30-35				2	4	4	10
35-40			1		6	9	16
40-45		3			7	15	25
45-50	12	5			23	32	72
50-55	33	11	2		56	38	140
55-60	40	15	1		92	54	202
60-65	40	11			72	34	157
65-70	20	5			42	15	82
70-75	15	6			21	3	45
75-80	5	3			9	5	22
80-85	2	1			2	4	9
85-90	7	1			3	3	14
90-95	16				6	1	23
95-99	6				9	2	17
99-100	47	4	1		72	15	139

TABLE 14
STAFF AND PUPILS : NUMBERS AND RATIOS

Figures for 2004 are printed in **BOLD** type, those for 2003 are printed below them.

	HMC	SHMIS	AGBIS	GSA	IAPS	ISA	TOTAL
Full time							
Men	10,897	1,306	172	1,565	3,788	1,347	19,075
	10,879	1,295	172	1,488	3,807	1,321	18,962
Women	5,652	1,213	112	7,419	7,020	3,236	24,652
	5,420	1,146	107	7,406	6,925	3,159	24,163
Total	16,549	2,519	284	8,984	10,808	4,583	43,727
	16,299	2,441	279	8,894	10,732	4,480	43,125
Part time - Number of staff							
Men	810	186	24	421	582	543	2,566
	756	193	13	434	530	544	2,470
Women	2,040	620	63	3,318	3,186	2,176	11,403
	1,936	628	42	3,299	2,929	2,173	11,007
Total	2,850	806	87	3,739	3,768	2,719	13,969
	2,692	821	55	3,733	3,459	2,717	13,477
Part time - Hours							
Men	10,225	2,383	146	5,598	7,059	6,428	31,839
	9,003	2,370	92	5,263	6,393	6,613	29,734
Women	27,685	8,331	694	46,307	48,825	31,108	162,950
	24,314	8,645	568	47,212	45,263	30,705	156,707
Total	37,910	10,714	840	51,905	55,884	37,536	194,789
	33,317	11,015	660	52,475	51,656	37,318	186,441
Full time equivalent (32.5 PT hours = 1 FT)							
Men	11,211	1,379	176	1,737	4,005	1,544	20,054
	11,156	1,367	174	1,649	4,003	1,524	19,876
Women	6,503	1,469	133	8,843	8,522	4,193	29,665
	6,168	1,412	124	8,858	8,317	4,103	28,984
Total	17,715	2,848	309	10,581	12,527	5,737	49,720
	17,324	2,779	299	10,508	12,321	5,628	48,861
Pupils							
Boys	128,593	16,171	1,723	2,112	79,157	31,355	259,111
	128,286	15,850	1,655	2,006	79,962	31,378	259,137
Girls	50,009	10,665	953	106,093	50,965	27,546	246,231
	49,073	10,619	973	106,454	50,918	27,752	245,789
Total	178,602	26,836	2,676	108,205	130,122	58,901	505,342
	177,359	26,469	2,628	108,460	130,880	59,130	504,926
Pupils + weighting for Sixth Form							
Boys	162,655	19,353	2,260	2,114	79,168	33,050	298,600
	162,848	18,936	2,157	2,008	79,976	33,059	298,984
Girls	64,401	12,780	1,185	124,552	51,007	28,887	282,812
	63,508	12,633	1,217	125,248	50,964	29,072	282,642
Total	227,056	32,133	3,445	126,666	130,175	61,937	581,412
	226,356	31,569	3,374	127,256	130,940	62,131	581,626
Ratios - raw							
Pupil/Teacher	10.08	9.42	8.66	10.23	10.39	10.27	10.16
	10.24	9.52	8.79	10.32	10.62	10.51	10.33
Boys/Girls	71% / 29%	60% / 40%	64% / 36%	1% / 99%	60% / 40%	53% / 47%	51% / 49%
	72% / 28%	59% / 41%	62% / 38%	1% / 99%	61% / 39%	53% / 47%	51% / 49%
Men/Women	63% / 37%	48% / 52%	56% / 44%	16% / 84%	31% / 69%	26% / 74%	40% / 60%
	64% / 36%	49% / 51%	58% / 42%	15% / 85%	32% / 68%	27% / 73%	40% / 60%
Ratios - with Sixth Form weighting							
Pupil/Teacher	12.82	11.28	11.15	11.97	10.39	10.80	11.69
	13.07	11.36	11.28	12.11	10.63	11.04	11.90
Boys/Girls	71% / 29%	60% / 40%	65% / 35%	1% / 99%	60% / 40%	53% / 47%	51% / 49%
	71% / 29%	59% / 41%	63% / 37%	1% / 99%	61% / 39%	53% / 47%	51% / 49%
Men/Women	63% / 37%	48% / 52%	56% / 44%	16% / 84%	31% / 69%	26% / 74%	40% / 60%
	64% / 36%	49% / 51%	58% / 42%	15% / 85%	32% / 68%	27% / 73%	40% / 60%

TABLE 15
FULL TIME STAFF CHANGES

Figures for 2004 are printed in **BOLD** type, those for 2003 are printed below them.

	HMC	SHMIS	AGBIS	GSA	IAPS	ISA	TOTAL
Arriving From:							
Independent Schools	683	86	15	447	576	182	1,989
	707	115	12	452	640	206	2,132
Maintained Schools	514	163	4	478	408	265	1,832
	548	148	4	554	487	264	2,005
ITT at Univ or Training Coll	292	26		82	93	30	523
	233	38	4	89	72	37	473
New Grads (degree or other courses)	152	41	6	63	115	49	426
	155	24	5	54	101	28	367
Industry, etc.	67	13		23	30	30	163
	71	20		26	40	42	199
Other (Incl. retirement)	250	68	4	231	269	135	957
	236	57	6	226	261	167	953
Total	1,958	397	29	1,324	1,491	691	5,890
	1,950	402	31	1,401	1,601	744	6,129
Going To:							
Independent Schools	524	79	6	287	457	128	1,481
	610	69	9	312	442	157	1,599
Maintained Schools	180	50	1	116	102	109	558
	185	69		143	143	100	640
ITT at Univ or Training Coll	7	1		3	2	3	16
				6	11	1	18
New Grads (degree or other courses)	2				1	4	7
		3	1				4
Industry, etc.	54	20		34	31	23	162
	46	11		24	29	24	134
Other (Incl. retirement)	913	149	15	722	734	364	2,897
	809	178	15	718	694	337	2,751
Total	1,680	299	22	1,162	1,327	631	5,121
	1,650	330	25	1,203	1,319	619	5,146
Net Gain from:							
Independent Schools	159	7	9	160	119	54	508
	97	46	3	140	198	49	533
Maintained Schools	334	113	3	362	306	156	1,274
	363	79	4	411	344	164	1,365
ITT at Univ or Training Coll	285	25		79	91	27	507
	233	38	4	83	61	36	455
New Grads (degree or other courses)	150	41	6	63	114	45	419
	155	21	4	54	101	28	363
Industry, etc.	13	-7		-11	-1	7	1
	25	9		2	11	18	65
Other (Incl. retirement)	-663	-81	-11	-491	-465	-229	-1,940
	-573	-121	-9	-492	-433	-170	-1,798
Total	278	98	7	162	164	60	769
	300	72	6	198	282	125	983
Full time Staff							
Total	16,549	2,519	284	8,984	10,808	4,583	43,727
	16,299	2,441	279	8,894	10,732	4,480	43,125
Turnover as % of Number of Full Time Staff	12.0	16.3	10.4	14.9	13.9	15.4	13.7
	12.0	16.5	11.1	15.8	14.9	16.6	14.2
Gain as % of Number of Full Time Staff	1.7	4.0	2.5	1.8	1.5	1.3	1.8
	1.8	2.9	2.2	2.2	2.6	2.8	2.3

Areas used in these statistics are groups of counties and unitary authorities, as follows:

County Reference Number	Area Reference Number	County Reference Number	Area Reference Number
1 Bedfordshire	5 E Midlands	30 Manchester Area	2 The North
2 Berkshire	9 South East	31 Merseyside Area	2 The North
3 Bristol	7 South & West	32 Norfolk	6 East Anglia
4 Buckinghamshire	9 South East	33 Northamptonshire	5 E Midlands
5 Cambridgeshire	6 East Anglia	34 Northumberland	2 The North
6 Channel Islands	7 South & West	35 Nottinghamshire	5 E Midlands
7 Cheshire	2 The North	36 Oxfordshire	9 South East
8 Cornwall	7 South & West	37 Shropshire	4 W Midlands
9 Cumbria	2 The North	38 Somerset	7 South & West
10 Derbyshire	5 E Midlands	39 Staffordshire	4 W Midlands
11 Devon	7 South & West	40 Suffolk	6 East Anglia
12 Dorset	7 South & West	41 Surrey	9 South East
13 Durham	2 The North	42 Sussex (East)	9 South East
14 Essex	6 East Anglia	43 Sussex (West)	9 South East
15 Gloucestershire	4 W Midlands	44 Teesside Area	2 The North
16 Hampshire	7 South & West	45 Tyne and Wear Area	2 The North
17 Herefordshire	4 W Midlands	46 Warwickshire	4 W Midlands
18 Hertfordshire	9 South East	47 West Midlands	4 W Midlands
19 Isle of Man	2 The North	48 Wiltshire	7 South & West
20 Isle of Wight	7 South & West	49 Worcestershire	4 W Midlands
21 Kent	9 South East	50 Yorkshire Area East	2 The North
22 Lancashire	2 The North	51 Yorkshire Area North	2 The North
23 Leicestershire & Rutland	5 E Midlands	52 Yorkshire Area South	2 The North
24 Lincolnshire	5 E Midlands	53 Yorkshire Area West	2 The North
25 London Central	8 Greater London	54 Wales (North)	3 Wales
26 London NW	8 Greater London	55 Wales (South)	3 Wales
27 London SW	8 Greater London	56 Scotland	1 Scotland
28 London NE	8 Greater London	57 Northern Ireland	10 Ireland
29 London SE	8 Greater London	58 Republic of Ireland	10 Ireland

INDEPENDENT SCHOOLS COUNCIL information service

Grosvenor Gardens House, 35-37 Grosvenor Gardens, London SW1W 0BS

Phone 020 7798 1500 Email info@iscis.uk.net

Joint National Directors : D. J. Woodhead & R.C. Davison

The Census is published on behalf of the Independent Schools Council by ISCis, its information and media arm.

ISCis publishes leaflets and booklets on various aspects on independent education (see outside back cover) and ***The ISC Guide to Accredited Independent Schools***, a paperback guide to 1,280 day and boarding schools for boys and girls aged 2 - 19. Its Press Office handles relations with the media.

There are eight regions covering the entire British Isles which publish handbooks giving details of schools in their areas.

ISC International helps parents living overseas and in the UK to find suitable schools for their children. It operates a consultancy service for multi-national companies whose staff require independent schools for their children. For details, please write to ISC International at the above address.

ISCis PUBLICATIONS

THE ANNUAL CENSUS 2004 -- this booklet price £15 (including postage). Association supplements for 2004 £3 per Association (HMC, SHMIS, GSA, IAPS, ISA) or £15 for the set. Back numbers of the Census: 2003 £10, others £3.50 each (including postage).

The leaflets and other publications listed below are available from ISCis, 35-37 Grosvenor Gardens, London SW1W 0BS and are supplied on receipt of two first class stamps each, except where the price is stated.

PLANNING AN INDEPENDENT EDUCATION -- an introductory leaflet for parents interested in sending their children to independent schools

WHAT IS ISC? -- explains the organisation

HOW YOU CAN AFFORD AN INDEPENDENT EDUCATION -- planning ahead to reduce costs, or receiving help with school fees

QUESTIONS TO ASK when you visit a school

WHY ACCREDITATION MATTERS TO PARENTS - - what accreditation means

A GUIDE TO CHARITABLE FUNDING FOR EDUCATION - - for parents who need to seek help with school fees from education trusts

THE GUIDE TO ACCREDITED INDEPENDENT BOARDING SCHOOLS IN THE UK (BSA) -- Price £1 in UK; by credit card £5 continental Europe, £10 elsewhere (including airmail postage)

INDEPENDENT SCHOOLS : THE LEGAL CASE -- by Anthony Lester QC and David Pannick QC. Price £5 (including postage)

INDEPENDENT EDUCATION IN WESTERN EUROPE (1997) -- price £5 (including postage)

mISC MAGAZINE -- price £2 per copy (3 issues a year)

THE ISC GUIDE TO ACCREDITED INDEPENDENT SCHOOLS

A free guide for parents to 1,280 schools in membership of ISC
with details including fees, pupil numbers, examination results
and 50 pages of guidance on how to choose a school.

Available from ISC, 35-37 Grosvenor Gardens, London SW1W 0BS

Cheque for £1.50 to cover p & p in UK;

by credit card £5 elsewhere in Europe or £7.50 in rest of world