

INDEPENDENT SCHOOLS INFORMATION SERVICE

ANNUAL CENSUS 1992

STATISTICAL SURVEY OF INDEPENDENT SCHOOLS
56 Buckingham Gate London SW1E 6AG Telephone 071 630 8793 or 8794

INDEPENDENT SCHOOLS
INFORMATION SERVICE

56 Buckingham Gate, London SW1E 6AG 071-630 8793/4

Director: D. J. Woodhead
Deputy Director (Press & PR): R. C. Davison

NATIONAL ISIS was established in 1972 as an information centre by the leading Associations of independent schools in Britain. It is now part of the Independent Schools Joint Council.

It publishes leaflets and booklets on various aspects of independent education (see inside back cover) and "Choosing Your Independent School," a paperback guide to 1,400 day and boarding schools for boys and girls aged 2 — 19 in the UK and Eire. Its Press Office handles relations with the media.

There are eight ISIS regions covering the entire United Kingdom which publish handbooks giving details of schools in their areas.

The **ISIS ASSOCIATION** is for friends and supporters of independent education. The annual subscription is £15 for UK members and £17 for overseas members. For further details, please write to the above address.

ISIS INTERNATIONAL helps parents living overseas and in the U.K. to find suitable schools for their children. It operates a consultancy service for multinational companies whose staff require independent schools for their children. For details and costs, please write to the Senior Consultant, ISIS International, at the above address.

Page		
2	LIST of Associations	
3-7	INTRODUCTION to ISIS Census 1992	
8	ALL	Table 1 Number of schools and pupils
9	COMPARATIVE	Table 2 Comparative totals and staff/pupil ratios for schools in 1991 and 1992 Census
10		Table 3 Number of Pupils and Comparisons with 1991
11		Table 4 Pupils and Fees analysed by Areas
12		Table 5 Fee Ranges
13		Table 6 Average fees
14		Table 7 Contributions to fees
15		Table 8 Expenditure on Buildings and Equipment
16		Table 9 Children with parents overseas and/or in the Armed Forces
17		Table 10 Leavers to Higher Education
18		Table 11 School sizes
		Table 12 Boarding/Day ratio
		Table 13 Boy/Girl ratio
19	NOTES on Tables for Individual Associations	
20	HMC	Table 14A Number of Pupils and comparisons with 1991
21		Table 14B Pupils and Fees analysed by areas
22		Table 14C,D,E,F,G Staffing and Courses of Study
23		Table 14H,I,J Sources of Entry and Destinations of Leavers
24	SHMIS	Table 15A Number of Pupils and comparisons with 1991
25		Table 15B Pupils and Fees analysed by areas
26		Table 15C,D,E,F,G Staffing and Courses of Study
27		Table 15H,I,J Sources of Entry and Destinations of Leavers
28	GBA	Table 16A Number of Pupils and comparisons with 1991
29		Table 16B Pupils and Fees analysed by areas
30		Table 16C,D,E,F,G Staffing and Courses of Study
31		Table 16H,I,J Sources of Entry and Destinations of Leavers
32	GSA	Table 17A Number of Pupils and comparisons with 1991
33		Table 17B Pupils and Fees analysed by areas
34		Table 17C,D,E,F,G Staffing and Courses of Study
35		Table 17H,I,J Sources of Entry and Destinations of Leavers
36	GBGSA	Table 18A Number of Pupils and comparisons with 1991
37		Table 18B Pupils and Fees analysed by areas
38		Table 18C,D,E,F,G Staffing and Courses of Study
39		Table 18H,I,J Sources of Entry and Destinations of Leavers
40	IAPS	Table 19A Number of Pupils and comparisons with 1991
41		Table 19B Pupils and Fees analysed by areas
42		Table 19C,D,E Staffing
		Table 19H,I Sources of Entry and Destinations of Leavers
43	ISAI	Table 20A Number of Pupils and comparisons with 1991
44		Table 20B Pupils and Fees analysed by Areas
45		Table 20C,D,E,F,G Staffing and Courses of Study
46		Table 20H,I,J Sources of Entry and Destinations of Leavers

INDEPENDENT SCHOOLS INFORMATION SERVICE

Statistical Survey of Independent Schools - January 1992

These tables contain information derived from a survey carried out in January 1992 among members of:-

- HMC - predominantly boys' schools whose heads are members of the Headmasters' Conference and whose governing bodies are members of GBA
- SHMIS - predominantly boys' schools whose heads are members of the Society of Headmasters and Headmistresses of Independent Schools and whose governing bodies are members of GBA
- GBA - predominantly boys' schools whose governing bodies are members of the Governing Bodies Association
- GSA - girls' schools whose heads are members of the Girls' Schools Association and whose governing bodies belong to GBGSA
- GBGSA - girls' schools whose governing bodies are members of the Governing Bodies of Girls' Schools Association
- IAPS - boys' and girls' schools whose heads are members of the Incorporated Association of Preparatory Schools
- ISAI - boys' and girls' schools whose heads are members of the Independent Schools Association Incorporated but not of any other Association

The information relates to January 1992, except that expenditure on buildings and equipment is for the financial year ending at various dates in 1991.

ISIS (Director: David Woodhead), 56 Buckingham Gate, London SW1E 6AG (Telephone 071-630 8793/4)

ISIS CENSUS 1992 INTRODUCTION

By David Woodhead, Director, National ISIS

Few institutions are proving as resistant as independent schools to the effects of Britain's longest and deepest recession since the 1930s. Despite the difficulties faced by families in maintaining school fee payments, the truism that education is the last item to be cut in family budgets appears to be borne out in this year's Census.

ISIS-member schools contain 1,065 fewer children than a year ago. This is a drop of a mere 0.23 per cent in a school population of over 470,000 and a much smaller decline than the severity of the recession led us to expect. It is, nevertheless, the first drop in numbers since 1982/3 (though a much smaller one than on that occasion) and breaks an unprecedented eight-year period of continuous growth. The independent sector's share of the child population, on the other hand, continues to rise. So does the number of pupils receiving help with their fees, which is another effect of the recession.

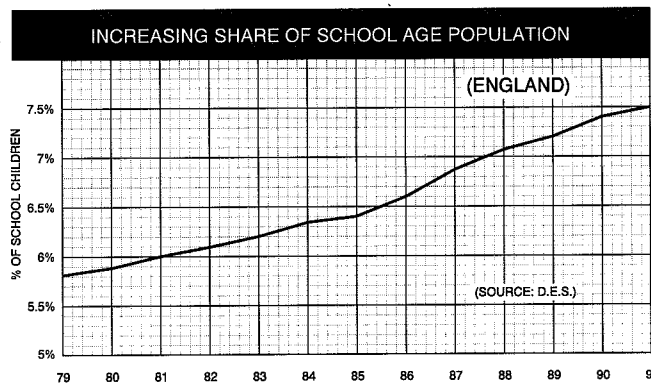
Census returns in January 1992 record 475,288 pupils attending 1,364 schools in the United Kingdom (and a few in the Irish Republic) which took part in the survey. (Table 1, page 8).

Comparisons, however, are made between the 1,344 schools which participated in both the 1992 and 1991 surveys. This is done to ensure that we compare like with like. In these schools there were 470,492 pupils aged between 2 and 19, compared with 471,557 a year ago. (Table 2, page 9).

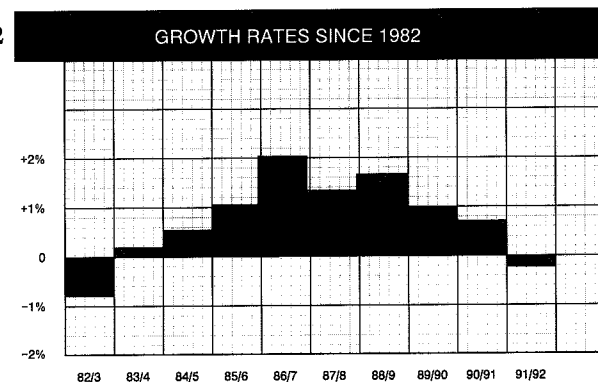
Eighty per cent of all independently-educated pupils are in ISIS-member schools belonging to the associations of heads and governors listed on page 3. (Altogether there are nearly 2,500 independent schools in the United Kingdom, educating more than 600,000 children).

Graphs below show (1) the increasing proportion of children in independent schools in England since 1979, based on Department of Education and Science (DES) figures, and (2) growth rates in ISIS-member schools since 1982 (the first year our Census appeared in its present form).

1



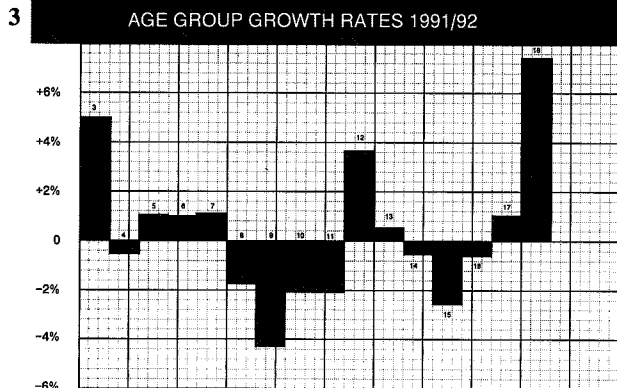
2



DES statistics show that independent schools are educating a steadily rising proportion of the child population. This was 5.8 per cent in England and Wales in the late 1970s and is now 7.5 per cent overall; in Scotland it is 4 per cent. It varies between age groups and different parts of the British Isles. For example, 10 per cent of secondary school children and nearly 11 per cent of *all* children in the south-east of England are in the independent sector. Twenty per cent of sixth-formers (16-19 year-olds) are in independent schools.

Independent schools' increasing 'market share' has been accentuated by the overall drop in the number of school-age children nationally which has been a feature of the last 15 years but which is now being reversed. According to the DES, *maintained* sector secondary school rolls fell by 0.3 per cent in 1990-91, the most recent year for which figures are available, while primary rolls rose by 1.4 per cent. (Rising primary school pupil numbers are working through into senior schools and therefore reversing the decline in overall numbers).

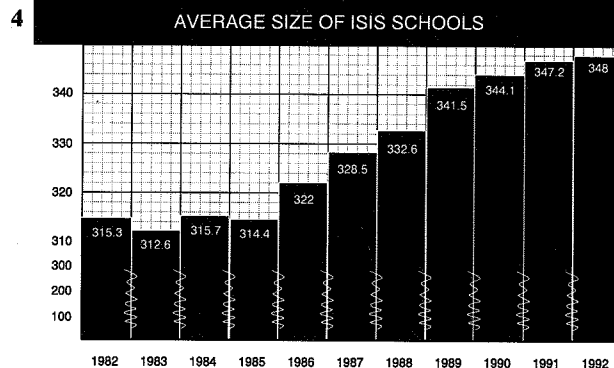
The third graph shows the ages of pupils at which numbers have grown or fallen between 1991 and 1992. This and Table 3, page 10, confirm the generally strong demand for places for 2 - 7 year-olds in



pre-preparatory departments. The profile is less healthy at other ages, such as between 8 and 11. Nationally the number of pupils of secondary school age continues to fall, as noted above. Last year this was reflected in falling numbers between 14 and 18. This year the drop occurs between 14 and 16. But last year's decline in sixth-form numbers, which was the first for six years, is reversed because of an increase in 17 and 18 year-olds.

There are 3,114 more day boys and girls (a 0.8 per cent rise) than in 1991. The percentage increase among girls (1.3) continues to outstrip the boys' (0.4) and maintains the rising proportion of girls who account for 45.9 per cent of pupils in ISIS schools compared with 41.7 per cent ten years ago.

The fourth graph is new. It shows the increase in pupil numbers reflected in the growth in the *average* size of schools since 1982.



But the decline in full boarding continues. Boy boarders are down by 4.7 per cent, slightly worse than last year, and girls by 2.8 per cent, a small improvement on 1991. Weekly boarding is also down for the first time since we began to record weekly and full boarding separately six years ago, although the numbers are relatively small (454 boys and 116 girls).

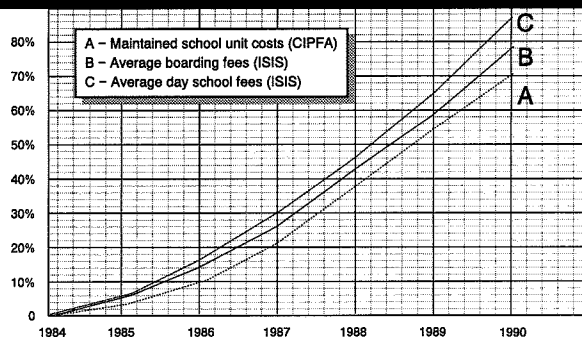
School fees increased in 1991-92 by 12.0 per cent. The corresponding figure for 1990-91 was 12.6 per cent. Average termly fees are recorded in Table 4, page 11 and Table 6, page 13. The former includes a regional breakdown of the analysis of pupil numbers and average termly fees; the latter compares percentage increases in average boarding and day fees (under school associations) over a five-year period with increases in inflation, as measured by the Retail Prices Index, average earnings (Department of Employment figures) and teachers' pay (DES).

Why, parents often ask, do school fees rise by a substantially greater amount than inflation? The question is particularly appropriate after a year in which inflation has more than halved. The answer lies in the labour and capital intensive nature of education and it applies to the maintained as well as independent sector, although maintained school costs are less visible than those of independent schools. It is illustrated in the fifth graph, which is new. This shows, over six years, the close correlation between the percentage growth in maintained school unit costs (as measured by the Chartered Institute of Public Finance & Accountancy) and rises in average independent boarding and day school fees.

Teaching and non-teaching staff salaries are the largest item in any

5

RISES IN UNIT COSTS/FEEES



5

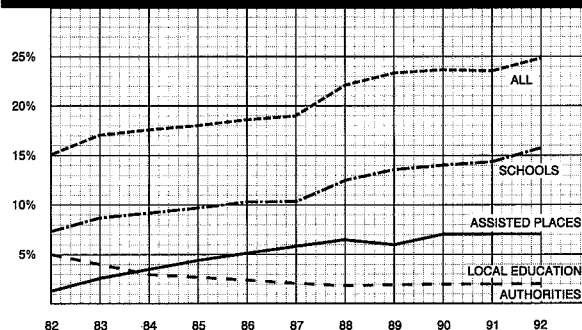
school budget. They account for up to 80 per cent of a day school's costs and up to 60 per cent in a boarding school. Average earnings consistently run ahead of the RPI and teachers' salaries have done so in most years. In 1990-91 (April to March) the overall increase in teachers' pay nationally was 10.0 per cent, but this did not take account of incremental rises - which in an average school might add another 2 per cent to teacher costs - or non-teaching staff costs. The rise in average earnings in 1991-92 (calendar year) was 7.1 per cent.

Parents usually cite small class sizes as one of their main reasons for choosing independent schools. Small classes mean more teachers, so generous staffing coupled with rising staff salaries and wage costs and continuing investment in improved buildings, facilities and equipment account for fee increases. Table 2, page 9 shows another improvement in staff:pupil ratios to 1:10.9 overall and 1:12.6 with the weighting for sixth-forms.

The Census records a significant increase in the number of children receiving help with school fees - up from 110,054 to 117,117, a rise of 7,063 or 6.4 per cent. (Table 7, page 14 and the sixth graph). Most of this additional help is being given by the schools themselves, largely in response to problems encountered by parents hit by the recession. In these cases schools' bursary funds are being stretched to the limit to ensure children's continuity of education.

6

PUPILS RECEIVING HELP WITH FEES



Almost 25 per cent of children in ISIS-member schools are receiving assistance with fees from various sources. Most of them - 74,135, compared with 68,883 a year ago - are being helped by school scholarships and bursaries; they account for 15.8 per cent. The next largest group (31,201 or 6.6%) hold government assisted places. Places paid for by local education authorities show another small rise to 7,633 as do those wholly or partly funded from other sources, such as charitable trusts (4,148).

Table 8, page 15 and the seventh graph show the amount spent per pupil on new and improved buildings and equipment. Schools are maintaining a high level of investment. Although total expenditure has fallen marginally to £256.9 per million, the amount per pupil has increased slightly to £546.

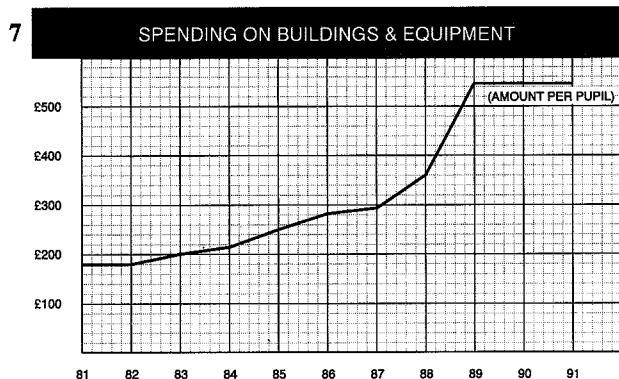


Table 9, page 16 records new pupils from overseas who have joined schools since the previous Census day in January. The total number of foreign pupils is almost unchanged. The main increases have occurred among children from Hong Kong and the remainder of the Far East, the main decreases in those from the Middle East and the Americas. There are fewer British children whose parents live abroad or serve in the armed forces.

Table 10, page 17 records post A-level leavers only (not pupils over 15). Three of the associations in this table - GBGSA, GSA and ISAI - include some schools which do not have sixth-forms and therefore do not offer A-level courses. Their numbers of A-level leavers need to be read with this in mind.

GENERAL & ASSOCIATION TABLES

All the general tables and graphs are contained on pages 3 to 18. Those which follow (pages 20 to 46) relate to particular associations of schools, *indicated by the initials at the top of each page.*

DUAL MEMBERSHIP

Some schools are members of more than one association. For the sake of clarity and to avoid their statistics being counted twice, these schools are recorded in the Census under one association only. This does, however, produce distortions in the apparent size of associations.

The Society of Headmasters & Headmistresses of Independent Schools (SHMIS) appears (on page 8) as having only 50 members whereas its full membership is 69; 19 have dual membership with the Headmasters' Conference and they are shown in the HMC figures. There are 27 schools in membership of the Independent Schools Association Incorporated (ISAI) which are also in membership of other associations and therefore do not appear in the ISAI tables.

ACKNOWLEDGEMENTS

Only one of our 1,365 member schools failed to return its Census form. I am grateful to the heads, deputy heads, bursars, secretaries and other members of staff who cooperated and the chairmen, president and secretaries of the associations. Julian Bewick and the Monkton Combe Computing Service devoted many hours of patient and careful work to this survey. They must be congratulated on producing a document which is widely valued by schools, journalists,

commentators, researchers, educationalists and others for the detailed information it provides on the major part of the independent sector. John Widdowson's advice was appreciated by school staff who needed help in completing their returns.

THE INDEPENDENT SECTOR

Figures for pupils at all independent schools in Great Britain, based on statistics from the Department of Education & Science, the Welsh Office and the Scottish Education Department, are available from National ISIS. Information for Scotland is available separately from ISIS Scotland, Floor 2/1, 11 Castle Street, Edinburgh EH2 3AH; telephone 031-220 2106.

April 1992

TABLE 1
TOTAL NUMBERS OF SCHOOLS, BOARDING AND DAY PUPILS IN CENSUS

N.B. THIS TABLE SHOWS THE NUMBERS OF PUPILS IN ALL 1364 SCHOOLS WHICH TOOK PART IN THE 1992 CENSUS. 1372 SCHOOLS WERE INCLUDED IN THE 1991 CENSUS, SO TOTALS ON THIS PAGE SHOULD NOT BE COMPARED WITH THOSE FOR 1991.

			HMC	SHMIS*	GBA	GSA	GBGSA	IAPS	ISAI*	TOTAL
Number of schools in census			233	50	17	245	12	526	281	1,364
Number of member schools			233	50	17	245	12	526	282	1,365
Educational Charities			230	48	16	242	10	434	138	1,118
Limited Companies			0	0	0	1	0	38	56	95
Proprietary			2	0	0	1	0	54	84	141
PUPILS	FULL BOARDERS	Boys	33,249	5,492	1,709	19		13,085	2,155	55,709
		Girls	7,983	1,340	828	17,413	175	3,751	1,365	32,855
	WEEKLY BOARDERS	Boys	1,681	428	86	5		2,692	522	5,414
		Girls	389	136	36	2,883	139	879	254	4,716
	DAY	Boys	91,956	7,083	3,624	1,823	548	64,006	27,046	196,086
		Girls	20,696	3,241	1,851	92,864	3,241	30,620	27,995	180,508
	TOTAL	Boys	126,886	13,003	5,419	1,847	548	79,783	29,723	257,209
		Girls	29,068	4,717	2,715	113,160	3,555	35,250	29,614	218,079
	GRAND TOTAL		155,954	17,720	8,134	115,007	4,103	115,033	59,337	475,288

* See note about dual membership on page 6.

TABLE 2

NUMBER OF SCHOOLS, BOARDING AND DAY PUPILS. STAFF/PUPIL RATIOS.

Numbers for 1992 are printed in normal type. Numbers for 1991, together with % changes, are printed in italic type below them.

			HMC	SHMIS	GBA	GSA	GBGSA	IAPS	ISAI	TOTAL	
Number of schools compared			233	48	17	243	12	523	268	1,344	
PUPILS	FULL BOARDERS	Boys	33,249	4,884	1,709	19		13,085	1,949	54,895	
			34,463	5,255	1,824	31		14,047	1,957	57,577	-4.66%
		Girls	7,983	1,242	828	17,413	175	3,734	1,278	32,653	
			7,745	1,150	866	18,297	257	3,916	1,349	33,580	-2.76%
	WEEKLY BOARDERS	Boys	1,681	424	86	5		2,692	519	5,407	
			1,812	465	79	8		2,930	567	5,861	-7.75%
		Girls	389	136	36	2,883	139	879	254	4,716	
			357	134	30	2,973	160	915	263	4,832	-2.40%
	DAY	Boys	91,956	7,066	3,624	1,772	548	63,638	26,047	194,651	
			91,192	6,786	3,631	1,687	503	63,431	26,562	193,792	+0.44%
		Girls	20,696	3,234	1,851	91,739	3,241	30,227	27,182	178,170	
			19,438	2,759	1,836	91,203	3,379	29,492	27,808	175,915	+1.28%
	TOTAL	Boys	126,886	12,374	5,419	1,796	548	79,415	28,515	254,953	
			127,467	12,506	5,534	1,726	503	80,408	29,086	257,230	-0.89%
		Girls	29,068	4,612	2,715	112,035	3,555	34,840	28,714	215,539	
			27,540	4,043	2,732	112,473	3,796	34,323	29,420	214,327	+0.57%
GRAND TOTAL			155,954	16,986	8,134	113,831	4,103	114,255	57,229	470,492	
			155,007	16,549	8,266	114,199	4,299	114,731	58,506	471,557	-0.23%
			+0.61%	+2.64%	-1.60%	-0.32%	-4.56%	-0.41%	-2.18%	-0.23%	
STAFF/PUPIL RATIO	- raw		1:10.9	1: 9.8	1: 9.5	1:10.8	1:11.1	1:11.0	1:11.3	1:10.9	
			1:11.0	1: 9.9	1:10.6	1:10.8	1:11.0	1:11.4	1:11.9	1:11.1	
	- weighted		1:14.2	1:11.9	1:11.6	1:12.7	1:12.4		1:11.8	1:12.6	
			1:14.3	1:12.1	1:12.8	1:12.7	1:12.2		1:12.4	1:12.9	

Note: For the weighted ratios, each sixth form pupil is counted as two.

TABLE 3

NUMBER OF PUPILS IN JANUARY 1992 AND CHANGES SINCE 1991

Figures for 1992 are printed in normal type, those for 1991 and per cent changes are printed in *italic type* below.

TOTAL AGE ON 31 AUG 91	BOYS			GIRLS			TOTAL
	BOARDS FULL	DAY WEEKLY	DAY	BOARDS FULL	DAY WEEKLY	DAY	
2	0	0	1,304	0	0	1,448	2,752
	0	0	<i>1,259</i>	0	0	<i>1,334</i>	<i>2,593</i>
			<i>+3.6%</i>			<i>+8.5%</i>	<i>+6.1%</i>
3	0	0	4,557	0	0	4,536	9,093
	0	0	<i>4,305</i>	0	0	<i>4,349</i>	<i>8,654</i>
			<i>+5.9%</i>			<i>+4.3%</i>	<i>+5.1%</i>
4	1	0	7,791	2	0	7,594	15,388
	<i>6</i>	0	<i>7,628</i>	4	0	<i>7,637</i>	<i>15,475</i>
			<i>-0.5%</i>			<i>-0.6%</i>	<i>-0.6%</i>
5	7	3	8,426	6	2	8,414	16,858
	<i>13</i>	3	<i>8,491</i>	4	4	<i>8,141</i>	<i>16,656</i>
			<i>-0.8%</i>			<i>+3.4%</i>	<i>+1.2%</i>
6	51	26	8,916	25	10	8,468	17,496
	<i>58</i>	22	<i>8,797</i>	23	10	<i>8,394</i>	<i>17,304</i>
			<i>+1.4%</i>			<i>+0.9%</i>	<i>+1.1%</i>
7	362	97	11,076	137	47	9,911	21,630
	<i>442</i>	<i>113</i>	<i>10,872</i>	<i>180</i>	<i>41</i>	<i>9,714</i>	<i>21,362</i>
			<i>+1.9%</i>			<i>+14.6%</i>	<i>+2.0%</i>
8	1,316	249	12,120	479	128	10,628	24,920
	<i>1,532</i>	<i>271</i>	<i>12,200</i>	<i>515</i>	<i>153</i>	<i>10,693</i>	<i>25,364</i>
			<i>-0.7%</i>			<i>-16.3%</i>	<i>-0.6%</i>
9	2,050	380	12,793	810	236	11,502	27,771
	<i>2,260</i>	<i>428</i>	<i>13,443</i>	<i>928</i>	<i>232</i>	<i>11,720</i>	<i>29,011</i>
			<i>-4.8%</i>			<i>+1.7%</i>	<i>-1.9%</i>
10	2,846	509	14,022	1,330	314	12,432	31,453
	<i>3,126</i>	<i>613</i>	<i>14,327</i>	<i>1,425</i>	<i>359</i>	<i>12,285</i>	<i>32,135</i>
			<i>-2.1%</i>			<i>-12.5%</i>	<i>-2.1%</i>
11	4,225	785	19,115	2,931	577	16,937	44,570
	<i>4,543</i>	<i>902</i>	<i>19,277</i>	<i>3,122</i>	<i>668</i>	<i>17,007</i>	<i>45,519</i>
			<i>-0.8%</i>			<i>-0.4%</i>	<i>-2.1%</i>
12	5,256	1,079	18,840	3,600	612	16,911	46,298
	<i>5,331</i>	<i>1,073</i>	<i>17,851</i>	<i>3,507</i>	<i>624</i>	<i>16,219</i>	<i>44,605</i>
			<i>+0.6%</i>			<i>+4.3%</i>	<i>+3.8%</i>
13	7,114	496	17,195	3,940	582	16,226	45,553
	<i>7,316</i>	<i>557</i>	<i>16,821</i>	<i>4,097</i>	<i>526</i>	<i>15,908</i>	<i>45,295</i>
			<i>-11.0%</i>			<i>+10.6%</i>	<i>+0.6%</i>
14	7,527	471	16,538	4,284	560	15,742	45,122
	<i>7,839</i>	<i>511</i>	<i>16,441</i>	<i>4,396</i>	<i>594</i>	<i>15,570</i>	<i>45,351</i>
			<i>-7.8%</i>			<i>+1.1%</i>	<i>-0.5%</i>
15	7,941	479	16,188	4,574	661	15,429	45,272
	<i>8,538</i>	<i>588</i>	<i>16,513</i>	<i>4,867</i>	<i>660</i>	<i>15,318</i>	<i>46,484</i>
			<i>-18.5%</i>			<i>+0.2%</i>	<i>+0.7%</i>
16	7,743	434	13,273	5,223	504	11,273	38,450
	<i>8,174</i>	<i>420</i>	<i>12,978</i>	<i>5,269</i>	<i>495</i>	<i>11,336</i>	<i>38,672</i>
			<i>+3.3%</i>			<i>+1.8%</i>	<i>-0.6%</i>
17	7,217	330	11,642	4,560	439	10,010	34,198
	<i>7,225</i>	<i>301</i>	<i>11,523</i>	<i>4,564</i>	<i>420</i>	<i>9,649</i>	<i>33,682</i>
			<i>+9.6%</i>			<i>+3.7%</i>	<i>+1.5%</i>
18	1,108	63	796	651	44	634	3,296
	<i>1,047</i>	<i>52</i>	<i>748</i>	<i>607</i>	<i>45</i>	<i>564</i>	<i>3,063</i>
			<i>+5.8%</i>			<i>+7.2%</i>	<i>+7.6%</i>
19	131	6	59	101	0	75	372
	<i>127</i>	<i>7</i>	<i>48</i>	<i>72</i>	<i>1</i>	<i>77</i>	<i>332</i>
			<i>-14.3%</i>			<i>-100.0%</i>	<i>-2.6%</i>
TOTAL	54,895	5,407	194,651	32,653	4,716	178,170	470,492
	<i>57,577</i>	<i>5,861</i>	<i>193,792</i>	<i>33,580</i>	<i>4,832</i>	<i>175,915</i>	<i>471,557</i>
			<i>-4.7%</i>			<i>-2.4%</i>	<i>-0.2%</i>

TABLE 4 - ALL NUMBERS AND FEES BY AREAS

ANALYSIS OF PUPIL NUMBERS AND AVERAGE TERMLY FEES (PERCENT CHANGES ARE BASED ON 1991 FIGURES)

AREA	No. of Schools	BOYS			GIRLS			TOTAL			Boarding	Weekly	Day Fee	Day Fee	Day Fee	Average
		Boarding	Full	Weekly	Boarding	Full	Weekly	Boarding	Full	Weekly	Fee	Boarding	Boarding	Day	Average	Fee
Scotland	53	2889	65	10658	1928	115	10538	4817	180	21196	£2878	£2388	£1172	£1095	£1140	£1470
		-2.8%	-24.4%	+1.8%	+1.3%	-6.5%	+4.1%	-1.2%	-13.9%	+2.9%	+10.6%	+11.8%	+12.9%	+11.7%	+12.4%	+11.8%
The North	194	5134	353	39653	3250	327	33218	8384	680	72871	£2648	£2215	£1311	£1026	£1084	£1253
		-5.3%	-9.7%	+0.4%	-2.2%	-3.8%	+2.4%	-4.1%	-7.0%	+1.3%	+11.1%	+13.2%	+12.1%	+13.4%	+12.9%	+12.6%
Wales	30	1136	115	2798	595	152	3106	1731	267	5904	£2474	£2021	£1386	£936	£1189	£1497
		-5.6%	+7.5%	-2.2%	-18.2%	+27.7%	-1.2%	-10.3%	+18.1%	-1.7%	+11.7%	+10.1%	+12.0%	+6.7%	+10.1%	+10.6%
W Midlands	148	6527	687	18894	4105	642	17685	10632	1329	36579	£2929	£2194	£1501	£1083	£1258	£1646
		-4.6%	+2.7%	+0.8%	-4.7%	-7.1%	-0.2%	-4.6%	-2.3%	+0.3%	+11.6%	+11.9%	+12.6%	+12.9%	+12.7%	+12.3%
E Midlands	165	7638	829	21033	4286	885	21193	11924	1714	42226	£2965	£2321	£1427	£1132	£1275	£1670
		-6.3%	+16.4%	+0.0%	-2.7%	-8.3%	+0.5%	-5.0%	+2.2%	+0.3%	+10.6%	+11.6%	+12.4%	+11.3%	+11.8%	+11.4%
East Anglia	94	2972	492	12755	1822	369	11583	4794	861	24338	£2669	£2334	£1493	£1045	£1244	£1499
		-8.5%	-5.6%	+0.5%	-5.5%	+17.5%	-0.1%	-7.4%	+3.1%	+0.2%	+11.4%	+11.2%	+13.0%	+13.2%	+13.2%	+12.5%
South & West	144	9513	537	15871	6394	716	15066	15907	1253	30937	£2912	£2211	£1389	£1035	£1264	£1834
		-5.7%	-15.8%	-0.3%	-0.1%	-6.6%	+3.8%	-3.6%	-10.8%	+1.7%	+10.7%	+11.4%	+11.7%	+9.4%	+11.0%	+10.9%
Greater London	166	1765	245	31783	271	57	28755	2036	302	60538	£3200	£2798	£1696	£1361	£1417	£1475
		+9.4%	-50.8%	+0.7%	+11.5%	-30.5%	+0.3%	+9.7%	-47.9%	+0.5%	+11.8%	+12.8%	+12.8%	+13.4%	+13.3%	+13.2%
South East	336	16632	1995	34779	9616	1436	34577	26248	3431	69356	£2956	£2574	£1640	£1174	£1403	£1860
		-4.1%	-7.2%	+0.5%	-3.6%	+2.0%	+1.0%	-3.9%	-3.5%	+0.7%	+11.8%	+11.5%	+11.9%	+12.9%	+12.3%	+12.0%
Ireland	14	689	89	6427	386	17	2449	1075	106	8876	£1523	£1869	£837	£667	£766	£857
		-1.0%	-1.1%	+0.4%	+5.5%	-26.1%	+2.3%	+1.2%	-6.2%	+0.9%	+11.6%	+11.7%	+11.7%	+5.9%	+9.4%	+9.2%
All	1344	54895	5407	194651	32653	4716	178170	87548	10123	372821	£2875	£2380	£1447	£1136	£1258	£1582
		-4.7%	-7.7%	+0.4%	-2.8%	-2.4%	+1.3%	-4.0%	-5.3%	+0.8%	+11.2%	+11.7%	+12.3%	+12.6%	+12.4%	+12.0%

(A new method of calculating average fees has been used this year.
The figures shown are now 'average fee per pupil', rather than 'average fee per school'.)

TABLE 5

FEES

Numbers of schools whose maximum termly fees are within £35 of the figures shown											
HMC	SHMIS	GSA	CBGSA	IAPS	ISAI						
BOARD DAY	BOARD DAY	BOARD DAY	BOARD DAY	BOARD DAY	BOARD DAY	BOARD DAY	BOARD DAY	BOARD DAY	BOARD DAY	BOARD DAY	BOARD DAY
£350											1
£420											1
£490											3
£560											7
£630											9
£700											26
£770											28
£840											28
£910											36
£980											32
£1050											27
£1120											34
£1190											40
£1260											43
£1330											40
£1400											33
£1470											27
£1540											40
£1610											24
£1680											48
£1750											36
£1820											22
£1890											19
£1960											11
£2030											16
£2100											5
£2170											15
£2240											3
£2310											17
£2380											2
£2450											35
£2520											23
£2590											36
£2660											16
£2730											31
£2800											16
£2870											14
£2940											15
£3010											4
£3080											2
£3150											2
£3220											1
£3290											2
£3360											3
£3430											1
£3500											1
£3570											1
£3640											2
£3710											1
£3780											1
£3850											1
£3920											2
£3990											1
£4060											2
£4130											2
£4200											1

This table shows the spread of fees for almost all schools which completed the Census. It omits a few schools which, due to exceptional circumstances (e.g. they are specialist schools), have untypically high or low fees.

TABLE 6

INFLATION RATES. EARNINGS INCREASES. TEACHERS' AWARDS.
AVERAGE TERMLY FEES (JANUARY TERM 1992)

YEAR	INFLATION	EARNINGS	TEACHERS' PAY		HMC		SHMIS		GBA		GSA		GBGSA		IAPS		ISAI		ALL	
					BOARD	DAY	BOARD	DAY	BOARD	DAY	BOARD	DAY	BOARD	DAY	BOARD	DAY	BOARD	DAY	BOARD	DAY
1987				1697	967	1620	946	1726	825	1515	771			1287	764	1324	575			
	3.3%	7.7%	16.4%	12.1%	11.9%	9.3%	8.8%	3.9%	12.5%	12.5%	12.5%			11.9%	11.8%	7.8%	13.0%			
1988				1902	1082	1770	1029	1793	928	1705	867			1440	854	1427	650			
	4.9%	9.4%	6.3%	9.9%	10.2%	10.5%	10.5%	4.7%	8.4%	10.9%	11.8%			9.0%	10.1%	9.4%	10.8%			
1989				2090	1192	1955	1137	1878	1006	1890	969	1699	840	1570	940	1561	720			
	7.7%	9.1%	7.8%	11.3%	11.7%	8.5%	6.6%	9.2%	13.6%	11.9%	11.9%	4.7%	7.1%	11.4%	11.9%	14.3%	13.7%			
1990				2524	1066	2147	1083	2010	1003	2285	969	1745	857	1834	1014	1811	855	2275	995	
	9.1%	9.3%	7.5%	13.2%	12.0%	14.9%	12.0%	21.5%	10.2%	13.6%	12.9%	16.0%	9.2%	13.0%	12.9%	10.2%	11.8%	13.6%	12.5%	
1991				2858	1194	2466	1213	2443	1105	2596	1094	2025	936	2073	1145	1995	956	2585	1119	
	4.1%	7.1%	10.0%	11.1%	12.1%	10.8%	12.6%	13.2%	14.3%	11.5%	13.8%	10.1%	16.3%	11.1%	12.1%	11.8%	11.3%	11.2%	12.4%	
1992				3174	1338	2733	1366	2766	1263	2895	1245	2229	1089	2303	1283	2230	1064	2875	1258	

NOTES

- i) Inflation rates are from January to January, based on the increase in the Retail Prices Index.
- ii) Earnings figures are the increases in average earnings, January to January. (Department of Employment).
- iii) The latest teachers' pay figure is the average increase between April 1990 and March 1991.
- iv) A table showing the range of maximum termly fees is printed on page 12.
- v) A new method of calculating average fees has been used this year
The figures shown below the line are 'average fee per pupil', rather than 'average fee per school'.

TABLE 7
NUMBER OF PUPILS RECEIVING CONTRIBUTIONS TO FEES (JANUARY 1992)

Numbers for 1992 are printed in normal type, numbers for 1991 are printed in italics below them.

	HMC	SHMIS	GBA	GSA	GBGSA	IAPS	ISAI	TOTAL
from Local Education Authorities	5,514	716	81	423	7	401	491	7,633
	<i>5,438</i>	<i>738</i>	<i>85</i>	<i>510</i>	<i>8</i>	<i>345</i>	<i>475</i>	<i>7,599</i>
from the school	28,466	4,474	1,711	15,417	571	15,957	7,539	74,135
	<i>26,493</i>	<i>4,060</i>	<i>1,207</i>	<i>14,110</i>	<i>494</i>	<i>15,229</i>	<i>7,290</i>	<i>68,883</i>
from Government Assisted Places Scheme	19,758	418	601	9,818	74	522	10	31,201
	<i>19,254</i>	<i>342</i>	<i>557</i>	<i>9,339</i>	<i>62</i>	<i>522</i>	<i>5</i>	<i>30,081</i>
from all other known sources	1,734	245	32	1,277	17	632	211	4,148
	<i>1,530</i>	<i>213</i>	<i>26</i>	<i>865</i>	<i>17</i>	<i>592</i>	<i>248</i>	<i>3,491</i>
TOTALS	55,472	5,853	2,425	26,935	669	17,512	8,251	117,117
	<i>52,715</i>	<i>5,353</i>	<i>1,875</i>	<i>24,824</i>	<i>581</i>	<i>16,688</i>	<i>8,018</i>	<i>110,054</i>

TABLE 8
NEW BUILDINGS AND EQUIPMENT, 1991

Figures for 1991 are printed in normal type, those for 1990 are printed in italics below them.

	HMC	SHMIS	GBA	GSA	GBGSA	IAPS	ISAI	TOTAL
Amount spent on new buildings								
Total (in millions of pounds)	88.6 78.2	8.8 7.8	3.4 4.4	28.4 38.5	0.8 1.3	30.3 33.6	10.1 7.8	170.3 171.7
Per Pupil (in pounds)	568 504	517 473	414 529	249 337	188 310	264 293	176 133	362 364
Amount spent on improvements to buildings and equipment								
Total (in millions of pounds)	41.9 44.5	3.8 3.3	1.8 1.7	19.3 18.0	0.4 0.3	15.4 12.8	4.1 5.1	86.6 85.7
Per Pupil (in pounds)	268 287	222 201	218 207	169 157	95 76	134 111	72 86	183 181
TOTAL								
Total (in millions of pounds)	130.5 122.7	12.6 11.2	5.2 6.1	47.7 56.5	1.2 1.7	45.6 46.4	14.2 12.9	256.9 257.4
Per Pupil (in pounds)	836 791	740 674	633 737	418 494	283 387	399 404	248 220	546 545

TABLE 9

NEW PUPILS WHOSE PARENTS LIVE OVERSEAS AND/OR ARE IN THE ARMED FORCES

These are new pupils who joined schools between January 1991 and January 1992.

Numbers for 1992 are printed in normal type, those for 1991 are printed in italic type below them.

	HMC	SHMIS	GBA	GSA	GBGSA	IAPS	ISAI	TOTAL
British Pupils whose parents:								
live abroad (excl.Armed Forces)	831 <i>888</i>	137 <i>139</i>	53 <i>54</i>	322 <i>399</i>	1 <i>1</i>	443 <i>462</i>	77 <i>99</i>	1,864 <i>2,042</i>
serve in Armed Forces	612 <i>657</i>	178 <i>201</i>	37 <i>51</i>	386 <i>398</i>	7 <i>2</i>	795 <i>926</i>	306 <i>358</i>	2,321 <i>2,593</i>
Foreign Pupils whose permanent homes are in:								
Africa	200 <i>188</i>	65 <i>52</i>	11 <i>15</i>	135 <i>152</i>	4 <i>4</i>	104 <i>109</i>	84 <i>94</i>	603 <i>614</i>
U.S.A.	98 <i>113</i>	7 <i>16</i>	4 <i>2</i>	41 <i>50</i>	0 <i>0</i>	55 <i>71</i>	391 <i>389</i>	596 <i>641</i>
Canada	27 <i>25</i>	3 <i>4</i>	0 <i>0</i>	10 <i>10</i>	3 <i>5</i>	16 <i>11</i>	57 <i>38</i>	116 <i>93</i>
Central and S America and Caribbean	49 <i>48</i>	9 <i>20</i>	7 <i>6</i>	49 <i>63</i>	0 <i>3</i>	21 <i>23</i>	17 <i>23</i>	152 <i>186</i>
Middle East	48 <i>89</i>	21 <i>45</i>	6 <i>8</i>	40 <i>49</i>	0 <i>0</i>	51 <i>41</i>	37 <i>64</i>	203 <i>296</i>
Hong Kong	447 <i>450</i>	151 <i>128</i>	46 <i>57</i>	343 <i>323</i>	9 <i>10</i>	101 <i>79</i>	228 <i>136</i>	1,325 <i>1,183</i>
Remainder of Far East	390 <i>337</i>	81 <i>84</i>	40 <i>37</i>	250 <i>255</i>	1 <i>5</i>	129 <i>131</i>	160 <i>182</i>	1,051 <i>1,031</i>
Australasia	46 <i>43</i>	9 <i>7</i>	2 <i>6</i>	16 <i>16</i>	0 <i>0</i>	31 <i>14</i>	16 <i>33</i>	120 <i>119</i>
Europe(excl.U.K.)	568 <i>521</i>	116 <i>154</i>	34 <i>47</i>	312 <i>256</i>	27 <i>47</i>	240 <i>236</i>	210 <i>244</i>	1,507 <i>1,505</i>
Total Foreign Pupils	1,873 <i>1,814</i>	462 <i>510</i>	150 <i>178</i>	1,196 <i>1,174</i>	44 <i>74</i>	748 <i>715</i>	1,200 <i>1,203</i>	5,673 <i>5,668</i>
Total British and Foreign pupils whose parents live overseas (excl.Armed Forces.)	2,704 <i>2,702</i>	599 <i>649</i>	203 <i>232</i>	1,518 <i>1,573</i>	45 <i>75</i>	1,191 <i>1,177</i>	1,277 <i>1,302</i>	7,537 <i>7,710</i>

TABLE 10
POST A-LEVEL LEAVERS

Post A-level Leavers *	HMC	SHMIS	GBA	GBGSA	ISAI
‡ to Higher Education	83	66	71	81	66
‡ to University	61	35	43	58	41
‡ of University entrants to:					
Arts	35	35	22	49	36
Science	28	31	32	30	40
Engineering/Technology	13	18	14	4	8
Social Science	23	16	32	17	15

* Note - GSA, GBGSA and ISAI include a significant number of schools which do not have sixth forms; pre A-level leavers do not appear in this table.

SCHOOL SIZE (PUPILS)	HMC	SHMIS	GBA	GSA	GBGSA	IAPS	ISAI
0 - 50						3	9
50 - 100						39	25
100 - 150	1	1		3	1	83	75
150 - 200		4		15	3	148	56
200 - 250	3	5	3	15		93	40
250 - 300	9	13	1	22		73	24
300 - 350	18	12		24	1	39	19
350 - 400	14	2	2	33	2	21	8
400 - 450	16	1		16	2	11	12
450 - 500	20	2	1	18	2	9	3
500 - 550	10	1	2	17		2	5
550 - 600	21	2		17	1		2
600 - 650	21	5	1	10		2	
650 - 700	15	1	1	6			
700 - 750	9	1		12		1	
750 - 800	12			6			
800 - 850	10		2	6			
850 - 900	10			5			1
900 - 950	10			5			
950 - 1000	9			1			1
1000 - 1050	3			1			
1050 - 1100	3			4			
1100 - 1150	6			2			
1150 - 1200	2			3		1	1
1200 - 1250	2						
1250 - 1300	1		1				
1300 - 1350	1						
1350 - 1400	1						
1400 - 1450	1						
1450 - 1500	1						
1500 - 1550							
1550 - 1600							
1600 - 1650	1						
1650 - 1700	1						
1700 - 1750							
1750 - 1800							
1800 - 1850							
1850 - 1900							
1900 - 1950							
1950 - 2000	1						
2000 - 2050							
2050 - 2100							
2100 - 2150	1						
2150 - 2200							
2200 - 2250	1						

TABLE 11
SIZES OF SCHOOLS

TABLE 12
BOARDING/DAY RATIOS

	NUMBER OF SCHOOLS						
	HMC	SHMIS	GBA	GSA	GBGSA	IAPS	ISAI
% BOARDERS							
0 - 5	78	7	4	123	6	236	223
5 - 10	15	5		11	1	32	4
10 - 15	13		3	9	1	28	8
15 - 20	5	2		8		27	5
20 - 25	7	2	2	7	2	39	2
25 - 30	7	1		3		18	4
30 - 35	4	1		7		23	3
35 - 40	5	1	2	11		20	2
40 - 45	9	5		2	1	10	2
45 - 50	8	1		6	1	11	4
50 - 55	3	4	1	7		9	3
55 - 60	8	1	1	4		6	2
60 - 65	2	3	1	6		8	2
65 - 70	5	1	1	10		14	
70 - 75	8	5		5		7	4
75 - 80	13		1	2		6	4
80 - 85	12	3		3		2	5
85 - 90	7			6		7	1
90 - 95	7	3	1	6		8	1
95 - 100	17	5		9		15	2

TABLE 13
BOY/GIRL RATIOS

	NUMBER OF SCHOOLS						
	HMC	SHMIS	GBA	GSA	GBGSA	IAPS	ISAI
% BOYS							
0 - 5			1	222	7	38	31
5 - 10				9	2	8	11
10 - 15				9		9	5
15 - 20				3		6	3
20 - 25				1		8	7
25 - 30						7	6
30 - 35						7	8
35 - 40	1	1		1	3	7	4
40 - 45	2	1				8	18
45 - 50	12	2	2			14	28
50 - 55	19	8	4			28	42
55 - 60	13	4	1			39	31
60 - 65	15	5	2			53	22
65 - 70	16	3				42	16
70 - 75	6	3	1			24	3
75 - 80	8	1	1			19	7
80 - 85	19	1				12	1
85 - 90	19	3				8	2
90 - 95	23	4	1			20	5
95 - 100	80	14	4			169	31

NOTES ON TABLES FOR INDIVIDUAL ASSOCIATIONS

Tables on the following pages show changes that occurred between January 1991 and January 1992.

In order that fair comparisons can be made, only those schools which completed the census in BOTH years have figures included in the tables.

A few schools changed the associations to which they belong during the year between the two census days. Their figures are included in tables for their current associations.

Age ranges for schools in England, Wales and Ireland are calculated using 1st September as a base. Those in Scotland use 1st January.

Tables 14A to 20A show numbers of pupils in the schools. Current numbers are shown in bold print, with last year's figures printed below. Percentage changes are printed as the third line of each group of three lines. In cases of large percentage change, it is wise to look at the figures above to see if the change is significant.

TABLES 14B to 20B show the numbers of pupils and the average fees by areas. A blank entry in a fees or numbers column indicates that there is no school of the relevant category in the area. A blank in the per cent change row means there is no significant change.

TABLES 14C, D and E to 20C, D and E deal with staffing.

TABLES 14F and G to 20F and G deal with numbers and courses of study of sixth form pupils.

TABLES 14H, I and J to 20H, I and J show the sources of entry and destination of leavers. Proportions shown in each category are believed to be accurate, but total numbers are higher than those shown. These tables are amongst the most difficult for schools to complete accurately as sources and destinations are not always known.

TABLE 14A - HMC
NUMBER OF PUPILS IN JANUARY 1992 AND CHANGES SINCE 1991

Figures for 1992 are printed in normal type, those for 1991 and per cent changes are printed in *italic type* below.

HMC AGE ON	BOYS			GIRLS			TOTAL
31 AUG 91	BOARDS FULL	WEEKLY	DAY	BOARDS FULL	WEEKLY	DAY	
2	0	0	6	0	0	5	11
	0	0	<i>18</i>	0	0	0	<i>18</i>
			<i>-66.7%</i>				<i>-38.9%</i>
3	0	0	53	0	0	28	81
	0	0	<i>23</i>	0	0	<i>1</i>	<i>24</i>
			<i>+130.4%</i>			<i>+2700.0%</i>	<i>+237.5%</i>
4	0	0	368	0	0	172	540
	0	0	335	0	0	138	473
			<i>+9.9%</i>			<i>+24.6%</i>	<i>+14.2%</i>
5	0	0	539	0	0	285	824
	0	0	504	0	0	246	750
			<i>+6.9%</i>			<i>+15.9%</i>	<i>+9.9%</i>
6	0	0	554	0	0	279	833
	0	0	591	0	0	291	882
			<i>-6.3%</i>			<i>-4.1%</i>	<i>-5.6%</i>
7	1	0	1,239	2	2	453	1,697
	<i>1</i>	<i>0</i>	<i>1,167</i>	<i>3</i>	<i>0</i>	<i>386</i>	<i>1,557</i>
			<i>+6.2%</i>	<i>-33.3%</i>		<i>+17.4%</i>	<i>+9.0%</i>
8	13	3	1,768	8	1	562	2,355
	<i>20</i>	<i>4</i>	<i>1,760</i>	<i>4</i>	<i>2</i>	<i>552</i>	<i>2,342</i>
	<i>-35.0%</i>	<i>-25.0%</i>	<i>+0.5%</i>	<i>+100.0%</i>	<i>-50.0%</i>	<i>+1.8%</i>	<i>+0.6%</i>
9	48	6	2,141	16	2	639	2,852
	<i>53</i>	<i>2</i>	<i>2,317</i>	<i>15</i>	<i>1</i>	<i>651</i>	<i>3,039</i>
	<i>-9.4%</i>	<i>+200.0%</i>	<i>-7.6%</i>	<i>+6.7%</i>	<i>+100.0%</i>	<i>-1.8%</i>	<i>-6.2%</i>
10	139	11	3,012	53	4	803	4,022
	<i>152</i>	<i>17</i>	<i>3,062</i>	<i>42</i>	<i>6</i>	<i>739</i>	<i>4,018</i>
	<i>-8.6%</i>	<i>-35.3%</i>	<i>-1.6%</i>	<i>+26.2%</i>	<i>-33.3%</i>	<i>+8.7%</i>	<i>+0.1%</i>
11	666	69	9,422	260	13	2,145	12,575
	<i>723</i>	<i>75</i>	<i>9,571</i>	<i>245</i>	<i>20</i>	<i>1,952</i>	<i>12,586</i>
	<i>-7.9%</i>	<i>-8.0%</i>	<i>-1.6%</i>	<i>+6.1%</i>	<i>-35.0%</i>	<i>+9.9%</i>	<i>-0.1%</i>
12	1,095	102	10,441	362	17	2,277	14,294
	<i>1,126</i>	<i>89</i>	<i>9,930</i>	<i>313</i>	<i>13</i>	<i>2,191</i>	<i>13,662</i>
	<i>-2.8%</i>	<i>+14.6%</i>	<i>+5.1%</i>	<i>+15.7%</i>	<i>+30.8%</i>	<i>+3.9%</i>	<i>+4.6%</i>
13	5,403	253	13,461	891	49	2,673	22,730
	<i>5,504</i>	<i>311</i>	<i>13,230</i>	<i>882</i>	<i>29</i>	<i>2,428</i>	<i>22,384</i>
	<i>-1.8%</i>	<i>-18.6%</i>	<i>+1.7%</i>	<i>+1.0%</i>	<i>+69.0%</i>	<i>+10.1%</i>	<i>+1.5%</i>
14	5,993	301	13,256	1,009	38	2,474	23,071
	<i>6,256</i>	<i>321</i>	<i>13,185</i>	<i>948</i>	<i>47</i>	<i>2,229</i>	<i>22,986</i>
	<i>-4.2%</i>	<i>-6.2%</i>	<i>+0.5%</i>	<i>+6.4%</i>	<i>-19.1%</i>	<i>+11.0%</i>	<i>+0.4%</i>
15	6,312	289	13,046	1,082	65	2,333	23,127
	<i>6,709</i>	<i>379</i>	<i>13,234</i>	<i>1,107</i>	<i>47</i>	<i>2,161</i>	<i>23,637</i>
	<i>-5.9%</i>	<i>-23.7%</i>	<i>-1.4%</i>	<i>-2.3%</i>	<i>+38.3%</i>	<i>+8.0%</i>	<i>-2.2%</i>
16	6,431	330	11,646	2,161	93	2,825	23,486
	<i>6,805</i>	<i>316</i>	<i>11,313</i>	<i>2,067</i>	<i>91</i>	<i>2,802</i>	<i>23,394</i>
	<i>-5.5%</i>	<i>+4.4%</i>	<i>+2.9%</i>	<i>+4.5%</i>	<i>+2.2%</i>	<i>+0.8%</i>	<i>+0.4%</i>
17	6,226	273	10,377	1,930	98	2,551	21,455
	<i>6,226</i>	<i>254</i>	<i>10,343</i>	<i>1,910</i>	<i>87</i>	<i>2,508</i>	<i>21,328</i>
		<i>+7.5%</i>	<i>+0.3%</i>	<i>+1.0%</i>	<i>+12.6%</i>	<i>+1.7%</i>	<i>+0.6%</i>
18	846	40	606	193	7	183	1,875
	<i>801</i>	<i>37</i>	<i>592</i>	<i>198</i>	<i>14</i>	<i>156</i>	<i>1,798</i>
	<i>+5.6%</i>	<i>+8.1%</i>	<i>+2.4%</i>	<i>-2.5%</i>	<i>-50.0%</i>	<i>+17.3%</i>	<i>+4.3%</i>
19	76	4	21	16	0	9	126
	<i>87</i>	<i>7</i>	<i>17</i>	<i>11</i>	<i>0</i>	<i>7</i>	<i>129</i>
	<i>-12.6%</i>	<i>-42.9%</i>	<i>+23.5%</i>	<i>+45.5%</i>		<i>+28.6%</i>	<i>-2.3%</i>
TOTAL	33,249	1,681	91,956	7,983	389	20,696	155,954
	<i>34,463</i>	<i>1,812</i>	<i>91,192</i>	<i>7,745</i>	<i>357</i>	<i>19,438</i>	<i>155,007</i>
	<i>-3.5%</i>	<i>-7.2%</i>	<i>+0.8%</i>	<i>+3.1%</i>	<i>+9.0%</i>	<i>+6.5%</i>	<i>+0.6%</i>

TABLE 14B - HMC NUMBERS AND FEES BY AREAS

ANALYSIS OF PUPIL NUMBERS AND AVERAGE TERMLY FEES
(PERCENT CHANGES ARE BASED ON 1991 FIGURES)

AREA	No. of Schools	BOYS			GIRLS			TOTAL			Boarding Fee	Weekly Boarding Fee	Day Fee Boarding Schools	Day Fee Day Schools	Day Fee Average	Average Fee
		Boarding Full	Weekly	Day	Boarding Full	Weekly	Day	Boarding Full	Weekly	Day						
Scotland	18	1993	6	8469	771	6	4644	2764	12	13113	£3088	£2249	£1164	£1107	£1134	£1482
		-2.1%	-25.0%	+1.9%	+2.9%	-25.0%	+9.3%	-0.8%	-25.0%	+4.4%	+10.9%	+13.3%	+11.6%	+12.0%	+11.8%	+11.5%
The North	45	3164	95	25429	811	54	4246	3975	149	29675	£3035	£2662	£1383	£1070	£1143	£1373
		-5.1%	-5.0%	-0.3%	-2.8%	+58.8%	+10.3%	-4.6%	+11.2%	+1.1%	+11.6%	+13.2%	+11.6%	+13.1%	+12.6%	+12.4%
Wales	4	685	17	622	147	69	832	832	17	691	£2413		£1613		£1613	£2055
		-3.5%		+3.0%	-3.9%		-5.5%	-3.6%		+2.1%	+12.5%		+16.8%		+16.8%	+14.0%
W Midlands	26	4190	136	8423	968	37	2637	5158	173	11060	£3223	£2288	£1637	£1061	£1334	£1940
		-4.1%	+40.2%	+1.1%	-2.0%	+2.8%	+3.0%	-3.7%	+30.1%	+1.6%	+11.5%	+14.1%	+13.1%	+7.5%	+10.7%	+11.2%
E Midlands	24	4718	381	8369	938	52	750	5656	433	9119	£3299	£2662	£1584	£1476	£1553	£2226
		-6.4%	+63.5%	-0.3%	+5.4%	+62.5%	+3.7%	-4.7%	+63.4%	+10.7%	+11.3%	+12.9%	+14.0%	+13.2%	+11.8%	+11.8%
East Anglia	15	1377	92	4581	558	56	1960	1935	148	6541	£3026	£2834	£1600	£1354	£1514	£1874
		-7.3%	-12.4%	-0.3%	+6.3%	+12.0%	+3.8%	-3.8%	-4.5%	+0.9%	+11.7%	+12.1%	+11.9%	+13.3%	+12.3%	+12.1%
South & West	28	5481	104	6759	1596	74	1739	7077	178	8498	£3167	£2823	£1478	£1249	£1389	£2189
		-4.7%	-11.1%	+0.9%	+6.8%	+10.4%	+8.3%	-2.3%	-3.3%	+2.3%	+9.5%	+12.1%	+10.8%	+8.0%	+9.8%	+9.7%
Greater London	23	1443	120	15068	70	867	1513	120	15935	£3512	£3311	£1881	£1494	£1621	£1782	
		+14.8%	-67.0%	+1.9%	+89.2%		+0.2%	+16.9%	-69.3%	+1.8%	+9.9%	+10.0%	+9.6%	+12.9%	+11.6%	+11.4%
South East	42	9808	700	8837	1946	107	1900	11754	807	10737	£3278	£2825	£1987	£1390	£1790	£2592
		-2.7%	-6.3%	+3.3%	+2.2%	+5.9%	+7.4%	-2.0%	-4.8%	+4.0%	+11.8%	+11.2%	+13.5%	+16.7%	+14.3%	+12.5%
Ireland	8	390	30	5399	178	3	1884	568	33	7283	£1653	£2151	£831	£667	£748	£819
		-0.3%	-26.8%	-0.2%	+4.7%	+50.0%	+1.4%	+1.2%	-23.3%	+0.2%	+8.7%	+10.1%	+9.1%	+5.9%	+7.5%	+7.8%
All	233	33249	1681	91956	7983	389	20696	41232	2070	112652	£3174	£2772	£1533	£1176	£1338	£1843
		-3.5%	-7.2%	+0.8%	+3.1%	+9.0%	+6.5%	-2.3%	-4.6%	+1.8%	+11.1%	+11.5%	+12.0%	+12.2%	+12.1%	+11.6%

(A new method of calculating average fees has been used this year.
The figures shown are now 'average fee per pupil', rather than 'average fee per school'.)

TABLES 14C, D, E, F, G - HMC STAFFING AND COURSES OF STUDY

TABLE 14C : Full Time Staff

	Graduates			Non-Graduates		TOTAL
	Maths	Science	Other	Qualified	Non-Qualified	
Men	1,242	2,474	6,539	598	53	10,906
Women	260	367	1,694	410	19	2,750

TABLE 14D : Part Time Staff

	Graduates		Non-Graduates		TOTAL
	Men	Women	Men	Women	
Number	369	818	121	348	1,656
Aggregate number of hours per week	3,925	9,318	1,235	3,421	17,899

STAFFING

TABLE 14E : Full Time Staff Changes

NUMBER	Coming from	Going to
Independent Schools	466	365
Maintained Schools	276	107
University, Polytechnic or Training College	301	63
Industry, etc.	71	52
Other (incl. Retirement)	120	494
TOTAL	1,234	1,081

TABLE 14F : Number of Sixth Form Pupils

Number of Pupils who have completed their GCSE or (in Scotland) their Standard Grades. Pupils who are re-taking some of these exams are included. Each first and second year sixth form pupil is included once.			
	Boys	Girls	TOTAL
Number on A-level or (in Scotland) Higher Grade or CSYS Courses.	35,310	9,954	45,264
NUMBER on CSE/GCSE/ Standard Grade re-take Courses.	846	20	866
Number on other Courses.	274	16	290
TOTAL	36,430	9,990	46,420

COURSES OF STUDY

TABLE 14G :

Sixth Form Pupils Analysed by Course of Study

Each Sixth form pupil is included once for each A-level or SCSYS course being studied (e.g. a pupil taking three A-level courses is counted three times.)

AS-level courses are counted at the rate 2 AS-level = 1 A-level and Scottish Higher Grade courses at the rate of 3 Highers = 2 A-levels.

	Boys	Girls	TOTAL
Arts	18,143	6,043	24,186
Classics	3,103	798	3,901
English	9,919	4,569	14,488
Mathematics	16,412	2,976	19,388
Modern Languages	9,688	4,584	14,272
Science/Technology	31,071	6,423	37,494
Social Science	22,020	5,193	27,213
TOTAL	110,356	30,586	140,942

TABLES 14H, I, J - HMC

SOURCES OF ENTRY, DESTINATIONS OF LEAVERS

TABLE 14H : Sources of Entry

		From Another School		From Overseas		Other	TOTAL
		Indep.	Maint.	Expatriate	Foreign		
BOYS	From Pre-Prep/Nursery/No School	375	215	4	7	506	1,107
	From Prep/Primary School	10,617	5,819	159	319	29	16,943
	From Senior School (Pre GCSE)	1,783	1,024	100	387	13	3,307
	From Senior School (Post GCSE)	507	539	71	591	10	1,718
GIRLS	From Pre-Prep/Nursery/No School	91	25	2	10	248	376
	From Prep/Primary School	1,648	1,382	64	57	26	3,177
	From Senior School (Pre GCSE)	557	416	42	105	4	1,124
	From Senior School (Post GCSE)	1,698	729	69	281	5	2,782
TOTAL		17,276	10,149	511	1,757	841	30,534

TABLE 14I : Destinations of leavers who have not sat A-level, SCSYS or Scottish Higher exams.

		To Another School			To Further Education	Employment	Other	TOTAL
		Indep.	L.E.A.	Overseas				
BOYS	Leaving at end of Pre-Prep	31	22	9	0	0	2	64
	Leaving at end of Prep	185	190	54	9	0	16	454
	Leaving immediately after GCSE	385	1,034	158	1,389	185	239	3,390
	Others	528	641	384	224	61	155	1,993
GIRLS	Leaving at end of Pre-Prep	19	7	2	2	0	0	30
	Leaving at end of Prep	48	53	34	7	4	7	153
	Leaving immediately after GCSE	121	174	31	243	25	55	649
	Others	159	116	105	55	10	29	474
TOTAL		1,476	2,237	777	1,929	285	503	7,207

TABLE 14J : Destinations of leavers who have sat A-level, SCSYS or Scottish Higher exams.

			Boys	Girls	TOTAL
Pupils who left to take Higher Education Courses in the U.K. or Overseas	Entrants to Universities, Including Deferred Entry	Arts	3,532	1,247	4,779
		Science	3,177	723	3,900
		Engineering/Technology	1,711	93	1,804
		Social Science	2,547	666	3,213
	Degree Courses at Polytechnic	Arts	633	261	894
		Science	363	101	464
		Engineering/Technology	526	26	552
		Social Science	1,060	310	1,370
	All other H.E. Courses	Arts	503	275	778
		Science	162	43	205
		Engineering/Technology	162	9	171
		Social Science	266	104	370
	Pupils who left to continue Secondary Education elsewhere	To another Indep. School	622	186	808
		To a Maintained School	642	156	798
Other Pupils who left	For Further Education or Training		429	199	628
	For Employment		619	122	741
	Others		743	205	948
	TOTAL		17,697	4,726	22,423

TABLE 15A - SHMIS

NUMBER OF PUPILS IN JANUARY 1992 AND CHANGES SINCE 1991

Figures for 1992 are printed in normal type, those for 1991 and per cent changes are printed in *italic type* below.

SHMIS AGE ON	BOYS			GIRLS			TOTAL
	BOARDERS FULL	BOARDERS WEEKLY	DAY	BOARDERS FULL	BOARDERS WEEKLY	DAY	
31 AUG 91							
2	0	0	4	0	0	2	6
	0	0	<i>-55.6%</i>	0	0	2	<i>11</i>
3	0	0	40	0	0	38	78
	0	0	39	0	0	27	66
4	0	0	<i>+2.6%</i>	0	0	<i>+40.7%</i>	<i>+18.2%</i>
	0	0	68	0	0	70	138
	0	0	62	0	0	56	118
5	0	0	<i>+9.7%</i>	0	0	<i>+25.0%</i>	<i>+16.9%</i>
	0	0	83	0	0	72	155
	0	0	77	0	0	42	119
6	1	0	<i>+7.8%</i>	0	0	<i>+71.4%</i>	<i>+30.3%</i>
	1	0	99	0	0	72	172
	1	0	72	1	0	49	123
7	4	1	<i>+37.5%</i>	<i>-100.0%</i>	5	<i>+46.9%</i>	<i>+39.8%</i>
	149	5	149	5	1	89	249
	7	0	120	0	1	67	195
	<i>-42.9%</i>		<i>+24.2%</i>			<i>+32.8%</i>	<i>+27.7%</i>
8	9	0	167	1	3	108	288
	7	3	130	10	0	70	220
	<i>+28.6%</i>	<i>-100.0%</i>	<i>-28.5%</i>	<i>-90.0%</i>		<i>+54.3%</i>	<i>+30.9%</i>
9	20	0	218	14	3	105	360
	34	7	177	8	4	89	319
	<i>-41.2%</i>	<i>-100.0%</i>	<i>+23.2%</i>	<i>+75.0%</i>	<i>-25.0%</i>	<i>+18.0%</i>	<i>+12.9%</i>
10	63	9	252	12	5	147	488
	78	19	276	19	10	88	490
	<i>-19.2%</i>	<i>-52.6%</i>	<i>-8.7%</i>	<i>-36.8%</i>	<i>-50.0%</i>	<i>+67.0%</i>	<i>-0.4%</i>
11	261	37	835	73	21	396	1,623
	281	47	837	58	11	331	1,565
	<i>-7.1%</i>	<i>-21.3%</i>	<i>-0.2%</i>	<i>+25.9%</i>	<i>+90.9%</i>	<i>+19.6%</i>	<i>+3.7%</i>
12	378	47	930	116	10	429	1,910
	378	60	818	107	14	314	1,691
	<i>-21.7%</i>	<i>+13.7%</i>	<i>+8.4%</i>	<i>-28.6%</i>		<i>+36.6%</i>	<i>+13.0%</i>
13	753	68	1,022	180	20	410	2,453
	814	63	1,002	159	20	410	2,468
	<i>-7.5%</i>	<i>+7.9%</i>	<i>+2.0%</i>	<i>+13.2%</i>			<i>-0.6%</i>
14	870	75	991	189	22	414	2,561
	906	81	1,008	200	24	380	2,599
	<i>-4.0%</i>	<i>-7.4%</i>	<i>-1.7%</i>	<i>-5.5%</i>	<i>-8.3%</i>	<i>+8.9%</i>	<i>-1.5%</i>
15	929	87	977	226	25	378	2,622
	1,071	90	991	224	18	316	2,710
	<i>-13.3%</i>	<i>-3.3%</i>	<i>-1.4%</i>	<i>+0.9%</i>	<i>+38.9%</i>	<i>+19.6%</i>	<i>-3.2%</i>
16	795	46	620	231	11	236	1,939
	840	60	659	181	17	282	2,039
	<i>-5.4%</i>	<i>-23.3%</i>	<i>-5.9%</i>	<i>+27.6%</i>	<i>-35.3%</i>	<i>-16.3%</i>	<i>-4.9%</i>
17	628	38	546	159	12	235	1,618
	666	26	460	152	15	213	1,532
	<i>-5.7%</i>	<i>+46.2%</i>	<i>+18.7%</i>	<i>+4.6%</i>	<i>-20.0%</i>	<i>+10.3%</i>	<i>+5.6%</i>
18	152	15	60	31	3	31	292
	146	9	46	28	0	23	252
	<i>+4.1%</i>	<i>+66.7%</i>	<i>+30.4%</i>	<i>+10.7%</i>		<i>+34.8%</i>	<i>+15.9%</i>
19	21	1	5	5	0	2	34
	26	0	3	3	0	0	32
	<i>-19.2%</i>		<i>+66.7%</i>	<i>+66.7%</i>			<i>+6.2%</i>
TOTAL	4,884	424	7,066	1,242	136	3,234	16,986
	5,255	465	6,786	1,150	134	2,759	16,549
	<i>-7.1%</i>	<i>-8.8%</i>	<i>+4.1%</i>	<i>+8.0%</i>	<i>+1.5%</i>	<i>+17.2%</i>	<i>+2.6%</i>

TABLE 15B - SHMIS NUMBERS AND FEES BY AREAS

ANALYSIS OF PUPIL NUMBERS AND AVERAGE TERMLY FEES
(PERCENT CHANGES ARE BASED ON 1991 FIGURES)

AREA	No. of Schools	BOYS			GIRLS			TOTAL			Boarding Fee	Weekly Boarding Fee	Day Fee Boarding Schools	Day Fee Day Schools	Day Fee Average	Average Fee
		Boarding Full	Weekly	Day	Boarding Full	Weekly	Day	Boarding Full	Weekly	Day						
Scotland	2	329		62	86		38	415		100	£2696		£1408		£1408	£2462
		+0.3%		-10.1%	+16.2%		+40.7%	+3.2%		+4.2%	+5.0%		+11.9%		+11.9%	+5.7%
The North	8	291	24	2059	144	18	1019	435	42	3078	£2296	£2187	£1240	£1205	£1230	£1384
		-13.4%	-4.0%	+7.6%	-12.7%	+20.0%	+13.7%	-13.2%	+5.0%	+9.5%	+12.0%	+13.7%	+14.2%	+19.1%	+15.5%	+14.8%
Wales	3	224	28	428	1		278	225	28	706	£2576	£2125	£1652	£1192	£1292	£1615
		+6.2%	-34.9%	+0.2%			+9.0%	+6.6%	-34.9%	+3.5%	+6.6%	+9.8%	+6.8%	+1.9%	+3.2%	+4.7%
W Midlands	6	403	33	827	169	36	431	572	69	1258	£2517	£2162	£1534	£1133	£1441	£1788
		-13.7%	-15.4%	-1.3%	+4.3%	-2.7%	-3.6%	-9.1%	-9.2%	-2.1%	+10.8%	+14.0%	+15.0%	+11.0%	+14.3%	+12.8%
E Midlands	4	632	33	177	83		26	715	33	203	£3313	£3222	£2155		£2155	£3085
		-9.3%	-13.2%	+0.6%	+9.2%		+8.3%	-7.5%	-13.2%	+1.5%	+9.5%	+12.0%	+10.6%		+10.6%	+9.8%
East Anglia	2	590		78	130		79	720		157	£2175		£1790		£1790	£2107
		-9.0%		+27.9%	+91.2%		+1.3%	+0.6%		+12.9%	+10.6%		+12.0%		+12.0%	+10.8%
South & West	6	961		469	271		188	1232		657	£2787		£1532		£1532	£2382
		-7.7%		+1.7%	-1.1%		+38.2%	-6.3%		+10.1%	+10.8%		+12.3%		+12.3%	+11.2%
Greater London	3	95	34	545	106	13	102	201	47	647	£3657	£2740	£1707	£1252	£1493	£2008
		+11.8%	+9.7%	-0.7%	+10.4%	-23.5%	-14.3%	+11.0%	-2.1%	-3.1%	+24.4%	+14.6%	+20.4%	+20.4%	+20.4%	+21.5%
South East	13	1338	266	2148	239	68	744	1577	334	2892	£2807	£2596	£1517	£1295	£1485	£2061
		-5.7%	-4.0%	+6.8%	+6.2%	+7.9%	+64.2%	-4.1%	-1.8%	+17.3%	+11.5%	+9.9%	+10.2%	+9.3%	+10.1%	+10.8%
Ireland	1	21	6	273	13	1	329	34	7	602	£1604	£1604	£843		£843	£888
		-8.7%	-25.0%	-2.2%	+30.0%	-50.0%	+1.5%	+3.0%	-30.0%	-0.2%	+10.1%	+10.1%	+11.5%		+11.5%	+11.4%
All	48	4884	424	7066	1242	136	3234	6126	560	10300	£2733	£2522	£1416	£1212	£1366	£1922
		-7.1%	-8.8%	+4.1%	+8.0%	+1.5%	+17.2%	-4.4%	-6.5%	+7.9%	+10.8%	+11.2%	+12.6%	+12.4%	+12.6%	+11.5%

(A new method of calculating average fees has been used this year.
The figures shown are now 'average fee per pupil', rather than 'average fee per school'.)

TABLES 15C, D, E, F, G - SHMIS STAFFING AND COURSES OF STUDY

TABLE 15C : Full Time Staff

	Graduates			Non-Graduates		TOTAL
	Maths	Science	Other	Qualified	Non-Qualified	
Men	116	265	643	146	16	1,186
Women	28	58	255	136	16	493

TABLE 15D : Part Time Staff

	Graduates		Non-Graduates		TOTAL
	Men	Women	Men	Women	
Number	62	163	30	95	350
Aggregate number of hours per week	853	1,909	338	1,281	4,381

STAFFING

TABLE 15E : Full Time Staff Changes

NUMBER	Coming from	Going to
Independent Schools	53	48
Maintained Schools	46	24
University, Polytechnic or Training College	39	5
Industry, etc.	8	10
Other (incl. Retirement)	26	84
TOTAL	172	171

TABLE 15F : Number of Sixth Form Pupils

Number of Pupils who have completed their GCSE or (in Scotland) their Standard Grades. Pupils who are re-taking some of these exams are included. Each first and second year sixth form pupil is included once.			
	Boys	Girls	TOTAL
Number on A-level or (in Scotland) Higher Grade or CSYS Courses.	2,549	886	3,435
NUMBER on CSE/GCSE/Standard Grade re-take Courses.	172	31	203
Number on other Courses.	118	48	166
TOTAL	2,839	965	3,804

COURSES OF STUDY

TABLE 15G :

Sixth Form Pupils Analysed by Course of Study

Each Sixth form pupil is included once for each A-level of SCYS course being studied (e.g. a pupil taking three A-level courses is counted three times.) AS-level courses are counted at the rate of 2 AS-level = 1 A-level and Scottish Higher Grade courses at the rate of 3 Highers = 2 A-levels.			
	Boys	Girls	TOTAL
Arts	1,120	605	1,725
Classics	50	25	75
English	630	356	986
Mathematics	1,010	218	1,228
Modern Languages	421	286	707
Science/Technology	2,220	541	2,761
Social Science	1,604	412	2,016
TOTAL	7,055	2,443	9,498

TABLES 15H, I, J - SHMIS

SOURCES OF ENTRY, DESTINATIONS OF LEAVERS

TABLE 15H : Sources of Entry

		From Another School		From Overseas		Other	TOTAL
		Indep.	Maint.	Expatriate	Foreign		
BOYS	From Pre-Prep/Nursery/No School	43	56	0	4	43	146
	From Prep/Primary School	973	709	55	73	7	1,817
	From Senior School (Pre GCSE)	197	171	20	142	3	533
	From Senior School (Post GCSE)	64	50	16	69	0	199
GIRLS	From Pre-Prep/Nursery/No School	14	15	1	0	39	69
	From Prep/Primary School	274	319	10	19	8	630
	From Senior School (Pre GCSE)	126	86	11	58	0	281
	From Senior School (Post GCSE)	88	57	4	46	0	195
TOTAL		1,779	1,463	117	411	100	3,870

TABLE 15I : Destinations of leavers who have not sat A-level, SCSYS or Scottish Higher exams.

		To Another School			To Further Education	Employment	Other	TOTAL
		Indep.	L.E.A.	Overseas				
BOYS	Leaving at end of Pre-Prep	1	7	2	0	0	2	12
	Leaving at end of Prep	32	59	25	9	1	9	135
	Leaving immediately after GCSE	45	213	56	521	114	83	1,032
	Others	102	215	93	33	18	42	503
GIRLS	Leaving at end of Pre-Prep	4	6	4	0	0	3	17
	Leaving at end of Prep	11	26	13	0	0	5	55
	Leaving immediately after GCSE	32	58	26	131	10	23	280
	Others	40	61	49	21	3	7	181
TOTAL		267	645	268	715	146	174	2,215

TABLE 15J : Destinations of leavers who have sat A-level, SCSYS or Scottish Higher exams.

			Boys	Girls	TOTAL
Pupils who left to take Higher Education Courses in the U.K. or Overseas	Entrants to Universities, Including Deferred Entry	Arts	145	68	213
		Science	139	48	187
		Engineering/Technology	108	5	113
		Social Science	81	18	99
	Degree Courses at Polytechnic	Arts	53	30	83
		Science	48	11	59
		Engineering/Technology	55	2	57
		Social Science	89	23	112
	All other H.E. Courses	Arts	74	42	116
		Science	31	7	38
		Engineering/Technology	18	0	18
		Social Science	37	15	52
Pupils who left to continue Secondary Education elsewhere		To another Indep. School	45	12	57
		To a Maintained School	60	20	80
Other Pupils who left	For Further Education or Training		116	40	156
	For Employment		123	25	148
	Others		122	22	144
TOTAL			1,344	388	1,732

TABLE 16A - GBA
NUMBER OF PUPILS IN JANUARY 1992 AND CHANGES SINCE 1991

Figures for 1992 are printed in normal type, those for 1991 and per cent changes are printed in *italic type* below.

GBA AGE ON 31 AUG 91	BOYS		GIRLS		TOTAL
	BOARDERS FULL	WEEKLY	BOARDERS FULL	WEEKLY	
		DAY		DAY	
2	0	6	0	0	12
	0	7	0	0	15
		-14.3%		-25.0%	-20.0%
3	0	18	0	0	16
	0	29	0	0	34
		-37.9%		+300.0%	+3.0%
4	0	45	0	0	71
	0	41	0	0	30
		+9.8%		-13.3%	
5	0	63	0	0	92
	0	53	0	0	77
		+18.9%		+20.8%	+19.5%
6	0	60	0	0	89
	0	64	1	0	94
		-6.2%	-100.0%		
7	0	80	0	0	114
	1	95	1	0	37
		-15.8%	-100.0%	-8.1%	-14.9%
8	6	121	4	0	54
	3	109	0	0	49
		+11.0%		+10.2%	+16.1%
9	8	120	1	1	60
	7	161	9	1	61
		-25.5%	-88.9%	-1.6%	-20.5%
10	27	159	13	2	78
	34	268	10	4	92
		-5.4%	+30.0%	-15.2%	-9.7%
11	61	433	28	6	183
	74	381	31	2	206
		-17.6%	-9.7%	+200.0%	-11.2%
12	95	420	39	5	208
	111	450	58	8	211
		-14.4%	-32.8%	-1.4%	-8.1%
13	243	512	120	8	238
	289	492	130	1	261
		-15.9%	-7.7%	+700.0%	-8.8%
14	305	494	124	3	259
	341	484	118	2	226
		-10.6%	+5.1%	+50.0%	+14.6%
15	337	474	125	3	223
	344	496	135	7	223
		-2.0%	-7.4%	-57.1%	-3.0%
16	289	325	147	4	198
	316	306	205	4	198
		-8.5%	-28.3%		-6.0%
17	249	247	162	4	172
	240	278	146	1	165
		+3.8%	+11.0%	+300.0%	+4.2%
18	68	38	47	0	29
	58	16	22	0	11
		+17.2%	+137.5%	+163.6%	+71.3%
19	21	9	18	0	9
	6	1	0	0	8
		+250.0%	+800.0%	+800.0%	+612.5%
TOTAL	1,709	86	828	36	1,851
	1,824	79	866	30	1,836
		+6.3%	-4.4%	+20.0%	+0.8%
		+8.9%			-1.6%

TABLE 16B - GBA NUMBERS AND FEES BY AREAS

ANALYSIS OF PUPIL NUMBERS AND AVERAGE TERMLY FEES
(PERCENT CHANGES ARE BASED ON 1991 FIGURES)

AREA	No. of Schools	BOYS			GIRLS			TOTAL			Boarding	Weekly	Day Fee	Day Fee	Day Fee	Average Fee
		Boarding		Day	Boarding		Day	Boarding		Day	Fee	Boarding Fee	Boarding Fee	Schools	Schools	
		Full	Weekly		Full	Weekly		Full	Weekly							
Scotland	2	86	1	234	43		234	129	1	468	£2558	£2370	£1182		£1182	£1450
		+6.2%	-85.7%	-4.5%	+38.7%		-5.6%	+15.2%	-92.3%	-5.1%	+14.6%	+18.5%	+13.4%		+13.4%	+13.9%
The North	1	19	8	108	7	1	88	26	9	196	£2555	£2250	£1185		£1185	£1345
		+11.8%	+166.7%	+16.1%	+75.0%	-50.0%	-4.3%	+23.8%	+80.0%	+5.9%	+12.0%	+12.0%	+12.0%		+12.0%	+12.0%
Wales	1	93	15	62	28	5	30	121	20	92	£2906	£2702	£1558		£1558	£2347
		-19.1%	+15.4%	-1.6%	-22.2%	+400.0%	-11.8%	-19.9%	+42.9%	-5.2%	+15.0%	+15.0%	+15.0%		+15.0%	+15.0%
E Midlands	2	213	35	255	173	19	163	386	54	418	£2849	£2617	£1634		£1634	£2273
		-13.4%		+9.9%	-6.0%	+26.7%	+14.8%	-10.2%	+8.0%	+11.8%	+11.9%	+12.5%	+11.8%		+11.8%	+12.0%
East Anglia	3	206	24	713	7	11	205	213	35	918	£2277	£2195	£1416	£1217	£1352	£1544
		-12.0%	+14.3%	-3.3%		+83.3%	+0.5%	-11.6%	+29.6%	-2.4%	+12.8%	-7.2%	+25.1%	+7.9%	+19.5%	+16.5%
South & West	3	734		1071	423		409	1157		1480	£3366		£1144		£1144	£2139
		-1.7%		+1.2%	-7.8%		+3.8%	-4.1%		+1.9%	+14.3%		+12.4%		+12.4%	+13.7%
Greater London	2			237			580			817				£1660	£1660	£1660
				-4.0%						-1.2%				+12.9%	+12.9%	+12.9%
South East	2	174	3	783			5	174	3	788	£2175		£1049		£1049	£1256
		-8.4%		-1.5%			-37.5%	-8.4%		-1.9%	+12.7%		+13.4%		+13.4%	+13.3%
Ireland	1	184		161	147		137	331		298	£1217		£660		£660	£953
		-5.2%			+1.4%		+2.2%	-2.4%		+1.0%	+5.0%		+26.4%		+26.4%	+11.2%
All	17	1709	86	3624	828	36	1851	2537	122	5475	£2766	£2492	£1191	£1542	£1263	£1754
		-6.3%	+8.9%	-0.2%	-4.4%	+20.0%	+0.8%	-5.7%	+11.9%	+0.1%	+13.2%	+7.3%	+15.2%	+11.8%	+14.3%	+13.6%

(A new method of calculating average fees has been used this year.
The figures shown are now 'average fee per pupil', rather than 'average fee per school'.)

TABLES 16C, D, E, F, G - GBA STAFFING AND COURSES OF STUDY

TABLE 16C : Full Time Staff

	Graduates			Non-Graduates		TOTAL
	Maths	Science	Other	Qualified	Non-Qualified	
Men	49	118	282	77	6	532
Women	19	30	166	45	9	269

TABLE 16D : Part Time Staff

	Graduates		Non-Graduates		TOTAL
	Men	Women	Men	Women	
Number	27	51	18	35	131
Aggregate number of hours per week	221	633	166	389	1,409

STAFFING

TABLE 16E : Full Time Staff Changes

NUMBER	Coming from	Going to
Independent Schools	20	13
Maintained Schools	13	8
University, Polytechnic or Training College	19	3
Industry, etc.	4	1
Other (incl. Retirement)	14	27
TOTAL	70	52

TABLE 16F : Number of Sixth Form Pupils

Number of Pupils who have completed their GCSE or (in Scotland) their Standard Grades. Pupils who are re-taking some of these exams are included. Each first and second year sixth form pupil is included once.			
	Boys	Girls	TOTAL
Number on A-level or (in Scotland) Higher Grade or CSYS Courses.	965	603	1,568
NUMBER on CSE/GCSE/Standard Grade re-take Courses.	172	21	193
Number on other Courses.	2	1	3
TOTAL	1,139	625	1,764

COURSES OF STUDY

TABLE 16G :

Sixth Form Pupils Analysed by Course of Study

Each Sixth form pupil is included once for each A-level of SCYS course being studied (e.g. a pupil taking three A-level courses is counted three times.)

AS-level courses are counted at the rate 2 AS-level = 1 A-level and Scottish Higher Grade courses at the rate of 3 Highers = 2 A-levels.

	Boys	Girls	TOTAL
Arts	279	310	589
Classics	27	21	48
English	211	249	460
Mathematics	485	219	704
Modern Languages	190	236	426
Science/Technology	891	344	1,235
Social Science	784	407	1,191
TOTAL	2,867	1,786	4,653

TABLES 16H, I, J - GBA

SOURCES OF ENTRY, DESTINATIONS OF LEAVERS

TABLE 16H : Sources of Entry

		From Another School		From Overseas		Other	TOTAL
		Indep.	Maint.	Expatriate	Foreign		
BOYS	From Pre-Prep/Nursery/No School	23	17	0	0	47	87
	From Prep/Primary School	401	244	9	44	3	701
	From Senior School (Pre GCSE)	90	62	16	46	1	215
	From Senior School (Post GCSE)	25	30	8	45	0	108
GIRLS	From Pre-Prep/Nursery/No School	3	1	0	0	32	36
	From Prep/Primary School	119	128	9	9	2	267
	From Senior School (Pre GCSE)	53	33	9	22	0	117
	From Senior School (Post GCSE)	70	41	3	10	0	124
TOTAL		784	556	54	176	85	1,655

TABLE 16I : Destinations of leavers who have not sat A-level, SCSYS or Scottish Higher exams.

		To Another School			To Further Education	Employment	Other	TOTAL
		Indep.	L.E.A.	Overseas				
BOYS	Leaving at end of Pre-Prep	5	7	1	0	0	4	17
	Leaving at end of Prep	9	20	13	0	0	9	51
	Leaving immediately after GCSE	18	31	14	83	26	46	218
	Others	21	32	31	74	8	66	232
GIRLS	Leaving at end of Pre-Prep	3	6	1	0	0	1	11
	Leaving at end of Prep	6	14	8	0	0	14	42
	Leaving immediately after GCSE	24	33	5	56	8	17	143
	Others	16	21	6	12	3	29	87
TOTAL		102	164	79	225	45	186	801

TABLE 16J : Destinations of leavers who have sat A-level, SCSYS or Scottish Higher exams.

			Boys	Girls	TOTAL
Pupils who left to take Higher Education Courses in the U.K. or Overseas	Entrants to Universities, Including Deferred Entry	Arts	27	43	70
		Science	61	43	104
		Engineering/Technology	37	8	45
		Social Science	58	45	103
	Degree Courses at Polytechnic	Arts	11	8	19
		Science	16	6	22
		Engineering/Technology	16	1	17
		Social Science	47	14	61
	All other H.E. Courses	Arts	25	25	50
		Science	11	3	14
		Engineering/Technology	9	1	10
		Social Science	8	6	14
Pupils who left to continue Secondary Education elsewhere		To another Indep. School	21	19	40
		To a Maintained School	23	8	31
Other Pupils who left	For Further Education or Training		22	14	36
	For Employment		36	13	49
	Others		47	16	63
TOTAL			475	273	748

TABLE 17A - GSA
NUMBER OF PUPILS IN JANUARY 1992 AND CHANGES SINCE 1991

Figures for 1992 are printed in normal type, those for 1991 and per cent changes are printed in *italic type* below.

GSA AGE ON	BOYS			GIRLS			TOTAL
	AGE	BOARDS FULL	DAY WEEKLY	BOARDS FULL	DAY WEEKLY	DAY	
31							
AUG							
91							
2		0	0	0	0	237	362
		0	0	0	0	209	298
			<i>+40.4%</i>			<i>+21.5%</i>	<i>+13.4%</i>
3		0	0	0	0	885	1,165
		0	0	0	0	863	1,151
			<i>-2.8%</i>			<i>+2.5%</i>	<i>+1.2%</i>
4		0	0	0	0	1,918	2,321
		1	0	0	0	1,947	2,321
			<i>+8.0%</i>			<i>-1.5%</i>	
5		2	0	0	1	2,367	2,703
		0	0	1	0	2,315	2,652
			<i>-0.9%</i>			<i>+2.2%</i>	<i>+1.9%</i>
6		0	0	4	0	2,414	2,712
		0	0	3	2	2,458	2,731
			<i>+9.7%</i>			<i>-1.8%</i>	<i>-0.7%</i>
7		1	0	15	6	3,384	3,568
		2	0	16	6	3,337	3,513
			<i>+6.6%</i>			<i>+1.4%</i>	<i>+1.6%</i>
8		1	0	52	23	3,830	3,956
		3	1	65	25	3,855	4,000
			<i>-2.0%</i>			<i>-8.0%</i>	<i>-0.6%</i>
9		0	3	141	40	4,379	4,591
		6	1	177	39	4,563	4,828
			<i>-33.3%</i>			<i>+2.6%</i>	<i>-4.0%</i>
10		4	0	345	65	5,109	5,559
		4	3	348	98	5,183	5,680
			<i>-10.0%</i>			<i>-33.7%</i>	<i>-1.4%</i>
11		3	0	1,488	311	10,753	12,569
		4	1	1,647	361	10,820	12,841
			<i>-25.0%</i>			<i>-13.9%</i>	<i>-0.6%</i>
12		3	0	2,110	381	10,987	13,488
		1	0	2,131	398	10,758	13,289
			<i>+60.0%</i>			<i>-4.3%</i>	<i>+2.1%</i>
13		2	0	2,491	431	10,845	13,772
		5	0	2,590	409	10,505	13,511
			<i>+50.0%</i>			<i>+5.4%</i>	<i>+3.2%</i>
14		1	1	2,685	430	10,419	13,539
		1	1	2,842	450	10,487	13,783
			<i>+50.0%</i>			<i>-4.4%</i>	<i>-0.6%</i>
15		1	1	2,865	482	10,317	13,675
		3	1	3,092	503	10,283	13,883
			<i>+800.0%</i>			<i>-4.2%</i>	<i>+0.3%</i>
16		1	0	2,564	369	7,170	10,110
		0	0	2,694	350	7,216	10,277
			<i>-64.7%</i>			<i>+5.4%</i>	<i>-0.6%</i>
17		0	0	2,228	314	6,460	9,020
		0	0	2,290	302	6,126	8,727
			<i>+100.0%</i>			<i>+4.0%</i>	<i>+5.5%</i>
18		0	0	366	30	254	651
		1	0	346	29	266	646
			<i>-75.0%</i>			<i>+3.4%</i>	<i>-4.5%</i>
19		0	0	59	0	11	70
		0	0	55	1	12	68
			<i>+7.3%</i>			<i>-100.0%</i>	<i>-8.3%</i>
TOTAL		19	5	17,413	2,883	91,739	113,831
		31	8	1,687	18,297	2,973	91,203
			<i>-38.7%</i>		<i>-4.8%</i>	<i>+0.6%</i>	<i>-0.3%</i>

TABLE 17B - GSA NUMBERS AND FEES BY AREAS

ANALYSIS OF PUPIL NUMBERS AND AVERAGE TERMLY FEES
(PERCENT CHANGES ARE BASED ON 1991 FIGURES)

AREA	No. of Schools	BOYS			GIRLS			TOTAL			Boarding Fee	Weekly Boarding Fee	Day Fee Boarding Schools	Day Fee Day Schools	Day Fee Average	Average Fee
		Boarding	Weekly	Day	Boarding	Weekly	Day	Boarding	Weekly	Day						
Scotland	11			63	792	81	3885	792	81	3948	£2768	£2539	£1240	£1060	£1185	£1467
				+34.0%	+0.3%	+11.0%	+0.3%	+0.3%	+11.0%	+0.7%	+12.3%	+12.1%	+14.4%	+11.0%	+13.4%	+13.1%
The North	38			613	1528	118	18859	1528	118	19472	£2646	£2347	£1374	£1083	£1106	£1219
				+2.9%	+1.2%	-22.4%	+0.7%	+1.2%	-22.4%	+0.8%	+10.4%	+11.0%	+10.7%	+14.6%	+14.3%	+13.6%
Wales	4			369	125		1416	369	125	1416	£2631	£2199	£1348		£1348	£1647
				-24.4%	+38.9%		-3.9%	-24.4%	+38.9%	-6.7%	+12.1%	+9.1%	+10.3%		+10.3%	+10.8%
W Midlands	25			162	2363	209	7588	2363	209	7750	£3087	£2624	£1451	£1168	£1250	£1700
				+7.3%	-6.1%	-12.9%	-0.9%	-6.1%	-12.9%	-0.8%	+11.5%	+12.8%	+13.4%	+13.5%	+13.4%	+12.6%
E Midlands	31			127	2573	691	12327	2573	691	12454	£2808	£2290	£1294	£1132	£1202	£1515
				+8.5%	-3.6%	-12.1%	+0.6%	-3.6%	-12.1%	+0.7%	+11.1%	+12.7%	+13.7%	+9.1%	+11.2%	+11.3%
East Anglia	12			144	801	179	4520	801	179	4664	£2795	£2112	£1330	£1076	£1147	£1408
				+23.1%	-17.0%	+27.9%	+0.4%	-17.0%	+27.9%	+1.0%	+10.5%	+15.3%	+12.1%	+14.8%	+13.9%	+13.0%
South & West	27	3	2	246	3014	436	7912	3017	438	8158	£2745	£2168	£1337	£998	£1203	£1643
		-25.0%	-50.0%	+7.0%	-1.9%	-7.6%	+2.4%	-1.9%	-8.0%	+2.6%	+12.1%	+11.3%	+13.6%	+11.0%	+12.7%	+12.4%
Greater London	31			130	68	37	18481	68	37	18611	£2464	£2532	£1577	£1328	£1357	£1363
				+13.0%	-19.0%	+19.4%	+1.4%	-19.0%	+19.4%	+1.5%	+13.5%	+23.6%	+20.6%	+16.7%	+17.3%	+17.3%
South East	64	16	3	287	5905	1007	16751	5921	1010	17038	£3046	£2683	£1557	£1213	£1363	£1831
		-40.7%	-25.0%	+6.3%	-4.8%	+1.8%	-0.1%	-5.0%	+1.7%	-0.0%	+11.7%	+11.9%	+11.9%	+12.8%	+12.4%	+12.1%
All	243	19	5	1772	17413	2883	91739	17432	2888	93511	£2895	£2436	£1405	£1173	£1245	£1526
		-38.7%	-37.5%	+5.0%	-4.8%	-3.0%	+0.6%	-4.9%	-3.1%	+0.7%	+11.5%	+12.3%	+13.4%	+14.0%	+13.8%	+13.1%

(A new method of calculating average fees has been used this year.
The figures shown are now 'average fee per pupil', rather than 'average fee per school'.)

TABLES 17C, D, E, F, G - GSA STAFFING AND COURSES OF STUDY

TABLE 17C : Full Time Staff

	Graduates			Non-Graduates		TOTAL
	Maths	Science	Other	Qualified	Non-Qualified	
Men	124	344	664	77	5	1,214
Women	686	1,027	4,409	1,550	66	7,738

TABLE 17D : Part Time Staff

	Graduates		Non-Graduates		TOTAL
	Men	Women	Men	Women	
Number	276	2,371	72	923	3,642
Aggregate number of hours per week	4,109	28,591	877	10,692	44,269

STAFFING

TABLE 17E : Full Time Staff Changes

NUMBER	Coming from	Going to
Independent Schools	362	246
Maintained Schools	347	148
University, Polytechnic or Training College	125	42
Industry, etc.	30	27
Other (incl. Retirement)	155	565
TOTAL	1,019	1,028

TABLE 17F : Number of Sixth Form Pupils

Number of Pupils who have completed their GCSE or (in Scotland) their Standard Grades. Pupils who are re-taking some of these exams are included. Each first and second year sixth form pupil is included once.			
	Boys	Girls	TOTAL
Number on A-level or (in Scotland) Higher Grade or CSYS Courses.	23	19,321	19,344
NUMBER on CSE/GCSE/Standard Grade re-take Courses.	0	500	500
Number on other Courses.	0	152	152
TOTAL	23	19,973	19,996

COURSES OF STUDY

TABLE 17G :

Sixth Form Pupils Analysed by Course of Study

Each Sixth form pupil is included once for each A-level of SCSEY3 course being studied (e.g. a pupil taking three A-level courses is counted three times.)			
AS-level courses are counted at the rate 2 AS-level = 1 A-level and Scottish Higher Grade courses at the rate of 3 Highers = 2 A-levels.			
	Boys	Girls	TOTAL
Arts	47	11,722	11,769
Classics	24	2,481	2,505
English	50	7,123	7,173
Mathematics	55	6,475	6,530
Modern Languages	47	12,662	12,709
Science/Technology	8,605	13,178	21,783
Social Science	381	8,314	8,695
TOTAL	9,209	61,955	71,164

TABLES 17H, I, J - GSA

SOURCES OF ENTRY, DESTINATIONS OF LEAVERS

TABLE 17H : Sources of Entry

		From Another School		From Overseas		Other	TOTAL
		Indep.	Maint.	Expatriate	Foreign		
BOYS	From Pre-Prep/Nursery/No School	68	18	2	2	491	581
	From Prep/Primary School	37	37	2	4	4	84
	From Senior School (Pre GCSE)	12	2	0	3	0	17
	From Senior School (Post GCSE)	31	2	0	1	16	50
GIRLS	From Pre-Prep/Nursery/No School	877	595	11	25	1,856	3,364
	From Prep/Primary School	6,086	4,370	230	296	247	11,229
	From Senior School (Pre GCSE)	1,702	999	89	591	22	3,403
	From Senior School (Post GCSE)	593	291	28	384	5	1,301
TOTAL		9,406	6,314	362	1,306	2,641	20,029

TABLE 17I : Destinations of leavers who have not sat A-level, SCSYS or Scottish Higher exams.

		To Another School			To Further Education	Employment	Other	TOTAL
		Indep.	L.E.A.	Overseas				
BOYS	Leaving at end of Pre-Prep	194	91	1	0	0	4	290
	Leaving at end of Prep	125	28	3	0	0	0	156
	Leaving immediately after GCSE	11	5	2	4	0	0	22
	Others	39	30	8	10	0	9	96
GIRLS	Leaving at end of Pre-Prep	171	221	40	1	0	25	458
	Leaving at end of Prep	612	383	101	0	0	35	1,131
	Leaving immediately after GCSE	1,743	1,484	150	1,567	90	129	5,163
	Others	1,051	971	534	437	56	204	3,253
TOTAL		3,946	3,213	839	2,019	146	406	10,569

TABLE 17J : Destinations of leavers who have sat A-level, SCSYS or Scottish Higher exams.

			Boys	Girls	TOTAL	
Pupils who left to take Higher Education Courses in the U.K. or Overseas	Entrants to Universities, Including Deferred Entry	Arts	16	2,706	2,722	
		Science	22	1,672	1,694	
		Engineering/Technology	1	225	226	
		Social Science	6	926	932	
	Degree Courses at Polytechnic	Arts	4	516	520	
		Science	3	241	244	
		Engineering/Technology	0	68	68	
		Social Science	5	523	528	
	All other H.E. Courses	Arts	5	500	505	
		Science	1	126	127	
		Engineering/Technology	0	23	23	
		Social Science	1	211	212	
	Pupils who left to continue Secondary Education elsewhere		To another Indep. School	0	461	461
			To a Maintained School	0	261	261
Other Pupils who left	For Further Education or Training		1	477	478	
	For Employment		1	285	286	
	Others		0	322	322	
TOTAL			66	9,543	9,609	

TABLE 18A - GBGSA

NUMBER OF PUPILS IN JANUARY 1992 AND CHANGES SINCE 1991

Figures for 1992 are printed in normal type, those for 1991 and per cent changes are printed in *italic type* below.

GBGSA AGE ON 31 AUG 91	BOYS			GIRLS			TOTAL
	BOARDERS FULL	WEEKLY	DAY	BOARDERS FULL	WEEKLY	DAY	
2	0	0	26	0	0	37	63
	0	0	21	0	0	28	49
			<i>+23.8%</i>			<i>+32.1%</i>	<i>+28.6%</i>
3	0	0	45	0	0	98	143
	0	0	24	0	0	41	65
			<i>+87.5%</i>			<i>+139.0%</i>	<i>+120.0%</i>
4	0	0	38	0	0	118	156
	0	0	56	0	0	91	147
			<i>-32.1%</i>			<i>+29.7%</i>	<i>+6.1%</i>
5	0	0	52	0	0	120	172
	0	0	45	0	0	135	180
			<i>+15.6%</i>			<i>-11.1%</i>	<i>-4.4%</i>
6	0	0	51	0	0	129	180
	0	0	41	0	0	116	157
			<i>+24.4%</i>			<i>+11.2%</i>	<i>+14.6%</i>
7	0	0	21	1	0	132	154
	0	0	27	2	0	146	175
			<i>-22.2%</i>	<i>-50.0%</i>		<i>-9.6%</i>	<i>-12.0%</i>
8	0	0	27	4	2	162	195
	0	0	28	2	3	173	206
			<i>-3.6%</i>	<i>+100.0%</i>	<i>-33.3%</i>	<i>-6.4%</i>	<i>-5.3%</i>
9	0	0	27	2	1	157	187
	0	0	23	5	6	215	249
			<i>+17.4%</i>	<i>-60.0%</i>	<i>-83.3%</i>	<i>-27.0%</i>	<i>-24.9%</i>
10	0	0	34	12	10	243	299
	0	0	27	6	8	224	265
			<i>+25.9%</i>	<i>+100.0%</i>	<i>+25.0%</i>	<i>+8.5%</i>	<i>+12.8%</i>
11	0	0	30	6	12	318	366
	0	0	36	25	18	333	412
			<i>-16.7%</i>	<i>-76.0%</i>	<i>-33.3%</i>	<i>-4.5%</i>	<i>-11.2%</i>
12	0	0	41	31	17	338	427
	0	0	31	37	18	331	417
			<i>+32.3%</i>	<i>-16.2%</i>	<i>-5.6%</i>	<i>+2.1%</i>	<i>+2.4%</i>
13	0	0	41	23	20	321	405
	0	0	48	38	26	370	482
			<i>-14.6%</i>	<i>-39.5%</i>	<i>-23.1%</i>	<i>-13.2%</i>	<i>-16.0%</i>
14	0	0	41	29	24	351	445
	0	0	40	51	27	390	508
			<i>+2.5%</i>	<i>-43.1%</i>	<i>-11.1%</i>	<i>-10.0%</i>	<i>-12.4%</i>
15	0	0	36	38	33	390	497
	0	0	25	50	30	404	509
			<i>+44.0%</i>	<i>-24.0%</i>	<i>+10.0%</i>	<i>-3.5%</i>	<i>-2.4%</i>
16	0	0	17	15	11	183	226
	0	0	20	27	14	201	262
			<i>-15.0%</i>	<i>-44.4%</i>	<i>-21.4%</i>	<i>-9.0%</i>	<i>-13.7%</i>
17	0	0	14	11	7	141	173
	0	0	11	12	9	176	208
			<i>+27.3%</i>	<i>-8.3%</i>	<i>-22.2%</i>	<i>-19.9%</i>	<i>-16.8%</i>
18	0	0	7	3	2	3	15
	0	0	0	2	1	4	7
				<i>+50.0%</i>	<i>+100.0%</i>	<i>-25.0%</i>	<i>+114.3%</i>
19	0	0	0	0	0	0	0
	0	0	0	0	0	1	1
						<i>-100.0%</i>	<i>-100.0%</i>
TOTAL	0	0	548	175	139	3,241	4,103
	0	0	503	257	160	3,379	4,299
			<i>+8.9%</i>	<i>-31.9%</i>	<i>-13.1%</i>	<i>-4.1%</i>	<i>-4.6%</i>

TABLE 18B - GBGSA NUMBERS AND FEES BY AREAS

ANALYSIS OF PUPIL NUMBERS AND AVERAGE TERMLY FEES (PERCENT CHANGES ARE BASED ON 1991 FIGURES)

AREA	No. of Schools	BOYS			GIRLS			TOTAL			Boarding	Weekly	Day Fee	Day Fee	Day Fee	Average
		Boarding	Full	Weekly	Boarding	Full	Weekly	Boarding	Full	Weekly	Fee	Boarding	Boarding	Day	Day	Fee
Scotland	2		228	18	4	757	18	4	985	£2545	£2545	£1187	£1035	£1100	£1132	
			+3.2%	-5.3%		-2.7%	-5.3%		-1.4%	+12.6%	+12.6%	+12.7%	+10.6%	+11.6%	+11.6%	
The North	2		23	27	2	701	27	2	724	£2020	£1100	£865	£978	£1014		
			-4.2%	+3.8%	+100.0%	-5.0%	+3.8%	+100.0%	-5.0%	+12.2%		+11.1%	+0.6%	+6.1%	+6.4%	
W Midlands	3		94	21	92	651	21	92	745	£2440	£2141	£1213	£1074	£1119	£1248	
			+22.1%	-54.3%	-21.4%	-1.7%	-54.3%	-21.4%	+0.8%	+9.9%	+9.3%	+9.8%	+86.1%	+49.0%	+38.4%	
E Midlands	1		12	41	34	228	41	34	240	£2180	£2180	£1340		£1340	£1547	
				-18.0%	-2.9%	-1.7%	-18.0%	-2.9%	+3.4%	+5.8%	+5.8%	+6.3%		+6.3%	+6.1%	
South East	4		191	68	7	904	68	7	1095	£2227	£2030	£1025	£1088	£1079	£1149	
			+5.5%	-41.4%	+133.3%	-6.7%	-41.4%	+133.3%	-4.8%	+11.2%	+6.6%	+11.1%	+13.1%	+12.9%	+12.6%	
All	12		548	175	139	3241	175	139	3789	£2229	£2161	£1175	£1036	£1089	£1170	
			+8.9%	-31.9%	-13.1%	-4.1%	-31.9%	-13.1%	-2.4%	+10.1%	+8.5%	+10.4%	+20.6%	+16.3%	+15.3%	

(A new method of calculating average fees has been used this year.

The figures shown are now 'average fee per pupil', rather than 'average fee per school'.)

TABLES 18C, D, E, F, G - GBGSA STAFFING AND COURSES OF STUDY

TABLE 18C : Full Time Staff

	Graduates			Non-Graduates		TOTAL
	Maths	Science	Other	Qualified	Non-Qualified	
Men	7	8	18	3	0	36
Women	21	31	120	78	2	252

TABLE 18D : Part Time Staff

	Graduates		Non-Graduates		TOTAL
	Men	Women	Men	Women	
Number	6	93	1	63	163
Aggregate number of hours per week	60	1,174	6	893	2,133

STAFFING

TABLE 18E : Full Time Staff Changes

NUMBER	Coming from	Going to
Independent Schools	7	6
Maintained Schools	12	2
University, Polytechnic or Training College	3	1
Industry, etc.	1	0
Other (incl. Retirement)	4	25
TOTAL	27	34

TABLE 18F : Number of Sixth Form Pupils

Number of Pupils who have completed their GCSE or (in Scotland) their Standard Grades. Pupils who are re-taking some of these exams are included. Each first and second year sixth form pupil is included once.			
	Boys	Girls	TOTAL
Number on A-level or (in Scotland) Higher Grade or CSYS Courses.	40	369	409
NUMBER on CSE/GCSE/Standard Grade re-take Courses.	0	60	60
Number on other Courses.	0	0	0
TOTAL	40	429	469

COURSES OF STUDY

TABLE 18G :

Sixth Form Pupils Analysed by Course of Study

Each Sixth form pupil is included once for each A-level of SCSYS course being studied (e.g. a pupil taking three A-level courses is counted three times.)

AS-level courses are counted at the rate 2 AS-level = 1 A-level and Scottish Higher Grade courses at the rate of 3 Highers = 2 A-levels.

	Boys	Girls	TOTAL
Arts	19	147	166
Classics	8	19	27
English	10	174	184
Mathematics	18	93	111
Modern Languages	1	108	109
Science/Technology	33	264	297
Social Science	16	179	195
TOTAL	105	984	1,089

TABLES 18H, I, J - GBGSA

SOURCES OF ENTRY, DESTINATIONS OF LEAVERS

TABLE 18H : Sources of Entry

		From Another School		From Overseas		Other	TOTAL
		Indep.	Maint.	Expatriate	Foreign		
BOYS	From Pre-Prep/Nursery/No School	15	18	0	0	38	71
	From Prep/Primary School	23	19	0	1	0	43
	From Senior School (Pre GCSE)	0	1	1	0	0	2
	From Senior School (Post GCSE)	0	1	0	0	0	1
GIRLS	From Pre-Prep/Nursery/No School	64	39	0	2	77	182
	From Prep/Primary School	94	101	7	20	25	247
	From Senior School (Pre GCSE)	42	48	3	35	0	128
	From Senior School (Post GCSE)	3	8	1	2	0	14
TOTAL		241	235	12	60	140	688

TABLE 18I : Destinations of leavers who have not sat A-level, SCSYS or Scottish Higher exams.

		To Another School			To Further Education	Employment	Other	TOTAL
		Indep.	L.E.A.	Overseas				
BOYS	Leaving at end of Pre-Prep	8	4	0	0	0	0	12
	Leaving at end of Prep	5	1	0	0	0	0	6
	Leaving immediately after GCSE	0	1	0	5	1	0	7
	Others	7	19	0	0	0	0	26
GIRLS	Leaving at end of Pre-Prep	5	4	1	0	0	1	11
	Leaving at end of Prep	15	15	2	0	0	0	32
	Leaving immediately after GCSE	68	73	10	79	4	1	235
	Others	45	40	45	4	2	10	146
TOTAL		153	157	58	88	7	12	475

TABLE 18J : Destinations of leavers who have sat A-level, SCSYS or Scottish Higher exams.

			Boys	Girls	TOTAL
Pupils who left to take Higher Education Courses in the U.K. or Overseas	Entrants to Universities, Including Deferred Entry	Arts	0	35	35
		Science	0	22	22
		Engineering/Technology	0	7	7
		Social Science	0	10	10
	Degree Courses at Polytechnic	Arts	0	22	22
		Science	1	8	9
		Engineering/Technology	2	1	3
		Social Science	0	31	31
	All other H.E. Courses	Arts	0	7	7
		Science	0	5	5
		Engineering/Technology	0	0	0
		Social Science	1	7	8
	Pupils who left to continue Secondary Education elsewhere	To another Indep. School	0	3	3
		To a Maintained School	0	21	21
Other Pupils who left	For Further Education or Training		1	26	27
	For Employment		0	13	13
	Others		1	7	8
	TOTAL		6	225	231

TABLE 19A - IAPS
NUMBER OF PUPILS IN JANUARY 1992 AND CHANGES SINCE 1991

IAPS AGE ON	BOARDS FULL	BOYS WEEKLY	DAY	GIRLS		TOTAL		
				BOARDERS FULL	WEEKLY			
31 AUG 91	2	0	0	645	0	0	558	1,203
		0	0	605	0	0	495	1,100
			+6.6%				+12.7%	+9.4%
3	0	0	2,477	0	0	0	1,877	4,354
	0	0	2,330	0	0	0	1,833	4,163
			+6.3%				+2.4%	+4.6%
4	0	0	4,646	1	0	0	3,138	7,785
	4	0	4,598	4	0	0	3,121	7,727
			+1.0%				+0.5%	+0.8%
5	-100.0%	3	5,043	5	1	3,343	8,396	
	11	2	5,078	3	4	3,234	8,332	
			-0.7%				+3.4%	+0.8%
6	-72.7%	-50.0%	-0.7%	-66.7%	-75.0%	-7	3,409	9,007
	43	22	5,509	17	6	3,408	8,972	
	52	18	5,472	16				+0.4%
	-17.3%	+22.2%	+0.7%	+6.2%	+16.7%		+0.0%	+0.4%
7	341	90	7,412	101	35	3,838	11,817	
	424	102	7,227	136	29	3,614	11,532	
	-19.6%	-11.8%	+2.6%	-25.7%	+20.7%	+6.2%	+2.5%	
8	1,266	224	8,106	383	89	3,855	13,923	
	1,466	247	8,189	399	117	3,942	14,360	
	-13.6%	-9.3%	-1.0%	-4.0%	-23.9%	-2.2%	-3.0%	
9	1,912	344	8,321	587	173	4,066	15,403	
	2,104	392	8,791	663	166	4,009	16,125	
	-9.1%	-12.2%	-5.3%	-11.5%	+4.2%	+1.4%	+4.5%	
10	2,529	449	8,659	806	204	3,882	16,529	
	2,760	538	8,682	923	208	3,749	16,860	
	-8.4%	-16.5%	-0.3%	-12.7%	-1.9%	+3.5%	-2.0%	
11	3,073	624	6,651	948	180	1,386	12,862	
	3,285	698	6,735	991	209	1,288	13,206	
	-6.5%	-10.6%	-1.2%	-4.3%	-13.9%	+7.6%	-2.1%	
12	3,473	844	5,348	790	143	711	11,309	
	3,515	840	4,990	695	138	652	10,830	
	-1.2%	+0.5%	+7.2%	+13.7%	+3.6%	+9.0%	+4.4%	
13	435	90	535	64	22	79	1,225	
	412	88	438	32	13	74	1,087	
	+5.6%	+2.3%	+28.1%	+3.2%	+69.2%	+6.8%	+12.7%	
14	10	2	100	20	10	52	194	
	13	2	106	13	12	44	190	
	-23.1%		-5.7%	+53.8%	-16.7%	+18.2%	+2.1%	
15	0	2	97	9	14	30	152	
	1	2	109	11	13	26	162	
	-100.0%		-11.0%	-18.2%	+7.7%	+15.4%	-6.2%	
16	0	0	54	3	1	2	60	
	0	1	46	0	0	2	49	
	-100.0%		+17.4%				+22.4%	
17	0	0	31	0	0	1	32	
	0	0	32	0	0	0	32	
			-3.1%					
18	0	0	3	0	0	0	3	
	0	0	3	0	0	0	3	
19	0	0	1	0	0	0	1	
	0	0	0	0	0	1	1	
						-100.0%		
TOTAL	13,085	2,692	63,638	3,734	879	30,227	114,255	
	14,047	2,930	63,431	3,916	915	29,492	114,731	
	-6.8%	-8.1%	+0.3%	-4.6%	-3.9%	+2.5%	-0.4%	

TABLE 19B - IAPS NUMBERS AND FEES BY AREAS

ANALYSIS OF PUPIL NUMBERS AND AVERAGE TERMLY FEES
(PERCENT CHANGES ARE BASED ON 1991 FIGURES)

AREA	No. of Schools	BOYS			GIRLS			TOTAL			Boarding	Weekly	Day Fee	Day Fee	Day Fee	Average
		Boarding	Day	Day	Boarding	Day	Day	Boarding	Day	Day	Fee	Boarding	Boarding	Day	Average	Fee
		Full			Full			Full				Fee	Schools	Schools		
Scotland	18	481	58	1602	218	24	980	699	82	2582	£2331	£2263	£1097	£1070	£1094	£1376
		-8.9%	-18.3%	+1.6%	-9.2%	-25.0%	+3.5%	-9.0%	-20.4%	+2.3%	+10.1%	+11.2%	+14.6%	+9.2%	+14.1%	+12.6%
The North	52	1217	175	5839	308	109	2664	1525	284	8503	£2123	£2024	£1275	£986	£1082	£1264
		-6.7%	-12.1%	+2.6%	-8.6%	-3.5%	+3.9%	-7.1%	-9.0%	+3.0%	+10.9%	+13.1%	+12.3%	+12.2%	+12.2%	+12.0%
Wales	7	131	51	815	50	22	497	181	73	1312	£2011	£1586	£1224	£875	£1132	£1253
		-17.6%	+6.2%	-1.9%	-21.4%	+4.0%	-13.4%	-3.9%	+0.2%	+11.1%	+10.9%	+11.1%	+4.9%	+9.8%	+10.0%	
W Midlands	60	1599	420	6387	446	251	3566	2045	671	9953	£2147	£1975	£1442	£1061	£1290	£1459
		-8.5%	-2.1%	+0.3%	+0.5%	+3.3%	+1.8%	-6.7%	-0.1%	+0.9%	+11.5%	+10.9%	+11.7%	+13.0%	+12.2%	+11.9%
E Midlands	68	1888	326	8730	304	61	4228	2192	387	12958	£2369	£2113	£1437	£1128	£1275	£1449
		-2.9%	-9.7%	+1.0%	-16.0%	+2.2%	-5.0%	-8.3%	+1.4%	+9.9%	+10.5%	+10.7%	+12.0%	+11.3%	+10.9%	
East Anglia	35	636	298	4906	220	98	2066	856	396	6972	£2320	£2256	£1475	£928	£1223	£1384
		-9.1%	-4.2%	+1.8%	-6.0%	+8.9%	+0.9%	-8.4%	-1.2%	+1.5%	+11.1%	+10.9%	+12.6%	+12.6%	+12.6%	+12.2%
South & West	57	2020	365	5467	960	158	3027	2980	523	8494	£2454	£2157	£1478	£964	£1353	£1663
		-8.6%	-14.7%	-0.7%	-1.3%	-10.7%	+8.9%	-6.4%	-13.6%	+2.5%	+11.2%	+11.6%	+11.2%	+10.6%	+11.1%	+11.1%
Greater London	56	139	68	10750		3	3043	139	71	13793	£1043	£2260	£1468	£1320	£1343	£1343
		-18.7%	-9.3%	+0.4%			+0.4%	-18.7%	-5.3%	+0.4%	+13.4%	+13.9%	+13.0%	+11.8%	+11.9%	+12.0%
South East	166	4880	878	18548	1180	140	10057	6060	1018	28605	£2348	£2167	£1543	£1152	£1340	£1533
		-6.0%	-9.2%	-1.0%	-4.5%	-7.9%	+1.3%	-5.7%	-9.0%	-0.2%	+11.6%	+12.2%	+12.0%	+12.8%	+12.4%	+12.1%
Ireland	4	94	53	594	48	13	99	142	66	693	£1738	£1731	£946		£946	£1122
		+6.8%	+29.3%	+7.4%	+17.1%	-31.6%	+25.3%	+10.1%	+10.0%	+9.7%	+6.4%	+12.9%	+21.9%		+21.9%	+16.9%
All	523	13085	2692	63638	3734	879	30227	16819	3571	93865	£2303	£2106	£1440	£1138	£1283	£1457
		-6.8%	-8.1%	+0.3%	-4.6%	-3.9%	+2.5%	-6.4%	-7.1%	+1.0%	+11.1%	+11.5%	+11.9%	+12.1%	+12.1%	+11.8%

(A new method of calculating average fees has been used this year.
The figures shown are now 'average fee per pupil', rather than 'average fee per school'.)

TABLES 19C, D, E- IAPS STAFFING

TABLE 19C : Full Time Staff

	Graduates			Non-Graduates		TOTAL
	Maths	Science	Other	Qualified	Non-Qualified	
Men	253	406	2,333	918	227	4,137
Women	92	178	1,922	2,518	308	5,018

TABLE 19D : Part Time Staff

	Graduates		Non-Graduates		TOTAL
	Men	Women	Men	Women	
Number	279	761	315	1,375	2,730
Aggregate number of hours per week	2,926	10,026	3,042	18,132	34,126

TABLE 19E : Full Time Staff Changes

NUMBER	Coming from	Going to
Independent Schools	465	344
Maintained Schools	283	96
University, Polytechnic or Training College	141	68
Industry, etc.	46	34
Other (incl. Retirement)	198	491
TOTAL	1,133	1,033

TABLES 19H, I- IAPS SOURCES OF ENTRY DESTINATIONS OF LEAVERS

TABLE 19H : Sources of Entry

		From Another School		From Overseas		Other	TOTAL
		Indep.	Maint.	Expatriate	Foreign		
BOYS	From Pre-Prep/Nursery/No School	3,225	802	109	90	4,372	8,598
	From Prep/Primary School	3,410	4,074	440	464	216	8,604
	From Senior School (Pre GCSE)	29	34	1	17	0	81
	From Senior School (Post GCSE)	1	5	0	4	8	18
GIRLS	From Pre-Prep/Nursery/No School	1,200	329	45	39	2,909	4,522
	From Prep/Primary School	1,510	1,490	214	204	252	3,670
	From Senior School (Pre GCSE)	21	30	0	5	12	68
	From Senior School (Post GCSE)	3	0	0	0	0	3
TOTAL		9,399	6,764	809	823	7,769	25,564

TABLE 19I : Destinations of leavers who have not sat A-level, SCSYS or Scottish Higher exams.

		To Another School			To Further Education	Employment	Other	TOTAL
		Indep.	L.E.A.	Overseas				
BOYS	Leaving at end of Pre-Prep	1,074	490	92	8	0	37	1,701
	Leaving at end of Prep	10,149	1,328	242	7	8	85	11,819
	Leaving immediately after GCSE	90	39	2	42	0	5	178
	Others	1,222	909	327	1	0	192	2,651
GIRLS	Leaving at end of Pre-Prep	541	288	55	1	0	16	901
	Leaving at end of Prep	4,044	630	125	0	0	59	4,858
	Leaving immediately after GCSE	29	18	2	12	0	3	64
	Others	682	394	181	8	0	78	1,343
TOTAL		17,831	4,096	1,026	79	8	475	23,515

TABLE 20A - ISAI

NUMBER OF PUPILS IN JANUARY 1992 AND CHANGES SINCE 1991

Figures for 1992 are printed in normal type, those for 1991 and per cent changes are printed in italic type below.

ISAI AGE ON 31 AUG 91	BOYS		GIRLS		TOTAL
	BOARDS FULL	DAY WEEKLY	BOARDS FULL	DAY WEEKLY	
2	0	0 492	0	0 603	1,095
	0	0 510	0	0 592	1,102
		-3.5%		+1.9%	-0.6%
3	0	0 1,644	0	0 1,594	3,238
	0	0 1,572	0	0 1,580	3,152
		+4.6%		+0.9%	+2.7%
4	1	0 2,223	1	0 2,152	4,377
	1	0 2,363	0	0 2,254	4,618
		-5.9%		-4.5%	-5.2%
5	2	2 2,313	1	0 2,198	4,516
	2	1 2,398	0	0 2,145	4,546
		-3.5%		+2.5%	-0.7%
6	7	4 2,349	4	3 2,136	4,503
	5	4 2,289	2	2 2,043	4,345
		+100.0%		+3.0%	+3.6%
7	15	6 2,013	13	3 1,981	4,031
	7	11 2,084	22	5 2,127	4,256
		-45.5%		-40.0%	-5.3%
8	21	20 1,881	27	10 2,057	4,016
	33	16 1,933	35	6 2,052	4,075
		+25.0%		+66.7%	-1.4%
9	62	27 1,938	49	16 2,096	4,188
	56	26 1,932	51	15 2,132	4,212
		+3.8%		+6.7%	-0.6%
10	84	39 1,870	89	24 2,170	4,276
	98	34 2,068	77	25 2,210	4,512
		+14.7%		-4.0%	-5.2%
11	161	50 1,730	128	34 1,756	3,859
	176	73 1,709	125	47 2,077	4,207
		-31.5%		-27.7%	-8.3%
12	212	73 1,653	152	39 1,961	4,090
	200	73 1,631	166	35 1,762	3,867
		+6.0%		+11.4%	+5.8%
13	278	69 1,621	171	32 1,660	3,831
	292	81 1,679	236	28 1,860	4,176
		-14.8%		-10.8%	-8.3%
14	348	78 1,653	228	33 1,773	4,113
	322	87 1,616	224	32 1,814	4,095
		-10.3%		+3.1%	+0.4%
15	362	82 1,549	229	39 1,758	4,019
	410	104 1,657	248	42 1,905	4,366
		-21.2%		-7.1%	-7.9%
16	227	47 605	102	15 659	1,655
	213	36 617	95	19 635	1,615
		+30.6%		-21.1%	+2.5%
17	114	16 409	70	4 450	1,063
	93	16 390	54	6 461	1,020
		+4.9%		-33.3%	+4.2%
18	42	5 81	11	2 134	275
	41	5 87	11	1 104	249
		-6.9%		+100.0%	+10.4%
19	13	1 23	3	0 44	84
	8	0 27	3	0 55	93
		-14.8%		-20.0%	-9.7%
TOTAL	1,949	519 26,047	1,278	254 27,182	57,229
	1,957	567 26,562	1,349	263 27,808	58,506
		-0.4%		-3.4%	-2.2%

**TABLE 20B - ISAI
NUMBERS AND FEES BY AREAS**

ANALYSIS OF PUPIL NUMBERS AND AVERAGE TERMLY FEES
(PERCENT CHANGES ARE BASED ON 1991 FIGURES)

AREA	No. of Schools	BOYS			GIRLS			TOTAL			Boarding	Weekly	Day Fee	Day Fee	Day Fee	Average
		Boarding	Weekly	Day	Boarding	Weekly	Day	Boarding	Weekly	Day	Fee	Boarding	Boarding	Day	Average	Fee
		Full			Full			Full				Fee	Schools	Schools		
The North	48	443	51	5582	425	25	5641	868	76	11223	£1962	£1995	£1075	£836	£859	£942
		+2.8%	-20.3%	-1.4%	-4.9%	+8.7%	+1.0%	-1.1%	-12.6%	-0.2%	+9.2%	+16.7%	+11.6%	+11.9%	+11.8%	+11.6%
Wales	11	3	4	871			816	3	4	1687	£1947	£1837	£997	£867	£868	£872
		-62.5%	+33.3%	-2.5%			-1.7%	-62.5%	+33.3%	-2.1%	+5.0%	+5.0%	-14.8%	+9.6%	+9.3%	+9.4%
W Midlands	28	335	98	3001	138	17	2812	473	115	5813	£2590	£2574	£1170	£1030	£1046	£1167
		+30.4%	-5.8%	+0.5%	-9.8%	-5.6%	-2.9%	+15.4%	-5.7%	-1.2%	+15.4%	+13.3%	+11.3%	+14.3%	+13.9%	+14.2%
E Midlands	35	187	54	3363	174	28	3471	361	82	6834	£1899	£1940	£1018	£955	£969	£1027
		-15.4%	+20.0%	-2.9%	+1.8%	-22.2%	-2.8%	-7.9%	+1.2%	-2.9%	+10.0%	+9.7%	+13.7%	+11.8%	+12.3%	+12.1%
East Anglia	27	163	78	2333	106	25	2753	269	103	5086	£2335	£2227	£1277	£926	£979	£1068
		-8.9%	-7.1%	-1.4%	-18.5%	-10.7%	-4.1%	-12.9%	-8.0%	-2.9%	+15.0%	+12.2%	+15.5%	+12.7%	+13.2%	+13.4%
South & West	23	314	66	1859	130	48	1791	444	114	3650	£2213	£1849	£1041	£840	£915	£1073
		-6.8%	-22.4%	-5.3%	-0.8%	-5.9%	-4.3%	-5.1%	-16.2%	-4.8%	+8.3%	+9.1%	+9.7%	+8.7%	+9.1%	+8.9%
Greater London	51	88	23	5053	27	4	5682	115	27	10735	£2011	£1815	£1254	£1311	£1308	£1317
		-12.0%	-17.9%	-2.2%	+3.8%	-42.9%	-2.7%	-8.7%	-22.9%	-2.5%	+15.8%	+14.9%	+14.8%	+10.6%	+10.7%	+10.8%
South East	45	416	145	3985	278	107	4216	694	252	8201	£2529	£2908	£1775	£1036	£1268	£1404
		-1.9%	-5.8%	-1.9%	-4.5%	+7.0%	-3.0%	-2.9%	-0.8%	-2.5%	+13.1%	+11.1%	+8.6%	+10.2%	+9.5%	+10.0%
All	268	1949	519	26047	1278	254	27182	3227	773	53229	£2230	£2370	£1310	£1018	£1064	£1144
		-0.4%	-8.5%	-1.9%	-5.3%	-3.4%	-2.3%	-2.4%	-6.9%	-2.1%	+11.8%	+11.7%	+10.7%	+11.4%	+11.3%	+11.4%

(A new method of calculating average fees has been used this year.

The figures shown are now 'average fee per pupil', rather than 'average fee per school'.)

TABLES 20C, D, E, F, G - ISAI STAFFING AND COURSES OF STUDY

TABLE 20C : Full Time Staff

	Graduates			Non-Graduates		TOTAL
	Maths	Science	Other	Qualified	Non-Qualified	
Men	105	255	599	196	41	1,196
Women	96	186	1,075	1,286	266	2,909

TABLE 20D : Part Time Staff

	Graduates		Non-Graduates		TOTAL
	Men	Women	Men	Women	
Number	254	851	199	1,127	2,431
Aggregate number of hours per week	3,116	11,348	2,014	14,389	30,867

STAFFING

TABLE 20E : Full Time Staff Changes

NUMBER	Coming from	Going to
Independent Schools	128	93
Maintained Schools	157	96
University, Polytechnic or Training College	76	21
Industry, etc.	33	10
Other (incl. Retirement)	166	305
TOTAL	560	525

TABLE 20F : Number of Sixth Form Pupils

Number of Pupils who have completed their GCSE or (in Scotland) their Standard Grades. Pupils who are re-taking some of these exams are included. Each first and second year sixth form pupil is included once.				
	Boys	Girls	TOTAL	
Number on A-level or (in Scotland) Higher Grade or CSYS Courses.	911	873	1,784	
NUMBER on CSE/GCSE/ Standard Grade re-take Courses.	228	76	304	
Number on other Courses.	59	214	273	
TOTAL	1,198	1,163	2,361	

COURSES OF STUDY

TABLE 20G :

Sixth Form Pupils Analysed by Course of Study

Each Sixth form pupil is included once for each A-level of SCSYS course being studied (e.g. a pupil taking three A-level courses is counted three times.)

AS-level courses are counted at the rate 2 AS-level = 1 A-level and Scottish Higher Grade courses at the rate of 3 Highers = 2 A-levels.

	Boys	Girls	TOTAL
Arts	492	559	1,051
Classics	22	45	67
English	228	363	591
Mathematics	439	232	671
Modern Languages	131	295	426
Science/Technology	830	516	1,346
Social Science	383	325	708
TOTAL	2,525	2,335	4,860

TABLES 20H, I, J - ISAI

SOURCES OF ENTRY, DESTINATIONS OF LEAVERS

TABLE 20H : Sources of Entry

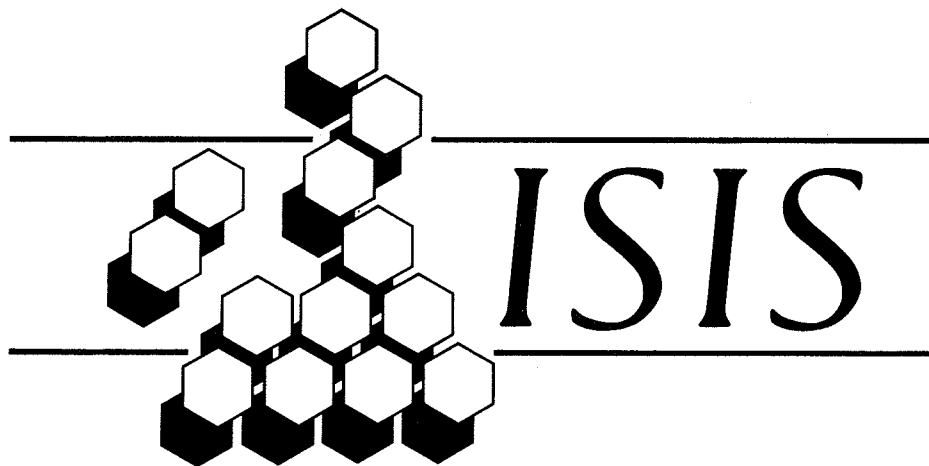
		From Another School		From Overseas		Other	TOTAL
		Indep.	Maint.	Expatriate	Foreign		
BOYS	From Pre-Prep/Nursery/No School	506	146	9	33	2,220	2,914
	From Prep/Primary School	894	1,301	150	136	200	2,681
	From Senior School (Pre GCSE)	327	382	119	278	8	1,114
	From Senior School (Post GCSE)	30	24	30	37	8	129
GIRLS	From Pre-Prep/Nursery/No School	448	171	7	46	2,110	2,782
	From Prep/Primary School	830	1,211	164	155	135	2,495
	From Senior School (Pre GCSE)	297	218	112	156	15	798
	From Senior School (Post GCSE)	42	74	34	27	2	179
TOTAL		3,374	3,527	625	868	4,698	13,092

TABLE 20I : Destinations of leavers who have not sat A-level, SCSYS or Scottish Higher exams.

		To Another School			To Further Education	Employment	Other	TOTAL
		Indep.	L.E.A.	Overseas				
BOYS	Leaving at end of Pre-Prep	670	310	67	0	0	58	1,105
	Leaving at end of Prep	1,098	536	71	0	0	60	1,765
	Leaving immediately after GCSE	129	358	40	909	168	41	1,645
	Others	387	659	222	59	40	124	1,491
GIRLS	Leaving at end of Pre-Prep	486	294	34	0	0	55	869
	Leaving at end of Prep	979	497	90	3	0	87	1,656
	Leaving immediately after GCSE	248	380	35	966	84	50	1,763
	Others	531	665	242	58	58	65	1,619
TOTAL		4,528	3,699	801	1,995	350	540	11,913

TABLE 20J : Destinations of leavers who have sat A-level, SCSYS or Scottish Higher exams.

			Boys	Girls	TOTAL
Pupils who left to take Higher Education Courses in the U.K. or Overseas	Entrants to Universities, Including Deferred Entry	Arts	35	97	132
		Science	75	71	146
		Engineering/Technology	26	5	31
		Social Science	35	21	56
	Degree Courses at Polytechnic	Arts	12	29	41
		Science	23	8	31
		Engineering/Technology	13	3	16
		Social Science	35	19	54
	All other H.E. Courses	Arts	14	24	38
		Science	8	6	14
		Engineering/Technology	7	0	7
		Social Science	8	11	19
Pupils who left to continue Secondary Education elsewhere		To another Indep. School	24	18	42
		To a Maintained School	28	23	51
Other Pupils who left	For Further Education or Training		27	36	63
	For Employment		40	77	117
	Others		18	12	30
TOTAL			428	460	888



INDEPENDENT SCHOOLS INFORMATION SERVICE

The leaflets and other publications listed below are available from National ISIS, 56 Buckingham Gate, London SW1E 6AG and are supplied on receipt of **two first class stamps for each, except where the price is stated.**

NATIONAL ISIS PUBLICATIONS

PLANNING AN INDEPENDENT EDUCATION — an introductory leaflet for parents interested in sending their children to independent schools.

WHAT IS ISIS? — explains the ISIS organisation.

THE RIGHT START — what preparatory schools can offer your child.

SCHOOL FEES — some ways of planning ahead to reduce costs.

SCHOLARSHIPS AND GRANTS — some ways of receiving help with school fees.

ASSISTED PLACES SCHOOLS — a list of secondary schools in the DES Assisted Places Scheme.

QUESTIONS TO ASK when you visit a school.

INDEPENDENT SCHOOLS: THE LEGAL CASE — by Anthony Lester QC and David Pannick. Price £5 (including postage).

INDEPENDENT EDUCATION IN WESTERN EUROPE — Price £5 (including postage).

PRIVATE EDUCATION IN THE U.S.A. AND CANADA — Price £2 (including postage).

PRIVATE EDUCATION IN AUSTRALIA AND NEW ZEALAND — Price £2 (including postage).

PRIVATE EDUCATION IN SOUTHERN AFRICA — Price £5 (including postage).

GOOD COMMUNICATIONS GUIDE — a guide to school public relations and marketing. Price £2.50 (including postage).

BOARDING SCHOOLS IN BRITAIN

THE ISIS MAGAZINE — Price £1 per copy (3 issues per year).

CHOOSING YOUR INDEPENDENT SCHOOL

A guide for parents to 1,400 schools in
membership of National ISIS with details including
fees, pupil numbers, facilities, entry requirements, subjects
and 50 pages of guidance on how to choose a school.

Available from bookshops at £4.95 or by post from
National ISIS, 56 Buckingham Gate, London SW1E 6AG.

1992-93 edition available October 1992 at £6.95 plus £1.00 p&p.

This new edition will include a summary of schools, 1992 A-level results.

Analysis by Monkton Combe Computing Service, 1 Church Cottages, Monkton Combe, Bath BA2 7HBB.
An Acorn Archimedes Computer was used for the production of these statistics and the typesetting of this book.

Printed by Ralph Allen Press Ltd., 4/5 Milk Street, Bath.

Published April 1992.