

INDEPENDENT SCHOOLS INFORMATION SERVICE

ANNUAL CENSUS 1991

STATISTICAL SURVEY OF INDEPENDENT SCHOOLS

56 Buckingham Gate London SW1E 6AG Telephone 071 630 8793 or 8794

INDEPENDENT SCHOOLS
INFORMATION SERVICE

56 Buckingham Gate, London SW1E 6AG 071-630 8793/4

Director: D. J. Woodhead
Deputy Director (Press & PR): R. C. Davison

NATIONAL ISIS was established in 1972 as an information centre by the leading Associations of independent schools in Britain. It is now part of the Independent Schools Joint Council.

It publishes leaflets and booklets on various aspects of independent education (see inside back cover) and "Choosing Your Independent School," a paperback guide to 1,400 day and boarding schools for boys and girls aged 2 — 19 in the UK and Eire. Its Press Office handles relations with the media.

There are eight ISIS regions covering the entire United Kingdom which publish handbooks giving details of schools in their areas.

The **ISIS ASSOCIATION** is for friends and supporters of independent education. The annual subscription is £10 for UK members and £12 for overseas members. For further details, please write to the above address.

ISIS INTERNATIONAL helps parents living overseas and in the U.K. to find suitable schools for their children. It operates a consultancy service for multinational companies whose staff require independent schools for their children. For details and costs, please write to the Senior Consultant, ISIS International, at the above address.

CONTENTS

Page

3	LIST of Associations	
4-7	INTRODUCTION to ISIS Census 1991	
8	ALL	Table 1 Number of schools and pupils
9	COMPARATIVE	Table 2 Comparative totals and staff/pupil ratios for schools in 1990 and 1991 Census
10		Table 3 Number of Pupils and Comparisons with 1990
11		Table 4 Pupils and Fees analysed by Areas
12		Table 5 Fee Ranges
13		Table 6 Average fees
14		Table 7 Contributions to fees
15		Table 8 Expenditure on Buildings and Equipment
16		Table 9 Children with parents overseas and/or in the Armed Forces
17		Table 10 Leavers to Higher Education
		Table 11 School sizes
18		Table 12 Boarding/Day ratio
		Table 13 Boy/Girl ratio
19	NOTES on Tables for Individual Associations	
20	HMC	Table 14A Number of Pupils and comparisons with 1990
21		Table 14B Pupils and Fees analysed by areas
22		Table 14C,D,E,F,G Staffing and Courses of Study
23		Table 14H,I,J Sources of Entry and Destinations of Leavers
24	SHMIS	Table 15A Number of Pupils and comparisons with 1990
25		Table 15B Pupils and Fees analysed by areas
26		Table 15C,D,E,F,G Staffing and Courses of Study
27		Table 15H,I,J Sources of Entry and Destinations of Leavers
28	GBA	Table 16A Number of Pupils and comparisons with 1990
29		Table 16B Pupils and Fees analysed by areas
30		Table 16C,D,E,F,G Staffing and Courses of Study
31		Table 16H,I,J Sources of Entry and Destinations of Leavers
32	GSA	Table 17A Number of Pupils and comparisons with 1990
33		Table 17B Pupils and Fees analysed by areas
34		Table 17C,D,E,F,G Staffing and Courses of Study
35		Table 17H,I,J Sources of Entry and Destinations of Leavers
36	GBGSA	Table 18A Number of Pupils and comparisons with 1990
37		Table 18B Pupils and Fees analysed by areas
38		Table 18C,D,E,F,G Staffing and Courses of Study
39		Table 18H,I,J Sources of Entry and Destinations of Leavers
40	IAPS	Table 19A Number of Pupils and comparisons with 1990
41		Table 19B Pupils and Fees analysed by areas
42		Table 19C,D,E Staffing
		Table 19H,I Sources of Entry and Destinations of Leavers
43	ISAI	Table 20A Number of Pupils and comparisons with 1990
44		Table 20B Pupils and Fees analysed by Areas
45		Table 20C,D,E,F,G Staffing and Courses of Study
46		Table 20H,I,J Sources of Entry and Destinations of Leavers

INDEPENDENT SCHOOLS INFORMATION SERVICE

Statistical Survey of Independent Schools - January 1991

These tables contain information derived from a survey carried out in January 1991 among members of:-

- HMC - predominantly boys' schools whose heads are members of the Headmasters' Conference and whose governing bodies are members of GBA
- SHMIS - predominantly boys' schools whose heads are members of the Society of Headmasters & Headmistresses of Independent Schools and whose governing bodies are members of GBA
- GBA - predominantly boys' schools whose governing bodies are members of the Governing Bodies Association
- GSA - girls' schools whose heads are members of the Girls' Schools Association and whose governing bodies belong to GBGSA
- GBGSA - girls' schools whose governing bodies are members of the Governing Bodies of Girls' Schools Association
- LAPS - boys' and girls' schools whose heads are members of the Incorporated Association of Preparatory Schools
- ISAI - boys' and girls' schools whose heads are members of the Independent Schools Association Incorporated but not of any other Association

The information relates to January 1991, except that expenditure on buildings and equipment is for the financial year ending at various dates in 1990.

ISIS (Director: David Woodhead), 56 Buckingham Gate, London SW1E 6AG (Telephone 071-630 8793/4)

ISIS CENSUS 1991 INTRODUCTION

By David Woodhead, Director, National ISIS

Despite the worst economic recession for a decade, pupil numbers in independent schools have increased in the past year.

During and after the last recession in 1980-81, independent schools lost pupils. Fears that that experience would be repeated this year have not been realised. On the contrary, there are 3,079 more children in ISIS-member schools than a year ago. This is a rise of 0.7 per cent.

While the recession may have caused some children to be withdrawn from schools and the enrolment of others to be deferred pending an improvement in the economy, it has not been enough to reverse the overall upward trend which has been the single most notable feature of the independent sector for several years.

This year's increase is the eighth in succession to be recorded by the ISIS Census and thus extends what was already the longest period of continuous growth in independent school pupil numbers on record.

Census returns in January 1991 record 476,448 pupils attending the

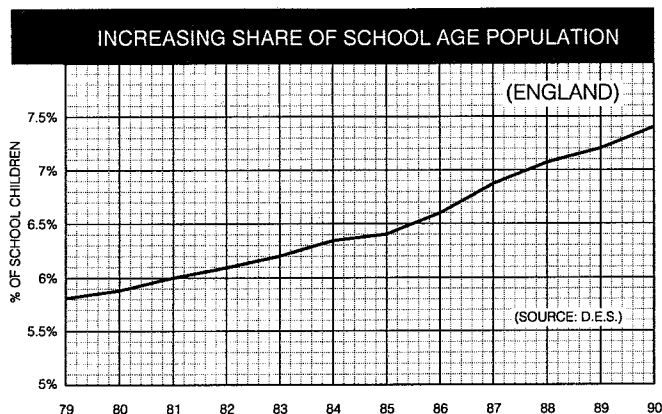
1,372 schools in the United Kingdom (and a few in Eire) which took part in the survey. (Table 1, page 8).

Comparisons, however, are made between the 1,358 schools which participated in both the 1991 and the 1990 surveys. In these schools there were 473,062 pupils aged between 2 and 19, compared with 469,983 a year ago. (Table 2, page 9).

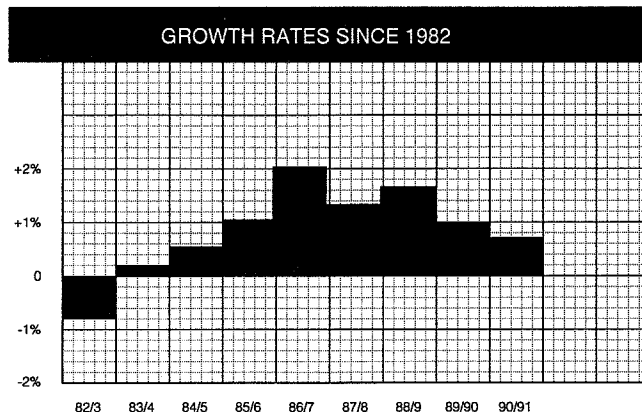
Eighty per cent of all independently-educated pupils are in ISIS-member schools. (Altogether there are nearly 2,500 independent schools in the United Kingdom, educating more than 600,000 children).

Graphs below show (1) the increasing proportion of children in independent schools in England since 1979, based on Department of Education and Science (DES) figures, and (2) growth rates in ISIS-member schools since 1982 (the first year our Census appeared in its present form).

1



2



DES statistics show that independent schools are educating a steadily rising proportion of the child population. This was 5.8 per cent in the late 1970s and is now 7.4 per cent overall. It varies between age groups and different parts of the British Isles. For example, 10 per cent of secondary school children and nearly 11 per cent of *all* children in the south-east are in the independent sector. Twenty per cent of sixth-formers (16-19 year-olds) are in independent schools.

Independent schools' increasing 'market share' has been accentuated by the overall drop in the number of children of school age nationally - a trend which is now ending. According to the DES, *maintained* sector secondary school rolls fell in 1989-90, the most recent year for which figures are available, by 1.1 per cent while primary rolls rose by 3.3 per cent. (Increases in the number of primary schoolchildren are now working through into the secondary schools and therefore reversing the decline in overall numbers).



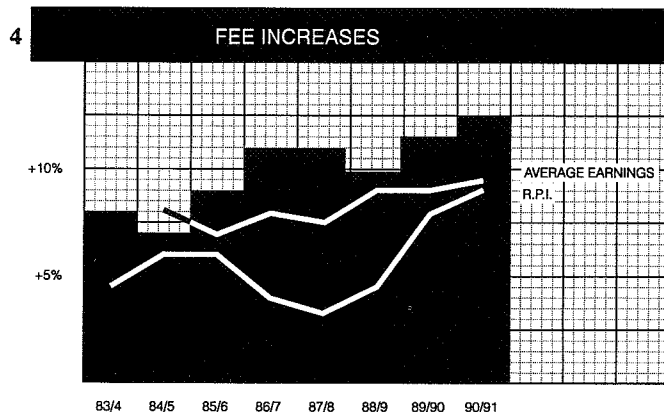
The third graph shows the ages of pupils at which numbers have grown or fallen between 1990 and 1991. This and Table 3, page 10, confirm the continuing strong demand for places for 2-7 year-olds in pre-prep departments. The picture is less satisfactory at the other end of the age range. As noted above, there is a drop nationally in the number of pupils of secondary school age. Last year this was

reflected in falling numbers between 12 and 16, but with a rise in the sixth form. This year the drop occurs between 14 and 18. It is the first time sixth-form numbers have fallen since 1985 and anecdotal evidence suggests that the recession may be a contributory factor at this level.

There are 6,362 more day boys and girls (1.7 per cent) than in 1990. The percentage rise among girls is again greater than for boys and confirms the rising proportion of girls, who now account for 45.7 per cent of pupils in ISIS schools.

Full boarders, however, have fallen overall by 4.0 per cent - boys down by 4.6 per cent and girls by 2.9 per cent. On the other hand, weekly boarding continues to gain ground; numbers have increased by 4.8 per cent. Weekly boarding may cover a range of different boarding arrangements; there is ample evidence that its flexibility is a particular attraction to working parents who want to see their children at week-ends and who know they are fully catered for academically and socially during the week, families who are experiencing boarding for the first time and those who gain a wider choice of schools by looking at this option.

The less welcome growth of school fees is tracked on the fourth graph. In 1990-91, they rose by 12.5 per cent, the highest we have recorded in a single year since 1982.



Parents are often puzzled about school fees rising by a substantially greater amount than the rate of inflation as measured by the retail prices index. The explanation is well known to those familiar with the economics of education but it bears repeating. Education is a labour and capital intensive activity. Maintained sector costs also tend to rise faster than the RPI but their costs are less visible than those of independent schools.

The major item in any school budget is teaching and non-teaching staff salaries. These account for up to 80 per cent of a day school's costs and up to 60 per cent in a boarding school. Average earnings generally and teachers' salaries specifically have run ahead of the RPI in recent years. In 1989-90 (April to March) the overall increase in teachers' pay nationally was 7.5 per cent, but this does not take account of incremental rises - which in an average school might add another 2 per cent to teacher costs - or of non-teaching staff costs. The rise in average earnings (1990-91) was 9.3 per cent. (Table 4 page 11 and Table 6 page 13).

Capital costs, too, have been particularly heavy in the past decade as schools have invested in improvements, in response to curriculum changes and parental demands.

Increases in school fees are therefore a reflection of:

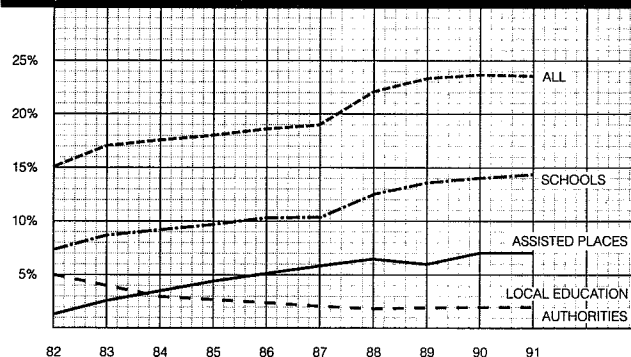
- * generous staffing of small classes, which is the reason for many parents choosing independent schools;
- * rising staff salaries and wage costs;
- * investment in updated and improved buildings, facilities and equipment;
- * general inflation measured by the RPI, which has been rising since 1988 and was 9.1 per cent in 1990-91, the highest since 1981. The gap between RPI and what might be called the SFI (school fee index) has narrowed in the last few years.

Table 2 shows that there has been a further improvement in staff:pupil ratios to 1:11.1 overall and 1:12.9 with the weighting for sixth-forms.

Help with fees maintains last year's high level. A total of 109,191 children are receiving assistance, representing 23.1 per cent of all children in our schools. Most of this help is given by the schools through bursaries and scholarships; 67,929 (14.3 per cent of all children) benefit in this way. The number of children holding DES assisted places has fallen slightly to 30,151, while places paid for by

5

PUPILS RECEIVING HELP WITH FEES

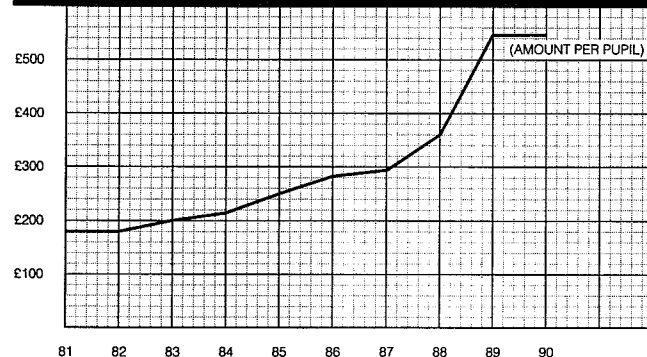


local education authorities have risen slightly to 7,595. These trends are traced on the fifth graph.

The sixth graph shows the amount spent per pupil by schools on buildings and equipment in each year since 1981. After an unprecedentedly steep rise in 1989, schools maintained their high level of investment at £543 per pupil in 1990. In that year schools

6

SPENDING ON BUILDINGS & EQUIPMENT



spent £257 million on new buildings and equipment, the same as in the previous year. (Table 8 page 15).

Last year we changed Table 9 (page 16) to record only the new pupils from overseas who had joined schools since the previous Census day. It is now possible to resume comparisons. The number of foreign pupils has increased slightly. Modest increases are recorded for children from Africa, the Middle East, Hong Kong and the remainder of the Far East. But the total number of overseas recruits has declined by 2.8 per cent because of a drop in the number of British pupils whose parents live abroad or serve in the armed forces.

Table 10 (page 17) records post A-level leavers only (not pupils over 15). Three associations - GSA, GBGSA and ISAI - include some schools which do not have sixth-forms and therefore do not offer A-level courses. Their numbers of A-level leavers need to be read with this in mind.

GENERAL AND ASSOCIATION TABLES

All the general tables and graphs are contained on pages 4 to 18. Those which follow (pages 20 to 46) relate to particular Associations of schools, indicated by the initials at the top of each page.

DUAL MEMBERSHIP

Some schools are members of more than one association. For the sake of clarity, these schools are recorded in the census under one association only. This does, however, produce distortions in the apparent size of associations. For example, the Society of Headmasters and Headmistresses of Independent Schools (SHMIS) appears as having only 46 members because the 19 schools which have dual membership with the Headmasters' Conference are shown in the HMC figures.

ACKNOWLEDGEMENTS

Only two of our 1,374 member schools failed to return their Census forms in time to be included in these statistics. I am grateful to the heads, deputy heads, bursars, secretaries and other members of staff who cooperated and the chairmen, president and secretaries of the

Associations listed on page three.

Julian Bewick and the Monkton Combe Computing Service worked long hours with great patience and care on this survey. They are to be congratulated on producing a document which is widely valued by schools, journalists, commentators, researchers, educationalists and others for the detailed information it provides on the major part of the independent sector. John Widdowson's advice was appreciated by school staff who needed help in completing their returns.

THE INDEPENDENT SECTOR

Figures for pupils at all independent schools in Great Britain, based on statistics from the Department of Education & Science, the Welsh Office and the Scottish Education Department, are available from National ISIS. Information for Scotland is available separately from ISIS Scotland, Floor 2/1, 11 Castle Street, Edinburgh EH2 3AH; telephone 031-220 2106.

TABLE 1

TOTAL NUMBERS OF SCHOOLS, BOARDING AND DAY PUPILS IN CENSUS

N.B. THIS TABLE SHOWS THE NUMBERS OF PUPILS IN ALL 1372 SCHOOLS WHICH TOOK PART IN THE 1991 CENSUS. 1378 SCHOOLS WERE INCLUDED IN THE 1990 CENSUS, SO TOTALS ON THIS PAGE SHOULD NOT BE COMPARED WITH THOSE FOR 1990.
SEE NOTE ON PAGE 6 ON MULTIPLE MEMBERSHIP OF ASSOCIATIONS.

			HMC	SHMIS	GRA	GSA	GBGSA	IAPS	ISAI	TOTAL
Number of schools in census			233	46	16	249	13	536	279	1,372
Number of member schools			233	46	16	249	13	536	281	1,374
Educational Charities			229	45	15	246	10	437	141	1,123
Limited Companies			0	0	0	2	0	40	57	99
Proprietary			2	0	0	0	1	57	79	139
PUPILS	FULL BOARDERS	Boys	34,521	5,207	1,662	31	4	14,130	2,204	57,759
		Girls	7,720	1,212	782	18,665	233	3,964	1,508	34,084
	WEEKLY BOARDERS	Boys	1,812	374	79	8		2,950	673	5,896
		Girls	357	96	30	3,042	128	1,050	361	5,064
	DAY	Boys	91,627	6,526	2,822	1,757	563	64,718	27,195	195,208
		Girls	19,252	2,779	1,564	91,918	3,699	30,099	29,126	178,437
	TOTAL	Boys	127,960	12,107	4,563	1,796	567	81,798	30,072	258,863
		Girls	27,329	4,087	2,376	113,625	4,060	35,113	30,995	217,585
	GRAND TOTAL		155,289	16,194	6,939	115,421	4,627	116,911	61,067	476,448

TABLE 2

NUMBER OF SCHOOLS, BOARDING AND DAY PUPILS, STAFF/PUPIL RATIOS

Note: Numbers for 1991 are printed in **BOLD** type,
Numbers for 1990, together with % changes, are printed below them.

			HMC	SHMIS	GBA	GSA	GBGSA	IAPS	ISAI	TOTAL	
Number of schools compared			232	45	15	249	12	532	273	1,358	
PUPILS	FULL BOARDERS	Boys	34,120	5,059	1,468	31	4	14,129	2,196	57,007	
			35,528	5,405	1,562	25	13	14,881	2,368	59,782	-4.64%
		Girls	7,639	1,122	637	18,665	183	3,964	1,502	33,712	
			7,380	1,137	674	19,617	210	4,131	1,565	34,714	-2.89%
	WEEKLY BOARDERS	Boys	1,812	370	79	8		2,948	673	5,890	
			1,761	339	44	5		2,886	582	5,617	+4.86%
		Girls	357	93	30	3,042	93	926	361	4,902	
			321	93	9	2,989	99	813	357	4,681	+4.72%
	DAY	Boys	91,558	6,462	2,661	1,757	563	64,273	26,790	194,064	
			91,297	6,378	2,607	1,693	522	62,457	26,494	191,448	+1.37%
		Girls	19,251	2,756	1,430	91,918	3,467	29,889	28,776	177,487	
			18,026	2,614	1,384	91,094	3,482	28,690	28,451	173,741	+2.16%
	TOTAL	Boys	127,490	11,891	4,208	1,796	567	81,350	29,659	256,961	
			128,586	12,122	4,213	1,723	535	80,224	29,444	256,847	+0.04%
		Girls	27,247	3,971	2,097	113,625	3,743	34,779	30,639	216,101	
			25,727	3,844	2,067	113,700	3,791	33,634	30,373	213,136	+1.39%
GRAND TOTAL			154,737	15,862	6,305	115,421	4,310	116,129	60,298	473,062	
			154,313	15,966	6,280	115,423	4,326	113,858	59,817	469,983	+0.7%
			+0.27%	-0.65%	+0.40%	-0.00%	-0.37%	+1.99%	+0.80%	+0.7%	
STAFF/PUPIL RATIO - raw			1:11.0	1:10.0	1: 9.8	1:10.8	1:11.1	1:11.4	1:11.8	1:11.1	
			1:11.3	1:10.1	1:10.0	1:11.0	1:11.0	1:11.4	1:12.1	1:11.3	
- weighted			1:14.4	1:12.3	1:11.9	1:12.7	1:12.6		1:12.4	1:12.9	
			1:14.8	1:12.3	1:12.1	1:12.9	1:12.5		1:12.7	1:13.1	

Note: For the weighted ratios, each sixth form pupil is counted as two.

TABLE 3

NUMBER OF PUPILS IN JANUARY 1991 AND CHANGES SINCE 1990

Figures for 1991 are printed in **BOLD**, those for 1990 and per cent changes are printed below

AGE ON 31 AUG 90	BOYS			GIRLS			TOTAL
	BOARDERS FULL	DAY WEEKLY	DAY	BOARDERS FULL	DAY WEEKLY	DAY	
2	0	0	1,262	0	0	1,355	2,617
	0	0	1,130	0	0	1,176	2,306
			+11.7%			+15.2%	+13.5%
3	0	0	4,337	0	0	4,430	8,767
	0	0	4,044	0	0	4,102	8,146
			+7.2%			+8.0%	+7.6%
4	6	0	7,841	4	0	7,745	15,586
	0	0	7,512	0	0	7,279	14,791
			+4.4%			+6.4%	+5.4%
5	13	3	8,480	5	4	8,251	16,736
	4	0	8,141	4	1	7,986	16,136
			+4.2%			+3.3%	+3.8%
6	58	23	8,800	24	10	8,508	17,423
	54	17	8,381	49	7	8,119	16,627
			+35.3%			+42.9%	+4.8%
7	442	116	10,828	184	45	9,770	21,385
	544	101	10,699	204	51	9,725	21,324
			+14.9%			+11.8%	+0.5%
8	1,536	273	12,211	524	155	10,849	25,548
	1,716	272	12,375	583	123	10,940	26,009
			+10.5%			+26.0%	+0.8%
9	2,267	436	13,477	945	235	11,862	29,222
	2,501	449	13,322	1,056	214	11,742	29,284
			-2.9%			+9.8%	+1.0%
10	3,144	620	14,359	1,456	371	12,493	32,443
	3,377	612	13,968	1,648	365	12,185	32,155
			+6.9%			+1.6%	+2.5%
11	4,570	909	19,400	3,156	674	17,161	45,870
	4,595	837	18,435	3,125	599	16,248	43,839
			+0.5%			+12.5%	+5.6%
12	5,336	1,078	17,982	3,525	629	16,361	44,911
	5,490	1,057	17,709	3,643	574	15,935	44,408
			+2.8%			+9.6%	+2.7%
13	7,214	555	16,915	4,117	535	16,015	45,351
	7,435	532	16,651	4,204	561	15,620	45,003
			+3.0%			-4.6%	+2.5%
14	7,713	510	16,422	4,410	599	15,617	45,271
	8,370	512	16,697	4,750	570	15,611	46,510
			-7.8%			+5.1%	+0.0%
15	8,409	588	16,496	4,899	672	15,409	46,473
	8,826	502	16,535	4,809	665	15,698	47,035
			+4.7%			+1.1%	-1.8%
16	8,044	420	12,955	5,232	501	11,357	38,509
	8,331	359	13,259	5,431	503	11,380	39,263
			+3.4%			-0.4%	-0.2%
17	7,100	300	11,507	4,547	426	9,661	33,541
	7,320	336	11,636	4,539	418	9,352	33,601
			-10.7%			+1.9%	+3.3%
18	1,027	52	744	611	45	566	3,045
	1,090	30	901	603	30	570	3,224
			+5.8%			+50.0%	-0.7%
19	128	7	48	73	1	77	334
	129	1	53	66	0	73	322
			+0.8%			+5.5%	+3.7%
TOTAL	57,007	5,890	194,064	33,712	4,902	177,487	473,062
	59,782	5,617	191,448	34,714	4,681	173,741	469,983
			+4.6%			+4.7%	+2.2%

NUMBERS AND FEES BY AREAS

TABLE 4

ANALYSIS OF PUPIL NUMBERS AND AVERAGE TERMLY FEES
(PERCENT CHANGES ARE BASED ON 1990 FIGURES)

AREA	No. of Schools	BOYS			GIRLS			TOTAL		Boarding Fee	Weekly Boarding Fee	Day Fee Boarding Schools	Day Fee Day Schools
		Boarding Full	Weekly	Day	Boarding Full	Weekly	Day	Boarding Full	Weekly				
Scotland	55	2996	88	10495	1919	124	10389	4915	212	20884	£2272	£2131	£1284
		-3.4%	-7.4%	-2.4%	-2.0%	+20.4%	+1.9%	-2.9%	+7.1%	-0.3%	+11.0%	+11.8%	+11.9%
The North	196	5449	391	39580	3387	366	32552	8836	757	72132	£2097	£1839	£1261
		-5.0%	-8.0%	+0.5%	-8.5%	+31.2%	+2.8%	-6.4%	+7.5%	+1.6%	+12.6%	+12.3%	+12.8%
Wales	30	1203	107	2862	727	119	3144	1930	226	6006	£2058	£1850	£1331
		-5.9%	-17.7%	-0.1%	-0.7%	-11.9%	+0.8%	-4.0%	-14.7%	+0.4%	+11.0%	+11.5%	+12.0%
W Midlands	148	6901	672	18734	4323	693	17628	11224	1365	36362	£2217	£1951	£1439
		-2.4%	-6.8%	+1.8%	-2.1%	+1.5%	+3.5%	-2.3%	-2.8%	+2.6%	+12.3%	+11.4%	+13.0%
E Midlands	166	8152	712	21013	4429	959	20959	12581	1671	41972	£2254	£1902	£1354
		-3.3%	+0.6%	+1.1%	-1.2%	+1.4%	+1.8%	-2.6%	+1.0%	+1.4%	+12.1%	+12.1%	+12.5%
East Anglia	93	3247	521	12574	1929	314	11490	5176	835	24064	£2223	£1987	£1403
		-11.2%	+23.5%	+3.6%	-4.1%	+25.6%	+3.6%	-8.7%	+24.3%	+3.6%	+11.3%	+10.8%	+11.3%
South & West	151	10117	653	16272	6659	806	15178	16776	1459	31450	£2219	£1953	£1342
		-4.2%	+11.4%	+1.2%	-1.1%	-5.8%	+1.9%	-3.0%	+1.2%	+1.5%	+12.3%	+12.1%	+12.7%
Greater London	166	1612	496	31431	243	82	28721	1855	578	60152	£2230	£2351	£1493
		-0.2%	-1.2%	+0.7%	-21.4%	+17.1%	+0.9%	-3.6%	+1.0%	+0.8%	+14.2%	+14.4%	+13.7%
South East	339	16823	2152	34811	9875	1410	35127	26698	3562	69938	£2300	£2111	£1499
		-5.4%	+11.7%	+2.6%	-2.7%	+5.5%	+2.0%	-4.4%	+9.2%	+2.3%	+12.6%	+12.0%	+13.0%
Ireland	14	507	98	6292	221	29	2299	728	127	8591	£1579	£1552	£837
		-8.2%	-3.0%	+6.4%	+0.5%	+26.1%	+1.7%	-5.7%	+2.4%	+5.1%	+8.4%	+6.0%	+8.4%
All	1358	57007	5890	194064	33712	4902	177487	90719	10792	371551	£2224	£1994	£1391
		-4.6%	+4.9%	+1.4%	-2.9%	+4.7%	+2.2%	-4.0%	+4.8%	+1.7%	+12.3%	+11.9%	+12.6%

FEES

TABLE 5

Numbers of schools whose maximum termly fees are within £30 of the figures shown

	HMC	SHMIS	GSA	GBGSA	IAFS	ISAI
	BOARD DAY	BOARD DAY	BOARD DAY	BOARD DAY	BOARD DAY	BOARD DAY
£300						
£360						2
£420						2
£480						5
£540						11
£600	1		1		1	13
£660	1					25
£720	2				2	16
£780	3	2			1	26
£840	10	1			1	26
£900	9		1		3	31
£960	5				2	24
£1020	17	2	2		1	17
£1080	14	3	2		3	14
£1140	11		1		1	8
£1200	9	8	1		1	12
£1260	12	5	20		2	3
£1320	5	4	10		1	4
£1380	6	3	11		2	2
£1440	1	1	8		1	4
£1500	1	1	14		8	1
£1560	1	1	11		3	1
£1620	1	1	6		9	2
£1680	6	1	8		19	6
£1740	1	1	5		11	2
£1800	2	5	4		16	4
£1860	2	13	2		17	6
£1920	1	10	5		28	1
£1980	6	8	1		33	5
£2040	7	2	1		27	1
£2100	4	5	1		31	2
£2160	8	10	14		24	1
£2220	7	4	5		17	3
£2280	7	4	2		16	2
£2340	5	3	8		6	2
£2400	3	4	9		2	1
£2460	3	3	10		2	1
£2520	8	1	10		2	2
£2580	9	1	6		2	1
£2640	5	1	6		1	1
£2700	5	1	9			
£2760	4	2	5			
£2820	4		3			
£2880	20	3	1			
£2940	8	1	2			
£3000	4		2			
£3060	8	1	1			
£3120	10		3			
£3180	4					
£3240	6					
£3300	2					
£3360	1					
£3420	1					
£3480	1	1				
£3540						
£3600	1					

This table shows the spread of fees for almost all schools which completed the Census. It omits a few schools which, due to exceptional circumstances (e.g. they are specialist schools), have untypically high or low fees.

TABLE 6

INFLATION RATES, EARNINGS INCREASES, TEACHERS' AWARDS AND AVERAGE TERMLY FEES (JANUARY TERM 1991)

YEAR	INFLATION	EARNINGS	BURNHAM/ BAKER		HMC		SHMIS		GBA		GSA		GBGSA		IAPS		ISAI		ALL	
			BOARD	DAY	BOARD	DAY	BOARD	DAY	BOARD	DAY	BOARD	DAY	BOARD	DAY	BOARD	DAY	BOARD	DAY	BOARD	DAY
1986			1531	875	1431	871	1335	663	1340	692					1171	688	1171	511		
	3.9%	8.0%	7.3%	10.8%	10.5%	13.2%	8.6%	29.3%	24.4%	13.1%	11.4%				9.9%	11.0%	13.1%	12.5%		
1987			1697	967	1620	946	1726	825	1515	771					1287	764	1324	575		
	3.3%	7.7%	16.4%	12.1%	11.9%	9.3%	8.8%	3.9%	12.5%	12.5%	12.5%				11.9%	11.8%	7.8%	13.0%		
1988			1902	1082	1770	1029	1793	928	1705	867					1440	854	1427	650		
	4.9%	9.4%	6.3%	9.9%	10.2%	10.5%	10.5%	4.7%	8.4%	10.9%	11.8%				9.0%	10.1%	9.4%	10.8%		
1989			2090	1192	1955	1137	1878	1006	1890	969	1699	840	1570	940	1561	720				
	7.7%	9.1%	7.8%	11.3%	11.7%	8.5%	6.6%	9.2%	13.6%	11.9%	11.9%	4.7%	7.1%	11.4%	11.9%	14.3%	13.7%			
1990			2326	1331	2121	1212	2051	1143	2115	1084	1779	900	1749	1052	1784	819	1981	1062		
	9.1%	9.3%	7.5%	12.8%	12.5%	13.2%	12.5%	10.5%	12.9%	12.8%	12.7%	16.2%	9.0%	11.9%	13.1%	9.2%	12.9%	12.3%	12.8%	
1991			2623	1497	2400	1363	2267	1290	2386	1222	2067	981	1958	1190	1949	925	2224	1198		

NOTES

- i) Inflation rates are from January to January, based on the increase in the Retail Prices Index.
- ii) Earnings figures are the increases in average earnings, January to January. (Department of Employment).
- iii) The latest Burnham/Baker figures are the average increases in teachers' pay, April 1989 to March 1990.
- iv) A table showing the range of maximum termly fees is printed on page 12.

TABLE 7

NUMBER OF PUPILS RECEIVING CONTRIBUTIONS TO FEES (JANUARY 1991)

Numbers for 1991 are printed in **BOLD** type, numbers for 1990 are printed below them.

	HMC	SHMIS	GBA	GSA	GBGSA	IAPS	ISAI	TOTAL
from Local Education Authorities	5,436	734	83	514	10	346	472	7,595
	5,356	737	100	565	12	262	521	7,553
from the school	26,024	4,028	1,230	14,177	566	15,113	6,791	67,929
	25,939	3,882	1,450	14,779	610	14,660	6,366	67,686
from Government Assisted Places Scheme	19,102	647	338	9,339	121	594	10	30,151
	19,180	590	371	9,531	118	485	122	30,397
from all other known sources	1,523	204	21	866	12	627	263	3,516
	1,608	238	39	817	24	700	273	3,699
TOTALS	52,085	5,613	1,672	24,896	709	16,680	7,536	109,191
	52,083	5,447	1,960	25,692	764	16,107	7,282	109,335

TABLE 8

NEW BUILDINGS AND EQUIPMENT, 1990

Figures for 1990 are printed in **BOLD** type, those for 1989 are printed below them.

	HMC	SHMIS	GBA	GSA	GBGSA	IAPS	ISAI	TOTAL
Amount spent on new buildings								
Total (in millions of pounds)	80.9 81.8	7.2 6.2	3.4 3.6	37.8 40.7	0.2 0.4	34.7 39.1	8.3 10.7	172.4 182.6
Per Pupil (in pounds)	522 530	454 389	532 579	327 352	42 88	299 343	137 178	364 388
Amount spent on improvements to buildings and equipment								
Total (in millions of pounds)	44.2 39.4	3.2 3.3	1.6 1.4	17.8 14.4	0.3 0.4	13.0 12.6	4.7 3.5	84.7 74.8
Per Pupil (in pounds)	285 255	202 203	255 216	153 124	58 92	111 110	77 58	179 159
TOTAL								
Total (in millions of pounds)	125.1 121.2	10.4 9.5	5.0 5.0	55.5 55.1	0.4 0.8	47.7 51.6	12.9 14.2	257.1 257.3
Per Pupil (in pounds)	808 785	656 593	787 795	481 477	100 181	410 453	214 236	543 547

TABLE 9

NEW PUPILS WHOSE PARENTS LIVE OVERSEAS AND/OR ARE IN THE ARMED FORCES

These are new pupils who joined schools between Jan. 1990 and Jan. 1991.

(Numbers for 1991 are printed in **BOLD** type, those for 1990 are printed below them.)

	HMC	SHMIS	GBA	GSA	GBGSA	IAPS	ISAI	TOTAL
<u>British Pupils whose parents:</u>								
live abroad (excl. Armed Forces)	871	127	52	398	4	487	106	2,045
	966	126	56	465	5	575	95	2,288
serve in Armed Forces	727	203	31	444	2	938	404	2,749
	798	234	35	512	5	1,023	498	3,105
<u>Foreign Pupils whose permanent homes are in:</u>								
Africa	184	43	15	159	5	119	104	629
	206	59	19	137	10	108	64	603
U.S.A.	109	15	2	51	3	95	398	673
	96	13	10	53	9	79	429	689
Canada	24	4	0	10	5	9	41	93
	23	4	0	14	0	21	49	111
Central and S America and Caribbean	47	14	6	64	2	24	22	179
	46	10	19	55	0	33	33	196
Middle East	86	40	8	47	0	49	67	297
	82	19	7	40	1	42	56	247
Hong Kong	455	131	47	334	10	76	158	1,211
	406	143	50	292	17	64	151	1,123
Remainder of Far East	339	76	35	265	8	137	151	1,011
	276	64	47	246	9	135	231	1,008
Australasia	43	2	6	15	2	22	31	121
	28	16	0	29	2	41	27	143
Europe(excl.U.K.)	516	130	41	271	16	247	261	1,482
	453	118	49	367	14	242	315	1,558
Total Foreign Pupils	1,803	455	160	1,216	51	778	1,233	5,696
	1,616	446	201	1,233	62	765	1,355	5,678
<u>Total new British and Foreign Pupils whose parents live overseas (excl. Armed Forces.)</u>								
	2,674	582	212	1,614	55	1,265	1,339	7,741
	2,582	572	257	1,698	67	1,340	1,450	7,966

TABLE 10

POST A-LEVEL LEAVERS

	HMC	SHMIS	GSA	GBGSA	IAPS	GBGSA	ISAI
Post A-level Leavers *	23,050	1,561	613	9,496	240	924	
% to Higher Education	80	69	65	78	65	72	
% to University	59	37	46	55	40	37	
% of University entrants to:							
Arts	36	29	26	47	45	33	
Science	29	40	34	30	32	40	
Engineering/Technology	14	16	12	5	14	12	
Social Science	22	15	28	17	9	15	

* Note - GSA, GBGSA and ISAI include a significant number of schools which do not have sixth forms; pre A-level leavers do not appear in this table.

TABLE 11

NUMBER OF SCHOOLS

SCHOOL SIZE (PUPILS)	HMC	SHMIS	GSA	GBGSA	IAPS	ISAI
0 - 50					1	8
50 - 100					40	20
100 - 150	1	1	2	1	87	73
150 - 200		2	18	2	140	52
200 - 250	2	8	17		103	46
250 - 300	8	7	1	20	82	32
300 - 350	17	12	3	28	35	15
350 - 400	17	3	29	1	22	10
400 - 450	15	3	16	1	15	6
450 - 500	24		1	21	3	6
500 - 550	8	4	1	19	2	2
550 - 600	21	3	1	15	4	4
600 - 650	15	2	1	9	1	1
650 - 700	19	1	14	7	2	1
700 - 750	11		6		1	
750 - 800	10		4			
800 - 850	14		4			
850 - 900	9	1	4			1
900 - 950	8		5			1
950 - 1000	8		3			
1000 - 1050	3		2			
1050 - 1100	3		2			
1100 - 1150	5		3			
1150 - 1200	4				1	1
1200 - 1250	1	1				
1250 - 1300	1					
1300 - 1350						
1350 - 1400	1					
1400 - 1450	3					
1450 - 1500						
1500 - 1550						
1550 - 1600	1					
1600 - 1650						
1650 - 1700	1					
1700 - 1750						
1750 - 1800						
1800 - 1850						
1850 - 1900						
1900 - 1950	1					
1950 - 2000						
2000 - 2050						
2050 - 2100						
2100 - 2150	1					
2150 - 2200	1					
2200 - 2250						
2250 - 2300						

TABLE 12

BOARDING/DAY RATIO

		NUMBER OF SCHOOLS						
		HMC	SHMIS	GBA	GSA	GBGSA	IAPS	ISAI
% BOARDERS								
0 - 5	76	6	4	121	7	235	215	
5 - 10	15	2		9	2	29	6	
10 - 15	13	3	3	8		25	5	
15 - 20	8			10		34	8	
20 - 25	5	3	1	8	1	34	4	
25 - 30	8			4	1	24	4	
30 - 35	4	2		6		20	3	
35 - 40	6	1		9		19	3	
40 - 45	7	1	2	8		13	5	
45 - 50	8	5		5	1	15	3	
50 - 55	3	2	1	8	1	11	4	
55 - 60	5	3		4		7	2	
60 - 65	7	2	1	4		8	1	
65 - 70	4	1	1	8		9	2	
70 - 75	7	4	1	7		13	2	
75 - 80	12	4	1	6		6	6	
80 - 85	13			2		6	1	
85 - 90	6	2		7		7	1	
90 - 95	7		1	5		7	2	
95 - 100	19	5		10		14	2	

TABLE 13

BOY/GIRL RATIO

		NUMBER OF SCHOOLS						
		HMC	SHMIS	GBA	GSA	GBGSA	IAPS	ISAI
% BOYS								
0 - 5				1	224	9	38	35
5 - 10					13	1	10	9
10 - 15					8		8	9
15 - 20					2		5	4
20 - 25					1		9	9
25 - 30							8	2
30 - 35			1		1	1	6	6
35 - 40		1					1	8
40 - 45		2	1			1	7	14
45 - 50		9	3	2			12	26
50 - 55		16	2	3			27	41
55 - 60		14	9	2			41	27
60 - 65		18	3	1			50	21
65 - 70		14	3				44	12
70 - 75		6	1	1			31	10
75 - 80		3	3				16	4
80 - 85		16		1			12	3
85 - 90		24	1				10	1
90 - 95		30	3	1			15	4
95 - 100		80	16	4			179	32

NOTES ON TABLES FOR INDIVIDUAL ASSOCIATIONS

Tables on the following pages show changes that occurred between January 1990 and January 1991.

In order that fair comparisons can be made, only those schools which completed the census in BOTH years have figures included in the tables.

A few schools changed the associations to which they belong during the year between the two census days. Their figures are included in tables for their current associations.

Age ranges for schools in England, Wales and Ireland are calculated using 1st September as a base. Those in Scotland use 1st January.

Tables 14A to 20A show numbers of pupils in the schools. Current numbers are shown in bold print, with last year's figures printed below. Percentage changes are printed as the third line of each group of three lines. In cases of large percentage change, it is wise to look at the figures above to see if the change is significant.

TABLES 14B to 20B show the numbers of pupils and the average fees by areas. A blank entry in a fees or numbers column indicates that there is no school of the relevant category in the area. A blank in the per cent change row means there is no significant change.

TABLES 14C, D and E to 20C, D and E deal with staffing.

TABLES 14F and G to 20F and G deal with numbers and courses of study of sixth form pupils.

TABLES 14H, I and J to 20H, I and J show the sources of entry and destination of leavers. Proportions shown in each category are believed to be accurate, but total numbers are higher than those shown. These tables are amongst the most difficult for schools to complete accurately as sources and destinations are not always known.

NUMBER OF PUPILS

TABLE 14A

NUMBER OF PUPILS IN JANUARY 1991 AND CHANGES SINCE 1990

Figures for 1991 are printed in **BOLD**, those for 1990 and per cent changes are printed below

AGE ON 31 AUG 90	BOYS		GIRLS		TOTAL	
	BOARDS FULL	DAY WEEKLY	BOARDS FULL	DAY WEEKLY	DAY	
2	0	0	0	0	0	18
3	0	0	0	0	0	0
4	0	0	0	0	0	0
5	0	0	0	0	0	0
6	0	0	0	0	0	0
7	1	0	3	0	0	0
8	3	2	4	1	0	0
9	53	2	15	1	0	0
10	155	17	43	6	0	0
11	725	75	237	20	0	0
12	1,134	89	319	13	0	0
13	5,435	311	888	29	0	0
14	6,188	321	932	47	0	0
15	6,639	379	1,103	47	0	0
16	6,936	336	951	48	0	0
17	6,148	254	1,047	87	0	0
18	799	37	192	14	0	0
19	83	7	11	0	0	0
TOTAL	34,120	1,812	7,639	357	0	0

NUMBERS AND FEES BY AREAS

TABLE 14B

ANALYSIS OF PUPIL NUMBERS AND AVERAGE TERMLY FEES
(PERCENT CHANGES ARE BASED ON 1990 FIGURES)

AREA	No. of Schools	BOYS			GIRLS			TOTAL			Boarding Fee	Weekly Boarding Fee	Day Fee Boarding Schools	Day Fee Day Schools
		Boarding Full	Weekly	Day	Boarding Full	Weekly	Day	Boarding Full	Weekly	Day				
Scotland	18	2036	8	8312	749	8	4250	2785	16	12562	£2555	£2256	£1409	£931
		-2.8%	+60.0%	-3.6%	+2.2%	+300.0%	+4.1%	-1.5%	+128.6%	-1.1%	+11.7%	+11.5%	+11.5%	+3.3%
The North	44	3230	100	25360	725	34	3686	3955	134	29046	£2574	£2119	£1623	£936
		-5.0%	-25.4%	-0.3%	-6.1%	-17.1%	+12.9%	-5.2%	-23.4%	+1.2%	+12.9%	+11.2%	+12.6%	+10.2%
Wales	4	710		604	153		73	863		677	£2148	£2033	£1496	
		-7.1%		+4.1%	+17.7%		-2.7%	-3.5%		+3.4%	+10.8%	+8.9%	+12.7%	
W Midlands	26	4370	97	8328	988	36	2559	5358	133	10887	£2804	£2679	£1840	£1029
		-2.1%	-3.0%	+1.5%	+0.1%	+80.0%	+2.4%	-1.7%	+10.8%	+1.7%	+12.7%	+11.7%	+13.4%	+13.6%
E Midlands	24	5043	233	8396	890	32	723	5933	265	9119	£2683	£2048	£1681	£1232
		-3.7%	+5.4%	-0.8%	+20.1%	-15.8%	+2.1%	-0.7%	+2.3%	-0.6%	+12.6%	+4.3%	+13.0%	+9.2%
East Anglia	14	1486	105	4291	525	50	1592	2011	155	5883	£2501	£2302	£1643	£1226
		-8.2%	+1.9%	+1.1%	+4.8%	-5.7%	+12.5%	-5.1%	-0.6%	+3.9%	+11.5%	+11.0%	+11.2%	+15.4%
South & West	30	5914	117	7585	1578	67	1877	7492	184	9462	£2540	£2393	£1570	£1281
		-4.1%	+19.4%	+0.5%	+2.1%	+21.8%	+9.0%	-2.8%	+20.3%	+2.0%	+12.6%	+13.3%	+11.9%	+15.3%
Greater London	23	1257	364	14785	37	27	865	1294	391	15650	£2868	£2925	£1749	£1328
		-1.0%	-0.8%	+0.2%	-7.5%	-3.6%	+7.6%	-1.2%	-1.0%	+0.6%	+15.6%	+15.6%	+14.2%	+13.2%
South East	41	9683	747	8487	1824	101	1768	11507	848	10255	£2769	£2429	£1910	£1192
		-4.1%	+9.1%	+2.2%	+3.6%	+21.7%	+8.4%	-2.9%	+10.4%	+3.2%	+13.4%	+13.0%	+13.8%	+12.1%
Ireland	8	391	41	5410	170	2	1858	561	43	7268	£1678	£1793	£859	£780
		-6.7%	-14.6%	+5.8%	-0.6%	+100.0%	+2.0%	-4.9%	-12.2%	+4.8%	+11.1%	+5.3%	+10.4%	+12.1%
All	232	34120	1812	91558	7639	357	19251	41759	2169	110809	£2623	£2356	£1678	£1079
		-4.0%	+2.9%	+0.3%	+3.5%	+11.2%	+6.8%	-2.7%	+4.2%	+1.4%	+12.8%	+11.6%	+12.8%	+11.2%

TABLE 14C : Full Time Staff

	Graduates			Non-Graduates		TOTAL
	Maths	Science	Other	Qualified	Non-Qualified	
Men	1,260	2,515	6,458	633	57	10,923
Women	227	347	1,493	425	9	2,501

TABLE 14D : Part Time Staff

	Graduates		Non-Graduates		TOTAL
	Men	Women	Men	Women	
Number	362	834	150	355	1,701
Aggregate number of hours per week	3,694	8,837	1,345	3,401	17,277

STAFFING

TABLE 14E : Full Time Staff Changes

NUMBER	Coming from	Going to
Independent Schools	492	419
Maintained Schools	357	106
University, Polytechnic or Training College	297	52
Industry, etc.	58	74
Other (incl. Retirement)	135	444
TOTAL	1,339	1,095

TABLE 14F : Number of Sixth Form Pupils

Number of Pupils who have completed their GCSE or (in Scotland) their Standard Grades. Pupils who are re-taking some of these exams are included. Each first and second year sixth form pupil is included once.			
	Boys	Girls	TOTAL
Number on A-level or (in Scotland) Higher Grade or CSYS Courses.	36,001	9,751	45,752
NUMBER on CSE/GCSE/Standard Grade re-take Courses.	1,548	179	1,727
Number on other Courses.	253	78	331
TOTAL	37,802	10,008	47,810

COURSES OF STUDY

TABLE 14G :

Sixth Form Pupils Analysed by Course of Study

Each Sixth form pupil is included once for each A-level or SCSYS course being studied (e.g. a pupil taking three A-level courses is counted three times.)

AS-level courses are counted at the rate 2 AS-level = 1 A-level and Scottish Higher Grade courses at the rate of 3 Highers = 2 A-levels.

	Boys	Girls	TOTAL
Arts	17,920	5,675	23,595
Classics	3,216	691	3,907
English	10,253	4,595	14,848
Mathematics	16,918	2,889	19,807
Modern Languages	9,378	4,399	13,777
Science/Technology	31,620	6,214	37,834
Social Science	22,238	5,016	27,254
TOTAL	111,543	29,479	141,022

SOURCES OF ENTRY DESTINATION OF LEAVERS

TABLE 14H : Sources of Entry

		From Another School		From Overseas		Other	TOTAL
		Indep.	Maint.	Expatriate	Foreign		
BOYS	From Pre-Prep/Nursery/No School	248	217	1	2	359	827
	From Prep/Primary School	11,444	6,273	241	377	36	18,371
	From Senior School (Pre GCSE)	1,001	948	98	418	13	2,478
	From Senior School (Post GCSE)	541	628	66	525	18	1,778
GIRLS	From Pre-Prep/Nursery/No School	105	102	4	18	187	416
	From Prep/Primary School	1,392	1,436	74	51	8	2,961
	From Senior School (Pre GCSE)	444	387	54	115	7	1,007
	From Senior School (Post GCSE)	1,839	755	69	226	13	2,902
TOTAL		17,014	10,746	607	1,732	641	30,740

TABLE 14J : Destination of leavers who have sat A-level, SCSYS or Scottish Higher exams.

		Boys	Girls	TOTAL	
Pupils who left to take Higher Education Courses in the U.K. or Overseas	Entrants to Universities, Including Deferred Entry	Arts	3,598	1,274	4,872
		Science	3,208	731	3,939
		Engineering/Technology	1,735	121	1,856
		Social Science	2,372	556	2,928
	Degree Courses at Polytechnic	Arts	685	290	975
		Science	428	84	512
		Engineering/Technology	469	33	502
		Social Science	998	264	1,262
	All other H.E. Courses	Arts	493	248	741
		Science	188	52	240
		Engineering/Technology	148	16	164
		Social Science	241	106	347
Pupils who left to continue Secondary Education elsewhere		To another Indep. School	753	196	949
		To a Maintained School	558	142	700
Other Pupils who left	For Further Education or Training	473	192	665	
	For Employment	949	169	1,118	
	Others	1,045	235	1,280	
TOTAL		18,341	4,709	23,050	

TABLE 14I : Destination of leavers who have not sat A-level, SCSYS or Scottish Higher exams.

		To Another School			To Further Education	Employment	Other	TOTAL
		Indep.	I.E.A.	Overseas				
BOYS	Leaving at end of Pre-Prep	27	37	4	0	0	5	73
	Leaving at end of Prep	324	196	38	20	0	19	597
	Leaving immediately after GCSE	374	1,032	138	1,362	282	199	3,387
	Others	476	548	285	330	84	190	1,913
GIRLS	Leaving at end of Pre-Prep	8	7	1	1	0	10	27
	Leaving at end of Prep	26	43	13	5	0	5	92
	Leaving immediately after GCSE	143	150	50	226	37	26	632
	Others	90	121	68	80	17	36	412
TOTAL		1,468	2,134	597	2,024	420	490	7,133

NUMBER OF PUPILS

TABLE 15A

NUMBER OF PUPILS IN JANUARY 1991 AND CHANGES SINCE 1990

Figures for 1991 are printed in **BOLD**, those for 1990 and per cent changes are printed below

AGE ON 31 AUG 90	BOYS			GIRLS			TOTAL
	BOARDERS FULL	WEEKLY	DAY	BOARDERS FULL	WEEKLY	DAY	
2	0	0	9	0	0	2	11
	0	0	+12.5%	0	0	+100.0%	+22.2%
3	0	0	39	0	0	27	66
	0	0	38	0	0	28	66
	0	0	+2.6%	0	0	-3.6%	
4	0	0	62	0	0	56	118
	0	0	76	0	0	52	128
	0	0	-18.4%	0	0	+7.7%	-7.8%
5	0	0	62	0	0	36	98
	0	0	69	0	0	57	126
	0	0	-10.1%	0	0	-36.8%	-22.2%
6	1	0	60	1	0	40	102
	0	1	76	0	0	58	135
	0	-100.0%	-21.1%	0	0	-31.0%	-24.4%
7	6	0	111	0	0	69	186
	4	0	95	4	0	69	172
	+50.0%	0	+16.8%	-100.0%	0	0	+8.1%
8	5	2	117	9	0	71	204
	22	3	126	6	1	84	242
	-77.3%	-33.3%	-7.1%	+50.0%	-100.0%	-15.5%	-15.7%
9	30	6	153	7	1	95	292
	25	6	202	8	0	73	314
	+20.0%	0	-24.3%	-12.5%	0	+30.1%	-7.0%
10	67	12	268	17	4	90	458
	62	8	275	31	1	95	472
	+8.1%	+50.0%	-2.5%	-45.2%	+300.0%	-5.3%	-3.0%
11	280	31	845	65	8	373	1,602
	235	38	730	53	3	319	1,378
	+19.1%	-18.4%	+15.8%	+22.6%	+166.7%	+16.9%	+16.3%
12	371	49	813	104	10	335	1,682
	432	34	812	97	14	336	1,725
	-14.1%	+44.1%	+0.1%	+7.2%	-28.6%	-0.3%	-2.5%
13	797	48	948	158	14	401	2,366
	767	53	918	168	14	348	2,268
	+3.9%	-9.4%	+3.3%	-6.0%	0	+15.2%	+4.3%
14	867	68	930	203	15	369	2,452
	1,041	63	964	204	14	320	2,606
	-16.7%	+7.9%	-3.5%	-0.5%	+7.1%	+15.3%	-5.9%
15	1,038	73	930	213	15	297	2,566
	1,136	70	935	189	19	320	2,669
	-8.6%	+4.3%	-0.5%	+12.7%	-21.1%	-7.2%	-3.9%
16	795	53	622	175	12	263	1,920
	896	35	555	183	13	247	1,929
	-11.3%	+51.4%	+12.1%	-4.4%	-7.7%	+6.5%	-0.5%
17	645	21	449	143	14	214	1,486
	622	24	454	161	11	187	1,459
	+3.7%	-12.5%	-1.1%	-11.2%	+27.3%	+14.4%	+1.9%
18	133	7	42	26	0	18	226
	144	4	41	30	3	20	242
	-7.6%	+75.0%	+2.4%	-13.3%	-100.0%	-10.0%	-6.6%
19	24	0	2	1	0	0	27
	19	0	4	3	0	0	26
	+26.3%	0	-50.0%	-66.7%	0	0	+3.8%
TOTAL	5,059	370	6,462	93	2,756	15,862	
	5,405	339	6,378	93	2,614	15,966	
	-6.4%	+9.1%	+1.3%	-1.3%	+5.4%	-0.7%	

NUMBERS AND FEES BY AREAS

TABLE 15B

ANALYSIS OF PUPIL NUMBERS AND AVERAGE TERMLY FEES
(PERCENT CHANGES ARE BASED ON 1990 FIGURES)

AREA	No. of Schools	BOYS			GIRLS			TOTAL			Boarding Fee	Weekly Boarding Fee	Day Fee Boarding Schools	Day Fee Day Schools
		Boarding Full	Weekly	Day	Boarding Full	Weekly	Day	Boarding Full	Weekly	Day				
Scotland	2	328		69	74		27	402		96	£2599		£1363	
		-4.7%		-2.8%	+29.8%		+22.7%	+0.2%		+3.2%	+20.0%		+12.3%	
The North	9	440	25	2059	274	15	1058	714	40	3117	£2033	£1991	£1111	£988
		-4.6%	-7.4%	+5.4%	-7.7%	-25.0%	+12.1%	-5.8%	-14.9%	+7.6%	+11.5%	+12.0%	+10.3%	+10.4%
Wales	3	211	43	427			255	211	43	682	£2395	£1935	£1555	£1170
		-5.0%	-2.3%	-4.3%			+2.8%	-5.0%	-2.3%	-1.7%	+10.0%	+12.2%	+4.6%	+9.4%
W Midlands	5	467	39	680	162	37	312	629	76	992	£2245	£2119	£1369	
		+1.3%	-26.4%	+0.3%	+0.6%	-5.1%	+10.2%	+1.1%	-17.4%	+3.2%	+12.9%	+9.1%	+15.3%	
E Midlands	4	697	38	176	76		24	773	38	200	£2961	£2877	£1798	
		-6.3%	-7.3%	+11.4%	+5.6%		+26.3%	-5.3%	-7.3%	+13.0%	+15.1%	+16.5%	+14.2%	
East Anglia	3	648		364	68		374	716		738	£2195		£1598	£1090
		-11.0%		+7.4%	+4.6%		+8.7%	-9.7%		+8.1%	+19.2%		+20.7%	+10.7%
South & West	6	1041	4	461	274		136	1315	4	597	£2481	£2395	£1401	
		-1.9%	-33.3%	+12.7%	-2.8%		+28.3%	-2.1%	-33.3%	+15.9%	+12.1%	+10.7%	+12.0%	
Greater London	3	85	31	549	96	17	119	181	48	668	£2986	£2390	£1684	£1040
			-18.4%	-21.7%	-6.8%	+30.8%	-41.1%	-3.7%	-5.9%	-26.0%	+12.5%	+12.5%	+12.5%	+16.9%
South East	9	1119	182	1398	88	22	127	1207	204	1525	£2450	£2304	£1487	£1185
		-12.4%	+49.2%	+4.0%	-4.3%	+15.8%	+0.8%	-11.9%	+44.7%	+3.7%	+12.6%	+12.6%	+13.4%	+11.8%
Ireland	1	23	8	279	10	2	324	33	10	603	£1457	£1457	£756	
		+9.5%		+0.4%	+25.0%		+1.2%	+13.8%		+0.8%	+7.7%	+7.7%	+10.0%	
All	45	5059	370	6462	1122	93	2756	6181	463	9218	£2400	£2182	£1411	£1077
		-6.4%	+9.1%	+1.3%	-1.3%		+5.4%	-5.5%	+7.2%	+2.5%	+13.2%	+11.7%	+12.6%	+11.6%

TABLE 15C : Full Time Staff

	Graduates			Non-Graduates		TOTAL
	Maths	Science	Other	Qualified	Non-Qualified	
Men	113	247	595	146	15	1,116
Women	33	39	209	98	19	398

TABLE 15D : Part Time Staff

	Graduates		Non-Graduates		TOTAL
	Men	Women	Men	Women	
Number	46	127	27	80	280
Aggregate number of hours per week	483	1,375	230	844	2,932

STAFFING

TABLE 15E : Full Time Staff Changes

NUMBER	Coming from	Going to
Independent Schools	46	47
Maintained Schools	65	20
University, Polytechnic or Training College	30	11
Industry, etc.	12	14
Other (incl. Retirement)	15	74
TOTAL	168	166

TABLE 15F : Number of Sixth Form Pupils

Number of Pupils who have completed their GCSE or (in Scotland) their Standard Grades. Pupils who are re-taking some of these exams are included. Each first and second year sixth form pupil is included once.			
	Boys	Girls	TOTAL
Number on A-level or (in Scotland) Higher Grade or CSYS Courses.	2,436	822	3,258
NUMBER on CSE/GCSE/Standard Grade re-take Courses.	271	59	330
Number on other Courses.	4	0	4
TOTAL	2,711	881	3,592

COURSES OF STUDY

TABLE 15G :

Sixth Form Pupils Analysed by Course of Study

Each Sixth form pupil is included once for each A-level or SCYS course being studied (e.g. a pupil taking three A-level courses is counted three times.)

AS-level courses are counted at the rate 2 AS-level = 1 A-level and Scottish Higher Grade courses at the rate of 3 Highers = 2 A-levels.

	Boys	Girls	TOTAL
Arts	1,098	484	1,582
Classics	40	20	60
English	501	309	810
Mathematics	973	224	1,197
Modern Languages	416	322	738
Science/Technology	2,187	561	2,748
Social Science	1,328	322	1,650
TOTAL	6,543	2,242	8,785

SOURCES OF ENTRY DESTINATION OF LEAVERS

TABLE 15H : Sources of Entry

		From Another School		From Overseas		Other	TOTAL
		Indep.	Maint.	Expatriate	Foreign		
BOYS	From Pre-Prep/Nursery/No School	10	5	0	2	39	56
	From Prep/Primary School	909	784	31	69	2	1,795
	From Senior School (Pre GCSE)	164	199	30	141	0	534
	From Senior School (Post GCSE)	54	36	4	72	1	167
GIRLS	From Pre-Prep/Nursery/No School	8	2	0	2	38	50
	From Prep/Primary School	238	336	8	25	3	610
	From Senior School (Pre GCSE)	82	78	20	69	0	249
	From Senior School (Post GCSE)	78	42	13	53	0	186
TOTAL		1,543	1,482	106	433	83	3,647

TABLE 15I : Destination of leavers who have not sat A-level, SCSYS or Scottish Higher exams.

		To Another School			To Further Education	Employment	Other	TOTAL
		Indep.	L.E.A.	Overseas				
BOYS	Leaving at end of Pre-Prep	2	16	0	0	0	0	18
	Leaving at end of Prep	24	52	9	1	0	1	87
	Leaving immediately after GCSE	60	205	45	438	130	46	924
	Others	82	160	96	108	35	29	510
GIRLS	Leaving at end of Pre-Prep	0	3	0	0	0	1	4
	Leaving at end of Prep	8	13	0	0	0	0	21
	Leaving immediately after GCSE	23	56	17	101	52	10	259
	Others	27	49	47	31	6	7	167
TOTAL		226	554	214	679	223	94	1,990

TABLE 15J : Destination of leavers who have sat A-level, SCSYS or Scottish Higher exams.

		Boys	Girls	TOTAL	
Pupils who left to take Higher Education Courses in the U.K. or Overseas	Entrants to Universities, Including Deferred Entry	Arts	94	75	169
		Science	182	54	236
		Engineering/Technology	89	4	93
		Social Science	55	30	85
	Degree Courses at Polytechnic	Arts	53	35	88
		Science	55	10	65
		Engineering/Technology	57	2	59
		Social Science	57	18	75
	All other H.E. Courses	Arts	67	39	106
		Science	30	8	38
		Engineering/Technology	20	0	20
		Social Science	28	16	44
Pupils who left to continue Secondary Education elsewhere	To another Indep. School	50	9	59	
	To a Maintained School	44	20	64	
Other Pupils who left	For Further Education or Training	81	35	116	
	For Employment	129	43	172	
	Others	46	26	72	
TOTAL		1,137	424	1,561	

NUMBER OF PUPILS

TABLE 16A

NUMBER OF PUPILS IN JANUARY 1991 AND CHANGES SINCE 1990

Figures for 1991 are printed in **BOLD**, those for 1990 and per cent changes are printed below

AGE ON 31 AUG 90	BOYS		GIRLS		TOTAL
	BOARDERS FULL	DAY WEEKLY	BOARDERS FULL	DAY WEEKLY	
2	0	0	0	0	15
	0	0	0	0	14
3	0	0	0	0	+7.1%
	0	0	0	0	33
	0	0	0	0	20
	0	0	0	0	+6.5%
4	0	0	0	0	71
	0	0	0	0	56
	0	0	0	0	+26.8%
5	0	0	0	0	77
	0	0	0	0	75
	0	0	0	0	+2.7%
6	0	0	1	0	94
	0	0	0	0	105
	0	0	0	0	-10.5%
7	1	0	1	0	37
	2	0	0	0	134
	-50.0%	+17.3%	0	0	133
8	3	0	0	0	+0.8%
	3	0	0	0	161
	0	109	0	0	155
	0	103	4	0	+3.9%
	0	+5.8%	-100.0%	1	238
9	7	0	9	2	69
	17	1	8	2	218
	-58.8%	-100.0%	+32.2%	-50.0%	+9.2%
10	31	2	9	4	72
	30	4	14	0	270
	+3.3%	-50.0%	+26.7%	0	240
11	64	8	26	2	+12.5%
	51	3	24	2	503
	+25.5%	+166.7%	+9.9%	+8.3%	144
12	69	11	303	8	497
	105	5	316	1	+9.0%
	-34.3%	+120.0%	-4.1%	+700.0%	152
13	235	14	347	1	569
	252	11	348	2	620
	-6.7%	+27.3%	-0.3%	+2.2%	160
14	281	19	345	2	858
	279	8	346	0	+24.0%
	+0.7%	+137.5%	-0.3%	-14.1%	901
15	281	12	346	7	911
	308	5	330	1	-5.6%
	-8.8%	+140.0%	+4.8%	+600.0%	169
16	257	7	195	4	915
	255	2	136	0	935
	+0.8%	+250.0%	-8.5%	+22.1%	+6.3%
17	189	5	154	1	774
	211	4	121	1	744
	-10.4%	+25.0%	+1.3%	-14.0%	+5.1%
18	44	1	14	0	+4.0%
	41	0	19	8	577
	+7.3%	0	-26.3%	+54.5%	599
19	6	0	1	0	-3.7%
	8	1	0	0	84
	-25.0%	-100.0%	-100.0%	0	79
TOTAL	1,468	79	2,661	30	+6.3%
	1,562	44	2,607	9	1
	-6.0%	+79.5%	+2.1%	+233.3%	10
					1,430
					6,305
					1,384
					6,280
					+0.4%

NUMBERS AND FEES BY AREAS

TABLE 16B

ANALYSIS OF PUPIL NUMBERS AND AVERAGE TERMLY FEES
(PERCENT CHANGES ARE BASED ON 1990 FIGURES)

AREA	No. of Schools	BOYS			GIRLS			TOTAL			Boarding Fee	Weekly Boarding Fee	Day Fee Boarding Schools	Day Fee Day Schools
		Boarding Full	Boarding Weekly	Day	Boarding Full	Boarding Weekly	Day	Boarding Full	Boarding Weekly	Day				
Scotland	2	81	7	245	31	6	248	112	13	493	£2235	£2275	£1206	
		+5.2%	-12.5%	+4.3%	-8.8%		-3.5%	+0.9%	-7.1%	+0.2%	+6.1%	+12.2%	+9.2%	
The North	1	17	3	93	4	2	92	21	5	185	£2281	£2009	£1058	
		-5.6%		+13.4%	-55.6%		+24.3%	-22.2%	+66.7%	+18.6%	+13.0%	+13.0%	+13.0%	
Wales	1	115	13	63	36	1	34	151	14	97	£2527	£2350	£1355	
		-14.8%	-35.0%	+40.0%	-12.2%		+25.9%	-14.2%	-33.3%	+34.7%	+12.0%	+13.3%	+12.0%	
E Midlands	2	246	35	232	184	15	142	430	50	374	£2533		£1367	
		-8.9%	+1650.0%	+4.0%	-20.3%	+650.0%	+2.9%	-14.2%	+1150.0%	+3.6%	+11.7%		+9.4%	
East Anglia	3	234	21	737	7	6	204	241	27	941	£2175	£2365	£1197	£1128
		-9.3%	+90.9%	-2.4%	+16.7%		+12.7%	-8.7%	+145.5%	+0.5%	+10.6%	+11.6%	+14.3%	+20.1%
South & West	2	585		249	375		122	960		371				£1484
		-1.0%		-0.8%	+6.2%		+5.2%	+1.7%		+1.1%				+15.6%
Greater London	2			247			580			827				£1453
				+3.8%			+0.5%			+1.5%				+12.6%
South East	2	190		795			8	190		803	£1992		£1200	
		-10.8%		+2.2%			-42.9%	-10.8%		+1.4%	+11.9%		+13.7%	
All	15	1468	79	2661	637	30	1430	2105	109	4091	£2267	£2249	£1235	£1400
		-6.0%	+79.5%	+2.1%	-5.5%	+233.3%	+3.3%	-5.9%	+105.7%	+2.5%	+10.5%	+12.4%	+11.8%	+15.0%

TABLE 16C : Full Time Staff

	Graduates			Non-Graduates		TOTAL
	Maths	Science	Other	Qualified	Non-Qualified	
Men	37	102	237	42	4	422
Women	20	22	140	40	8	230

TABLE 16D : Part Time Staff

	Graduates		Non-Graduates		TOTAL
	Men	Women	Men	Women	
Number	22	55	11	36	124
Aggregate number of hours per week	190	500	126	321	1,137

STAFFING

TABLE 16E : Full Time Staff Changes

NUMBER	Coming from	Going to
Independent Schools	27	12
Maintained Schools	19	11
University, Polytechnic or Training College	9	2
Industry, etc.	1	1
Other (incl. Retirement)	14	36
TOTAL	70	62

TABLE 16F : Number of Sixth Form Pupils

Number of Pupils who have completed their GCSE or (in Scotland) their Standard Grades. Pupils who are re-taking some of these exams are included. Each first and second year sixth form pupil is included once.			
	Boys	Girls	TOTAL
Number on A-level or (in Scotland) Higher Grade or CSYS Courses.	700	517	1,217
NUMBER on CSE/GCSE/Standard Grade re-take Courses.	84	23	107
Number on other Courses.	12	5	17
TOTAL	796	545	1,341

COURSES OF STUDY

TABLE 16G :

Sixth Form Pupils Analysed by Course of Study

Each Sixth form pupil is included once for each A-level or SCSYS course being studied (e.g. a pupil taking three A-level courses is counted three times.)

AS-level courses are counted at the rate 2 AS-level = 1 A-level and Scottish Higher Grade courses at the rate of 3 Highers = 2 A-levels.

	Boys	Girls	TOTAL
Arts	262	293	555
Classics	4	14	18
English	161	215	376
Mathematics	369	164	533
Modern Languages	117	182	299
Science/Technology	735	297	1,032
Social Science	508	299	807
TOTAL	2,156	1,464	3,620

SOURCES OF ENTRY DESTINATION OF LEAVERS

TABLE 16H : Sources of Entry

		From Another School		From Overseas		Other	TOTAL
		Indep.	Maint.	Expatriate	Foreign		
BOYS	From Pre-Prep/Nursery/No School	49	86				
	From Prep/Primary School	281	207	13	33	0	534
	From Senior School (Pre GCSE)	57	113	11	59	0	240
	From Senior School (Post GCSE)	30	24	7	35	0	96
GIRLS	From Pre-Prep/Nursery/No School	0	1	0	1	19	21
	From Prep/Primary School	135	99	11	5	0	250
	From Senior School (Pre GCSE)	50	42	15	19	0	126
	From Senior School (Post GCSE)	84	44	4	17	0	149
TOTAL		655	547	63	169	68	1,502

TABLE 16J : Destination of leavers who have sat A-level, SCSYS or Scottish Higher exams.

			Boys	Girls	TOTAL
Pupils who left to take Higher Education Courses in the U.K. or Overseas	Entrants to Universities, Including Deferred Entry	Arts	22	51	73
		Science	64	31	95
		Engineering/Technology	31	3	34
		Social Science	53	24	77
	Degree Courses at Polytechnic	Arts	6	12	18
		Science	9	5	14
		Engineering/Technology	7	1	8
		Social Science	33	16	49
	All other H.E. Courses	Arts	3	11	14
		Science	5	2	7
		Engineering/Technology	0	0	0
		Social Science	9	2	11
Pupils who left to continue Secondary Education elsewhere	To another Indep. School	14	14	28	
	To a Maintained School	20	8	28	
Other Pupils who left	For Further Education or Training		13	24	37
	For Employment		46	18	64
	Others		34	22	56
TOTAL			369	244	613

TABLE 16I : Destination of leavers who have not sat A-level, SCSYS or Scottish Higher exams.

		To Another School			To Further Education	Employment	Other	TOTAL
		Indep.	L.E.A.	Overseas				
BOYS	Leaving at end of Pre-Prep	3	0	1	0	0	0	4
	Leaving at end of Prep	12	17	4	0	1	4	38
	Leaving immediately after GCSE	32	56	15	147	34	41	325
	Others	19	43	24	13	8	33	140
GIRLS	Leaving at end of Pre-Prep	4	1	1	0	0	0	6
	Leaving at end of Prep	8	14	5	1	0	3	31
	Leaving immediately after GCSE	18	17	6	49	11	16	117
	Others	17	28	5	16	3	9	78
TOTAL		113	176	61	226	57	106	739

NUMBER OF PUPILS

TABLE 17A

NUMBER OF PUPILS IN JANUARY 1991 AND CHANGES SINCE 1990

Figures for 1991 are printed in **BOLD**, those for 1990 and per cent changes are printed below

AGE ON 31 AUG 90	BOYS		GIRLS		TOTAL
	BOARDERS FULL	DAY WEEKLY	BOARDERS FULL	DAY WEEKLY	
2	0	0	0	0	315
	0	0	0	0	217
					315
3	0	0	0	0	195
	0	0	0	0	195
	0	0	0	0	195
4	1	0	0	0	195
	0	0	0	0	195
	0	0	0	0	195
5	0	0	0	0	195
	0	0	0	0	195
	0	0	0	0	195
6	0	0	0	0	195
	0	0	0	0	195
	0	0	0	0	195
7	2	0	7	7	195
	0	0	10	10	195
	0	0	10	10	195
8	3	1	27	27	195
	2	1	69	69	195
	2	1	78	78	195
9	6	1	42	42	195
	2	1	174	174	195
	2	1	48	48	195
10	4	3	102	102	195
	1	0	359	359	195
	1	0	436	436	195
11	4	1	365	365	195
	2	1	1,674	1,674	195
	2	1	8	8	195
12	5	1	348	348	195
	5	1	1,697	1,697	195
	5	1	403	403	195
13	5	0	421	421	195
	10	1	2,637	2,637	195
	10	1	2,796	2,796	195
14	1	1	458	458	195
	0	0	3,194	3,194	195
	0	0	9.6	9.6	195
15	3	1	519	519	195
	1	0	3,157	3,157	195
	1	0	493	493	195
16	0	0	358	358	195
	0	0	2,744	2,744	195
	0	0	2,907	2,907	195
17	0	0	308	308	195
	0	0	2,349	2,349	195
	0	0	304	304	195
18	1	0	29	29	195
	0	0	359	359	195
	0	0	382	382	195
19	0	0	58	58	195
	0	0	0	0	195
	0	0	50	50	195
TOTAL	31	8	3,042	3,042	195
	25	5	1,693	1,693	195
	+24.0%	+60.0%	+3.8%	+1.8%	+0.9%

NUMBERS AND FEES BY AREAS

TABLE 17B

ANALYSIS OF PUPIL NUMBERS AND AVERAGE TERMLY FEES
(PERCENT CHANGES ARE BASED ON 1990 FIGURES)

AREA	No. of Schools	BOYS			GIRLS			TOTAL		Boarding Fee	Weekly Boarding Fee	Day Fee Boarding Schools	Day Fee Day Schools
		Boarding Full	Weekly	Day	Boarding Full	Weekly	Day	Boarding Full	Weekly				
Scotland	11			47	790	73	3872	790	73	3919	£2276	£2286	£1139
				+4.4%	-5.8%	+10.6%	-1.3%	-5.8%	+10.6%	-1.2%	+12.3%	+12.8%	+11.8%
The North	38			603	1574	178	18658	1574	178	19261	£2348	£2099	£1378
				-2.9%	-9.2%	+93.5%	+0.5%	-9.2%	+93.5%	+0.4%	+11.3%	+10.4%	+11.4%
Wales	4			44	488	90	1474	488	90	1518	£2194	£2093	£1362
				+10.0%	-1.4%	-14.3%	+1.4%	-1.4%	-14.3%	+1.6%	+11.1%	+11.5%	+12.7%
W Midlands	25			151	2516	240	7660	2516	240	7811	£2459	£2142	£1487
				+36.0%	-3.5%	-13.0%	+4.2%	-3.5%	-13.0%	+4.7%	+13.9%	+13.9%	+13.1%
E Midlands	32			120	2704	797	12420	2704	797	12540	£2303	£2057	£1242
				-2.4%	-3.9%	+0.1%	+0.6%	-3.9%	+0.1%	+0.6%	+13.4%	+13.0%	+11.3%
East Anglia	12			117	965	140	4502	965	140	4619	£2359	£1737	£1328
				+30.0%	-10.0%	+12.0%	+1.2%	-10.0%	+12.0%	+1.8%	+10.1%	+7.2%	+12.0%
South & West	30	4	4	261	3273	499	8070	3277	503	8331	£2259	£1967	£1299
		-33.3%	+33.3%	-5.1%	-2.2%	-5.0%	+0.4%	-2.3%	-4.7%	+0.2%	+12.3%	+12.1%	+13.0%
Greater London	31			115	84	31	18222	84	31	18337	£2355	£2116	£1293
				+19.8%	-25.0%	+19.2%	+0.3%	-25.0%	+19.2%	+0.4%	+12.0%	+12.3%	+14.6%
South East	66	27	4	299	6271	994	17040	6298	998	17339	£2507	£2322	£1469
		+42.1%	+100.0%	+2.4%	-5.0%	+1.6%	+1.4%	-4.8%	+1.8%	+1.4%	+13.3%	+12.6%	+13.7%
All	249	31	8	1757	18665	3042	91918	18696	3050	93675	£2386	£2147	£1370
		+24.0%	+60.0%	+3.8%	-4.9%	+1.8%	+0.9%	-4.8%	+1.9%	+1.0%	+12.8%	+12.4%	+12.9%

TABLE 17C : Full Time Staff

	Graduates			Non-Graduates		TOTAL
	Maths	Science	Other	Qualified	Non-Qualified	
Men	126	338	637	76	3	1,180
Women	680	989	4,426	1,637	82	7,814

TABLE 17D : Part Time Staff

	Graduates		Non-Graduates		TOTAL
	Men	Women	Men	Women	
Number	275	2,375	59	989	3,698
Aggregate number of hours per week	3,456	28,428	942	11,357	44,183

STAFFING

TABLE 17E : Full Time Staff Changes

NUMBER	Coming from	Going to
Independent Schools	367	265
Maintained Schools	492	149
University, Polytechnic or Training College	118	35
Industry, etc.	29	48
Other (incl. Retirement)	177	605
TOTAL	1,183	1,102

TABLE 17F : Number of Sixth Form Pupils

Number of Pupils who have completed their GCSE or (in Scotland) their Standard Grades. Pupils who are re-taking some of these exams are included. Each first and second year sixth form pupil is included once.			
	Boys	Girls	TOTAL
Number on A-level or (in Scotland) Higher Grade or CSYS Courses.	19	19,440	19,459
NUMBER on CSE/GCSE/ Standard Grade re-take Courses.	1	625	626
Number on other Courses.	0	161	161
TOTAL	20	20,226	20,246

COURSES OF STUDY

TABLE 17G :

Sixth Form Pupils Analysed by Course of Study

Each Sixth form pupil is included once for each A-level or SCSYS course being studied (e.g. a pupil taking three A-level courses is counted three times.)

AS-level courses are counted at the rate 2 AS-level = 1 A-level and Scottish Higher Grade courses at the rate of 3 Highers = 2 A-levels.

	Boys	Girls	TOTAL
Arts	7	11,601	11,608
Classics	0	2,284	2,284
English	3	6,979	6,982
Mathematics	6	6,385	6,391
Modern Languages	2	7,579	7,581
Science/Technology	25	13,221	13,246
Social Science	28	8,635	8,663
TOTAL	71	56,684	56,755

SOURCES OF ENTRY DESTINATION OF LEAVERS

TABLE 17H : Sources of Entry

		From Another School		From Overseas		Other	TOTAL
		Indep.	Maint.	Expatriate	Foreign		
BOYS	From Pre-Prep/Nursery/No School	68	25	0	8	435	536
	From Prep/Primary School	45	32	4	6	6	93
	From Senior School (Pre GCSE)	8	0	0	0	0	8
	From Senior School (Post GCSE)	14	2	0	0	23	39
GIRLS	From Pre-Prep/Nursery/No School	847	321	7	20	1,793	2,988
	From Prep/Primary School	6,002	5,076	228	340	99	11,745
	From Senior School (Pre GCSE)	1,540	1,266	158	654	51	3,669
	From Senior School (Post GCSE)	572	384	35	405	15	1,411
TOTAL		9,096	7,106	432	1,433	2,422	20,489

TABLE 17I : Destination of leavers who have not sat A-level, SCSYS or Scottish Higher exams.

		To Another School			To Further Education	Employment	Other	TOTAL
		Indep.	L.E.A.	Overseas				
BOYS	Leaving at end of Pre-Prep	215	108	5	0	0	11	339
	Leaving at end of Prep	57	18	2	0	0	1	78
	Leaving immediately after GCSE	8	10	1	0	0	0	19
	Others	47	31	10	2	0	15	105
GIRLS	Leaving at end of Pre-Prep	163	212	28	0	0	10	413
	Leaving at end of Prep	624	268	69	51	4	18	1,034
	Leaving immediately after GCSE	1,780	1,355	182	1,509	210	149	5,185
	Others	1,052	792	514	317	81	191	2,947
TOTAL		3,946	2,794	811	1,879	295	395	10,120

TABLE 17J : Destination of leavers who have sat A-level, SCSYS or Scottish Higher exams.

			Boys	Girls	TOTAL
Pupils who left to take Higher Education Courses in the U.K. or Overseas	Entrants to Universities, Including Deferred Entry	Arts	0	2,493	2,493
		Science	1	1,589	1,590
		Engineering/Technology	1	257	258
		Social Science	0	912	912
	Degree Courses at Polytechnic	Arts	1	498	499
		Science	0	246	246
		Engineering/Technology	0	68	68
		Social Science	1	455	456
	All other H.E. Courses	Arts	0	547	547
		Science	1	119	120
		Engineering/Technology	0	27	27
		Social Science	0	223	223
Pupils who left to continue Secondary Education elsewhere	To another Indep. School	0	470	470	
	To a Maintained School	0	287	287	
Other Pupils who left	For Further Education or Training		1	562	563
	For Employment		2	353	355
	Others		0	382	382
TOTAL			8	9,488	9,496

NUMBER OF PUPILS

TABLE 18A

NUMBER OF PUPILS IN JANUARY 1991 AND CHANGES SINCE 1990

Figures for 1991 are printed in **BOLD**, those for 1990 and per cent changes are printed below

AGE ON 31 AUG 90	BOYS		GIRLS		TOTAL
	BOARDS FULL	DAY WEEKLY	BOARDS FULL	DAY WEEKLY	
2	0	0	0	0	38
	0	0	0	0	20
		+87.5%		+91.7%	+90.0%
3	0	0	0	0	55
	0	0	0	0	45
		+5.9%		+32.1%	+22.2%
4	0	0	0	0	131
	0	0	0	0	83
		48			131
		45			144
		+6.7%		-16.2%	-9.0%
5	0	0	0	0	132
	0	0	0	0	169
		37			134
		39			134
		-5.1%		+38.9%	+26.1%
6	0	0	0	0	104
	0	0	0	0	137
		33			137
		25			132
		+32.0%		-2.8%	+3.8%
7	0	0	1	0	138
	0	0	1	1	158
		28			137
		-32.1%		-100.0%	-5.4%
8	0	0	2	0	157
	0	0	0	0	186
		27			157
		21			199
		+28.6%		-11.8%	-6.5%
9	0	0	5	2	209
	0	0	2	4	172
		19			238
		+21.1%		-50.0%	+21.3%
10	0	0	4	6	201
	0	0	8	4	216
		+35.0%		+50.0%	-6.9%
		36			341
		31			403
		+16.1%		11	330
		-6.2%		11	388
		33		9	338
		22		16	380
		45		380	465
		-26.7%		-43.7%	-11.1%
13	0	0	23	15	414
	0	0	12	12	520
		70			394
		-2.9%		+25.0%	+5.1%
14	0	0	41	15	400
	1	0	32	13	438
		+65.2%		+15.4%	+0.4%
15	0	0	37	18	542
	3	0	44	16	422
		-4.0%		+12.5%	+4.0%
16	2	0	22	9	238
	3	0	24	11	275
		-33.3%		-18.2%	-13.5%
17	1	0	9	7	206
	5	0	12	11	168
		+109.1%		-36.4%	+22.6%
18	1	0	2	1	6
	1	0	3	0	30
		-100.0%		-33.3%	-80.0%
19	0	0	0	0	1
	0	0	0	0	1
		-100.0%		93	-50.0%
TOTAL	4	0	563	183	3,467
	13	0	522	210	4,310
		-69.2%		99	3,482
				-6.1%	-0.4%

NUMBERS AND FEES BY AREAS

TABLE 18B

ANALYSIS OF PUPIL NUMBERS AND AVERAGE TERMLY FEES
(PERCENT CHANGES ARE BASED ON 1990 FIGURES)

AREA	No. of Schools	BOYS			GIRLS			TOTAL			Boarding	Weekly	Day Fee	Day Fee
		Boarding		Day	Boarding		Day	Boarding		Day	Fee	Boarding	Boarding	Day
		Full	Weekly		Full	Weekly		Full	Weekly			Fee	Schools	Schools
Scotland	3			234	19	4	1036	19	4	1270	£2260	£2260	£1053	£999
				+8.3%	-13.6%	+100.0%	+0.3%	-13.6%	+100.0%	+1.7%	+12.2%	+12.2%	+12.4%	+11.7%
The North	2			24	26	1	738	26	1	762	£1800		£990	£860
				-17.2%	-35.0%		-3.0%	-35.0%		-3.5%	+16.9%		+12.5%	+13.2%
W Midlands	2			19	8	85	587	8	85	606		£1915	£1145	£577
				-46.7%	-10.5%		+2.4%	-46.7%	-10.5%	+5.8%		+9.1%	+9.0%	-33.3%
South East	5	4		286	130	3	1106	134	3	1392	£2091	£1877	£1081	£955
		-69.2%		+3.2%	-2.3%	+50.0%	-0.8%	-8.2%	+50.0%		+17.5%	+21.9%	+14.4%	+13.0%
All	12	4		563	183	93	3467	187	93	4030	£2067	£1982	£1071	£890
		-69.2%		+7.9%	-12.9%	-6.1%	-0.4%	-16.1%	-6.1%	+0.6%	+16.2%	+15.8%	+12.7%	+4.7%

TABLE 18C : Full Time Staff

	Graduates			Non-Graduates		TOTAL
	Maths	Science	Other	Qualified	Non-Qualified	
Men	7	6	28	5	0	46
Women	27	39	127	95	4	292

TABLE 18D : Part Time Staff

	Graduates		Non-Graduates		TOTAL
	Men	Women	Men	Women	
Number	9	105	2	64	180
Aggregate number of hours per week	125	1,427	10	791	2,353

STAFFING

TABLE 18E : Full Time Staff Changes

NUMBER	Coming from	Going to
Independent Schools	8	5
Maintained Schools	27	11
University, Polytechnic or Training College	2	0
Industry, etc.	1	0
Other (incl. Retirement)	6	23
TOTAL	44	39

TABLE 18F : Number of Sixth Form Pupils

Number of Pupils who have completed their GCSE or (in Scotland) their Standard Grades. Pupils who are re-taking some of these exams are included. Each first and second year sixth form pupil is included once.			
	Boys	Girls	TOTAL
Number on A-level or (in Scotland) Higher Grade or CSYS Courses.	52	465	517
NUMBER on CSE/GCSE/ Standard Grade re-take Courses.	1	76	77
Number on other Courses.	0	0	0
TOTAL	53	541	594

COURSES OF STUDY

TABLE 18G :

Sixth Form Pupils Analysed by Course of Study

Each Sixth form pupil is included once for each A-level or SCYS course being studied (e.g. a pupil taking three A-level courses is counted three times.) AS-level courses are counted at the rate 2 AS-level = 1 A-level and Scottish Higher Grade courses at the rate of 3 Highers = 2 A-levels.			
	Boys	Girls	TOTAL
Arts	27	190	217
Classics	5	20	25
English	12	173	185
Mathematics	24	91	115
Modern Languages	7	118	125
Science/Technology	31	208	239
Social Science	14	206	220
TOTAL	120	1,006	1,126

SOURCES OF ENTRY DESTINATION OF LEAVERS

TABLE 18H : Sources of Entry

		From Another School		From Overseas		Other	TOTAL
		Indep.	Maint.	Expatriate	Foreign		
BOYS	From Pre-Prep/Nursery/No School	26	36	2	2	13	79
	From Prep/Primary School	9	1	0	0	0	10
	From Senior School (Pre GCSE)	1	2	0	0	16	19
	From Senior School (Post GCSE)	9	10	1	4	82	106
GIRLS	From Pre-Prep/Nursery/No School	88	163	8	17	16	292
	From Prep/Primary School	26	41	3	37	0	107
	From Senior School (Pre GCSE)	4	3	0	9	0	16
	From Senior School (Post GCSE)	166	258	14	69	161	668
TOTAL		27	7	2	0	0	6

TABLE 18J : Destination of leavers who have sat A-level, SCSYS or Scottish Higher exams.

		Boys	Girls	TOTAL	
Pupils who left to take Higher Education Courses in the U.K. or Overseas	Entrants to Universities, Including Deferred Entry	Arts	1	42	43
		Science	5	25	30
		Engineering/Technology	6	7	13
		Social Science	1	8	9
	Degree Courses at Polytechnic	Arts	0	18	18
		Science	2	3	5
		Engineering/Technology	3	3	6
		Social Science	3	8	11
	All other H.E. Courses	Arts	0	8	8
		Science	0	0	0
		Engineering/Technology	0	1	1
		Social Science	0	13	13
Pupils who left to continue Secondary Education elsewhere	To another Indep. School	1	8	9	
	To a Maintained School	4	16	20	
Other Pupils who left	For Further Education or Training	0	20	20	
	For Employment	2	22	24	
	Others	0	10	10	
TOTAL		28	212	240	

TABLE 18I : Destination of leavers who have not sat A-level, SCSYS or Scottish Higher exams.

		To Another School		To Further Education	Employment	Other	TOTAL
		Indep.	L.E.A.	Overseas			
BOYS	Leaving at end of Pre-Prep	42					
	Leaving at end of Prep	0	1	0	0	0	1
	Leaving immediately after GCSE	2	7	1	23	1	35
	Others	1	2	2	0	0	5
GIRLS	Leaving at end of Pre-Prep	21	9	3	0	0	48
	Leaving at end of Prep	27	15	3	0	0	45
	Leaving immediately after GCSE	52	22	7	102	9	194
	Others	45	42	21	6	4	120
TOTAL		175	105	39	131	14	490

IAPS

NUMBER OF PUPILS

TABLE 19A

NUMBER OF PUPILS IN JANUARY 1991 AND CHANGES SINCE 1990

Figures for 1991 are printed in **BOLD**, those for 1990 and per cent changes are printed below

AGE ON 31 AUG 90	BOYS			GIRLS			TOTAL
	BOARDS FULL	DAY WEEKLY	DAY	BOARDS FULL	DAY WEEKLY	DAY	
2	0	0	638	0	0	508	1,146
	0	0	560	0	0	481	1,041
			+13.9%			+5.6%	+10.1%
3	0	0	2,407	0	0	1,890	4,297
	0	0	2,179	0	0	1,720	3,899
			+10.5%			+9.9%	+10.2%
4	4	0	4,630	4	0	3,155	7,793
	0	0	4,443	0	0	2,988	7,431
			+4.2%			+5.6%	+4.9%
5	11	2	5,113	3	4	3,255	8,388
	2	0	4,963	3	1	3,206	8,175
			+3.0%			+1.5%	+2.6%
6	52	18	5,502	16	6	3,429	9,023
	47	12	5,210	34	5	3,119	8,427
			+5.6%			+9.9%	+7.1%
7	425	102	7,238	138	30	3,624	11,557
	510	91	7,236	154	33	3,635	11,659
			+0.0%			-0.3%	-0.9%
8	1,469	248	8,250	403	118	3,985	14,473
	1,623	253	8,518	462	93	3,958	14,907
			-3.1%			+0.7%	-2.9%
9	396	2.0%	8,860	668	169	4,034	16,238
	2,111	407	8,766	787	133	3,978	16,407
			+1.1%			+1.4%	-1.0%
10	542	2.7%	8,769	936	210	3,825	17,058
	2,990	543	8,569	1,008	214	3,661	16,985
			+2.3%			-1.9%	+0.4%
11	704	0.2%	6,872	997	210	1,334	13,424
	3,376	661	6,465	940	178	1,223	12,843
			+6.5%			+9.1%	+4.5%
12	843	2.0%	5,130	709	140	703	11,067
	3,542	838	4,773	666	116	614	10,586
			+7.5%			+14.5%	+4.5%
13	88	0.6%	485	66	14	74	1,145
	412	77	424	48	20	48	1,029
			+14.4%			+54.2%	+11.3%
14	13	1.5%	147	13	12	44	231
	5	1	148	16	8	28	206
			-0.7%			+57.1%	+12.1%
15	2	100.0%	142	11	13	26	195
	1	3	124	13	12	28	181
			+14.5%			-7.1%	+7.7%
16	0	33.3%	55	0	0	2	58
	0	1	53	0	0	3	56
			+3.8%			-33.3%	+3.6%
17	0	0	32	0	0	0	32
	0	0	23	0	0	0	23
			+39.1%			0	+39.1%
18	0	0	3	0	0	0	3
	0	0	3	0	0	0	3
19	0	0	0	0	0	1	1
	0	0	0	0	0	0	0
TOTAL	14,129	2,948	64,273	3,964	926	29,889	116,129
	14,881	2,886	62,457	4,131	813	28,690	113,858
			+2.1%			+4.2%	+2.0%

NUMBERS AND FEES BY AREAS

TABLE 19B

ANALYSIS OF PUPIL NUMBERS AND AVERAGE TERMLY FEES
(PERCENT CHANGES ARE BASED ON 1990 FIGURES)

AREA	No. of Schools	BOYS			GIRLS			TOTAL			Boarding Fee	Weekly Boarding Fee	Day Fee Boarding Schools	Day Fee Day Schools
		Boarding Full	Weekly	Day	Boarding Full	Weekly	Day	Boarding Full	Weekly	Day				
Scotland	19	551	73	1588	256	33	956	807	106	2544	£2050	£2028	£1292	£980
		-6.0%	-11.0%	+1.9%	-6.2%	+22.2%	+9.0%	-6.1%	-2.8%	+4.4%	+9.3%	+11.4%	+12.5%	+12.6%
The North	53	1305	199	5692	337	113	2729	1642	312	8421	£1834	£1676	£1160	£859
		-4.6%	-1.5%	+2.0%	-12.0%	+10.8%	+4.1%	-6.2%	+2.6%	+2.6%	+13.2%	+13.4%	+13.8%	+12.9%
Wales	7	159	48	831	50	28	478	209	76	1309	£1689	£1501	£1112	£855
		+9.7%	-23.8%		-23.1%	-3.4%	+2.1%	-0.5%	-17.4%	+0.8%	+12.3%	+12.7%	+12.8%	+20.9%
W Midlands	60	1760	432	6259	458	245	3403	2218	677	9662	£1859	£1767	£1313	£938
		-3.0%	-9.4%	+0.7%	+0.4%	+15.0%	+3.5%	-2.3%	-1.9%	+1.7%	+12.0%	+11.3%	+13.2%	+14.5%
E Midlands	70	1945	361	8762	362	61	4203	2307	422	12965	£1989	£1808	£1317	£991
		-0.2%	-10.4%	+2.2%	-3.2%	-10.3%	+5.6%	-0.6%	-10.4%	+3.3%	+10.5%	+13.1%	+12.7%	+11.0%
East Anglia	36	700	311	4872	234	90	2135	934	401	7007	£2032	£1928	£1384	£837
		-18.1%	+32.3%	+4.7%	-10.7%	+125.0%	+1.8%	-16.4%	+45.8%	+3.8%	+11.5%	+11.3%	+10.9%	+13.6%
South & West	58	2210	428	5572	982	179	2904	3192	607	8476	£2019	£1910	£1328	£871
		-5.9%	+12.9%	+3.6%	-3.3%	-6.3%	+4.3%	-5.1%	+6.5%	+3.8%	+11.9%	+12.3%	+13.1%	+13.9%
Greater London	55	170	73	10569			2922	170	73	13491	£1154	£2234	£1329	£1170
		+11.1%	-7.6%	+2.4%			+3.7%	-3.4%	-7.6%	+2.7%	+12.9%	+15.2%	+13.5%	+14.4%
South East	169	5236	974	19525	1244	152	10042	6480	1126	29567	£2045	£1929	£1396	£1006
		-5.7%	+5.8%	+3.8%	+0.4%	+23.6%	+4.2%	-4.6%	+7.9%	+3.9%	+13.0%	+13.1%	+13.3%	+13.4%
Ireland	5	93	49	603	41	25	117	134	74	720	£1504	£1455	£830	
		-17.0%	+8.9%	+15.5%		+25.0%	-1.7%	-12.4%	+13.8%	+12.3%	+5.7%	+6.0%	+5.5%	
All	532	14129	2948	64273	3964	926	29889	18093	3874	94162	£1958	£1854	£1323	£999
		-5.1%	+2.1%	+2.9%	-4.0%	+13.9%	+4.2%	-4.8%	+4.7%	+3.3%	+11.9%	+12.4%	+13.0%	+13.4%

STAFFING

TABLE 19C : Full Time Staff

	Graduates			Non-Graduates		TOTAL
	Maths	Science	Other	Qualified	Non-Qualified	
Men	248	395	2,339	933	246	4,161
Women	90	170	1,867	2,420	342	4,889

TABLE 19D : Part Time Staff

	Graduates		Non-Graduates		TOTAL
	Men	Women	Men	Women	
Number	288	750	267	1,413	2,718
Aggregate number of hours per week	2,602	9,674	2,404	17,707	32,387

TABLE 19E : Full Time Staff Changes

NUMBER	Coming from	Going to
Independent Schools	482	306
Maintained Schools	329	126
University, Polytechnic or Training College	162	63
Industry, etc.	45	32
Other (incl. Retirement)	247	503
TOTAL	1,265	1,030

SOURCES OF ENTRY
DESTINATION OF LEAVERS

TABLE 19H : Sources of Entry

		From Another School		From Overseas		Other	TOTAL
		Indep.	Maint.	Expatriate	Foreign		
BOYS	From Pre-Prep/Nursery/No School	3,267	803	106	147	4,342	8,665
	From Prep/Primary School	3,431	4,869	481	591	335	9,707
	From Senior School (Pre GCSE)	9	52	8	9	14	92
	From Senior School (Post GCSE)	0	2	0	1	74	77
GIRLS	From Pre-Prep/Nursery/No School	1,110	348	50	56	2,912	4,476
	From Prep/Primary School	1,428	1,840	244	244	113	3,869
	From Senior School (Pre GCSE)	19	29	4	5	2	59
	From Senior School (Post GCSE)	19	28	3	4	0	54
TOTAL		9,283	7,971	896	1,057	7,792	26,999

TABLE 19I : Destination of leavers who have not sat A-level, SCSYS or Scottish Higher exams.

		To Another School			To Further Education	Employment	Other	TOTAL
		Indep.	L.E.A.	Overseas				
BOYS	Leaving at end of Pre-Prep	1,264	326	84	0	0	34	1,708
	Leaving at end of Prep	10,170	1,178	271	1	0	46	11,666
	Leaving immediately after GCSE	32	30	1	43	4	5	115
	Others	1,130	682	254	3	2	116	2,187
GIRLS	Leaving at end of Pre-Prep	579	182	61	0	0	16	838
	Leaving at end of Prep	3,747	545	109	0	0	27	4,428
	Leaving immediately after GCSE	57	17	5	7	3	6	95
	Others	585	283	143	0	0	55	1,066
TOTAL		17,564	3,243	928	54	9	305	22,103

NUMBER OF PUPILS

TABLE 20A

NUMBER OF PUPILS IN JANUARY 1991 AND CHANGES SINCE 1990

Figures for 1991 are printed in **BOLD**, those for 1990 and per cent changes are printed below

AGE ON 31 AUG 90	BOYS			GIRLS			TOTAL
	BOARDERS FULL	WEEKLY	DAY	BOARDERS FULL	WEEKLY	DAY	
2	0	0	477	0	0	597	1,074
	0	0	449	0	0	486	935
			+6.2%			+22.8%	+14.9%
3	0	0	1,505	0	0	1,586	3,091
	0	0	1,477	0	0	1,512	2,989
			+1.9%			+4.9%	+3.4%
4	1	0	2,342	0	0	2,318	4,661
	0	0	2,279	0	0	2,189	4,468
			+2.8%			+5.9%	+4.3%
5	2	1	2,366	0	0	2,218	4,587
	1	0	2,204	1	0	2,117	4,323
			+7.4%			+4.8%	+6.1%
6	5	5	2,272	3	2	2,153	4,440
	6	4	2,174	7	1	2,169	4,361
			+4.5%			-0.7%	+1.8%
7	7	14	2,054	22	8	2,186	4,291
	25	8	1,982	18	6	2,142	4,181
			+3.6%			+2.1%	+2.6%
8	36	18	1,905	37	8	2,172	4,176
	44	14	1,837	31	16	2,183	4,125
			+3.7%			-0.5%	+1.2%
9	60	31	1,924	54	19	2,255	4,343
	84	30	1,979	71	24	2,283	4,471
			-2.8%			-1.2%	-2.9%
10	111	44	2,031	88	39	2,338	4,651
	119	39	1,880	102	31	2,382	4,553
			+8.0%			-1.8%	+2.2%
11	190	90	1,751	142	58	2,137	4,368
	190	65	1,717	146	48	1,889	4,055
			+2.0%			+13.1%	+7.7%
12	219	86	1,708	184	46	1,815	4,058
	245	82	1,711	196	33	1,892	4,159
			-0.2%			-4.1%	-2.4%
13	324	94	1,775	252	41	1,899	4,385
	349	84	1,743	245	43	1,890	4,354
			+1.8%			+0.5%	+0.7%
14	363	99	1,710	249	50	1,858	4,329
	436	97	1,783	281	45	1,975	4,617
			-4.1%			-5.9%	-6.2%
15	447	121	1,740	278	53	1,938	4,577
	441	88	1,912	263	76	2,072	4,852
			-9.0%			-6.5%	-5.7%
16	250	43	679	107	27	666	1,772
	238	46	759	126	27	664	1,860
			-10.5%			+0.3%	-4.7%
17	117	20	433	68	9	476	1,123
	136	18	476	69	6	443	1,148
			+11.1%			+7.4%	-2.2%
18	49	7	90	15	1	109	271
	37	7	106	8	1	112	271
			-15.1%			-2.7%	
19	15	0	28	3	0	55	101
	17	0	26	1	0	51	95
			+7.7%			+7.8%	+6.3%
TOTAL	2,196	673	26,790	1,502	361	28,776	60,298
	2,368	582	26,494	1,565	357	28,451	59,817
			+1.1%			+1.1%	+0.8%
			-7.3%			+1.1%	+0.8%

NUMBERS AND FEES BY AREAS

TABLE 20B

ANALYSIS OF PUPIL NUMBERS AND AVERAGE TERMLY FEES
(PERCENT CHANGES ARE BASED ON 1990 FIGURES)

AREA	No. of Schools	BOYS			GIRLS			TOTAL			Boarding Fee	Weekly Boarding Fee	Day Fee Boarding Schools	Day Fee Day Schools
		Boarding Full	Weekly	Day	Boarding Full	Weekly	Day	Boarding Full	Weekly	Day				
The North	49	457	64	5749	447	23	5591	904	87	11340	£1813	£1743	£952	£708
		-6.5%	+8.5%	+1.8%	-4.3%	-4.2%	+2.7%	-5.4%	+4.8%	+2.3%	+12.6%	+12.8%	+13.5%	+11.7%
Wales	11	8	3	893			830	8	3	1723	£1855	£1750	£1170	£753
		-38.5%		-3.3%			-1.9%	-42.9%		-2.6%	+7.5%	+7.7%	+24.5%	+12.6%
W Midlands	30	304	104	3297	191	50	3107	495	154	6404	£1974	£1885	£1132	£823
		-8.7%	+14.3%	+3.3%		+25.0%	+2.5%	-5.5%	+17.6%	+2.9%	+7.6%	+9.3%	+9.7%	+13.4%
E Midlands	34	221	45	3327	213	54	3447	434	99	6774	£1703	£1630	£911	£850
		-6.8%	+9.8%	+2.5%	-14.8%	+28.6%	+1.4%	-10.9%	+19.3%	+1.9%	+11.6%	+11.9%	+12.2%	+12.1%
East Anglia	25	179	84	2193	130	28	2683	309	112	4876	£2013	£1755	£1095	£810
		-9.1%	+15.1%	+6.7%	+22.6%	-12.5%	+3.0%	+2.0%	+6.7%	+4.6%	+6.3%	+10.5%	+8.7%	+14.2%
South & West	25	363	100	2144	177	61	2069	540	161	4213	£1977	£1707	£943	£751
		-6.2%		-2.9%	-6.3%	-28.2%	-3.1%	-6.2%	-13.0%	-3.0%	+13.0%	+11.2%	+12.4%	+10.8%
Greater London	52	100	28	5166	26	7	6013	126	35	11179	£1805	£1712	£1075	£1056
		-7.4%	+55.6%	+1.1%	-16.1%	+133.3%	+2.1%	-9.4%	+66.7%	+1.6%	+14.1%	+14.1%	+11.7%	+16.4%
South East	47	564	245	4021	318	138	5036	882	383	9057	£2156	£2222	£1474	£865
		-6.6%	+24.4%	-2.2%	-3.6%	+5.3%	-1.2%	-5.6%	+16.8%	-1.7%	+5.3%	+6.0%	+8.0%	+15.3%
All	273	2196	673	26790	1502	361	28776	3698	1034	55566	£1949	£1877	£1126	£859
		-7.3%	+15.6%	+1.1%	-4.0%	+1.1%	+1.1%	-6.0%	+10.1%	+1.1%	+9.2%	+9.3%	+10.4%	+14.1%

TABLE 20C : Full Time Staff

	Graduates			Non-Graduates		TOTAL
	Maths	Science	Other	Qualified	Non-Qualified	
Men	105	253	600	210	44	1,212
Women	110	164	979	1,317	239	2,809

TABLE 20D : Part Time Staff

	Graduates		Non-Graduates		TOTAL
	Men	Women	Men	Women	
Number	231	851	192	1,165	2,439
Aggregate number of hours per week	2,465	10,938	1,842	14,468	29,713

STAFFING

TABLE 20E: Full Time Staff Changes

NUMBER	Coming from	Going to
Independent Schools	132	105
Maintained Schools	243	106
University, Polytechnic or Training College	59	19
Industry, etc.	21	27
Other (incl. Retirement)	187	269
TOTAL	642	526

TABLE 20F: Number of Sixth Form Pupils

Number of Pupils who have completed their GCSE or (in Scotland) their Standard Grades. Pupils who are re-taking some of these exams are included. Each first and second year sixth form pupil is included once.			
	Boys	Girls	TOTAL
Number on A-level or (in Scotland) Higher Grade or CSYS Courses.	1,017	951	1,968
NUMBER on CSE/GCSE/Standard Grade re-take Courses.	259	206	465
Number on other Courses.	88	234	322
TOTAL	1,364	1,391	2,755

COURSES OF STUDY

TABLE 20G :

Sixth Form Pupils Analysed by Course of Study

Each Sixth form pupil is included once for each A-level or SCSYS course being studied (e.g. a pupil taking three A-level courses is counted three times.)

AS-level courses are counted at the rate 2 AS-level = 1 A-level and Scottish Higher Grade courses at the rate of 3 Highers = 2 A-levels.

	Boys	Girls	TOTAL
Arts	465	665	1,130
Classics	29	48	77
English	220	396	616
Mathematics	458	259	717
Modern Languages	117	302	419
Science/Technology	894	567	1,461
Social Science	506	314	820
TOTAL	2,689	2,551	5,240

SOURCES OF ENTRY DESTINATION OF LEAVERS

TABLE 20H : Sources of Entry

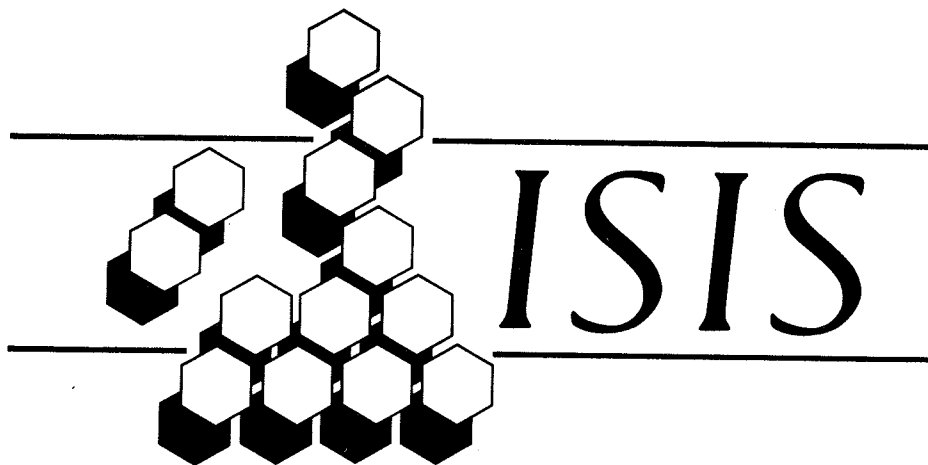
		From Another School		From Overseas		Other	TOTAL
		Indep.	Maint.	Expatriate	Foreign		
BOYS	From Pre-Prep/Nursery/No School	465	122	66	24	2,232	2,909
	From Prep/Primary School	1,031	1,626	178	141	119	3,095
	From Senior School (Pre GCSE)	205	272	106	177	30	790
	From Senior School (Post GCSE)	33	36	49	57	17	192
GIRLS	From Pre-Prep/Nursery/No School	476	149	39	21	2,151	2,836
	From Prep/Primary School	984	1,350	168	163	200	2,865
	From Senior School (Pre GCSE)	386	314	77	166	30	973
	From Senior School (Post GCSE)	106	49	43	68	24	290
TOTAL		3,686	3,918	726	817	4,803	13,950

TABLE 20I : Destination of leavers who have not sat A-level, SCSYS or Scottish Higher exams.

		To Another School			To Further Education	Employment	Other	TOTAL
		Indep.	L.E.A.	Overseas				
BOYS	Leaving at end of Pre-Prep	756	305	66	0	0	20	1,147
	Leaving at end of Prep	926	492	33	14	7	28	1,500
	Leaving immediately after GCSE	120	327	43	931	241	73	1,735
	Others	363	495	167	59	47	77	1,208
GIRLS	Leaving at end of Pre-Prep	454	328	62	0	0	19	863
	Leaving at end of Prep	1,013	437	80	14	1	11	1,556
	Leaving immediately after GCSE	303	364	59	933	139	89	1,887
	Others	392	425	178	72	69	78	1,214
TOTAL		4,327	3,173	688	2,023	504	395	11,110

TABLE 20J : Destination of leavers who have sat A-level, SCSYS or Scottish Higher exams.

			Boys	Girls	TOTAL
Pupils who left to take Higher Education Courses in the U.K. or Overseas	Entrants to Universities, Including Deferred Entry	Arts	32	83	115
		Science	90	47	137
		Engineering/Technology	34	7	41
		Social Science	22	30	52
	Degree Courses at Polytechnic	Arts	14	47	61
		Science	33	29	62
		Engineering/Technology	31	4	35
		Social Science	45	15	60
	All other H.E. Courses	Arts	14	26	40
		Science	5	14	19
		Engineering/Technology	8	2	10
		Social Science	15	14	29
Pupils who left to continue Secondary Education elsewhere		To another Indep. School	15	6	21
		To a Maintained School	30	24	54
Other Pupils who left	For Further Education or Training		33	30	63
	For Employment		57	35	92
	Others		21	12	33
TOTAL			499	425	924



INDEPENDENT SCHOOLS INFORMATION SERVICE

The leaflets and other publications listed below are available from National ISIS, 56 Buckingham Gate, London SW1E 6AG and are supplied on receipt of **two first class stamps for each, except where the price is stated.**

NATIONAL ISIS PUBLICATIONS

PLANNING AN INDEPENDENT EDUCATION — an introductory leaflet for parents interested in sending their children to independent schools.

WHAT IS ISIS? — explains the ISIS organisation.

THE RIGHT START — what preparatory schools can offer your child.

SCHOOL FEES — some ways of planning ahead to reduce costs.

SCHOLARSHIPS AND GRANTS — some ways of receiving help with school fees.

ASSISTED PLACES SCHOOLS — a list of secondary schools in the DES Assisted Places Scheme.

QUESTIONS TO ASK when you visit a school.

INDEPENDENT SCHOOLS: THE LEGAL CASE — by Anthony Lester QC and David Pannick. Price £5 (including postage).

PRIVATE EDUCATION IN EUROPE. — Price £5 (including postage). Available summer 1991.

PRIVATE EDUCATION IN THE U.S.A. AND CANADA — Price £2 (including postage).

PRIVATE EDUCATION IN AUSTRALIA AND NEW ZEALAND — Price £2 (including postage).

PRIVATE EDUCATION IN SOUTHERN AFRICA — Price £5 (including postage).

GOOD COMMUNICATIONS GUIDE — a guide to school public relations and marketing. Price £2.50 (including postage).

BOARDING: EDUCATION FOR LIFE

FIND OUT ABOUT BOARDING

CHOOSING YOUR INDEPENDENT SCHOOL

A guide for parents to 1,400 schools in membership of National ISIS with basic details including fees, pupil numbers, facilities, entry requirements, subjects and 50 pages of guidance on how to choose a school.

Available from bookshops at £4.95 or by post from National ISIS, 56 Buckingham Gate, London SW1E 6AG. 1991-92 edition available Sept. 1991 at £4.95 plus £1.00 p&p.

Analysis by Monkton Combe Computing Service, 1 Church Cottages, Monkton Combe, Bath BA2 7HB.

Printed by Ralph Allen Press Ltd., 4/5 Milk Street, Bath

Published April 1991