

INDEPENDENT SCHOOLS INFORMATION SERVICE

ANNUAL CENSUS 1990

STATISTICAL SURVEY OF INDEPENDENT SCHOOLS

56 Buckingham Gate London SW1E 6AG Telephone 071-630 8793 or 8794

INDEPENDENT SCHOOLS
INFORMATION SERVICE

56 Buckingham Gate, London SW1E 6AG 071-630 8793/4

Director: D. J. Woodhead
Deputy Director (Press & PR): R. C. Davison

NATIONAL ISIS was established in 1972 as an information centre by the leading Associations of independent schools in Britain. It is now part of the Independent Schools Joint Council.

It publishes leaflets and booklets on various aspects of independent education (see inside back cover) and "Choosing Your Independent School," a paperback guide to 1,400 day and boarding schools for boys and girls ages 2 — 19 in the UK and Eire.

There are eight ISIS regions covering the entire United Kingdom which publish handbooks giving details of schools in their areas.

The **ISIS ASSOCIATION** is for friends and supporters of independent education. The annual subscription is £10 for UK members and £12 for overseas members. For further details, please write to the above address.

ISIS INTERNATIONAL helps parents living overseas to find suitable schools for their children. It operates a consultancy service for multi-national companies whose staff require independent schools for their children. For details and costs, please write to the Senior Consultant, ISIS International, at the above address.

INDEX

PAGE			
3	List of Associations		
4 - 7	INTRODUCTION to ISIS Census 1990		
8	ALL	Table 1	Number of schools and pupils
9	COMPARATIVE	Table 2	Comparative totals and staff/pupil ratios for schools in 1989 and 1990 Census
10		Table 3	Number of Pupils and Comparisons with 1989
11		Table 4	Pupils and Fees analysed by Areas
12		Table 5	Fee Ranges
13		Table 6	Average fees
14		Table 7	Contributions to fees
15		Table 8	Expenditure on Buildings and Equipment
16		Table 9	Children with parents overseas and/or in the Armed Forces
17		Table 10	Leavers to Higher Education
		Table 11	School sizes
18		Table 12	Boarding/Day ratio
		Table 13	Boy/Girl ratio
19	NOTES on Tables for Individual Associations		
20	HMC	Table 14A	Number of Pupils and comparisons with 1989
21		Table 14B	Pupils and Fees analysed by areas
22		Table 14C,D,E,F,G	Staffing and Courses of Study
23		Table 14H,I,J	Sources of Entry and Destinations of Leavers
24	SHMIS	Table 15A	Number of Pupils and comparisons with 1989
25		Table 15B	Pupils and Fees analysed by areas
26		Table 15C,D,E,F,G	Staffing and Courses of Study
27		Table 15H,I,J	Sources of Entry and Destinations of Leavers
28	GBA	Table 16A	Number of Pupils and comparisons with 1989
29		Table 16B	Pupils and Fees analysed by areas
30		Table 16C,D,E,F,G	Staffing and Courses of Study
31		Table 16H,I,J	Sources of Entry and Destinations of Leavers
32	GSA	Table 17A	Number of Pupils and comparisons with 1989
33		Table 17B	Pupils and Fees analysed by areas
34		Table 17C,D,E,F,G	Staffing and Courses of Study
35		Table 17H,I,J	Sources of Entry and Destinations of Leavers
36	GBGSA	Table 18A	Number of Pupils and comparisons with 1989
37		Table 18B	Pupils and Fees analysed by areas
38		Table 18C,D,E,F,G	Staffing and Courses of Study
39		Table 18H,I,J	Sources of Entry and Destinations of Leavers
40	IAPS	Table 19A	Number of Pupils and comparisons with 1989
41		Table 19B	Pupils and Fees analysed by areas
42		Table 19C,D,E	Staffing
		Table 19H,I	Sources of Entry and Destinations of Leavers
43	ISAI	Table 20A	Number of Pupils and comparisons with 1989
44		Table 20B	Pupils and Fees analysed by Areas
45		Table 20C,D,E,F,G	Staffing and Courses of Study
46		Table 20H,I,J	Sources of Entry and Destinations of Leavers

INDEPENDENT SCHOOLS INFORMATION SERVICE

Statistical Survey of Independent Schools - January 1990

These tables contain information derived from a survey
carried out in January 1990 among members of:-

- | | |
|-------|---|
| HMC | - predominantly boys' schools whose heads are members of the
Headmasters' Conference and whose governing bodies are members of GBA |
| SHMIS | - predominantly boys' schools whose heads are members of the
Society of Headmasters of Independent Schools and whose governing bodies are members of GBA |
| GBA | - predominantly boys' schools whose governing bodies are members of the
Governing Bodies Association |
| GSA | - girls' schools whose heads are members of the
Girls' Schools Association and whose governing bodies belong to GBGSA |
| GBGSA | - girls' schools whose governing bodies are members of the
Governing Bodies of Girls' Schools Association |
| IAPS | - boys' and girls' schools whose heads are members of the
Incorporated Association of Preparatory Schools |
| ISAI | - boys' and girls' schools whose heads are members of the
Independent Schools Association Incorporated but not of any other Association |

The information relates to January 1990, except that expenditure on buildings
and equipment is for the financial year ending at various dates in 1989.

ISIS (Director: David Woodhead), 56 Buckingham Gate, London SW1E 6AG (Telephone 071-630 8793/4)

ISIS CENSUS 1990 INTRODUCTION

By David Woodhead, Director, National ISIS

Independent schools enter the 1990s with increasing pupil numbers and a rising share of the total school population.

For seven years ISIS-member schools have registered annual rises in pupils attending. This is the longest recorded period of continuous growth.

In 1990 there are 4,638 more children at ISIS schools than a year ago — a rise of one per cent. The biggest increases are among pre-preparatory children.

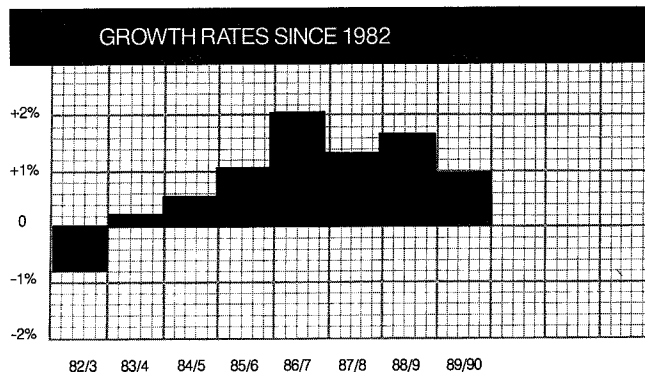
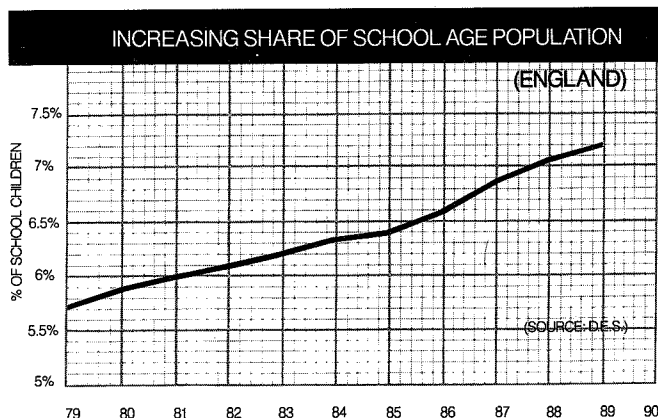
Census returns from schools in January 1990 record 474,203 pupils attending the 1,378 schools in the United Kingdom and Eire which took part in the survey. (Table 1, page 8).

However, comparisons are made between the 1,351 schools which participated in both the 1990 and 1989 surveys. In these schools there were 466,332 pupils aged between 2 and 19, compared with 461,694 a year ago. (Table 2, page 9).

Eighty per cent of all independently-educated pupils are in ISIS-member schools. (Altogether there are 2,500 independent schools in the United Kingdom educating more than 600,000 children).

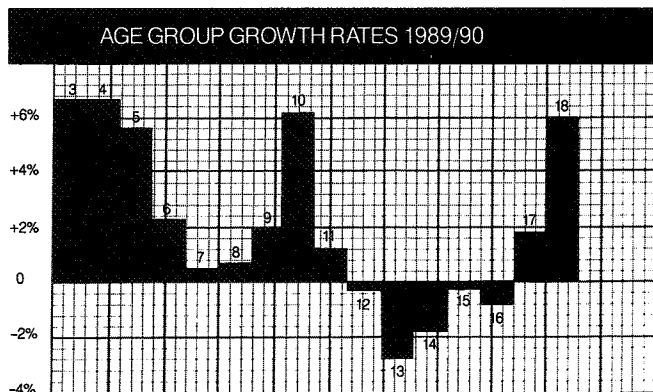
The graphs below show (1) the increasing proportion of children in independent schools in England since 1979, based on Department of Education and Science figures, and (2) growth rates in ISIS-member schools since 1982 (the first year our Census appeared in its present form).

The DES statistics confirm that independent schools are educating an increasing proportion of the school population. This was 5.8 per cent in the late 1970s and is now 7.3 per cent overall. It varies between age groups and different parts of the British Isles. The proportion of sixth-formers (16-19s) who are educated in the independent sector, for example, rises steadily and has now reached 20 per cent.



This increasing 'market share' is accentuated by the continuing decline in the number of children of school age nationally. According to the DES, maintained sector secondary school rolls fell in 1988-89 by 4.1 per cent and primary rolls rose by 1.6 per cent. Secondary numbers will not begin to rise until 1991-92, when the recent increase in primary school rolls works through to secondary schools.

The third graph shows growth rates by pupils' age between 1989 and 1990. This and table 3 confirm the strength of the early and middle years of the age range catered for by preparatory schools and their pre-prep departments — the high points being the 13.5 per cent increase in two-year-olds, the 6.7 per cent rise in three and four-year-olds and the 6.2 per cent rise in 10-year-olds. There are now a record 25,439 children aged four and under.



Falling numbers of 12 to 16-year-olds reflect the steep drop in this age group nationally, whereas the increases of two per cent and six per cent in 17 and 18-year-olds respectively go against the national trend.

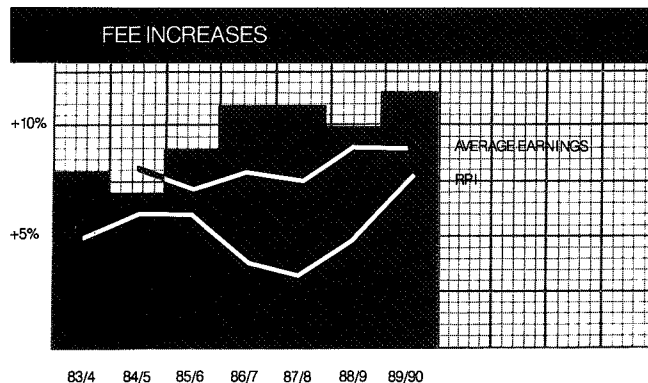
There are 7,551 more day boys and girls (2.1 per cent) than in 1989. The percentage rise among girls again outstrips the boys and confirms the increasing popularity of independent education for girls, who now account for 45.2 per cent of pupils in ISIS schools.

This is also reflected in weekly boarding numbers, which top 10,000 for the first time and show the attraction of weekly boarding to parents with no previous experience of boarding education, parents who are working but who want to see their children every weekend and know they are fully catered for during the week and families who like the wider choice of school which weekly boarding within easy reach of home gives them.

Full boarding, on the other hand, which has declined steadily for the past 40 years, has suffered a steeper than average drop in the past year. Numbers have fallen overall by 3.2 per cent — boys down by 3.7 per cent and girls by 2.4 per cent.

The fourth graph tracks the growth in school fees from 1982. They have averaged 9.7 per cent over that eight-year period and have risen by an average of 11.7 per cent in 1989-90. This latest increase is the highest we have recorded since the ISIS Census has been compiled in its present form. It is a reflection of:

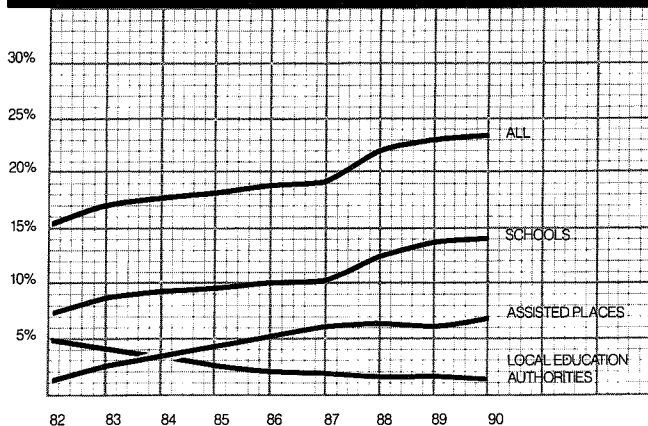
- schools' investment in updated and improved buildings, facilities and equipment (see below),
- the generous staffing which is the reason for so many parents choosing independent education,
- rising staff salaries and wage costs which account for around three-quarters of the expenditure of independent as well as maintained schools and
- rising inflation as measured by the retail prices index, which was 7.7 per cent in 1989.



The overall average increase in teachers' pay nationally was 7.8 per cent, but this does not take full account of incremental rises. The rise in average earnings over the year was 9.1 per cent. (Tables 4 & 6).

If fees are rising, so are contributions towards them from schools and through the DES Assisted Places Scheme which widen the clientele of independent schools by enabling families who could not afford to pay full fees to send their children. (Table 7). More children are receiving help than ever before — a total of 108,256, representing 23.2 per cent of all children in our schools. Of these, 67,070 (14.3 per cent of all children) are being helped by the schools themselves through bursaries and scholarships. The number of assisted place-holders has risen to almost 30,000, while places paid for by local education authorities continue to drop. Increasing help with children's school fees is traced in the fifth graph (below).

PUPILS RECEIVING HELP WITH FEES



The sixth graph shows the amount per pupil spent by schools on buildings and equipment in each year since 1981 and the unprecedentedly steep rise — from £379 to £546 per pupil (44 per cent) — in 1989. In that year schools spent £254.6 million on new buildings and improvements to buildings and equipment, an increase of £79.5 million over the previous year. (Table 8).

There is a change this year in the recording of children from overseas. Table 9 now refers only to new pupils who have joined schools since the previous Census day. Comparisons with earlier years are therefore not possible.

SPENDING ON BUILDINGS & EQUIPMENT

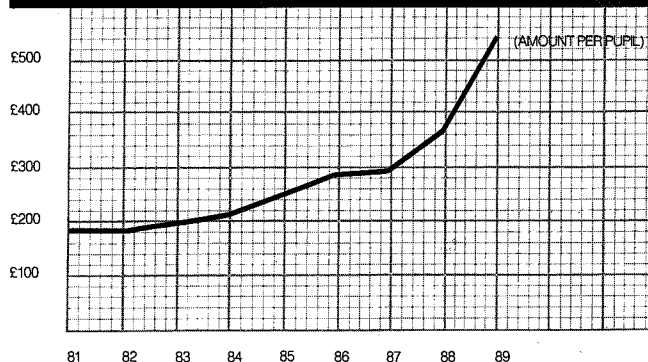


Table 10 has also changed this year. It now records post A-level leavers only, not pupils over 15. Three Associations — GSA, GBGSA and ISAI — include some schools which do not have sixth-forms and which therefore do not offer A-level courses. Their numbers of A-level leavers need to be read with this fact in mind.

GENERAL & ASSOCIATION TABLES

All the general tables are contained on pages 8 to 18. Those which follow (pages 20 to 46) relate to particular Associations of schools, indicated by the initials at the top of each page. This year, for the first time, we show tables separately for the Girls' Schools Association (GSA) and the Governing Bodies of Girls' Schools Association (pages 32 to 39).

ACKNOWLEDGEMENTS

Only one of our 1,379 schools failed to return its Census form. This is the best response ever and I am grateful to the heads, deputy heads, bursars, secretaries and other members of staff of all those schools which co-operated and to the chairmen, president and secretaries of the Associations listed on page two.

Julian Bewick and the Monkton Combe Computing Service worked long hours with great patience and tenacity to produce this survey. They deserve congratulations on producing a document which is valued widely — by journalists, commentators, researchers, educationalists and by the schools themselves — for the detailed information it provides on the major part of the independent sector. The advice of John Widdowson was appreciated by school staff who needed help in completing their returns.

THE INDEPENDENT SECTOR

Figures for pupils at all independent schools in Great Britain, based on statistics from the Department of Education & Science and the Scottish Education Department, are available from National ISIS. These are produced in June each year. Information for Scotland is available separately from ISIS Scotland, 11 Castle Street, Edinburgh EH2 3AH; telephone: 031 220 2106.

TABLE 1

TOTAL NUMBERS OF SCHOOLS, BOARDING AND DAY PUPILS IN CENSUS

N.B. THIS TABLE SHOWS THE NUMBERS OF PUPILS IN ALL 1378 SCHOOLS WHICH TOOK PART IN THE 1990 CENSUS. 1347 SCHOOLS WERE INCLUDED IN THE 1989 CENSUS, SO TOTALS ON THIS PAGE SHOULD NOT BE COMPARED WITH THOSE FOR 1989.

			HMC	SHMIS	GBA	GSA	GBGSA	IAPS	ISAI	TOTAL
Number of schools in census			230	47	15	244	23	540	279	1,378
Number of member schools			231	47	15	244	23	540	279	1,379
Educational Charities			228	47	15	239	21	435	138	1,123
Limited Companies			0	0	0	2	0	42	55	99
Proprietary			2	0	0	1	1	61	79	144
PUPILS	FULL BOARDERS	Boys	35,462	5,606	1,427	6	32	14,952	2,433	59,918
		Girls	7,232	1,326	633	19,442	516	4,163	1,490	34,802
	WEEKLY BOARDERS	Boys	1,761	359	24	3	2	2,908	604	5,661
		Girls	336	94	8	2,955	184	823	344	4,744
	DAY	Boys	90,421	6,900	2,961	1,529	798	63,122	27,293	193,024
		Girls	17,967	2,675	1,367	87,799	7,612	29,255	29,379	176,054
	TOTAL	Boys	127,644	12,865	4,412	1,538	832	80,982	30,330	258,603
		Girls	25,535	4,095	2,008	110,196	8,312	34,241	31,213	215,600
	GRAND TOTAL		153,179	16,960	6,420	111,734	9,144	115,223	61,543	474,203

TABLE 2

NUMBER OF SCHOOLS, BOARDING AND DAY PUPILS, S/P RATIOS

Note: Numbers for 1990 are printed in **BOLD** type,
Numbers for 1989, together with % changes, are printed below them.

			HMC	SHMIS	GBA	GSA	GBGSA	IAPS	ISAI	TOTAL	
Number of Schools			230	45	14	242	21	535	264	1,351	
PUPILS	FULL BOARDERS	Boys	35,462	5,606	1,427	6	32	14,825	2,433	59,791	
			36,856	5,846	1,406	8	17	15,522	2,436	62,091	-3.70%
		Girls	7,232	1,326	633	19,442	476	4,116	1,485	34,710	
			6,959	1,368	624	20,354	546	4,136	1,580	35,567	-2.41%
	WEEKLY BOARDERS	Boys	1,761	359	24	3	2	2,908	604	5,661	
			1,613	380	38	3		2,939	587	5,560	+1.82%
		Girls	336	94	8	2,955	184	819	297	4,693	
			228	106	9	2,939	168	774	326	4,550	+3.14%
	DAY	Boys	90,421	6,409	2,562	1,529	769	62,849	25,718	190,257	
			90,184	6,238	2,592	1,387	668	60,483	25,050	186,602	+1.96%
		Girls	17,967	2,259	1,357	86,612	6,766	28,705	27,554	171,220	
			17,208	2,126	1,338	85,515	6,703	27,451	26,983	167,324	+2.33%
	TOTAL	Boys	127,644	12,374	4,013	1,538	803	80,582	28,755	255,709	
			128,653	12,464	4,036	1,398	685	78,944	28,073	254,253	+0.57%
		Girls	25,535	3,679	1,998	109,009	7,426	33,640	29,336	210,623	
			24,395	3,600	1,971	108,808	7,417	32,361	28,889	207,441	+1.53%
GRAND TOTAL			153,179	16,053	6,011	110,547	8,229	114,222	58,091	466,332	
			153,048	16,064	6,007	110,206	8,102	111,305	56,962	461,694	+1.00%
			+0.09%	-0.07%	+0.07%	+0.31%	+1.57%	+2.62%	+1.98%	+1.00%	
STAFF/PUPIL RATIO	- raw	1:11.2	1:10.0	1:10.0	1:10.9	1:10.6	1:11.4	1:12.2	1:11.2		
		1:11.4	1:10.3	1:10.1	1:11.2	1:10.6	1:11.6	1:12.4	1:11.4		
	- weighted	1:14.7	1:12.2	1:12.3	1:12.9	1:12.2		1:12.8	1:13.1		
		1:15.0	1:12.5	1:12.4	1:13.2	1:12.2		1:13.0	1:13.3		

Note: For the weighted ratios, each sixth form pupil is counted as two.

TABLE 3

NUMBER OF PUPILS IN JANUARY 1990 AND CHANGES SINCE 1989

Figures for 1990 are printed in **BOLD**, those for 1989 and % changes are printed below.

AGE ON 31 AUG 89	BOYS			GIRLS			TOTAL
	BOARDERS FULL	BOARDERS WEEKLY	DAY	BOARDERS FULL	BOARDERS WEEKLY	DAY	
2	0	0	1,182	0	0	1,238	2,420
3	0	0	1,036	0	0	1,103	2,139
4	0	0	+14.1%	0	0	+12.2%	+13.1%
5	0	0	4,098	0	0	4,112	8,210
6	0	0	3,898	0	0	3,802	7,700
7	0	0	+5.1%	0	0	+8.2%	+6.6%
8	0	0	7,519	0	0	7,265	14,784
9	2	0	7,045	0	0	6,811	13,858
10	5	1	+6.7%	5	1	+6.7%	+6.7%
11	13	9	8,155	14	3	7,966	16,133
12	13	9	7,636	14	3	7,592	15,267
13	-61.5%	-88.5%	+6.8%	-64.3%	-66.7%	+4.9%	+5.7%
14	55	17	8,376	52	7	8,059	16,566
15	85	16	+3.5%	50	22	7,926	16,195
16	552	102	+4.0%	206	51	9,636	21,201
17	601	110	+4.0%	238	61	9,466	21,086
18	1,693	276	-13.4%	589	122	10,823	25,847
19	1,841	301	+2.0%	645	143	10,651	25,687
20	2,494	454	-8.7%	1,063	210	+1.6%	+0.6%
21	2,566	477	-3.8%	1,105	261	+3.7%	+2.1%
22	3,372	616	-2.2%	1,653	365	11,964	31,862
23	3,363	604	+13.0%	1,690	323	11,088	29,991
24	+0.3%	+2.0%	+7.5%	-2.2%	+13.0%	+7.9%	+6.2%
25	4,592	837	3,115	593	15,879	43,323	63,233
26	4,839	878	3,215	511	15,474	42,796	62,796
27	-5.1%	-4.7%	+2.4%	-3.1%	+16.0%	+2.6%	+1.2%
28	5,495	1,057	3,632	576	15,621	43,940	63,940
29	5,789	986	3,805	551	15,381	44,036	64,036
30	-5.1%	+7.2%	+0.2%	-4.5%	+4.5%	+1.6%	-0.2%
31	7,444	535	4,201	561	15,323	44,523	64,523
32	8,001	520	4,493	567	15,405	45,787	65,787
33	-7.0%	+2.9%	-6.5%	-1.1%	-0.5%	-2.8%	-2.8%
34	8,382	518	4,749	575	15,288	46,025	66,025
35	8,621	503	4,702	624	15,462	46,621	67,621
36	-2.8%	+3.0%	+1.0%	-7.9%	-1.1%	-1.3%	-1.3%
37	8,833	505	4,815	665	15,374	46,519	67,519
38	9,017	483	5,044	622	14,991	46,618	67,618
39	-2.0%	+4.6%	-4.5%	+6.9%	+2.6%	-0.2%	-0.2%
40	8,335	376	5,423	512	11,203	38,985	50,985
41	8,664	356	5,454	500	11,130	39,280	50,280
42	-3.8%	+5.6%	-0.6%	+2.4%	+0.7%	-0.8%	-0.8%
43	7,320	336	4,541	423	9,213	33,362	43,362
44	7,408	288	4,481	342	9,131	32,731	42,731
45	-1.2%	+16.7%	+4.0%	+1.3%	+23.7%	+0.9%	+1.9%
46	1,090	30	601	32	556	3,195	4,693
47	1,123	26	551	20	622	3,014	4,632
48	-2.9%	+15.4%	+9.1%	+60.0%	-10.6%	+6.0%	+6.0%
49	129	1	65	0	73	319	439
50	158	3	80	0	88	368	506
51	-18.4%	-66.7%	-18.7%	-17.0%	-13.3%	-17.0%	-13.3%
52	59,791	5,661	34,710	4,693	171,220	466,332	246,332
53	62,091	5,560	35,567	4,550	167,324	461,694	246,694
54	-3.7%	+1.8%	+2.0%	-2.4%	+3.1%	+2.3%	+1.0%

ALL NUMBERS AND FEES BY AREAS

TABLE 4

ANALYSIS OF PUPIL NUMBERS AND AVERAGE TERMLY FEES
(PERCENT CHANGES ARE BASED ON 1989 FIGURES)

AREA	No. of Schools	BOYS			GIRLS			TOTAL			Boarding Fee	Weekly Boarding Fee	Day Fee Boarding Schools	Day Fee Day Schools
		Boarding Full	Weekly	Day	Boarding Full	Weekly	Day	Boarding Full	Weekly	Day				
Scotland	55	3102	95	10750	1958	103	10196	5060	198	20946	£2046	£1903	£1143	£888
The North	195	-2.1%	+26.7%	+1.0%	-0.5%	-1.9%	+1.3%	-1.5%	+10.0%	+1.2%	+11.8%	+10.7%	+12.5%	+11.3%
		5767	425	39065	3675	294	31241	9442	719	70306	£1857	£1636	£1102	£756
		-6.1%	+5.2%	+1.5%	-0.9%	-8.7%	+3.1%	-4.1%	-1.0%	+2.2%	+10.7%	+10.8%	+10.1%	+10.5%
Wales	30	1279	130	2865	732	135	3118	2011	265	5983	£1854	£1638	£1188	£706
		-4.6%	+11.1%	+0.1%	+5.6%	-6.9%	+2.8%	-1.1%	+1.1%	+1.5%	+8.5%	+10.2%	+9.7%	+14.2%
W Midlands	146	7139	755	18243	4289	683	16511	11428	1438	34754	£1976	£1756	£1273	£808
		-3.3%	+0.4%	+3.0%	-4.7%		+4.6%	-3.9%	+0.2%	+3.7%	+12.0%	+12.2%	+12.7%	+11.1%
E Midlands	167	8434	708	21245	4482	946	20183	12916	1654	41428	£2010	£1715	£1204	£873
		-4.1%	-3.7%	+2.1%	-4.7%	+9.6%	+2.8%	-4.3%	+3.5%	+2.4%	+10.3%	+9.9%	+12.1%	+13.7%
East Anglia	92	3656	422	11554	2090	273	10466	5746	695	22020	£1969	£1732	£1234	£751
		-3.7%	+5.5%	+1.3%	-2.1%	+6.2%	+1.1%	-3.1%	+5.8%	+1.2%	+10.9%	+10.7%	+11.5%	+10.3%
South & West	153	10457	588	15982	6793	834	14732	17250	1422	30714	£1974	£1734	£1187	£785
		-4.7%	+9.7%	+0.8%	-1.9%	+8.5%	+0.4%	-3.6%	+9.0%	+0.6%	+10.1%	+10.0%	+11.7%	+14.1%
Greater London	161	1616	502	30728	309	70	27596	1925	572	58324	£1977	£2095	£1310	£979
		-6.5%	-3.5%	+1.4%	-9.6%	-11.4%	+1.5%	-7.0%	-4.5%	+1.5%	+11.7%	+14.0%	+11.5%	+12.0%
South East	338	17789	1935	33912	10162	1332	34917	27951	3267	68829	£2040	£1882	£1322	£878
		-2.2%	+1.0%	+4.2%	-2.1%	+2.2%	+2.4%	-2.2%	+1.5%	+3.3%	+11.8%	+12.8%	+12.7%	+12.0%
Ireland	14	552	101	5913	220	23	2260	772	124	8173	£1456	£1464	£772	£696
		-4.0%	-4.7%	-1.2%	+2.8%	-4.2%	+3.5%	-2.2%	-4.6%	+0.1%	+6.0%	+10.4%	+12.0%	+14.3%
All	1351	59791	5661	190257	34710	4693	171220	94501	10354	361477	£1978	£1776	£1229	£853
		-3.7%	+1.8%	+2.0%	-2.4%	+3.1%	+2.3%	-3.2%	+2.4%	+2.1%	+11.1%	+11.5%	+12.0%	+11.9%

TABLE 5

Numbers of schools whose maximum termly fees are within £25 of the figures shown											
	HMC	BOARD DAY	SHMIS	BOARD DAY	GBA	BOARD DAY	GSA	BOARD DAY	GGSA	TAPS	ISAI
		BOARD DAY	BOARD DAY	BOARD DAY	BOARD DAY	BOARD DAY	BOARD DAY	BOARD DAY	BOARD DAY	BOARD DAY	BOARD DAY
£350											
£400		1									
£450								1			
£500		1									
£550											
£600		2							2		
£650											
£700		3									
£750		1	2					1	1		
£800		9	1				6	5			
£850		4	1			1	22	1	30		
£900		7					15	2	2		
£950		13	1				26	2	35		
£1000		16	2			5	24	4	52		
£1050		13	2				20		30		
£1100		11	5	1			18	3	1	34	
£1150		6	6	1			17				
£1200		11	5	1			15	2	2	29	1
£1250		5	1				5			32	1
£1300		8	3	1			8		2	33	1
£1350	3	6	4	2			11	1	1	48	3
£1400		10	2	1			11	1	8	25	2
£1450		9				1	9		4	17	3
£1500		2	4	1		1	6		11	21	
£1550		1	3		1		7		18	8	6
£1600		5	1				6		11	1	5
£1650		2	7				3	1	13	2	5
£1700		13	1	1		1	3		20	2	2
£1750		1	7		1		4	2	1	25	1
£1800		3	5			9	2	1	27	4	5
£1850		6	4	2		5	1	2	28	2	2
£1900		6	4	1		8					
£1950		5	8	2		10			27	4	
£2000		8	7	5		8			20	2	2
£2050		7	4	2		6	1		20	2	1
£2100		4	1	1	1	3		3	13	2	
£2150		3	4	4		8			5	1	1
£2200		7	2	5		6			1	2	2
£2250		6	4	4		11			2	1	1
£2300		3	1		1	9			3		
£2350		8				6					
£2400		5	1			8					
£2450		7		1		4					
£2500		6				4					
£2550		14	4			2					
£2600		8				4					
£2650		7				1					
£2700		10				1					
£2750		6				1					
£2800		2									
£2850		6									
£2900		5									
£2950		1									
£3000		1									

This table shows the spread of fees for almost all schools which completed the Census. It omits a few schools which, due to exceptional circumstances (e.g. they are specialist schools), have untypically high or low fees.

This table shows the spread of fees for almost all schools which completed the Census. It omits a few schools which, due to exceptional circumstances (e.g. they are specialist schools), have untypically high or low fees.

TABLE 6

INFLATION RATES, EARNINGS INCREASES, TEACHERS' AWARDS AND AVERAGE TERMLY FEES (JANUARY TERM 1990)

YEAR	INFLATION	EARNINGS	BURNHAM/ BAKER	HMC		SHMIS		GBA		GSA		GBGSA		IAPS		ISAI	
				BOARD	DAY	BOARD	DAY	BOARD	DAY	BOARD	DAY	BOARD	DAY	BOARD	DAY		
1985				1416	812	1332	814	1226	618	1235	643			1056	635	1075	471
	6.1%	7.2%	6.9%	8.1%	7.8%	7.4%	7.0%	8.9%	7.3%	8.5%	7.6%			10.9%	8.3%	8.9%	8.5%
1986				1531	875	1431	871	1335	663	1340	692			1171	688	1171	511
	3.9%	8.0%	7.3%	10.8%	10.5%	13.2%	8.6%	29.3%	24.4%	13.1%	11.4%			9.9%	11.0%	13.1%	12.5%
1987				1697	967	1620	946	1726	825	1515	771			1287	764	1324	575
	3.3%	7.7%	16.4%	12.1%	11.9%	9.3%	8.8%	3.9%	12.5%	12.5%	12.5%			11.9%	11.8%	7.8%	13.0%
1988.				1902	1082	1770	1029	1793	928	1705	867			1440	854	1427	650
	4.9%	9.4%	6.3%	9.9%	10.2%	10.5%	10.5%	4.7%	8.4%	10.9%	11.8%			9.0%	10.1%	9.4%	10.8%
1989				2090	1192	1955	1137	1878	1006	1890	969	1699	840	1570	940	1561	720
	7.7%	9.1%	7.8%	10.4%	11.3%	10.4%	10.6%	8.0%	13.1%	11.9%	12.4%	10.0%	12.7%	11.2%	12.0%	13.5%	12.8%
1990				2308	1327	2158	1258	2029	1138	2114	1089	1869	947	1746	1053	1771	812

NOTES

- i) Inflation rates are from January to January, based on the increase in the Retail Prices Index.
- ii) Earnings figures are the increases in average earnings, January to January. (Department of Employment).
- iii) The latest Burnham/Baker figures are the average increases in teachers' pay, April 1988 to March 1989.
- iv) A table showing the range of maximum termly fees is printed on page 12.

TABLE 7

NUMBER OF PUPILS RECEIVING CONTRIBUTIONS TO FEES (JANUARY 1990)

Numbers for 1990 are printed in **BOLD** type, numbers for 1989 are printed below them.

	HMC	SHMIS	GBA	GSA	GBGSA	IAPS	ISAI	TOTAL
from Local Education Authorities	5,351	750	88	526	19	282	532	7,548
	6,432	742	96	634	35	280	525	8,744
from the school	25,785	3,690	1,385	14,139	1,027	14,973	6,071	67,070
	25,011	3,762	1,279	13,854	970	14,327	5,647	64,850
from Government Assisted Places Scheme	18,884	572	371	8,930	314	589	179	29,839
	17,664	554	374	8,993	323	396	77	28,381
from all other known sources	1,654	261	39	784	40	756	265	3,799
	1,677	281	51	868	37	783	288	3,985
TOTALS	51,674	5,273	1,883	24,379	1,400	16,600	7,047	108,256
	50,784	5,339	1,800	24,349	1,365	15,786	6,537	105,960

TABLE 8

NEW BUILDINGS AND EQUIPMENT, 1989

Figures for 1989 are printed in **BOLD** type, those for 1988 are printed below them.

	HMC	SHMIS	GBA	GSA	GBGSA	IAPS	ISAI	TOTAL
Amount spent on new buildings								
Total (in millions of pounds)	82.1 44.4	4.6 4.8	3.6 3.6	35.9 22.3	2.5 1.0	38.9 26.4	11.7 7.9	179.4 110.4
Per Pupil (in pounds)	536 289	286 301	601 594	324 202	304 125	340 237	201 138	384 239
Amount spent on improvements to buildings and equipment								
Total (in millions of pounds)	39.4 32.8	3.3 1.8	1.3 2.4	14.0 11.6	0.8 0.7	12.6 11.3	3.8 4.0	75.2 64.7
Per Pupil (in pounds)	257 214	208 114	209 402	126 105	100 85	110 101	64 70	161 140
TOTAL								
Total (in millions of pounds)	121.6 77.2	7.9 6.7	4.9 6.0	49.9 33.9	3.3 1.7	51.6 37.7	15.4 11.9	254.6 175.1
Per Pupil (in pounds)	793 504	494 415	810 997	451 307	405 211	451 338	265 209	546 379

TABLE 9

NEW PUPILS WHOSE PARENTS LIVE OVERSEAS AND/OR ARE IN THE ARMED FORCES

Numbers of **NEW** pupils in 1990 are printed in **BOLD** type.

Numbers relating to **ALL PUPILS** in 1989 are printed below.

(Direct comparisons will be available again in 1991.)

	HMC	SHMIS	GBA	GSA	GBGSA	IAPS	ISAI	TOTAL
<u>British pupils whose parents:</u>								
live abroad (excl.Armed Forces)	974	165	44	515	6	589	100	2,393
	4,651	629	212	2,515	46	1,920	323	10,296
serve in Armed Forces	888	267	28	528	21	1,124	511	3,367
	3,848	1,475	184	3,438	129	4,923	2,081	16,078
<u>Foreign pupils whose permanent homes are in:</u>								
Africa	208	61	19	135	25	121	64	633
	698	158	73	578	54	329	229	2,119
U.S.A.	96	14	9	54	12	80	355	620
	243	32	17	119	23	175	643	1,252
Canada	23	4	0	13	0	23	32	95
	73	18	1	33	2	36	70	233
Central and S America	46	10	19	55	0	34	23	187
	112	23	12	112	8	38	26	331
Middle East	83	18	7	48	3	49	53	261
	214	84	19	143	24	82	108	674
Asia(incl.Far East)	683	232	88	529	84	216	339	2,171
	1,873	429	173	1,359	143	339	554	4,870
Australasia	29	16	0	33	2	41	27	148
	107	20	9	65	7	60	49	317
Europe(excl.U.K.)	457	120	45	337	50	253	278	1,540
	947	189	80	510	58	367	443	2,594
Total Foreign Pupils	1,625	475	187	1,204	176	817	1,171	5,655
	4,267	953	384	2,919	319	1,426	2,122	12,390
<u>Total British and Foreign</u>								
<u>pupils whose parents live</u>	2,599	640	231	1,719	182	1,406	1,271	8,048
<u>overseas (excl.Armed Forces).</u>	8,918	1,582	596	5,434	365	3,346	2,445	22,686

TABLE 10

POST A-LEVEL LEAVERS

	HMC	SHMIS	GBA	GSA	GBGSA	ISAI
Post A-level Leavers *	22,184	1,618	694	9,330	552	1,176
% to Higher Education	76	64	65	75	69	59
% to University	56	33	42	52	46	33
% of University entrants to:						
Arts	35	37	25	49	49	29
Science	31	37	30	31	34	35
Engineering/Technology	13	12	15	5	6	14
Social Science	21	14	30	15	11	22

* Note - GSA, GBGSA and ISAI include a significant number of schools which do not have sixth forms; pre A-level leavers do not appear in this table.

TABLE 11

NUMBER OF SCHOOLS

SCHOOL SIZE (PUPILS)	HMC	SHMIS	GBA	GSA	GBGSA	IAPS	ISAI
0 - 50			2	2		3	7
50 - 100						39	23
100 - 150	1		1	8	3	99	66
150 - 200		4	2	18	3	138	57
200 - 250	2	6		15	1	113	45
250 - 300	7	12		20	2	71	28
300 - 350	15	11	3	25	1	33	17
350 - 400	19	1		22	1	22	14
400 - 450	17	1	1	27	3	12	5
450 - 500	20	1	1	16	4	1	4
500 - 550	13	3	1	20	2	4	3
550 - 600	19	2	1	16	1	1	4
600 - 650	12	3	1	10	1	1	1
650 - 700	20	2		12		1	1
700 - 750	14		1	7			
750 - 800	10			4	1	1	1
800 - 850	11			7			1
850 - 900	13	1	1	2	2		
900 - 950	3			2			1
950 - 1000	9			3			
1000 - 1050	4			3		1	
1050 - 1100	2			3			
1100 - 1150	4			3			
1150 - 1200	4			2			
1200 - 1250	1		1				1
1250 - 1300	1						
1300 - 1350							
1350 - 1400	2						
1400 - 1450	2						
1450 - 1500							
1500 - 1550							
1550 - 1600	1						
1600 - 1650	1						
1650 - 1700							
1700 - 1750							
1750 - 1800							
1800 - 1850							
1850 - 1900							
1900 - 1950	1						
1950 - 2000							
2000 - 2050							
2050 - 2100	1						
2100 - 2150							
2150 - 2200	1						
2200 - 2250							
2250 - 2300							

TABLE 12
Boarding/Day Ratio

	NUMBER OF SCHOOLS						
	HMC	SHMIS	GBA	GSA	GBGSA	IAPS	ISAI
% BOARDERS							
0 - 5	72	6	5	116	12	227	215
5 - 10	17	2		8	4	31	6
10 - 15	8	2	2	7		26	3
15 - 20	11	1	1	7		23	7
20 - 25	7	1		9		38	9
25 - 30	7	3	1	8	1	24	4
30 - 35	5	1		5	1	19	1
35 - 40	2	1		6		27	3
40 - 45	8	2	2	7	1	17	4
45 - 50	6			7		18	4
50 - 55	6	4		7	2	12	2
55 - 60	6	3		5	1	6	3
60 - 65	7	3		1	1	9	1
65 - 70	5			11		10	3
70 - 75	4	4	1	6		10	4
75 - 80	14	4	2	4		10	6
80 - 85	11	3		8		7	
85 - 90	7	2		6		3	2
90 - 95	9	1		5		10	1
95 - 100	18	4	1	11		13	1

TABLE 13
Boy/Girl Ratio

	NUMBER OF SCHOOLS						
	HMC	SHMIS	GBA	GSA	GBGSA	IAPS	ISAI
% BOYS							
0 - 5			1	220	14	40	36
5 - 10				16	2	8	12
10 - 15				6		10	5
15 - 20				2	2	7	8
20 - 25					2	7	6
25 - 30						5	1
30 - 35						1	9
35 - 40		2				1	11
40 - 45	1	1				1	6
45 - 50	7	3	2			13	23
50 - 55	17		3			24	31
55 - 60	13	11				31	31
60 - 65	16	1	2			47	23
65 - 70	14	3				49	12
70 - 75	8	1				32	5
75 - 80	3	3				22	6
80 - 85	10	2				8	5
85 - 90	28	1				10	2
90 - 95	29	2	1			18	2
95 - 100	84	17	6			183	35

NOTES ON TABLES FOR INDIVIDUAL ASSOCIATIONS

Tables on the following pages show changes that occurred between January 1989 and January 1990.

In order that fair comparisons can be made, only those schools which completed the census in BOTH years have figures included in the tables.

A few schools changed the associations to which they belong during the year between the two census days. Their figures are included in tables for their current associations.

Age ranges for schools in England, Wales and Ireland are calculated using 1st September as a base. Those in Scotland use 1st January.

Tables 14A to 20A show numbers of pupils in the schools. Current numbers are shown in bold print, with last year's figures printed below. Percentage changes are printed as the third line of each group of three lines. In cases of large percentage change, it is wise to look at the figures above to see if the change is significant.

TABLES 14B to 20B show the numbers of pupils and the average fees by areas. A blank entry in a fees or numbers column indicates that there is no school of the relevant category in the area. A blank in the per cent change row means there is no significant change.

TABLES 14C, D and E to 20C, D and E deal with staffing.

TABLES 14F and G to 20F and G deal with numbers and courses of study of sixth form pupils.

TABLES 14H, I and J to 20H, I and J show the sources of entry and destination of leavers. Proportions shown in each category are believed to be accurate, but total numbers are higher than those shown. These tables are amongst the most difficult for schools to complete accurately as sources and destinations are not always known.

HMC NUMBER OF PUPILS

TABLE 14A

NUMBER OF PUPILS IN JANUARY 1990 AND CHANGES SINCE 1989

Figures for 1990 are printed in **BOLD**, those for 1989 and % changes are printed below.

AGE ON 31 AUG 89	BOYS		GIRLS		TOTAL	
	BOARDS FULL	DAY WEEKLY	BOARDS FULL	DAY WEEKLY		
2	0	0	0	0	0	0
	0	0	0	0	0	2
3	0	-100.0%	0	0	16	-100.0%
	0	32	0	0	39	48
	0	35	0	0	74	74
4	0	-8.6%	0	0	-59.0%	-35.1%
	0	236	0	0	136	372
	0	268	0	0	149	417
	0	-11.9%	0	0	-8.7%	-10.8%
5	0	476	0	0	251	727
	0	455	0	0	235	690
	0	+4.6%	0	0	+6.8%	+5.4%
6	0	513	0	0	256	769
	0	490	0	0	262	752
	0	+4.7%	0	0	-2.3%	+2.3%
7	3	1,066	3	1	353	1,428
	0	1,073	2	1	386	1,462
	0	-0.7%	0	0	-8.5%	-2.3%
8	22	1,703	2	1	515	2,244
	22	1,661	6	1	502	2,193
	0	+2.5%	0	0	+2.6%	+2.3%
9	37	2,150	4	3	557	2,755
	54	2,133	15	4	524	2,736
	-31.5%	+0.8%	-73.3%	-25.0%	+6.3%	+0.7%
10	174	3,041	43	6	652	3,934
	185	2,809	58	4	605	3,671
	-5.9%	+8.3%	-25.9%	+50.0%	+7.8%	+7.2%
11	738	9,104	243	9	1,840	12,003
	726	9,135	253	2	1,674	11,858
	+1.7%	-0.3%	-4.0%	+350.0%	+9.9%	+1.2%
12	1,118	9,938	329	10	1,968	13,460
	1,196	10,085	339	7	1,793	13,518
	-6.5%	-1.5%	-2.9%	+42.9%	+9.8%	-0.4%
13	5,642	306	800	44	2,129	21,966
	6,031	281	776	20	2,078	22,419
	-6.5%	+8.9%	+3.1%	+120.0%	+2.5%	-2.0%
14	6,602	343	898	26	2,110	23,268
	6,868	322	774	40	2,027	23,299
	-3.9%	+6.5%	-16.0%	-35.0%	+4.1%	-0.1%
15	6,920	336	932	48	2,083	23,399
	7,128	314	959	33	1,921	23,589
	-2.9%	+7.0%	-2.8%	+45.5%	+8.4%	-0.8%
16	6,920	276	2,019	91	2,681	23,541
	7,262	265	1,969	65	2,601	23,838
	-4.7%	+4.2%	-2.5%	+40.0%	+3.1%	-1.2%
17	6,334	290	1,780	90	2,268	21,208
	6,373	230	1,630	51	2,234	20,607
	-0.6%	+26.1%	+9.2%	+76.5%	+1.5%	+2.9%
18	867	19	168	7	142	1,929
	897	17	158	0	169	1,764
	-3.3%	+11.8%	+38.8%	0	-16.0%	+9.4%
19	85	0	11	0	10	128
	114	1	20	0	9	159
	-25.4%	-100.0%	-45.0%	0	+11.1%	-19.5%
TOTAL	35,462	1,761	7,232	336	17,967	153,179
	36,856	1,613	6,959	228	17,208	153,048
	-3.8%	+9.2%	+3.9%	+47.4%	+4.4%	+0.1%

HMC NUMBERS AND FEES BY AREAS

TABLE 14B

ANALYSIS OF PUPIL NUMBERS AND AVERAGE TERMLY FEES
(PERCENT CHANGES ARE BASED ON 1989 FIGURES)

AREA	No. of Schools	BOYS				GIRLS				TOTAL		Boarding Fee	Weekly Boarding Fee	Day Fee Boarding Schools	Day Fee Day Schools
		Boarding			Day	Boarding			Day	Boarding					
		Full	Weekly			Full	Weekly			Full	Weekly				
Scotland	18	2095	5	8624	733	2	4084	2828	7	12708	£2287	£2270	£1264	£901	
The North	42	-1.6%	+400.0%	-0.2%	+3.7%		+2.4%	-0.3%	+600.0%	+0.6%	+12.2%	+10.2%	+13.0%	+13.9%	
		3335	134	24573	624	56	3207	3959	190	27780	£2172	£1797	£1282	£846	
Wales	4	-4.4%	+14.5%	+1.0%	+16.2%	+115.4%	+16.5%	-1.7%	+32.9%	+2.5%	+11.1%	+12.6%	+10.2%	+10.2%	
		764		580	130		75	894		655	£1939		£1327		
W Midlands	26	-1.7%		+6.2%	-2.3%		-11.8%	-1.8%		+3.8%	+9.0%		+11.1%		
		4465	100	8208	987	20	2500	5452	120	10708	£2487	£2399	£1623	£906	
E Midlands	24	-3.6%	+14.9%	-1.5%	+0.3%		+2.0%	-2.9%	+12.1%	-0.7%	+11.1%	+10.5%	+11.6%	+7.6%	
		5235	221	8467	741	38	708	5976	259	9175	£2382	£2082	£1487	£1128	
East Anglia	14	-4.2%	+4.2%	+1.5%	-2.8%	+81.0%	+15.9%	-4.1%	+11.2%	+2.4%	+10.7%	+7.7%	+13.1%	+14.2%	
		1618	103	4246	501	53	1415	2119	156	5661	£2199	£1988	£1438	£1170	
South & West	30	-6.5%	+10.8%	+0.9%	+0.2%	+51.4%	+4.0%	-5.0%	+21.9%	+1.6%	+9.9%	+7.5%	+11.7%	+11.4%	
		6165	98	7550	1545	55	1722	7710	153	9272	£2267	£2125	£1413	£924	
Greater London	23	-3.5%	-3.0%	-1.0%	+3.8%	+71.9%	-7.1%	-2.2%	+15.0%	-2.2%	+9.5%	+8.1%	+11.5%	+10.7%	
		1270	367	14757	40	28	804	1310	395	15561	£2490	£2770	£1532	£1173	
South East	41	-5.9%	+1.1%	+1.2%	+2.6%	-6.7%	+0.2%	-5.7%	+0.5%	+1.1%	+11.8%	+11.4%	+11.9%	+11.2%	
		10096	685	8303	1760	83	1631	11856	768	9934	£2442	£2118	£1679	£1063	
Ireland	8	-3.3%	+16.1%	-0.1%	+6.6%	+31.7%	+6.0%	-1.9%	+17.6%	+0.9%	+11.2%	+12.8%	+11.1%	+14.4%	
		419	48	5113	171	1	1821	590	49	6934	£1510	£1702	£778	£696	
All	230	-7.5%	-2.0%	-2.5%	+8.9%		+3.1%	-3.3%	-2.0%	-1.1%	+5.6%	+10.2%	+7.8%	+14.3%	
		35462	1761	90421	7232	336	17967	42694	2097	108388	£2313	£2089	£1466	£964	
		-3.8%	+9.2%	+0.3%	+3.9%	+47.4%	+4.4%	-2.6%	+13.9%	+0.9%	+10.7%	+10.4%	+11.5%	+11.4%	

HMC

TABLE 14C FULL TIME STAFF

	GRADUATES			NON-GRADUATES		TOTAL
	Math	Sci.	Other	Qual.	Non-Qual.	
MEN	1251	2485	6297	665	52	10750
WOMEN	221	323	1299	389	10	2242

TABLE 14D PART TIME STAFF

	GRADUATES		NON-GRADUATES		TOTAL
	MEN	WOMEN	MEN	WOMEN	
Number	319	810	175	353	1657
Aggregate number of hours per week.	3400	8448	1575	3558	16981

TABLE 14F

NUMBER OF SIXTH FORM PUPILS

Number of Pupils who have completed their GCSE or (in Scotland) their Standard Grades. Pupils who are re-taking some of these exams are included. Each first and second year sixth form pupil is included once.			
	BOYS	GIRLS	TOTAL
Number on A-level or (in Scotland) Higher Grade or CSYS Courses	36514	9343	45857
Number on O-level/CSE/GCSE/Standard Grade re-take Courses	970	160	1130
Number on other Courses	221	122	343
TOTAL	37705	9625	47330

TABLE 14E FULL TIME STAFF CHANGES

STAFFING

NUMBER	Coming from	Going to
Independent Schools	446	403
Maintained Schools	358	111
University, Polytechnic or Training Coll.	306	43
Industry, etc.	61	59
Other (Incl. Retirement)	100	403
TOTAL	1271	1019

TABLE 14G SIXTH FORM PUPILS ANALYSED BY COURSE OF STUDY

COURSES OF STUDY

Each Sixth Form pupil is included once for each A-level or SCSSYS course being studied. (e.g. a pupil taking three A-level courses is counted three times.)			
AS-level courses are counted at the rate 2 AS-levels = 1 A-level and Scottish Higher Grade courses at the rate of 3 Highers = 2 A-levels.			
	BOYS	GIRLS	TOTAL
Arts	17215	5947	23162
Classics	3084	659	3743
English	10248	4502	14750
Mathematics	17607	3002	20609
Modern Languages	8964	4006	12970
Science/Technology	31976	6467	38443
Social Science	22212	4729	26941
TOTAL	111306	29312	140618

HMC SOURCES OF ENTRY DESTINATIONS OF LEAVERS

TABLE 14H

		PREVIOUSLY AT SCHOOL		PREVIOUS SCHOOL OR NOT KNOWN		TOTAL
		IN U.K.	OVERSEAS	EX-MAINTAINED SCHOOL	EX-PATRIATE FOREIGN	
BOYS	From Pre-Prep/Nursery/No School	187	201	17	1	339 745
	From Prep/Primary School	10661	6340	213	308	25 17547
	From Senior School (Pre-GCSE)	1111	1085	128	327	12 2663
	From Senior School (Post-GCSE)	488	602	84	460	13 1647
GIRLS	From Pre-Prep/Nursery/No School	79	47	2	0	214 342
	From Prep/Primary School	1326	1413	77	56	18 2890
	From Senior School (Pre-GCSE)	315	341	77	84	3 820
	From Senior School (Post-GCSE)	1663	787	56	187	6 2699
TOTAL		15830	10816	654	1423	630 29353

TABLE 14J

DESTINATION OF POST A-LEVEL LEAVERS
POST SCSYS OR HIGHER GRADE IN SCOTLAND

Pupils who left to take Higher Education Courses in U.K. or Overseas	Entrants to Universities, Incl. Deferred Entry	Arts	3333	1039	4372
		Science	3215	625	3840
		Engineering/Technology	1591	77	1668
		Social Science	2133	457	2590
	Degree Courses at Polytechnics	Arts	608	226	834
		Science	419	85	504
		Engineering/Technology	431	23	454
		Social Science	996	222	1218
	All other H.E. Courses	Arts	447	161	608
		Science	188	39	227
		Engineering/Technology	158	5	163
		Social Science	313	127	440
	Pupils who left to continue Secondary Education elsewhere		To another Indep. School	736	159
		To a Maintained School	579	149	728
Other Pupils who left	For further Education or training		650	303	953
	For employment		1172	177	1349
	Others		1054	287	1341
TOTAL			18023	4161	22184

TABLE 14I

DESTINATION OF LEAVERS WHO HAVE NOT SAT A-LEVEL, SCSYS or SCOTTISH HIGHER EXAMS

		To Independent Schools	To L.E.A. Schools	To Schools Overseas	Unknown	TOTAL
BOYS	Leaving at end of Pre-Prep	28	19	9	27	83
	Leaving at end of Prep	324	175	79	25	603
	Leaving immediately following GCSE	371	1798	153	709	3031
	Others leaving Pre-A-Level	406	410	230	309	1355
GIRLS	Leaving at end of Pre-Prep	5	5	13	3	26
	Leaving at end of Prep	49	37	12	5	103
	Leaving immediately following GCSE	117	284	28	103	532
	Others leaving Pre-A-Level	86	104	79	68	337
TOTAL		1386	2832	603	1249	6070

SHMIS NUMBER OF PUPILS

TABLE 15A

NUMBER OF PUPILS IN JANUARY 1990 AND CHANGES SINCE 1989

Figures for 1990 are printed in **BOLD**, those for 1989 and % changes are printed below.

AGE ON 31 AUG 89	BOYS			GIRLS			TOTAL
	BOARDS FULL	WEEKLY	DAY	BOARDS FULL	WEEKLY	DAY	
2	0	0	8	0	0	1	9
3	0	0	+300.0%	0	0	1	3
4	0	0	+11.8%	0	0	29	67
5	0	0	+38.5%	0	0	+3.6%	+8.1%
6	0	0	+83	0	0	57	147
7	0	0	+83	0	0	55	120
8	0	1	100	0	0	+3.6%	+22.5%
9	3	0	+5.3%	0	0	58	141
10	5	0	134	5	0	51	134
11	11	0	106	4	0	+13.7%	+5.2%
12	23	3	156	6	1	53	174
13	24	2	166	4	0	+35.8%	+24.1%
14	451	34	794	111	14	87	276
15	441	46	721	126	11	60	256
16	788	55	878	187	14	+45.0%	+7.8%
17	915	62	935	199	20	74	368
18	1,067	69	956	234	14	71	358
19	1,211	67	918	244	21	+4.2%	+2.8%
20	933	36	535	225	13	84	501
21	879	44	555	237	12	80	451
22	646	28	438	193	11	+5.0%	+11.1%
23	674	35	408	190	9	237	1,306
24	148	4	36	31	20	240	1,379
25	142	4	37	23	0	17	273
26	44.2%	0	-2.7%	34.8%	0	239	1,677
27	29	1	2	4	0	11	584
28	-31.0%	-100.0%	+50.0%	-25.0%	94	270	2,192
29	5,606	359	6,409	1,326	2,259	2,192	2,386
30	5,846	380	6,238	1,368	2,126	2,386	2,386
31	-4.1%	-5.5%	+2.7%	-3.1%	+6.3%	2,386	2,386
32						2,386	2,386
33						2,386	2,386
34						2,386	2,386
35						2,386	2,386
36						2,386	2,386
37						2,386	2,386
38						2,386	2,386
39						2,386	2,386
40						2,386	2,386
41						2,386	2,386
42						2,386	2,386
43						2,386	2,386
44						2,386	2,386
45						2,386	2,386
46						2,386	2,386
47						2,386	2,386
48						2,386	2,386
49						2,386	2,386
50						2,386	2,386
51						2,386	2,386
52						2,386	2,386
53						2,386	2,386
54						2,386	2,386
55						2,386	2,386
56						2,386	2,386
57						2,386	2,386
58						2,386	2,386
59						2,386	2,386
60						2,386	2,386
61						2,386	2,386
62						2,386	2,386
63						2,386	2,386
64						2,386	2,386
65						2,386	2,386
66						2,386	2,386
67						2,386	2,386
68						2,386	2,386
69						2,386	2,386
70						2,386	2,386
71						2,386	2,386
72						2,386	2,386
73						2,386	2,386
74						2,386	2,386
75						2,386	2,386
76						2,386	2,386
77						2,386	2,386
78						2,386	2,386
79						2,386	2,386
80						2,386	2,386
81						2,386	2,386
82						2,386	2,386
83						2,386	2,386
84						2,386	2,386
85						2,386	2,386
86						2,386	2,386
87						2,386	2,386
88						2,386	2,386
89						2,386	2,386
90						2,386	2,386
91						2,386	2,386
92						2,386	2,386
93						2,386	2,386
94						2,386	2,386
95						2,386	2,386
96						2,386	2,386
97						2,386	2,386
98						2,386	2,386
99						2,386	2,386
100						2,386	2,386

SHMIS NUMBERS AND FEES AREAS

TABLE 15B

ANALYSIS OF PUPIL NUMBERS AND AVERAGE TERMLY FEES
(PERCENT CHANGES ARE BASED ON 1989 FIGURES)

AREA	No. of Schools	BOYS			GIRLS			TOTAL			Boarding Fee	Weekly Boarding Fee	Day Fee Boarding Schools	Day Fee Day Schools
		Boarding Full	Weekly	Day	Boarding Full	Weekly	Day	Boarding Full	Weekly	Day				
Scotland	2	344		71	57		22	401		93	£2166		£1214	
		-3.6%		+7.6%	+23.9%		+144.4%	-0.5%		+24.0%	+12.5%		+11.8%	
The North	9	527	27	2226	445	20	842	972	47	3068	£2032	£1777	£1218	£780
		-14.0%	-15.6%	+6.2%	-6.3%	+11.1%	+9.6%	-10.7%	-6.0%	+7.1%	+11.0%	+11.5%	+10.8%	+7.6%
Wales	4	357	64	491	41	1	275	398	65	766	£2203	£1900	£1395	£1069
		-7.8%	+12.3%	-1.2%	+7.9%	-75.0%	-4.5%	-6.4%	+6.6%	-2.4%	+6.7%	+12.0%	+7.2%	+12.5%
W Midlands	5	461	53	678	161	39	283	622	92	961	£1988	£1942	£1187	
		-2.5%	-22.1%	-3.6%	+0.6%	-18.7%	+7.6%	-1.7%	-20.7%	-0.5%	+14.1%	+15.6%	+12.8%	
E Midlands	4	744	41	158	72		19	816	41	177	£2573	£2470	£1575	
		-3.1%	-10.9%	+8.2%			+5.6%	-2.9%	-10.9%	+7.9%	+8.7%	+7.4%	+11.3%	
East Anglia	2	728		53	65		64	793		117	£1841		£1324	
		-3.3%		+3.9%	-14.5%		+4.9%	-4.3%		+4.5%	+10.7%		+10.0%	
South & West	6	1061	6	409	282		106	1343	6	515	£2213	£2163	£1251	
		-3.2%		+7.1%	-0.4%		+1.9%	-2.6%		+6.0%	+10.8%	+10.4%	+9.9%	
Greater London	3	85	38	701	103	13	202	188	51	903	£2655	£2125	£1497	£890
		-9.6%	-9.5%	+2.6%	+1.0%	-35.0%	+21.0%	-4.1%	-17.7%	+6.2%	+8.0%	+13.3%	+8.2%	+14.1%
South East	9	1278	122	1344	92	19	126	1370	141	1470	£2176	£2046	£1311	£1060
		-1.4%	-6.2%	+1.9%	-17.9%	+35.7%	-7.4%	-2.7%	-2.1%	+1.0%	+10.1%	+9.5%	+11.0%	+9.8%
Ireland	1	21	8	278	8	2	320	29	10	598	£1353	£1353	£687	
		+133.3%	+60.0%	-5.4%	+100.0%		+2.6%	+123.1%	+42.9%	-1.3%	+7.4%	+7.4%	+12.6%	
All	45	5606	359	6409	1326	94	2259	6932	453	8668	£2158	£1960	£1290	£949
		-4.1%	-5.5%	+2.7%	-3.1%	-11.3%	+6.3%	-3.9%	-6.8%	+3.6%	+10.4%	+11.2%	+10.5%	+11.0%

SHMIS

TABLE 15C FULL TIME STAFF

	GRADUATES			NON-GRADUATES		TOTAL
	Math	Sci.	Other	Qual.	Non-Qual.	
MEN	110	259	623	154	12	1158
WOMEN	33	35	217	101	14	400

TABLE 15D

PART TIME STAFF

	GRADUATES		NON-GRADUATES		TOTAL
	MEN	WOMEN	MEN	WOMEN	
Number	41	121	30	80	272
Aggregate number of hours per week.	446	1445	270	896	3057

TABLE 15F

NUMBER OF SIXTH FORM PUPILS

Number of Pupils who have completed their GCSE or (in Scotland) their Standard Grades. Pupils who are re-taking some of these exams are included. Each first and second year sixth form pupil is included once.			
	BOYS	GIRLS	TOTAL
Number on A-level or (in Scotland) Higher Grade or CSYS Courses	2446	852	3298
Number on O-level/CSE/GCSE/Standard Grade re-take Courses	177	25	202
Number on other Courses	9	0	9
TOTAL	2632	877	3509

TABLE 15E FULL TIME STAFF CHANGES

STAFFING

NUMBER	Coming from	Going to
Independent Schools	58	61
Maintained Schools	58	19
University, Polytechnic or Training Coll.	24	5
Industry, etc.	7	6
Other (Incl. Retirement)	22	60
TOTAL	169	151

TABLE 15G SIXTH FORM PUPILS ANALYSED BY COURSE OF STUDY

COURSES OF STUDY

Each Sixth Form pupil is included once for each A-level or SCSYS course being studied. (e.g. a pupil taking three A-level courses is counted three times.)			
AS-level courses are counted at the rate 2 AS-levels = 1 A-level and Scottish Higher Grade courses at the rate of 3 Highers = 2 A-levels.			
	BOYS	GIRLS	TOTAL
Arts	1141	567	1708
Classics	64	23	87
English	523	358	881
Mathematics	1021	208	1229
Modern Languages	363	341	704
Science/Technology	2258	588	2846
Social Science	1185	322	1507
TOTAL	6555	2407	8962

SOURCES OF ENTRY DESTINATIONS OF LEAVERS

TABLE 15H SOURCES OF ENTRY

		PREVIOUSLY AT SCHOOL		PREVIOUS SCHOOL NOT KNOWN		TOTAL
		IN U.K.	OVERSEAS			
BOYS	From Pre-Prep/Nursery/No School	8	19	1	1	92
	From Prep/Primary School	879	815	47	60	0
	From Senior School (Pre-GCSE)	194	199	21	112	0
	From Senior School (Post-GCSE)	42	37	10	71	2
	From Pre-Prep/Nursery/No School	2	16	0	5	52
GIRLS	From Prep/Primary School	178	326	10	18	0
	From Senior School (Pre-GCSE)	67	108	18	63	0
	From Senior School (Post-GCSE)	77	86	12	28	30
	From Senior School (Post-GCSE)	77	86	12	28	30
	TOTAL	1447	1606	119	358	176

TABLE 15J

DESTINATION OF POST A-LEVEL LEAVERS
POST SCSYS OR HIGHER GRADE IN SCOTLAND

			BOYS	GIRLS	TOTAL
Pupils who left to take Higher Education Courses in U.K. or Overseas	Entrants to Universities, Incl. Deferred Entry	Arts	110	86	196
		Science	146	52	198
		Engineering/Technology	57	8	65
		Social Science	54	19	73
	Degree Courses at Polytechnics	Arts	49	19	68
		Science	45	12	57
		Engineering/Technology	40	5	45
		Social Science	52	20	72
	All other H.E. Courses	Arts	85	48	133
		Science	39	9	48
		Engineering/Technology	26	1	27
		Social Science	40	13	53
Pupils who left to continue Secondary Education elsewhere		To another Indep. School	75	9	84
		To a Maintained School	48	11	59
Other Pupils who left	For further Education or training		100	26	126
	For employment		191	36	227
	Others		69	18	87
TOTAL			1226	392	1618

TABLE 15I

DESTINATION OF LEAVERS WHO HAVE NOT SAT A-LEVEL,
SCSYS or SCOTTISH HIGHER EXAMS

		To Independent Schools	To L.E.A. Schools	To Schools Overseas	Unknown	TOTAL
BOYS	Leaving at end of Pre-Prep	13	17	5	7	42
	Leaving at end of Prep	42	64	24	5	135
	Leaving immediately following GCSE	81	408	55	317	861
	Others leaving Pre-A-Level	56	94	32	154	336
GIRLS	Leaving at end of Pre-Prep	18	4	1	4	27
	Leaving at end of Prep	8	15	6	0	29
	Leaving immediately following GCSE	35	94	12	74	215
	Others leaving Pre-A-Level	12	47	10	59	128
TOTAL		265	743	145	620	1773

GBA NUMBER OF PUPILS

TABLE 16A

NUMBER OF PUPILS IN JANUARY 1990 AND CHANGES SINCE 1989

Figures for 1990 are printed in **BOLD**, those for 1989 and % changes are printed below.

AGE ON 31 AUG 89	BOYS		GIRLS		TOTAL
	BOARDS FULL	DAY WEEKLY	BOARDS FULL	DAY WEEKLY	
2	0	0	0	0	14
3	0	0	0	0	9
4	0	0	0	0	+55.6%
5	0	0	0	0	20
6	0	0	0	0	11
7	0	0	0	0	+81.8%
8	0	0	0	0	22
9	0	0	0	0	27
10	0	0	0	0	54
11	0	0	0	0	74
12	0	0	0	0	+3.7%
13	0	0	0	0	83
14	0	0	0	0	-11.1%
15	0	0	0	0	102
16	0	0	0	0	94
17	0	0	0	0	+8.5%
18	0	0	0	0	127
19	0	0	0	0	101
TOTAL	0	0	0	0	149
	0	0	0	0	165
	0	0	0	0	-9.7%
	0	0	0	0	208
	0	0	0	0	160
	0	0	0	0	+30.0%
	0	0	0	0	215
	0	0	0	0	207
	0	0	0	0	+11.3%
	0	0	0	0	477
	0	0	0	0	147
	0	0	0	0	497
	0	0	0	0	-4.0%
	0	0	0	0	594
	0	0	0	0	574
	0	0	0	0	131
	0	0	0	0	+20.6%
	0	0	0	0	+3.5%
	0	0	0	0	823
	0	0	0	0	827
	0	0	0	0	-8.4%
	0	0	0	0	173
	0	0	0	0	877
	0	0	0	0	151
	0	0	0	0	+14.6%
	0	0	0	0	-0.7%
	0	0	0	0	890
	0	0	0	0	890
	0	0	0	0	-6.0%
	0	0	0	0	718
	0	0	0	0	760
	0	0	0	0	2
	0	0	0	0	+0.5%
	0	0	0	0	109
	0	0	0	0	578
	0	0	0	0	131
	0	0	0	0	-16.8%
	0	0	0	0	-2.2%
	0	0	0	0	8
	0	0	0	0	75
	0	0	0	0	2
	0	0	0	0	+300.0%
	0	0	0	0	-6.2%
	0	0	0	0	9
	0	0	0	0	7
	0	0	0	0	+28.6%
	0	0	0	0	1,357
	0	0	0	0	6,011
	0	0	0	0	1,338
	0	0	0	0	6,007
	0	0	0	0	+0.1%

GBA NUMBERS AND FEES AREAS

TABLE 16B

ANALYSIS OF PUPIL NUMBERS AND AVERAGE TERMLY FEES
(PERCENT CHANGES ARE BASED ON 1989 FIGURES)

AREA	No. of Schools	BOYS			GIRLS			TOTAL		Boarding Fee	Weekly Boarding Fee	Day Fee Schools	Day Fee Schools
		Full	Weekly	Day	Full	Weekly	Day	Full	Weekly				
Scotland	2	77	8	235	34	6	257	111	14	492	£2107	£2028	£928
		-12.5%	+166.7%	+3.5%	+25.9%	+20.0%	+5.3%	-3.5%	+75.0%	+4.5%	+19.4%	+7.9%	+7.9%
The North	1	18	3	82	9		74	27	3	156	£2019	£1778	£936
		+38.5%	+50.0%	+3.8%	-10.0%		+12.1%	+17.4%	-25.0%	+7.6%	+10.0%	+10.0%	+10.0%
E Midlands	2	270	2	223	231	2	138	501	4	361	£2267		£1249
		+5.5%	-88.9%	+3.2%	-1.7%		+5.3%	+2.0%	-80.0%	+4.0%	+9.9%		+9.9%
East Anglia	3	258	11	755	6		181	264	11	936	£1966	£2120	£1047
		+13.7%	-15.4%	-5.6%	+200.0%		-4.7%	+15.3%	-15.4%	-5.5%	+10.6%	+9.4%	+8.5%
South & West	2	591		251	353		116	944		367			£1284
		-3.3%		-4.2%	+0.9%		+7.4%	-1.8%		-0.8%			+15.2%
Greater London	2			238			577			815			£1290
				+1.7%			-1.5%			-0.6%			+12.6%
South East	2	213		778			14	213		792	£1780		£1055
		+0.9%		+0.5%			+7.7%	+0.9%		+0.6%	+10.1%		+16.1%
All	14	1427	24	2562	633	8	1357	2060	32	3919	£2029	£1975	£1070
		+1.5%	-36.8%	-1.2%	+1.4%	-11.1%	+1.4%	+1.5%	-31.9%	-0.3%	+12.2%	+9.1%	+10.8%
													+13.8%

GBA

TABLE 16C FULL TIME STAFF

	GRADUATES			NON-GRADUATES		TOTAL
	Math	Sci.	Other	Qual.	Non-Qual.	
MEN	38	107	210	48	1	404
WOMEN	16	23	107	44	2	192

TABLE 16D PART TIME STAFF

	GRADUATES		NON-GRADUATES		TOTAL
	MEN	WOMEN	MEN	WOMEN	
Number	15	57	13	33	118
Aggregate number of hours per week.	164	531	120	356	1171

TABLE 16F

NUMBER OF SIXTH FORM PUPILS

Number of Pupils who have completed their GCSE or (in Scotland) their Standard Grades. Pupils who are re-taking some of these exams are included. Each first and second year sixth form pupil is included once.			
	BOYS	GIRLS	TOTAL
Number on A-level or (in Scotland) Higher Grade or CSYS Courses	803	503	1306
Number on O-level/CSE/GCSE/Standard Grade re-take Courses	39	11	50
Number on other Courses	18	19	37
TOTAL	860	533	1393

TABLE 16E FULL TIME STAFF CHANGES

NUMBER	Coming from	Going to
Independent Schools	20	13
Maintained Schools	22	9
University, Polytechnic or Training Coll.	13	3
Industry, etc.	2	4
Other (Incl. Retirement)	6	19
TOTAL	63	48

STAFFING

TABLE 16G SIXTH FORM PUPILS ANALYSED BY COURSE OF STUDY

Each Sixth Form pupil is included once for each A-level or SCSYS course being studied. (e.g. a pupil taking three A-level courses is counted three times.)			
AS-level courses are counted at the rate 2 AS-levels = 1 A-level and Scottish Higher Grade courses at the rate of 3 Highers = 2 A-levels.			
	BOYS	GIRLS	TOTAL
Arts	253	349	602
Classics	10	9	19
English	154	199	353
Mathematics	422	174	596
Modern Languages	115	167	282
Science/Technology	690	352	1042
Social Science	491	260	751
TOTAL	2135	1510	3645

COURSES OF STUDY

SOURCES OF ENTRY

DESTINATIONS OF LEAVERS

TABLE 16H SOURCES OF ENTRY

		PREVIOUSLY AT SCHOOL		PREVIOUS SCHOOL OR NO PREVIOUS SCHOOL	FOREIGN	TOTAL
		IN U.K.	OVERSEAS			
BOYS	From Pre-Prep/Nursery/No School	7	9	0	0	42
	From Prep/Primary School	365	249	11	13	3
	From Senior School (Pre-GCSE)	74	94	9	87	1
	From Senior School (Post-GCSE)	37	32	1	43	0
GIRLS	From Pre-Prep/Nursery/No School	0	0	0	0	27
	From Prep/Primary School	97	87	9	8	1
	From Senior School (Pre-GCSE)	66	32	3	14	0
	From Senior School (Post-GCSE)	41	34	1	20	0
TOTAL		687	537	34	185	74

TABLE 16J

DESTINATION OF POST A-LEVEL LEAVERS
POST SCSYS OR HIGHER GRADE IN SCOTLAND

Pupils who left to take Higher Education Courses in U.K. or Overseas			BOYS	GIRLS	TOTAL
	Entrants to Universities, Incl. Deferred Entry	Arts	25	47	72
		Science	68	20	88
		Engineering/Technology	42	2	44
		Social Science	56	33	89
	Degree Courses at Polytechnics	Arts	13	16	29
		Science	2	6	8
		Engineering/Technology	14	0	14
		Social Science	31	8	39
	All other H.E. Courses	Arts	10	14	24
Science		5	5	10	
Engineering/Technology		3	2	5	
Social Science		13	13	26	
Pupils who left to continue Secondary Education elsewhere	To another Indep. School	15	9	24	
	To a Maintained School	12	9	21	
Other Pupils who left	For further Education or training	31	32	63	
	For employment	43	13	56	
	Others	56	26	82	
		TOTAL	439	255	694

TABLE 16I

DESTINATION OF LEAVERS WHO HAVE NOT SAT A-LEVEL,
SCSYS or SCOTTISH HIGHER EXAMS

		To Independent Schools	To L.E.A. Schools	To Schools Overseas	Unknown	TOTAL
BOYS	Leaving at end of Pre-Prep	0	4	3	4	11
	Leaving at end of Prep	15	4	6	11	36
	Leaving immediately following GCSE	35	136	22	99	292
	Others leaving Pre-A-Level	44	27	37	42	150
GIRLS	Leaving at end of Pre-Prep	0	8	2	0	10
	Leaving at end of Prep	6	12	7	2	27
	Leaving immediately following GCSE	15	31	5	26	77
	Others leaving Pre-A-Level	20	12	14	24	70
TOTAL		135	234	96	208	673

GSA
NUMBER OF PUPILS

TABLE 17A

NUMBER OF PUPILS IN JANUARY 1990 AND CHANGES SINCE 1989

Figures for 1990 are printed in **BOLD**, those for 1989 and % changes are printed below.

AGE ON 31 AUG 89	BOYS			GIRLS			TOTAL
	BOARDS FULL	BOARDS WEEKLY	DAY	BOARDS FULL	BOARDS WEEKLY	DAY	
2	0	0	69	0	0	176	245
	0	0	51	0	0	157	208
			+35.3%			+12.1%	+17.8%
3	0	0	251	0	0	708	959
	0	0	201	0	0	615	816
			+24.9%			+15.1%	+17.5%
4	0	0	349	0	0	1,678	2,027
	1	0	315	0	0	1,437	1,753
			+10.8%			+16.8%	+15.6%
5	1	0	307	0	0	2,100	2,408
	1	1	294	3	0	2,072	2,371
			+4.4%	-100.0%		+1.4%	+1.6%
6	1	0	264	6	1	2,259	2,531
	0	0	265	5	1	2,178	2,449
			-0.4%	+20.0%		+3.7%	+3.3%
7	0	0	165	22	9	3,210	3,406
	2	0	143	29	6	3,151	3,331
			+15.4%	-24.1%	+50.0%	+1.9%	+2.3%
8	2	1	39	74	12	3,807	3,935
	1	1	41	86	26	3,794	3,949
			-4.9%	-14.0%	-53.8%	+0.3%	-0.4%
9	2	1	35	173	48	4,410	4,669
	1	0	26	182	56	4,240	4,505
			+34.6%	-4.9%	-14.3%	+4.0%	+3.6%
10	0	0	19	430	110	4,884	5,443
	2	0	22	479	106	4,627	5,236
			-13.6%	-10.2%	+3.8%	+5.6%	+4.0%
11	0	0	5	1,683	339	9,955	11,982
	0	1	7	1,756	307	9,694	11,765
			-28.6%	-4.2%	+10.4%	+2.7%	+1.8%
12	0	1	8	2,271	379	10,083	12,742
	0	0	0	2,390	365	10,140	12,895
			-5.0%	+3.8%	-0.6%	-1.2%	-1.2%
13	0	0	0	2,775	418	10,128	13,321
	0	0	0	3,025	438	10,177	13,640
			-8.3%	-4.6%	-0.5%	-2.3%	-2.3%
14	0	0	0	3,151	470	10,016	13,637
	0	0	0	3,247	470	10,132	13,849
			-3.0%	-1.1%	-1.5%	-1.5%	-1.5%
15	0	0	0	3,214	481	10,079	13,774
	0	0	0	3,358	489	9,868	13,715
			-4.3%	-1.6%	+2.1%	+0.4%	+0.4%
16	0	0	9	2,885	365	7,009	10,268
	0	0	6	2,928	394	7,083	10,411
			+50.0%	-1.5%	-7.4%	-1.0%	-1.4%
17	0	0	8	2,340	303	5,874	8,525
	0	0	12	2,474	264	5,781	8,531
			-33.3%	-5.4%	+14.8%	+1.6%	-0.1%
18	0	0	372	20	224	617	617
	0	0	3	341	17	323	684
			-66.7%	+9.1%	+17.6%	-30.7%	-9.8%
19	0	0	0	46	0	12	58
	0	0	1	51	0	46	98
			-100.0%	-9.8%	0	-73.9%	-40.8%
TOTAL	6	3	1,529	19,442	2,955	86,612	110,547
	8	3	1,387	20,354	2,939	85,515	110,206
			+10.2%	-4.5%	+0.5%	+1.3%	+0.3%
	-25.0%						

GSA NUMBERS AND FEES BY AREAS

TABLE 17B

ANALYSIS OF PUPIL NUMBERS AND AVERAGE TERMLY FEES
(PERCENT CHANGES ARE BASED ON 1989 FIGURES)

AREA	No. of Schools	BOYS			GIRLS			TOTAL		Boarding Fee	Weekly Boarding Fee	Day Fee Boarding Schools	Day Fee Day Schools	
		Boarding			Boarding			Boarding						
		Full	Weekly	Day	Full	Weekly	Day	Full	Weekly					Day
Scotland	11			45	839	66	3923	839	66	3968	£2027	£1987	£1019	£865
				+4.7%	-5.3%	+1.5%	+0.1%	-5.3%	+1.5%	+0.1%	+11.4%	+11.9%	+13.2%	+8.3%
The North	36			593	1734	92	16932	1734	92	17525	£2109	£1928	£1237	£850
				+4.8%	-1.5%	-37.4%	+0.6%	-1.5%	-37.4%	+0.7%	+10.9%	+11.7%	+10.0%	+10.2%
Wales	4			40	495	105	1454	495	105	1494	£1975	£1877	£1209	
				+37.9%	+10.7%	-8.7%	+5.4%	+10.7%	-8.7%	+6.0%	+8.8%	+10.0%	+11.3%	
W Midlands	24			111	2479	276	6578	2479	276	6689	£2158	£1881	£1304	£901
				+22.0%	-7.6%	+1.8%	+6.0%	-7.6%	+1.8%	+6.2%	+12.4%	+10.8%	+13.3%	+10.3%
E Midlands	30			106	2814	796	11224	2814	796	11330	£2031	£1821	£1116	£927
				+2.9%	-7.2%	+9.5%	+2.0%	-7.2%	+9.5%	+2.0%	+10.2%	+9.3%	+10.6%	+16.3%
East Anglia	14			103	1200	145	4567	1200	145	4670	£2076	£1605	£1189	£839
				-9.6%	-1.2%	-0.7%	+0.3%	-1.2%	-0.7%	+0.1%	+12.2%	+9.2%	+9.2%	+12.2%
South & West	30	6	3	229	3430	520	7910	3436	523	8139	£2041	£1779	£1157	£831
		-25.0%		+25.8%	-4.8%	+3.8%	+1.3%	-4.8%	+3.8%	+1.9%	+11.3%	+11.0%	+12.4%	+18.0%
Greater London	31			96	112	26	17764	112	26	17860	£1989	£1899	£1107	£1028
				+31.5%	-33.3%	+4.0%	+1.2%	-33.3%	+4.0%	+1.4%	+12.9%	+6.9%	+9.7%	+13.1%
South East	62			206	6339	929	16260	6339	929	16466	£2217	£2062	£1283	£961
				+10.8%	-3.4%	-1.4%	-0.0%	-3.4%	-1.4%	+0.1%	+12.8%	+12.3%	+12.5%	+13.7%
All	242	6	3	1529	19442	2955	86612	19448	2958	88141	£2114	£1911	£1207	£925
		-25.0%		+10.2%	-4.5%	+0.5%	+1.3%	-4.5%	+0.5%	+1.4%	+11.7%	+11.0%	+11.8%	+12.5%

TABLE 17C FULL TIME STAFF

	GRADUATES			NON-GRADUATES		TOTAL
	Math	Sci.	Other	Qual.	Non-Qual.	
MEN	128	322	596	85	3	1134
WOMEN	662	970	4241	1579	59	7511

TABLE 17D

PART TIME STAFF

	GRADUATES		NON-GRADUATES		TOTAL
	MEN	WOMEN	MEN	WOMEN	
Number	244	2250	62	986	3542
Aggregate number of hours per week.	3277	26430	1018	11150	41875

TABLE 17F

NUMBER OF SIXTH FORM PUPILS

Number of Pupils who have completed their GCSE or (in Scotland) their Standard Grades. Pupils who are re-taking some of these exams are included. Each first and second year sixth form pupil is included once.			
	BOYS	GIRLS	TOTAL
Number on A-level or (in Scotland) Higher Grade or CSYS Courses	39	18594	18633
Number on O-level/CSE/GCSE/Standard Grade re-take Courses	0	1290	1290
Number on other Courses	0	236	236
TOTAL	39	20120	20159

TABLE 17E FULL TIME STAFF CHANGES

NUMBER	Coming from	Going to
Independent Schools	397	232
Maintained Schools	509	158
University, Polytechnic or Training Coll.	163	34
Industry, etc.	21	48
Other (Incl. Retirement)	187	631
TOTAL	1277	1103

STAFFING

TABLE 17G SIXTH FORM PUPILS ANALYSED BY COURSE OF STUDY

Each Sixth Form pupil is included once for each A-level or SCSSYS course being studied. (e.g. a pupil taking three A-level courses is counted three times.)			
AS-level courses are counted at the rate 2 AS-levels = 1 A-level and Scottish Higher Grade courses at the rate of 3 Highers = 2 A-levels.			
	BOYS	GIRLS	TOTAL
Arts	7	11844	11851
Classics	0	2204	2204
English	3	6982	6985
Mathematics	5	6636	6641
Modern Languages	1	7131	7132
Science/Technology	15	12842	12857
Social Science	17	8520	8537
TOTAL	48	56159	56207

COURSES OF STUDY

GSA SOURCES OF ENTRY DESTINATIONS OF LEAVERS

TABLE 17H SOURCES OF ENTRY

		PREVIOUSLY AT SCHOOL		PREVIOUS SCHOOL NOT KNOWN	NO PREVIOUS SCHOOL	TOTAL	
		IN U.K.	OVERSEAS				
		EX-INDER SCHOOL	EX-MAINTAINED SCHOOL				EXPATRIATE
BOYS	From Pre-Prep/Nursery/No School	51	19	1	0	383	454
	From Prep/Primary School	40	39	2	2	0	83
	From Senior School (Pre-GCSE)	3	16	0	0	10	29
	From Senior School (Post-GCSE)	11	0	0	0	16	27
GIRLS	From Pre-Prep/Nursery/No School	846	343	16	10	1621	2836
	From Prep/Primary School	5643	4894	253	312	95	11197
	From Senior School (Pre-GCSE)	1481	1399	128	536	6	3550
	From Senior School (Post-GCSE)	584	355	42	355	7	1343
TOTAL		8659	7065	442	1215	2138	19519

TABLE 17J

DESTINATION OF POST A-LEVEL LEAVERS
POST SCSYS OR HIGHER GRADE IN SCOTLAND

			BOYS	GIRLS	TOTAL
Pupils who left to take Higher Education Courses in U.K. or Overseas	Entrants to Universities, Incl. Deferred Entry	Arts	4	2368	2372
		Science	2	1474	1476
		Engineering/Technology	0	239	239
		Social Science	0	745	745
	Degree Courses at Polytechnics	Arts	0	527	527
		Science	1	202	203
		Engineering/Technology	0	52	52
		Social Science	0	410	410
	All other H.E. Courses	Arts	0	646	646
		Science	0	118	118
		Engineering/Technology	1	24	25
		Social Science	0	224	224
Pupils who left to continue Secondary Education elsewhere		To another Indep. School	0	450	450
		To a Maintained School	0	316	316
Other Pupils who left	For further Education or training		0	723	723
	For employment		1	428	429
	Others		1	374	375
TOTAL			10	9320	9330

TABLE 17I

DESTINATION OF LEAVERS WHO HAVE NOT SAT A-LEVEL,
SCSYS or SCOTTISH HIGHER EXAMS

		To Independent Schools	To L.E.A. Schools	To Schools Overseas	Unknown	TOTAL
BOYS	Leaving at end of Pre-Prep	178	74	12	39	303
	Leaving at end of Prep	88	11	3	7	109
	Leaving immediately following GCSE	0	0	0	0	0
	Others leaving Pre-A-Level	10	11	1	2	24
GIRLS	Leaving at end of Pre-Prep	147	119	23	42	331
	Leaving at end of Prep	651	227	93	81	1052
	Leaving immediately following GCSE	1745	2038	185	531	4499
	Others leaving Pre-A-Level	760	573	300	300	1933
TOTAL		3579	3053	617	1002	8251

GBGSA NUMBER OF PUPILS

TABLE 18A

NUMBER OF PUPILS IN JANUARY 1990 AND CHANGES SINCE 1989

Figures for 1990 are printed in **BOLD**, those for 1989 and % changes are printed below.

AGE ON 31 AUG 89	BOYS		GIRLS		TOTAL
	BOARDERS FULL	DAY WEEKLY	BOARDERS FULL	DAY WEEKLY	
2	0	0	0	0	78
	0	0	0	0	60
		+65.2%		+8.1%	+30.0%
3	0	0	0	0	110
	0	0	0	0	176
		-10.8%		+19.6%	+6.0%
4	0	0	0	0	184
	0	0	0	0	280
		+28.0%		-3.7%	+5.3%
5	0	0	0	0	214
	0	0	0	0	286
		+24.1%		+25.9%	+24.3%
6	0	0	0	0	204
	0	0	0	0	264
		-14.7%		-1.4%	-4.3%
7	0	0	2	2	239
	0	0	3	1	271
		+15.6%		-11.8%	-7.8%
8	0	0	4	0	294
	0	0	3	1	283
		+14.3%		+3.9%	+4.8%
9	0	0	6	4	322
	0	0	5	3	313
		+15.0%		+2.9%	+4.1%
10	1	0	16	7	355
	0	0	13	4	338
		+10.0%		+75.0%	+6.9%
11	2	1	37	25	703
	0	0	37	24	701
		-8.1%		+4.2%	+0.4%
12	5	0	48	26	750
	0	0	64	20	771
		+14.3%		+30.0%	-2.7%
13	10	1	72	26	786
	2	0	82	24	798
	+400.0%		-4.9%	+8.3%	-1.5%
14	1	0	48	22	820
	2	0	87	36	826
	-50.0%		-5.7%	-38.9%	-0.7%
15	4	0	50	40	800
	4	0	118	31	816
			-31.4%	+29.0%	-2.0%
16	3	0	44	18	509
	4	0	85	17	465
	-25.0%		+193.3%	+5.9%	+8.2%
17	5	0	11	13	371
	4	0	10	6	406
	+25.0%		+10.0%	+116.7%	-8.6%
18	1	0	2	1	65
	1	0	6	1	18
			-33.3%	+133.3%	+261.1%
19	0	0	1	0	0
	0	0	2	0	0
			+50.0%		+33.3%
TOTAL	32	2	769	184	6,766
	17	0	668	168	6,703
	+88.2%		+15.1%	+9.5%	+0.9%

GBGSA NUMBERS AND FEES BY AREAS

TABLE 18B

ANALYSIS OF PUPIL NUMBERS AND AVERAGE TERMLY FEES
(PERCENT CHANGES ARE BASED ON 1989 FIGURES)

AREA	No. of Schools	BOYS			GIRLS			TOTAL			Boarding	Weekly	Day Fee	Day Fee
		Boarding	Full	Weekly	Boarding	Full	Weekly	Boarding	Full	Weekly	Fee	Fee	Boarding	Day
				Day			Day				Day		Schools	Schools
Scotland	3			216	22	2	1033	22	2	1249	£2015		£937	£894
				+21.3%	-18.5%	-33.3%	-2.7%	-18.5%	-33.3%	+0.7%	+12.6%		+12.8%	+8.4%
The North	3			28			2028			2056				£819
							+0.7%			+0.7%				+15.2%
W Midlands	3			23	57	122	1024	57	122	1047	£2030	£1855	£1037	£966
					-16.2%	-3.9%	+5.7%	-16.2%	-3.9%	+8.0%	+10.0%	+10.6%	+10.7%	+20.4%
E Midlands	1			17			341			358				£695
				-26.1%			+6.2%			+4.1%				+13.0%
South & West	1			46	5	9	130	5	9	176	£1760	£1590	£1050	
				+24.3%	-50.0%	+80.0%	-11.6%	-50.0%	+80.0%	-4.3%	+8.6%	+3.2%	+15.4%	
Greater London	1						459			459				£760
							+3.8%			+3.8%				+10.9%
South East	9	32	2	439	392	51	1751	424	53	2190	£1848	£1841	£1088	£845
		+88.2%		+9.2%	-11.1%	+54.5%	+0.1%	-7.4%	+60.6%	+1.8%	+16.2%	+14.8%	+12.9%	+11.2%
All	21	32	2	769	476	184	6766	508	186	7535	£1885	£1813	£1059	£835
		+88.2%		+15.1%	-12.8%	+9.5%	+0.9%	-9.8%	+10.7%	+2.2%	+13.6%	+12.4%	+12.7%	+12.8%

GBGSA

TABLE 18C FULL TIME STAFF

	GRADUATES			NON-GRADUATES		TOTAL
	Math	Sci.	Other	Qual.	Non-Qual.	
MEN	12	18	46	5	1	82
WOMEN	39	82	284	181	7	593

TABLE 18D

PART TIME STAFF

	GRADUATES		NON-GRADUATES		TOTAL
	MEN	WOMEN	MEN	WOMEN	
Number	14	166	6	111	297
Aggregate number of hours per week.	165	2023	59	1250	3497

TABLE 18E FULL TIME STAFF CHANGES

NUMBER	Coming from	Going to
Independent Schools	22	9
Maintained Schools	37	11
University, Polytechnic or Training Coll.	10	1
Industry, etc.	4	11
Other (Incl. Retirement)	15	47
TOTAL	88	79

STAFFING

TABLE 18F

NUMBER OF SIXTH FORM PUPILS

Number of Pupils who have completed their GCSE or (in Scotland) their Standard Grades. Pupils who are re-taking some of these exams are included. Each first and second year sixth form pupil is included once.			
	BOYS	GIRLS	TOTAL
Number on A-level or (in Scotland) Higher Grade or CSYS Courses	43	1031	1074
Number on O-level/CSE/GCSE/Standard Grade re-take Courses	3	146	149
Number on other Courses	0	10	10
TOTAL	46	1187	1233

TABLE 18G SIXTH FORM PUPILS ANALYSED BY COURSE OF STUDY

Each Sixth Form pupil is included once for each A-level or SCSYS course being studied. (e.g. a pupil taking three A-level courses is counted three times).			
AS-level courses are counted at the rate 2 AS-levels = 1 A-level and Scottish Higher Grade courses at the rate of 3 Highers = 2 A-levels.			
	BOYS	GIRLS	TOTAL
Arts	19	589	608
Classics	0	61	61
English	4	361	365
Mathematics	35	303	338
Modern Languages	2	322	324
Science/Technology	34	644	678
Social Science	25	302	327
TOTAL	119	2582	2701

COURSES OF STUDY

GBGSA **SOURCES OF ENTRY** **DESTINATIONS OF LEAVERS**

TABLE 18H SOURCES OF ENTRY

		PREVIOUSLY AT SCHOOL		PREVIOUS SCHOOL OR NOT KNOWN		TOTAL
		IN U.K.	OVERSEAS	EX-INDEP. SCHOOL	EX-MAINTAINED SCHOOL	
BOYS	From Pre-Prep/Nursery/No School	24	17	1	0	126
	From Prep/Primary School	25	20	6	2	12
	From Senior School (Pre-GCSE)	2	2	1	1	0
	From Senior School (Post-GCSE)	1	2	0	0	0
GIRLS	From Pre-Prep/Nursery/No School	74	39	5	0	190
	From Prep/Primary School	364	347	19	20	19
	From Senior School (Pre-GCSE)	80	97	19	66	5
	From Senior School (Post-GCSE)	8	24	8	14	2
TOTAL		578	548	59	103	354

TABLE 18J

DESTINATION OF POST A-LEVEL LEAVERS
POST SCSYS OR HIGHER GRADE IN SCOTLAND

			BOYS	GIRLS	TOTAL
Pupils who left to take Higher Education Courses in U.K. or Overseas	Entrants to Universities, Incl. Deferred Entry	Arts	1	123	124
		Science	0	86	86
		Engineering/Technology	1	15	16
		Social Science	1	26	27
	Degree Courses at Polytechnics	Arts	0	36	36
		Science	1	11	12
		Engineering/Technology	1	2	3
		Social Science	1	28	29
	All other H.E. Courses	Arts	1	26	27
		Science	0	7	7
		Engineering/Technology	0	1	1
		Social Science	0	14	14
Pupils who left to continue Secondary Education elsewhere		To another Indep. School	3	17	20
		To a Maintained School	1	14	15
Other Pupils who left	For further Education or training		3	82	85
	For employment		2	30	32
	Others		0	18	18
TOTAL			16	536	552

TABLE 18I

DESTINATION OF LEAVERS WHO HAVE NOT SAT A-LEVEL,
SCSYS or SCOTTISH HIGHER EXAMS

		To Independent Schools	To L.E.A. Schools	To Schools Overseas	Unknown	TOTAL
BOYS	Leaving at end of Pre-Prep	37	6	7	5	55
	Leaving at end of Prep	9	2	0	0	11
	Leaving immediately following GCSE	0	5	0	2	7
	Others leaving Pre-A-Level	2	3	6	1	12
GIRLS	Leaving at end of Pre-Prep	17	8	9	13	47
	Leaving at end of Prep	63	19	16	4	102
	Leaving immediately following GCSE	152	217	18	80	467
	Others leaving Pre-A-Level	40	29	50	28	147
TOTAL		320	289	106	133	848

IAPS NUMBER OF PUPILS

TABLE 19A

NUMBER OF PUPILS IN JANUARY 1990 AND CHANGES SINCE 1989

Figures for 1990 are printed in **BOLD**, those for 1989 and % changes are printed below.

AGE	BOYS			GIRLS			TOTAL
ON	BOARDS	DAY		BOARDS	DAY		
31	FULL	WEEKLY		FULL	WEEKLY		
AUG							
89							
2	0	0	581	0	0	509	1,090
	0	0	514	0	0	472	986
			+13.0%			+7.8%	+10.5%
3	0	0	2,190	0	0	1,728	3,918
	0	0	2,103	0	0	1,701	3,804
			+4.1%			+1.6%	+3.0%
4	0	0	4,473	0	0	3,011	7,484
	1	0	4,253	0	0	2,905	7,159
			+5.2%			+3.6%	+4.5%
5	3	1	4,997	4	1	3,204	8,210
	9	5	4,665	6	0	2,928	7,613
			-66.7%			+9.4%	+7.8%
6	48	12	5,251	35	5	3,134	8,485
	71	14	5,117	35	11	3,101	8,349
			-14.3%			-54.5%	+1.1%
7	517	91	7,253	156	34	3,622	11,673
	568	101	7,270	182	42	3,473	11,636
			-9.9%			-19.0%	+0.3%
8	1,600	257	8,542	467	93	3,944	14,903
	1,747	280	8,310	499	95	3,815	14,746
			-8.4%			-2.1%	+1.1%
9	2,324	413	8,797	790	133	3,948	16,405
	2,385	437	8,607	804	171	3,822	16,226
			-2.6%			-1.7%	+1.1%
10	2,979	547	8,594	1,006	216	3,632	16,974
	2,974	557	8,032	993	182	3,369	16,107
			+0.2%			+1.3%	+5.4%
11	3,370	663	6,512	929	178	1,217	12,869
	3,498	708	6,099	891	136	1,208	12,540
			-3.7%			+0.7%	+2.6%
12	3,566	842	4,821	652	117	611	10,609
	3,795	763	4,682	628	102	506	10,476
			-6.0%			+14.7%	+1.3%
13	412	78	449	48	22	61	1,070
	467	70	467	67	17	69	1,157
			-11.8%			-11.6%	-7.5%
14	5	1	164	16	8	42	236
	4	2	167	13	13	43	242
			+25.0%			-2.3%	-2.5%
15	1	3	145	13	12	39	213
	2	2	154	13	5	35	211
			-50.0%			+140.0%	+0.9%
16	0	0	54	0	0	3	57
	1	0	41	5	0	4	51
			+31.7%			-25.0%	+11.8%
17	0	0	23	0	0	0	23
	0	0	2	0	0	0	2
			+1050.0%				+1050.0%
18	0	0	3	0	0	0	3
	0	0	0	0	0	0	0
19	0	0	0	0	0	0	0
	0	0	0	0	0	0	0
TOTAL	14,825	2,908	62,849	4,116	819	28,705	114,222
	15,522	2,939	60,483	4,136	774	27,451	111,305
			-4.5%			+5.8%	+2.6%

IAPS NUMBERS AND FEES BY AREAS

TABLE 19B

ANALYSIS OF PUPIL NUMBERS AND AVERAGE TERMLY FEES
(PERCENT CHANGES ARE BASED ON 1989 FIGURES)

AREA	No. of Schools	BOYS			GIRLS			TOTAL			Boarding Fee	Weekly Boarding Fee	Day Fee Boarding Schools	Day Fee Day Schools
		Boarding Full	Weekly	Day	Boarding Full	Weekly	Day	Boarding Full	Weekly	Day				
Scotland	19	586	82	1559	273	27	877	859	109	2436	£1876	£1820	£1148	£870
		-1.3%	+15.5%	+5.0%	-0.7%	-15.6%	+4.5%	-1.2%	+5.8%	+4.8%	+10.7%	+10.5%	+12.4%	+10.1%
The North	55	1398	202	5864	396	102	2798	1794	304	8662	£1616	£1441	£1019	£759
		-7.2%	+2.0%	+4.2%	-4.3%	+1.0%	+6.3%	-6.6%	+1.7%	+4.9%	+10.5%	+10.3%	+10.0%	+10.3%
Wales	7	145	63	831	65	29	468	210	92	1299	£1504	£1332	£986	£707
		-12.7%	+10.5%	-4.5%	-12.2%	+16.0%	+10.1%	-12.5%	+12.2%	+0.3%	+11.0%	+10.0%	+9.2%	+4.7%
W Midlands	60	1815	477	6216	456	213	3288	2271	690	9504	£1660	£1590	£1160	£819
		-3.1%	-0.8%	+8.1%	+4.1%	+6.0%	+5.0%	-1.7%	+1.2%	+7.0%	+10.4%	+11.1%	+11.2%	+12.0%
E Midlands	71	1948	403	8729	374	68	4135	2322	471	12864	£1800	£1591	£1169	£888
		-5.6%	-2.7%	+1.4%	+8.7%	+9.7%	+2.7%	-3.5%	-1.1%	+1.8%	+11.2%	+11.2%	+12.5%	+12.5%
East Anglia	36	855	235	4652	262	40	2097	1117	275	6749	£1832	£1699	£1234	£722
		-3.3%	+6.3%	+3.1%	-2.6%	+11.1%	+1.4%	-3.1%	+7.0%	+2.6%	+11.0%	+12.1%	+12.3%	+8.7%
South & West	59	2247	393	5373	977	201	2748	3224	594	8121	£1785	£1637	£1148	£783
		-9.7%	+15.9%	+4.6%	-1.1%	+26.4%	+5.0%	-7.3%	+19.3%	+4.7%	+10.0%	+10.1%	+11.9%	+12.5%
Greater London	55	153	79	10324	23		2817	176	79	13141	£1194	£1940	£1203	£1022
		-11.6%	-4.8%	+0.7%			+3.5%	+1.7%	-4.8%	+1.3%	+14.4%	+26.5%	+13.5%	+11.7%
South East	168	5566	929	18779	1249	119	9358	6815	1048	28137	£1806	£1695	£1228	£886
		-1.7%	-9.2%	+5.6%	-2.5%	-13.1%	+5.3%	-1.8%	-9.7%	+5.5%	+11.1%	+11.4%	+13.0%	+11.7%
Ireland	5	112	45	522	41	20	119	153	65	641	£1423	£1373	£787	
		-0.9%	-13.5%	+16.5%	-22.6%	-4.8%	+12.3%	-7.8%	-11.0%	+15.7%	+6.4%	+11.2%	+17.8%	
All	535	14825	2908	62849	4116	819	28705	18941	3727	91554	£1746	£1631	£1165	£879
		-4.5%	-1.1%	+3.9%	-0.5%	+5.8%	+4.6%	-3.6%	+0.4%	+4.1%	+10.7%	+11.3%	+12.1%	+11.5%

IAPS STAFFING

TABLE 19C FULL TIME STAFF

	GRADUATES			NON-GRADUATES		TOTAL
	Math	Sci.	Other	Qual.	Non-Qual.	
MEN	235	390	2320	956	236	4137
WOMEN	81	179	1699	2412	359	4730

TABLE 19D
PART TIME STAFF

	GRADUATES		NON-GRADUATES		TOTAL
	MEN	WOMEN	MEN	WOMEN	
Number	301	744	311	1483	2839
Aggregate number of hours per week.	2602	9276	2750	18348	32976

TABLE 19E FULL TIME STAFF CHANGES

NUMBER	Coming from	Going to
Independent Schools	512	353
Maintained Schools	408	131
University, Polytechnic or Training Coll.	186	67
Industry, etc.	30	57
Other (Incl. Retirement)	270	525
TOTAL	1406	1133

IAPS SOURCES OF ENTRY DESTINATIONS OF LEAVERS

TABLE 19H SOURCES OF ENTRY

		PREVIOUSLY AT SCHOOL		PREVIOUS SCHOOL NOT KNOWN	NO PREVIOUS SCHOOL	TOTAL	
		IN U.K.	OVERSEAS				
BOYS	From Pre-Prep/Nursery/No School	2967	937	105	76	4594	8679
	From Prep/Primary School	3667	5344	452	506	294	10263
	From Senior School (Pre-GCSE)	49	77	2	11	1	140
	From Senior School (Post-GCSE)	1	4	0	0	0	5
	TOTAL	9119	8431	871	850	7940	27211
GIRLS	From Pre-Prep/Nursery/No School	1052	305	46	52	2897	4352
	From Prep/Primary School	1373	1739	262	200	154	3728
	From Senior School (Pre-GCSE)	10	25	4	5	0	44
	From Senior School (Post-GCSE)	0	0	0	0	0	0
	TOTAL	9119	8431	871	850	7940	27211

TABLE 19I

DESTINATION OF LEAVERS WHO HAVE NOT SAT A-LEVEL, SCSYS or SCOTTISH HIGHER EXAMS

		To Independent Schools	To L.E.A. Schools	To Schools Overseas	Unknown	TOTAL
BOYS	Leaving at end of Pre-Prep	1469	359	153	136	2117
	Leaving at end of Prep	10996	1231	463	170	12860
	Leaving immediately following GCSE	48	83	6	16	153
	Others leaving Pre-A-Level	325	139	94	37	595
	TOTAL	12838	1772	646	269	15525
GIRLS	Leaving at end of Pre-Prep	569	207	84	78	938
	Leaving at end of Prep	4067	573	174	66	4880
	Leaving immediately following GCSE	98	34	3	4	139
	Others leaving Pre-A-Level	262	105	42	14	423
	TOTAL	17634	2731	1019	521	22105

TABLE 20A

NUMBER OF PUPILS IN JANUARY 1990 AND CHANGES SINCE 1989

Figures for 1990 are printed in **BOLD**, those for 1989 and % changes are printed below.

AGE ON 31 AUG 89	BOYS			GIRLS			TOTAL
	BOARDERS FULL	WEEKLY	DAY	BOARDERS FULL	WEEKLY	DAY	
2	0	0	473	0	0	511	984
	0	0	440	0	0	+18.6%	871
3	0	0	1,510	0	0	1,501	+13.0%
	0	0	1,431	0	0	1,316	3,011
4	0	0	+5.5%	0	0	+14.1%	2,747
	0	0	2,241	0	0	2,177	+9.6%
	0	0	2,042	0	0	2,047	4,418
5	1	0	+9.7%	1	0	+6.4%	+8.0%
	3	3	2,170	1	0	2,115	4,287
	2,025		+7.2%	3	3	2,109	4,146
6	-66.7%	-100.0%	-66.7%	-100.0%	0	+0.3%	+3.4%
	6	4	2,116	9	1	2,119	4,255
	11	2	2,002	8	10	2,090	4,123
7	-45.5%	+100.0%	+5.7%	+12.5%	-90.0%	+1.4%	+3.2%
	26	9	1,905	18	5	2,093	4,056
	20	9	1,901	17	11	2,104	4,062
8	+30.0%		+0.2%	+5.9%	-54.5%	-0.5%	-0.1%
	44	14	1,772	32	15	2,133	4,010
	41	17	1,799	45	19	2,142	4,063
9	+7.3%	-17.6%	-1.5%	-28.9%	-21.1%	-0.4%	-1.3%
	89	29	1,900	72	20	2,238	4,348
	75	28	1,810	81	25	2,175	4,194
10	+18.7%	+3.6%	+5.0%	-11.1%	-20.0%	+2.9%	+3.7%
	125	39	1,810	107	25	2,288	4,394
	118	32	1,661	104	22	2,007	3,944
11	+5.9%	+21.9%	+9.0%	+2.9%	+13.6%	+14.0%	+11.4%
	193	63	1,665	140	37	1,786	3,884
	234	72	1,627	183	32	1,810	3,958
12	-17.5%	-12.5%	+2.3%	-23.5%	+15.6%	-1.3%	-1.9%
	263	78	1,642	196	29	1,778	3,986
	277	64	1,687	218	45	1,801	4,032
13	-5.1%	+21.9%	-2.7%	-10.1%	-35.6%	-1.3%	-2.6%
	358	86	1,673	229	35	1,797	4,178
	378	93	1,767	259	47	1,862	4,406
14	-5.3%	-7.5%	-5.3%	-11.6%	-25.5%	-3.5%	-5.2%
	448	103	1,714	273	35	1,852	4,425
	427	95	1,931	248	47	2,028	4,776
15	+4.9%	+8.4%	-11.2%	+10.1%	-25.5%	-8.7%	-7.3%
	448	91	1,824	235	64	1,947	4,609
	430	98	1,737	241	42	1,901	4,449
16	+4.2%	-7.1%	+5.0%	-2.5%	+52.4%	+2.4%	+3.6%
	242	63	728	104	25	652	1,814
	239	46	672	101	10	617	1,685
17	+1.3%	+37.0%	+8.3%	+3.0%	+150.0%	+5.7%	+7.7%
	136	18	451	63	5	409	1,082
	134	22	416	58	11	418	1,059
18	+1.5%	-18.2%	+8.4%	+8.6%	-54.5%	-2.2%	+2.2%
	37	7	99	5	1	97	246
	39	5	83	12	2	92	233
19	-5.1%	+40.0%	+19.3%	-58.3%	-50.0%	+5.4%	+5.6%
	17	0	25	1	0	51	94
	10	1	19	2	0	33	65
	+70.0%	-100.0%	+31.6%	-50.0%		+54.5%	+44.6%
TOTAL	2,433	604	25,718	1,485	297	27,554	58,091
	2,436	587	25,050	1,580	326	26,983	56,962
	-0.1%	+2.9%	+2.7%	-6.0%	-8.9%	+2.1%	+2.0%

ISAI NUMBERS AND FEES BY AREAS

TABLE 20B

ANALYSIS OF PUPIL NUMBERS AND AVERAGE TERMLY FEES
(PERCENT CHANGES ARE BASED ON 1989 FIGURES)

AREA	No. of Schools	BOYS			GIRLS			TOTAL		Boarding Fee	Weekly Boarding Fee	Day Fee Boarding Schools	Day Fee Day Schools	
		Boarding		Day	Boarding		Day	Boarding						
		Full	Weekly		Full	Weekly		Full	Weekly					
The North	49	489	59	5699	467	24	5360	956	83	11059	£1610	£1526	£839	£632
Wales	11	13	3	923	1		846	14	3	1769	£1725	£1625	£940	£669
		+18.2%		+0.3%			-1.2%	+16.7%	-25.0%	-0.4%	+1.5%	+8.3%	+6.7%	+16.8%
W Midlands	28	398	125	3007	149	13	2838	547	138	5845	£1848	£1722	£1091	£731
E Midlands	35	237	41	3545	250	42	3618	487	83	7163	£1526	£1560	£812	£802
		-2.5%	+7.8%	+6.0%	-10.8%	-18.7%	+2.5%	-4.9%	+4.5%	+4.3%	+21.1%	+18.1%	+25.4%	+11.3%
East Anglia	23	197	73	1745	56	35	2142	253	108	3887	£1638	£1561	£905	£708
		-0.8%	-8.9%	+5.5%	-3.8%	-17.6%	+2.7%	-2.4%	-13.5%	+4.1%	+6.0%	+10.2%	+11.4%	+14.1%
South & West	25	387	88	2124	201	49	2000	588	137	4124	£1719	£1605	£839	£665
		+4.0%	-5.4%	-4.9%	-1.0%	-31.9%	-1.6%	+2.3%	-17.0%	-3.4%	+9.1%	+10.4%	+9.7%	+14.1%
Greater London	46	108	18	4612	31	3	4973	139	21	9585	£1582	£1500	£962	£836
		-3.6%	-43.7%	+3.4%	-6.1%	-25.0%	+0.9%	-4.1%	-41.7%	+2.1%	+9.5%	+9.8%	+10.6%	+11.9%
South East	47	604	197	4063	330	131	5777	934	328	9840	£2049	£2112	£1382	£785
		+5.0%	+15.9%	+7.7%	+0.3%	+14.9%	+5.0%	+3.3%	+15.5%	+6.1%	+15.3%	+18.5%	+16.5%	+11.3%
All	264	2433	604	25718	1485	297	27554	3918	901	53272	£1769	£1738	£1020	£744
		-0.1%	+2.9%	+2.7%	-6.0%	-8.9%	+2.1%	-2.4%	-1.3%	+2.4%	+12.5%	+14.0%	+14.6%	+12.0%

TABLE 20C FULL TIME STAFF

	GRADUATES			NON-GRADUATES		TOTAL
	Math	Sci.	Other	Qual.	Non-Qual.	
MEN	116	248	611	212	28	1215
WOMEN	109	179	961	1293	194	2736

TABLE 20D
PART TIME STAFF

	GRADUATES		NON-GRADUATES		TOTAL
	MEN	WOMEN	MEN	WOMEN	
Number	212	849	179	1161	2401
Aggregate number of hours per week.	2167	10622	1868	14667	29324

TABLE 20E FULL TIME STAFF CHANGES

NUMBER	Coming from	Going to
Independent Schools	174	120
Maintained Schools	269	136
University, Polytechnic or Training Coll.	79	19
Industry, etc.	24	23
Other (Incl. Retirement)	197	317
TOTAL	743	615

STAFFING

TABLE 20F

NUMBER OF SIXTH FORM PUPILS

Number of Pupils who have completed their GCSE or (in Scotland) their Standard Grades. Pupils who are re-taking some of these exams are included. Each first and second year sixth form pupil is included once.			
	BOYS	GIRLS	TOTAL
Number on A-level or (in Scotland) Higher Grade or CSYS Courses	1082	956	2038
Number on O-level/CSE/GCSE/Standard Grade re-take Courses	228	81	309
Number on other Courses	67	219	286
TOTAL	1377	1256	2633

TABLE 20G
SIXTH FORM PUPILS ANALYSED BY COURSE OF STUDY

Each Sixth Form pupil is included once for each A-level or SCSYS course being studied. (e.g. a pupil taking three A-level courses is counted three times.)

AS-level courses are counted at the rate 2 AS-levels = 1 A-level and Scottish Higher Grade courses at the rate of 3 Highers = 2 A-levels.

	BOYS	GIRLS	TOTAL
Arts	458	555	1013
Classics	19	64	83
English	185	411	596
Mathematics	549	215	764
Modern Languages	109	284	393
Science/Technology	977	507	1484
Social Science	566	337	903
TOTAL	2863	2373	5236

COURSES
OF STUDY

ISAI SOURCES OF ENTRY DESTINATIONS OF LEAVERS

TABLE 20H
SOURCES OF ENTRY

		PREVIOUSLY AT SCHOOL		PREVIOUS SCHOOL OR FOREIGN	NO PREVIOUS SCHOOL	TOTAL
		IN U.K.	OVERSEAS			
BOYS	From Pre-Prep/Nursery/No School	297	138	99	28	2387
	From Prep/Primary School	966	1684	173	111	82
	From Senior School (Pre-GCSE)	331	432	109	187	1
	From Senior School (Post-GCSE)	25	45	49	62	23
GIRLS	From Pre-Prep/Nursery/No School	319	119	51	19	2239
	From Prep/Primary School	937	1448	162	105	142
	From Senior School (Pre-GCSE)	339	444	83	135	3
	From Senior School (Post-GCSE)	75	82	64	41	0
TOTAL		3289	4392	790	688	4877

TABLE 20J

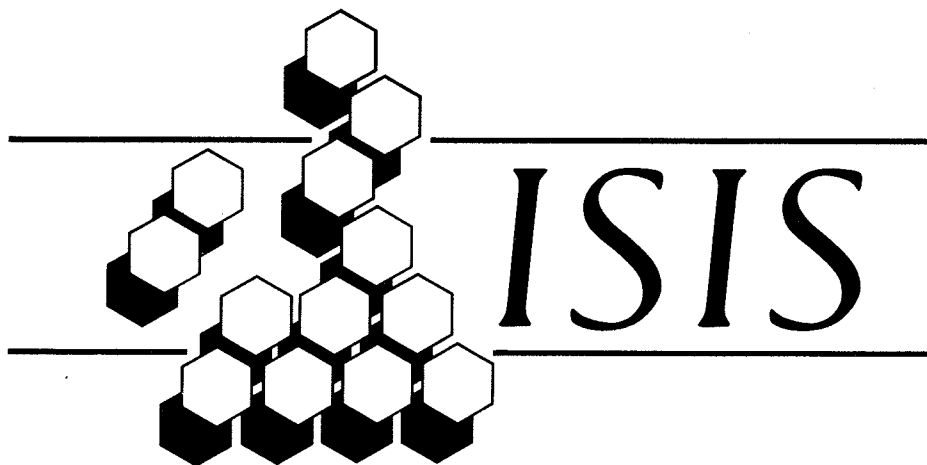
DESTINATION OF POST A-LEVEL LEAVERS
POST SCYS OR HIGHER GRADE IN SCOTLAND

			BOYS	GIRLS	TOTAL
Pupils who left to take Higher Education Courses in U.K. or Overseas	Entrants to Universities, Incl. Deferred Entry	Arts	24	86	110
		Science	75	60	135
		Engineering/Technology	46	8	54
		Social Science	45	40	85
	Degree Courses at Polytechnics	Arts	22	36	58
		Science	27	16	43
		Engineering/Technology	27	3	30
		Social Science	18	21	39
	All other H.E. Courses	Arts	32	44	76
		Science	13	7	20
Engineering/Technology		12	1	13	
Social Science		12	14	26	
Pupils who left to continue Secondary Education elsewhere		To another Indep. School	20	23	43
		To a Maintained School	30	12	42
Other Pupils who left	For further Education or training	63	120	183	
	For employment	84	61	145	
	Others	47	27	74	
TOTAL			597	579	1176

TABLE 20I

DESTINATION OF LEAVERS WHO HAVE NOT SAT A-LEVEL,
SCSYS OR SCOTTISH HIGHER EXAMS

		To Independent Schools	To L.E.A. Schools	To Schools Overseas	Unknown	TOTAL
BOYS	Leaving at end of Pre-Prep	735	267	61	100	1163
	Leaving at end of Prep	939	451	84	66	1540
	Leaving immediately following GCSE	172	783	44	617	1616
	Others leaving Pre-A-Level	139	224	45	100	508
GIRLS	Leaving at end of Pre-Prep	552	243	79	70	944
	Leaving at end of Prep	997	411	83	82	1573
	Leaving immediately following GCSE	350	859	46	524	1779
	Others leaving Pre-A-Level	177	214	82	106	579
TOTAL		4061	3452	524	1665	9702



INDEPENDENT SCHOOLS INFORMATION SERVICE

NOTES

The leaflets and other publications listed below are available from National ISIS, 56 Buckingham Gate, London SW1E 6AG and are supplied on receipt of two first class stamps for each, except where the price is stated.

NATIONAL ISIS PUBLICATIONS

PLAN EARLY — an introductory leaflet for parents interested in sending their children to independent schools

INDEPENDENT SCHOOLS — would they be right for my child?

THE RIGHT START — what preparatory schools can offer your child.

SCHOOL FEES — some ways of planning ahead to reduce costs.

SCHOLARSHIPS AND GRANTS — some ways of receiving help with school fees.

ASSISTED PLACES SCHOOLS — a list of secondary schools in the DES Assisted Places Scheme.

QUESTIONS TO ASK when you visit a school.

INDEPENDENT SCHOOLS: THE LEGAL CASE — by Anthony Lester QC and David Pannick. Price £1 (including postage).

PRIVATE EDUCATION IN THE EEC. — Price £1 (including postage).

PRIVATE EDUCATION IN THE U.S.A. AND CANADA — Price £2 (including postage).

PRIVATE EDUCATION IN AUSTRALIA AND NEW ZEALAND — Price £2 (including postage).

PRIVATE EDUCATION IN SOUTHERN AFRICA — Price £5 (including postage).

GOOD COMMUNICATIONS GUIDE — a guide to school public relations and marketing. Price £2.50 (including postage).

BOARDING: EDUCATION FOR LIFE

FIND OUT ABOUT BOARDING

CHOOSING YOUR INDEPENDENT SCHOOL

A guide for parents to 1,400 schools in membership of National ISIS with basic details including fees, pupil numbers, facilities, entry requirements and 50 pages of guidance on how to choose a school.

Available from bookshops at £4.95 or by post from National ISIS, 56 Buckingham Gate, London SW1E 6AG.

Analysis by Monkton Combe Computing Service, 1 Church Cottages, Monkton Combe, Bath BA2 7HB

Printed by Ralph Allen Press Ltd., 4/5 Milk Street, Bath

Published April 1990