



**INDEPENDENT SCHOOLS INFORMATION
SERVICE**

56 Buckingham Gate, London SW1E 6AG

Tel. no: 01/ 630 8793/4

ANNUAL CENSUS 1985

STATISTICAL SURVEY OF INDEPENDENT SCHOOLS

INDEPENDENT SCHOOLS
INFORMATION SERVICE

56 Buckingham Gate, London SW1E 6AG (01) 630 8793/4

NATIONAL ISIS was established in 1972 as an information centre by the leading Associations of independent schools in Britain. There are eight ISIS regions covering the entire United Kingdom which publish handbooks giving details of schools in their areas.

National ISIS also operates an **ADVISORY SERVICE** for families with special problems and a **CONSULTANCY SERVICE** for multi-national companies whose staff regularly require independent schools for their children. For further details and costs of these services, please write to the above address.

The first ISIS Census was compiled in 1974 and surveys of member schools have continued annually ever since.

The **ISIS ASSOCIATION** is for friends of independent schools who wish to see the continuation of a flourishing private sector of education. The annual subscription is £8 for UK members and £10 for overseas members. For further details, please write to the above address.

ISIS INTERNATIONAL helps parents living overseas to find suitable schools for their children. For further details and costs, please write to ISIS International at the above address.

INDEX

PAGE	
2	List of Associations
3 - 5	Notes on ISIS Census 1985
6 ALL	Number of schools and pupils
7 COMPARATIVE	Comparative totals and staff/pupil ratios for schools in 1984 and 1985 Census
8	Average fees
9	Contributions to fees
10	Expenditure on Buildings and Equipment
11	Children whose parents live overseas and/or in the Armed Forces
12	Leavers to Higher Education
13 NOTES	on Tables for Individual Associations
14 HMC	Number of Pupils and comparisons with 1984
15	Pupils and Fees analysed by areas; Spread of Fees
16	Staffing and Courses of Study
17	Sources of Entry and Destinations of Leavers
18 SHMIS	Number of Pupils and comparisons with 1984
19	Pupils and Fees analysed by areas; Spread of Fees
20	Staffing and Courses of Study
21	Sources of Entry and Destinations of Leavers
22 GBA	Number of Pupils and comparisons with 1984
23	Pupils and Fees analysed by areas; Spread of Fees
24	Staffing and Courses of Study
25	Sources of Entry and Destinations of Leavers
26 GSA/	Number of Pupils and comparisons with 1984
27 GBGSA	Pupils and Fees analysed by areas; Spread of Fees
28	Staffing and Courses of Study
29	Sources of Entry and Destinations of Leavers
30 IAPS	Number of Pupils and comparisons with 1984
31	Pupils and Fees analysed by areas; Spread of Fees
32	Staffing and Courses of Study
33	Sources of Entry and Destinations of Leavers
34 ISAI	Number of Pupils and comparisons with 1984
35	Pupils and Fees analysed by Areas; Spread of Fees
36	Staffing and Courses of Study
37	Sources of Entry and Destinations of Leavers
38 ALL	Number of Pupils and Comparisons with 1984
39	Pupils and Fees analysed by Areas

INDEPENDENT SCHOOLS INFORMATION SERVICE

Statistical Survey of Independent Schools - January 1985

These tables contain information derived from a survey carried out in January 1985 among members of:-

- | | |
|-------|--|
| HMC | - predominantly boys' schools whose heads are members of the Headmasters' Conference |
| SHMIS | - predominantly boys' schools whose heads are members of the Society of Headmasters of Independent Schools |
| GBA | - predominantly boys' schools whose governing bodies are members of the Governing Bodies Association but not also of HMC or SHMIS |
| GSA | - girls' schools whose heads are members of the Girls' Schools Association and of the GBGSA |
| GBGSA | - girls' schools whose governing bodies are members of the Association of Governing Bodies of Girls' Schools Association but not also of GSA |
| IAPS | - boys' and girls' schools whose heads are members of the Incorporated Association of Preparatory Schools |
| ISAI | - boys' and girls' schools whose heads are members of the Independent Schools Association Incorporated but not also of GBA, GBGSA or IAPS |

The information relates to January 1985, except that expenditure on buildings and equipment is for the financial year ending at various dates in 1984.

ISIS (Director: David Woodhead), 56 Buckingham Gate, London SW1E 6AG (Telephone: 01-630 8793/4)

NOTES ON THE 1985 ISIS CENSUS

By David Woodhead
National Director of ISIS

INTRODUCTION

Independent schools are doing well. They are attracting an increasing number of pupils. Their pupil/teacher ratios continue to improve. They are investing more in buildings and equipment - a sure sign of confidence in the future. And the rise in fees has slowed down.

MORE PUPILS

For the second year running the number of pupils at schools belonging to the leading associations of independent schools is up - from 417,020 to 419,350, an increase of 2,330, or 0.6 per cent at 1,318 schools.

This further increase in numbers is a remarkable sign of buoyancy in the independent sector against a background of economic problems and a continuing decline in the country's total school population.

The overall results of the 1985 ISIS Census are contained in table 2 on page 7. This compares the numbers of pupils at 1,318 schools which took part in both the 1984 and the 1985 surveys. (Please note that table 1 on page 6 shows the results from all 1,361 schools taking part in the 1985 Census. Tables 1 and 2 are not comparable because of the different number of schools involved.)

DAY PUPILS UP

There has been an even bigger increase in the number of day pupils than last year. Day boys increased by ~~801~~ and day girls by 2,443 - a total rise of 3,244

978

421

or 1.1 per cent. On the boarding side, although the number of boys has dropped the decline is less than last year and the number of girl boarders has increased again.

BETTER TEACHER/PUPIL RATIOS

Teacher/pupil ratios generally show a further improvement and an overall average ratio across all schools of 1:11.7. In senior schools it is 1:13.4. (Table 2, page 7).

INVESTING IN THE FUTURE

Member schools are showing increasing confidence in the future by spending substantially more in real terms on buildings and equipment. Total capital investment has increased from £83.7 million to £95.9 million (from £201 to £229 per pupil) - a rise of 14 per cent. (Table 5, page 10).

FEE RISES SLOW DOWN

Fees increased by an overall average of 7 per cent, one per cent less than last year. This is nearer the level of inflation (based on the Retail Price Index) than for many years. For independent schools, as for local education authorities, there is an 'EIR' - 'education inflation rate' - which is higher than overall inflation because education is labour and capital intensive. (Table 3, page 8).

MORE HELP WITH FEES

This year's Census shows another increase in the number of pupils receiving help from various sources towards their fees - a rise of 2,442 to 76,885. By far the largest number (40,785) - up by 1,189 - benefit from help provided by the schools themselves in the form of scholarships and bursaries. This is an increase of three per cent.

For the first time the number of pupils being helped under the Government's Assisted Places Scheme - introduced in 1981 to provide opportunities for academically able children from families of modest means to receive an education at independent schools - has topped 20,000, an increase of 5,589 over 1984. On the other hand, the number of children with places at independent schools paid for by local authorities has fallen by 3,520. (Table 4, page 9).

FEWER PUPILS FROM OVERSEAS

The total number of British and foreign pupils whose parents live overseas is down by 235 at 27,098. Within this total there are 800 fewer children of British parents living overseas (excluding Forces families) and nearly 600 more foreign pupils.

(Among foreign pupils, African nationals and children from the Middle East are down, while Americans, Canadians, Asians from East of Iran (particularly Hong Kong and Malaysia), Australasians and Europeans are up.)

The 13,272 foreign pupils, who represent 3.2 per cent of the total school population in the Census, are worth £47 million of foreign currency to Britain from their fees alone. (Table 6, page 11).

MORE SERVICE CHILDREN

The number of children of parents serving in the Armed Forces continues to increase. The total attending National ISIS schools now stands at 15,016, a rise of 162. (Table 6, page 11). According to SCEA (Service Children's Education Authority), about 2,500 attend other independent schools. Their figures also show that the proportion of non-officers' children has increased by 38% in the last four years.

MORE GO TO HIGHER EDUCATION

The Census records almost 48,000 sixth-form leavers (post O/A levels) from National ISIS schools and increasing percentages of pupils going to universities and other forms of higher education. (Table 7, page 12).

RECORD RETURN

Census figures were received from all but eight of the 1,369 schools in membership of the associations which sponsor National ISIS. This is the highest response rate so far.

We are grateful for the co-operation of the Heads, Deputy Heads, Bursars, Secretaries and other members of staff of member schools and of the Chairmen and Secretaries of the Associations listed on page 2.

Particular thanks are due, of course, to Julian Bewick and his staff at the Monkton Combe Computing Service and to John Widdowson for their great skill and care in coping with a vast amount of data and in presenting it in an intelligible form.

The 1,369 schools now in membership of National ISIS form well over half the total number of independent schools in the U.K. and educate four-fifths of all independent school pupils.

Figures for all pupils at independent schools, based on the Department of Education and Science statistics, are obtainable from National ISIS. For Scotland the information is available from Scottish ISIS, 22 Hanover Street, Edinburgh EH2 2EP.

TABLE 1

TOTAL NUMBER OF SCHOOLS, BOARDING AND DAY PUPILS IN CENSUS

N.B. THIS TABLE SHOWS THE NUMBER OF PUPILS IN ALL 1359 SCHOOLS WHICH TOOK PART IN THE 1985 CENSUS. 1344 SCHOOLS WERE INCLUDED IN THE 1984 CENSUS, SO TOTALS ON THIS PAGE SHOULD NOT BE COMPARED WITH THOSE FOR 1984.

			<u>HMC</u>	<u>SHMIS</u>	<u>GBA</u>	<u>GSA/ GBGSA</u>	<u>IAPS</u>	<u>ISAI</u>	<u>TOTAL</u>
Number of Schools			225	30	21	245	559	270	1359
			225	31	21	248	561	270	1365
Educational Charities			221	38	20	236	422	109	1046
Limited Companies			1	1	0	3	60	63	128
Proprietary			3	0	1	4	76	96	180
PUPILS	BOARDERS	Boys	41,450	6,605	2,089	32	21,161	2,457	73,794
		Girls	5,038	1,419	962	24,494	4,317	2,111	38,341
DAY		Boys	85,613	3,291	5,381	1,259	52,864	22,554	170,962
		Girls	14,017	951	1,617	82,579	22,171	22,823	144,158
TOTAL		Boys	127,063	9,896	7,470	1,291	74,025	25,011	244,756
		Girls	19,055	2,370	2,579	107,073	26,488	24,934	182,499
GRAND TOTAL			146,118	12,266	10,049	108,364	100,513	49,945	427,255

TABLE 2

NUMBER OF SCHOOLS, BOARDING AND DAY PUPILS, S/P RATIOS

Note: Numbers for 1985 are printed in **BOLD** type,
Numbers for 1984, together with % changes, are printed below.

			<u>HMC</u>	<u>SHMIS</u>	<u>GBA</u>	<u>GSA/ GBGSA</u>	<u>IAPS</u>	<u>ISAI</u>	<u>TOTAL</u>	
Number of Schools			225	39	19	242	553	240	1,318	
PUPILS	BOARDERS	Boys	41,450	6,605	1,624	5	21,141	1,996	72,821	-1.73%
			42,049	6,608	1,625	7	21,830	1,984	74,103	
		Girls	5,038	1,419	799	24,111	4,302	2,085	37,754	+0.50%
			4,635	1,325	805	24,542	4,105	2,151	37,563	
	DAY	Boys	85,613	3,291	4,798	1,102	52,550	20,727	168,081	+0.58%
			84,732	3,290	4,634	1,056	52,212	21,179	167,103	
		Girls	14,019	951	1,457	81,899	21,719	20,649	140,694	+1.76%
			13,155	932	1,446	80,874	21,165	20,679	138,251	
	TOTAL	Boys	127,063	9,896	6,422	1,107	73,691	22,723	240,902	-0.12%
			126,781	9,898	6,259	1,063	74,042	23,163	241,206	
		Girls	19,057	2,370	2,256	106,010	26,021	22,734	178,448	+1.49%
			17,790	2,257	2,251	105,416	25,270	22,830	175,814	
GRAND TOTAL			146,120	12,266	8,678	107,117	99,712	45,457	419,350	+0.55%
			144,571	12,155	8,510	106,479	99,312	45,993	417,020	
			+1.07%	+0.91%	+1.97%	+0.59%	+0.40%	-1.16%	+0.55%	

STAFF/PUPIL RATIO	- Raw	1:12.0	1: 9.9	1:10.8	1:11.5	1:11.6	1:12.3	1:11.7
		1:12.0	1:10.3	1:10.3	1:11.8	1:11.7	1:12.6	1:11.8
	- weighted	1:15.2	1:11.7	1:12.5	1:13.3		1:12.8	1:13.4
		1:15.2	1:12.3	1:12.1	1:13.6		1:13.0	1:13.5

Note: In the weighted ratios for the secondary schools, each sixth form pupil is counted as two. The figures give the average ratio for each type of school.

TABLE 3

INFLATION RATES, BURNHAM AWARDS AND AVERAGE TERMLY FEES (JANUARY TERM 85)

YEAR	BURNHAM	HMC	HMC	SHMIS	SHMIS	GBA	GBA	GSA/ GBGSA	GSA/ GBGSA	IAPS	IAPS	ISAI	ISAI	
INFLATION		BOARD	DAY	BOARD	DAY	BOARD	DAY	BOARD	DAY	BOARD	DAY	BOARD	DAY	
1980		835	400					714	345	617	292			
13.0%	14.6%	25.7%	18.6%					25.3%	17.9%	18.0%	15.7%			
1981		1049	474					894	407	728	337			
12.0%	7.5%	5.7%	22.7%					6.7%	12.5%	12.2%	28.7%			
1982		1109	645	1042	639	1067	541	954	513	816	497	878	352	
4.9%	6.0%	10.5%	9.8%	9.9%	9.5%	10.9	9.8%	11.3%	8.8%	11.4%	11.7	5.1%	9.1%	
1983		1225	708	1145	700	1183	594	1062	558	909	555	923	384	
5.1%	5.0%	8.2%	7.6%	8.2%	8.6%	8.0%	8.1%	10.1%	7.3%	7.3%	6.5%	10.2%	11.2%	
1984		1323	755	1239	765	1276	626	1165	599	978	589	1021	426	
5.0%	5.1%	7.0%	7.7%	7.3%	6.6%	5.9%	7.1%	5.8%	7.5%	8.0%	8.3%	6.3%	7.6%	
1985	6.1%	6.9%	1415	813	1330	816	1350	671	1233	644	1056	638	1085	459

NOTES:

- i) Termly fees for 1981 and earlier have been taken as one third of annual figures.
- ii) Inflation rates are from January to January, based on the increase in the Retail Price Index
- iii) Burnham increases are the average given in the year January to January.
- iv) The cost of lunches was included in Day fees for the first time in 1982, and for comparative purposes 50 was added to the 1981 termly day fee figures.
- v) After 1982 the day fees are those charged by both boarding and day schools. The Percentage increase in day fees between 1981 and 1982 should be ignored.
- vi) For more information on fees see explanatory notes on page 13 and special tables for each association.
- vii) RANGE OF FEES PER TERM - JANUARY 1985

	Boys' Senior Schools	Girls' Senior Schools	Preparatory Schools
Boarding	880-2,025	870-1,610	730-1600
Day	325-1,400	490-1,120	350-1,055

TABLE 4

NUMBER OF PUPILS RECEIVING CONTRIBUTIONS TO FEES (JANUARY 1985)

Figures for 1985 are printed in **BOLD** type, figures for 1984 are printed below.

	HMC	SHMIS	GBA	GSA/ GBGSA	IAPS	ISAI	TOTAL
from Local Education Authorities	7,312 9,584	271 412	555 815	1,298 2,037	409 423	647 741	10,492 14,012
from the school	19,790 19,592	2,063 1,812	1,152 1,210	9,472 8,884	6,566 6,509	1,742 1,589	40,785 39,596
from Government Assisted Places Scheme	12,132 8,408	377 297	533 399	6,468 4,887	467 407	46 36	20,023 14,434
from any all other sources	2,828 2,996	292 271	170 98	1,178 1,571	883 1,291	234 174	5,585 6,401
TOTALS	42,062 40,580	3,003 2,972	2,410 2,522	18,416 17,379	8,325 8,630	2,669 2,540	76,885 74,443

TABLE 5

NEW BUILDINGS AND EQUIPMENT, 1984

Figures for 1983 are printed in **BOLD** type, those for 1984 are printed below.

	<u>HMC</u>	<u>SHMIS</u>	<u>GBA</u>	<u>GSA/ GBGSA</u>	<u>IAPS</u>	<u>ISAI</u>	<u>TOTAL</u>
Amount spent on new buildings	22.6 24.2	2.9 2.2	1.8 0.8	11.8 9.1	13.1 9.5	2.6 2.8	54.8 48.6
Total (in millions of pounds)	155 167	239 181	204 100	110 86	131 95	56 61	131 116
Per Pupil (in pounds)							
Amount spent on improvements to buildings and equipment							
Total (in millions of pounds)	21.9 16.5	1.9 1.6	0.6 0.5	8.1 8.7	6.5 5.9	2.0 1.9	41.0 35.1
Per Pupil (in pounds)	150 114	158 130	66 63	76 82	65 59	45 41	98 84
TOTAL							
Total (in millions of pounds)	44.5 40.6	4.9 3.8	2.4 1.4	19.9 17.9	19.6 15.3	4.6 4.7	95.9 83.7
Per Pupil (in pounds)	305 281	396 311	270 164	186 168	196 154	101 102	229 201

TABLE 6

CHILDREN WHOSE PARENTS LIVE OVERSEAS AND/OR ARE IN THE ARMED FORCES(Figures for 1985 are printed in **BOLD** type, those for 1984 are printed below.)

	<u>HMC</u>	<u>SHMIS</u>	<u>GBA</u>	<u>GSA/ GBGSA</u>	<u>IAPS</u>	<u>ISAI</u>	<u>TOTAL</u>
<u>Parents of British Nationality</u>							
overseas(exc.H.M.Forces)	5,616	1,077	340	3,393	3,130	270	13,826
	5,845	1,138	299	3,635	3,415	312	14,644
in H.M. Forces	3,779	1,334	252	3,060	5,025	1,566	15,016
	3,873	1,315	223	3,071	4,921	1,451	14,854
<u>Parents of Foreign Nationality</u>							
African Nationals	826	254	154	820	606	321	2,981
American Nationals	875	224	164	957	686	328	3,234
(i) from U.S.A.	293	40	33	230	267	109	972
	308	29	23	223	271	100	854
(ii) From Canada	89	16	22	83	71	20	301
Other	71	15	21	79	77	14	277
(iii) American Nationals	126	18	19	135	43	25	366
	122	21	13	108	45	32	341
Middle East	273	67	35	214	151	79	819
	301	63	35	200	174	87	860
Iranians	71	26	11	64	38	48	258
	81	28	11	84	34	54	292
Asians East of Iran	1,978	404	203	1,418	407	487	4,987
	1,773	341	174	1,366	331	386	4,371
Australasian Nationals	133	31	9	107	107	17	404
	109	31	6	105	87	12	350
European Nationals	866	195	87	542	446	138	2,274
	803	217	63	519	398	110	2,110
Total Foreign Pupils	4,655	1,051	573	3,613	2,136	1,244	13,272
	4,443	969	510	3,641	2,103	1,123	12,689
<u>Total British and Foreign</u>	10,271	2,128	913	7,006	5,266	1,514	27,098
<u>Pupils whose parents live</u>	10,288	2,107	809	7,276	5,518	1,435	27,333
<u>overseas (excl. Armed Forces.)</u>							

Foreign Currency earned by fees for foreign pupils £47 million.

Foreign pupils form 3.2% of the numbers of pupils in the schools surveyed.

TABLE 7

LEAVERS (POST O/A LEVEL)

	HMC	SHMIS	GBA	GSA/GBGSA	ISAI
Number of Leavers Recorded	25,606	2,108	1,520	14,515	4,229
% to HE	61	41	40	45	15
% to University	42	17	23	26	6
% of University entrants to:					
Technology	16	12	12	4	12
Health	10	8	6	11	6
Science	20	29	28	21	30
All other Subjects	54	51	54	64	53

Statistics of Education 1983 - School Leavers (England only) published by the Department of Education and Science gives the following percentages for all leavers going to University:

	Boys	Girls
Technology	17.9	3.5
Health	6.3	11.0
Science	32.5	23.7
All other subjects	43.3	61.8

NOTES ON TABLES FOR INDIVIDUAL ASSOCIATIONS

Tables on the following pages show changes which occurred between January 1984 and January 1985.

In order that true comparisons can be made, only those schools which completed the census in BOTH years have figures included in the tables.

The small number of schools which changed affiliation during the year have their figures included in the tables of their current associations.

Age ranges for schools in England, Wales and Ireland are calculated using 1st September as a base. Those in Scotland use 1st January.

TABLES 8A to 13A show numbers of pupils in the schools. The current numbers is shown in **BOLD** print, with last year's figures printed below. The percentage change is printed as the third line of each group of three lines. In cases of large percentage change, it is wise to look at the figures above to see if the change is significant. TABLE 14A on page 38 groups this information for all associations in one table.

TABLES 8B to 13B show the numbers of pupils and average fees by areas. A blank entry in a fees column implies that there is no school of the relevant category in the area. A blank in the % change row means the change, if any, is less than 0.05%. Table 14B on page 39 groups this information together for all associations.

TABLES 8C to 13C show the spread of fees within each association.

TABLES 8D,E,F to 13D,E,F show the sources of entry and destination of leavers.

TABLES 8G,H,I to 13G,H,I deal with staffing.

TABLES 8J,K to 13J,K deal with courses of study of sixth form pupils.

HMC NUMBER OF PUPILS

TABLE 8A

NUMBER OF PUPILS IN JANUARY 1985 AND CHANGES SINCE 1984

Figures for 1985 are printed in **BOLD** those FOR 1984 AND % CHANGES ARE PRINTED BELOW

AGE AT AUG 84	BOYS		GIRLS		TOTAL
	BOARDERS	DAY	BOARDERS	DAY	
2	0	0	0	0	0
3	0	29	0	19	48
4	0	190	0	94	284
5	0	461	0	215	676
6	0	424	0	133	557
7	0	488	0	180	679
8	0	499	0	214	703
9	0	488	0	214	703
10	0	488	0	214	703
11	0	488	0	214	703
12	0	488	0	214	703
13	0	488	0	214	703
14	0	488	0	214	703
15	0	488	0	214	703
16	0	488	0	214	703
17	0	488	0	214	703
18	0	488	0	214	703
19	0	488	0	214	703
TOTAL	41,450	85,613	5,038	14,019	146,120
	42,049	84,732	4,635	13,155	144,571
	-1.4%	+1.0%	+8.7%	+6.6%	+1.1%

TABLE 8B

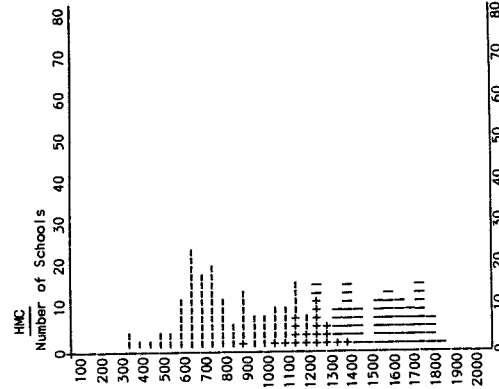
ANALYSIS OF PUPIL NUMBERS AND AVERAGE TERMLY FEES
(PERCENT CHANGES ARE BASED ON 1984 FIGURES)

AREA	No. of Schools	BOYS		GIRLS		TOTAL		Boarding Fee	Day Fee Boarding Schools	Day Fee Day Schools
		Board	Day	Board	Day	Board	Day			
SCOTLAND	17	2346	8305	662	3300	3008	11605	£1332	£ 752	£ 505
		-1.1%	-0.5%	+7.6%	+3.9%	+0.7%	+0.7%	+7.6%	+12.0%	+7.6%
THE NORTH	39	4258	22165	242	1860	4500	24025	£1339	£ 846	£ 529
		-4.0%	-0.1%	+13.6%	+18.2%	-3.2%	+1.1%	+7.9%	+11.4%	+9.9%
WALES	4	841	478	77	47	918	525	£1211	£ 817	
		-5.9%	-0.4%	-4.9%	+38.2%	-5.8%	+2.1%	+8.1%	+8.2%	
W MIDLANDS	24	4571	7599	563	2134	5134	9733	£1501	£ 980	£ 585
		-3.1%	+1.5%	+14.4%	+3.4%	-1.5%	+1.9%	+5.4%	+3.9%	+5.6%
E MIDLANDS	25	6106	8352	616	401	6722	8753	£1455	£ 881	£ 678
		-0.8%	+5.9%	+6.8%	+8.7%	-0.1%	+6.0%	+6.6%	+6.3%	+11.1%
EAST ANGLIA	13	2096	3689	405	880	2501	4569	£1363	£ 858	
		-4.4%	+0.8%	+19.5%	+2.2%	-1.2%	+1.1%	+6.6%	+7.3%	
SOUTH & WEST	30	6910	7152	1155	1288	8065	8440	£1394	£ 862	£ 568
		-1.1%	+0.1%	+4.6%	+7.1%	-0.3%	+1.1%	+6.1%	+7.3%	+8.9%
GREATER LONDON	24	1757	14393	42	1299	1799	15692	£1506	£ 903	£ 710
		+1.4%	+2.7%	+31.2%	+10.0%	+1.9%	+3.3%	+6.9%	+3.7%	+9.6%
SOUTH EAST	41	11874	7917	1106	1042	12980	8959	£1464	£1020	£ 654
		+0.1%	-1.0%	+9.1%	+14.5%	+0.8%	+0.6%	+4.3%	+6.4%	+8.8%
IRELAND	8	691	5563	170	1766	861	7329	£1036	£ 469	£ 332
		-1.8%	+0.6%	+1.2%	-1.0%	-1.3%	+0.2%	+15.6%	+21.1%	+17.6%

HMC NUMBERS AND FEES BY AREAS SPREAD OF FEES

TABLE 8C - SPREAD OF FEES

! represents two day schools
- represents two boarding schools



HMC

TABLE 8D FULL TIME STAFF

	GRADUATES			NON-GRADUATES		TOTAL
	Math	Sci.	Other	Qual.	Non-Qual.	
MEN	1,189	2,320	5,870	780	54	10,213
WOMEN	134	183	806	295	10	1,428

TABLE 8E PART TIME STAFF

	GRADUATES		NON-GRADUATES		TOTAL
	MEN	WOMEN	MEN	WOMEN	
Number	293	554	186	304	1,337
Aggregate number of hours per week.	2,950	5,939	1,720	2,771	13,380

TABLE 8F FULL TIME STAFF CHANGES

NUMBER	Coming from	Going to
Independent Schools	344	309
Maintained Schools	281	85
University, Polytechnic or Training Coll.	314	49
Industry, etc.	43	56
Other (Incl. Retirement)	98	422
TOTAL	1,080	921

STAFFING

TABLE 8G ALL PUPILS AGED 15 OR OVER ON 31.8.84 ANALYSED BY COURSE OF STUDY

			Boys	Girls		
Pupils on Post 'A' level studies			61	17	A	
GCE 'A' level courses	Subjects in Maths/ Science group only	1st year	5,366	714	B	
		2nd or later year	5,623	663	C	
	Other subjects only	1st year	5,948	1,604	D	
		2nd or later year	5,954	1,412	E	
	Subjects in both Maths/ Science and other groups	1st year	4,563	838	F	
		2nd or later year	4,290	759	G	
Other pupils beyond 'O' level			311	54	H	
Pupils on GCE 'O' level/CSE Courses			19,134	1,715	I	
All other pupils aged 15 or over on 31.8.84			172	5	J	
TOTAL			51,422	7,781	K	
'A' level MATHS						
Pupils included in lines B, C, F and G above whose course includes 'A' level Maths						
			1st year	7,018	911	L
			2nd or later year	7,059	776	M

COURSES OF STUDY

TABLE 8H ALL PUPILS IN FIFTH AND SIXTH YEARS ANALYSED BY COURSE OF STUDY

			(SCOTLAND)	
			Boys	Girls
Fifth year pupils taking a Higher grade course in four or more subjects			935	339
Fifth year pupils taking a Higher grade course in 3 subjects			94	39
Sixth year pupils taking at least one subject in C.S.Y.S.			312	118
Sixth year pupils taking at least one Advanced level subject			167	82
Sixth year pupils taking at least one additional subject on Higher grade			306	133
Sixth year pupils on Post Higher grade non-examinable course			7	5
TOTAL			1,821	716

SOURCES OF ENTRY

DESTINATION OF LEAVERS

TABLE 8I SOURCES OF ENTRY

		PREVIOUSLY AT SCHOOL		PREVIOUS SCHOOL OR NO PREVIOUS SCHOOL NOT KNOWN	T O T A L		
		IN U.K.	OVERSEAS				
		EX-INDEP. SCHOOL	EX-MAINTAINED SCHOOL	EXPATRIATE	FOREIGN		
AGE ON 31 AUGUST 1984	UNDER 8	474	413	11	6	596	1,500
	8-10	939	1,464	86	57	19	2,565
	11-12	3,361	5,957	211	145	190	9,864
	13-14	9,298	994	240	547	4	11,083
	15 and over	2,016	1,203	210	860	7	4,296
	TOTAL	16,088	10,031	758	1,615	816	29,308

TABLE 8J DESTINATION OF LEAVERS UNDER 15 ON 31.8.1984

		To Independent Schools	To L.E.A. Schools	To Overseas	Unknown	TOTAL
Leaving aged at least 12 on 1.9.84	BOYS	443	554	174	101	1,272
	GIRLS	94	86	19	7	206
Leaving aged less than 12 on 1.9.84	BOYS	250	213	47	53	563
	GIRLS	60	44	14	9	127
TOTAL		847	897	254	170	2,168

TABLE 8K LEAVERS aged 15 and over on 31.8.84 who left during the year leading up to Census Day

Pupils who left to take Higher Education Courses in U.K. or Overseas			BOYS	GIRLS	TOTAL
	Entrants to Universities, Incl. Deferred Entry	Engineering/Technology	1,659	40	1,699
		Medicine, etc.	916	189	1,105
		Science	1,883	293	2,176
		All other Subjects	4,783	1,103	5,886
	Degree Courses elsewhere incl. B.Ed.	Engineering/Technology	361	9	370
		Science	308	44	352
		All other Subjects	1,384	394	1,778
	H.N.D. T.E.C. B.E.C. Courses	Engineering/Technology	242	5	247
		Science	231	34	265
All other Subjects		735	195	930	
	Other H.E. courses	525	149	674	
Pupils who left to continue Secondary Education elsewhere having taken any G.C.E./C.S.E. exams	To another Indep. School	1,033	162	1,195	
	To a Maintained School	2,729	346	3,075	
	To Overseas	326	49	375	
Other Pupils who left having taken any G.C.E./C.S.E. exams	For further training	1,089	220	1,309	
	For employment	2,175	169	2,344	
	Others	1,199	165	1,364	
Pupils who left NOT having taken any G.C.E./C.S.E. exams.	To another Indep. School	131	14	145	
	To a Maintained School	174	22	196	
	Others	107	14	121	
TOTAL			21,990	3,616	25,606

SHMIS

NUMBER OF PUPILS

TABLE 9A

NUMBER OF PUPILS IN JANUARY 1985 AND CHANGES SINCE 1984

Figures for 1985 are printed in **BOLD** those FOR 1984 AND % CHANGES ARE PRINTED BELOW)

AGE	BOYS	GIRLS		TOTAL
AT	BOARDS	DAY	BOARDERS	DAY
AUG	84			
2	0	0	0	0
	0	0	0	0
3	0	6	0	1
	0	4	0	1
4	0	+50.0%	0	4
	0	12	0	16
	0	16	0	23
5	0	-25.0%	0	-42.9%
	0	14	0	8
	0	10	0	7
6	2	+40.0%	1	+14.3%
	1	14	1	8
	9			7
7	+100.0%	+55.6%	3	+14.3%
	4	26	0	5
	3	28	0	15
	+33.3%	-7.1%	0	46
8	18	53	7	-66.7%
	13	50	5	15
	+38.5%	+6.0%	+40.0%	23
9	40	77	16	-34.8%
	40	56	16	29
		+37.5%		22
10	93	108	42	+31.8%
	93	111	39	49
		-2.7%		38
11	388	331	114	+28.9%
	387	374	103	+3.9%
	+0.3%	-11.5%	+10.7%	114
12	571	431	123	115
	558	432	137	-0.9%
	+2.3%	-0.2%	-10.2%	-3.3%
13	1,124	565	224	126
	1,100	560	189	1,253
	+2.2%	+0.9%	+18.5%	-3.2%
14	1,253	583	242	-10.2%
	1,276	546	236	159
	-1.8%	+6.8%	+2.5%	133
15	1,288	528	261	+19.5%
	1,261	506	233	141
	+2.1%	+4.3%	+12.0%	146
16	967	278	216	-3.4%
	1,015	333	173	2,223
	-4.7%	-16.5%	+24.9%	2,153
17	671	238	137	-4.6%
	682	223	166	1,550
	-1.6%	+6.7%	-17.5%	1,599
18	163	24	27	+14.1%
	162	31	23	54
	+0.6%	-22.0%	+17.4%	57
19+	23	3	6	-5.3%
	17	1	4	7
	+35.3%	+200.0%	+50.0%	220
TOTAL	6,605	3,291	1,419	221
	6,608	3,290	1,325	220
		+	+7.1%	+0.5%
				32
				22
				+45.5%
				951
				12,266
				12,155
				+0.9%

TABLE 9B

ANALYSIS OF PUPIL NUMBERS AND AVERAGE TERMLY FEES
(PERCENT CHANGES ARE BASED ON 1984 FIGURES)

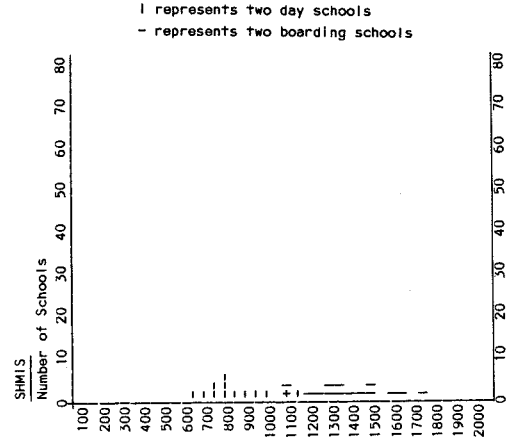
AREA	No. of Schools	BOYS		GIRLS		TOTAL		Boarding Fee	Day Fee	
		Board	Day	Board	Day	Board	Day		Boarding Schools	Day Schools
SCOTLAND	3	411	65	29	9	440	74	£1232	£ 728	
		-1.7%	+10.2%	+107.1%	-18.2%	+1.9%	+5.7%	+6.5%	+5.7%	
THE NORTH	8	797	1219	479	620	1276	1839	£1267	£ 767	
		-0.9%	-2.2%	+0.4%	+3.9%	-0.4%	-0.2%	+7.2%	+5.9%	
WALES	2	290	139			290	139	£1421	£ 919	
		+2.5%	+6.1%			+2.5%	+6.1%	+12.3%	+12.1%	
W MIDLANDS	6	801	570	244	149	1045	719	£1250	£ 764	
		-2.6%	-1.4%	+8.0%	+8.8%	-0.3%	+0.6%	+7.7%	+8.9%	
E MIDLANDS	4	801	103	70	7	871	110	£1527	£ 957	
		+2.0%	+10.8%	+6.1%		+2.4%	+10.0%	+8.5%	+4.7%	
EAST ANGLIA	1	701				701		£ 860		
		+0.9%				+0.9%		+7.5%		
SOUTH & WEST	5	1033	281	232	32	1265	313	£1362	£ 751	
		+3.0%	+9.8%	+6.4%	-13.5%	+3.6%	+6.8%	+6.9%	+7.0%	
GREATER LONDON	1	159	165	145	46	304	211	£1275	£ 797	
		-4.8%	-1.2%	+14.2%	-8.0%	+3.4%	-2.8%	+5.4%	+9.9%	
SOUTH EAST	9	1612	749	220	88	1832	837	£1403	£ 873	
		-1.2%	-1.4%	+11.7%	-5.4%	+0.2%	-1.9%	+6.3%	+5.4%	

SHMIS

NUMBERS AND FEES BY AREAS

SPREAD OF FEES

TABLE 9C - SPREAD OF FEES



SHMIS

TABLE 9D FULL TIME STAFF

	GRADUATES			NON-GRADUATES		TOTAL
	Math	Sci.	Other	Qual.	Non-Qual.	
MEN	97	194	482	151	19	943
WOMEN	21	20	105	63	4	213

TABLE 9E PART TIME STAFF

	GRADUATES		NON-GRADUATES		TOTAL
	MEN	WOMEN	MEN	WOMEN	
Number	34	67	27	63	191
Aggregate number of hours per week.	385	780	184	700	2,049

STAFFING

TABLE 9F FULL TIME STAFF CHANGES

NUMBER	Coming from	Going to
Independent Schools	39	24
Maintained Schools	40	11
University, Polytechnic or Training Coll.	36	4
Industry, etc.	3	7
Other (Incl. Retirement)	12	52
TOTAL	130	98

TABLE 9G ALL PUPILS AGED 15 OR OVER ON 31.8.84
ANALYSED BY COURSE OF STUDY

			Boys	Girls
Pupils on Post 'A' level studies			0	1
GCE 'A' level courses	Subjects in Maths/ Science group only	1st year	292	42
		2nd or later year	259	29
	Other subjects only	1st year	296	173
		2nd or later year	344	122
	Subjects in both Maths/ Science and other groups	1st year	274	80
		2nd or later year	250	48
Other pupils beyond 'O' level			58	6
Pupils on GCE 'O' level/CSE Courses			2,094	414
All other pupils aged 15 or over on 31.8.84			63	17
TOTAL			3,930	932
'A' level MATHS				
Pupils included in lines B, C, F and G above whose course includes 'A' level Maths			1st year	306
			2nd or later year	308

COURSES OF STUDY

TABLE 9H ALL PUPILS IN FIFTH AND SIXTH YEARS
ANALYSED BY COURSE OF STUDY

		(SCOTLAND)	
		Boys	Girls
Fifth year pupils taking a Higher grade course in four or more subjects	59	3	
Fifth year pupils taking a Higher grade course in 3 subjects	13	0	
Sixth year pupils taking at least one subject in C.S.Y.S.	1	0	
Sixth year pupils taking at least one Advanced level subject	23	0	
Sixth year pupils taking at least one additional subject on Higher grade	41	2	
Sixth year pupils on Post Higher grade non-examinable course	0	0	
TOTAL	137	5	

TABLE 9I SOURCES OF ENTRY

		PREVIOUSLY AT SCHOOL IN U.K.		OVERSEAS		PREVIOUS SCHOOL OR NO PREVIOUS SCHOOL NOT KNOWN		TOTAL
		EX-INDEP. SCHOOL	EX-MAINTAINED SCHOOL	EXPATRIATE	FOREIGN			
AGE ON 31 AUGUST 1984	UNDER 8	8	31	5	1	16	61	
	8-10	75	135	25	10	1	246	
	11-12	254	656	71	68	1	1,050	
	13-14	742	264	69	113	6	1,194	
	15 and over	103	147	33	150	1	434	
	TOTAL	1,182	1,233	203	342	25	2,985	

TABLE 9J DESTINATION OF LEAVERS UNDER 15 ON 31.8.1984

		To Indep- endent Schools	To L.E.A. Schools	To Schools Overseas	Unknown	TOTAL
Leaving aged at least 12 on 1.9.84	BOYS	43	107	42	4	196
	GIRLS	17	19	7	1	44
Leaving aged less than 12 on 1.9.84	BOYS	13	29	6	3	51
	GIRLS	6	10	5	2	23
TOTAL		79	165	60	10	314

SHMIS

SOURCES OF ENTRY

DESTINATION OF LEAVERS

TABLE 9K LEAVERS aged 15 and over on 31.8.84 who left during the year leading up to Census Day

			BOYS	GIRLS	TOTAL
Pupils who left to take Higher Education Courses in U.K. or Overseas	Entrants to Universities, Incl. Deferred Entry	Engineering/Technology	40	1	41
		Medicine, etc.	26	2	28
		Science	93	12	105
		All other Subjects	128	55	183
	Degree Courses elsewhere incl. B.Ed.	Engineering/Technology	26	0	26
		Science	26	4	30
		All other Subjects	87	33	120
	H.N.D. T.E.C. B.E.C. Courses	Engineering/Technology	41	2	43
		Science	30	0	30
		All other Subjects	124	21	145
		Other H.E. courses	86	32	118
Pupils who left to continue Secondary Education elsewhere having taken any G.C.E./C.S.E. exams	To another Indep. School	83	16	99	
	To a Maintained School	253	57	310	
	To Overseas	78	23	101	
Other Pupils who left having taken any G.C.E./C.S.E. exams	For further training	157	60	217	
	For employment	320	20	340	
	Others	287	31	318	
Pupils who left NOT having taken any G.C.E./C.S.E. exams.	To another Indep. School	17	5	22	
	To a Maintained School	26	4	30	
	Others	17	5	22	
TOTAL			1,742	366	2,108

GBA NUMBER OF PUPILS

TABLE 10A

NUMBER OF PUPILS IN JANUARY 1985 AND CHANGES SINCE 1984

Figures for 1985 are printed in **BOLD** those FOR 1984 AND % CHANGES ARE PRINTED BELOW)

AGE AT AUG	BOYS		GIRLS		TOTAL
	BOARDERS	DAY	BOARDERS	DAY	
31					
84					
2	0	4	0	1	5
	0	5	0	1	6
		-20.0%			-16.7%
3	0	33	0	29	62
	0	17	0	19	36
		+94.1%		+52.6%	+72.2%
4	0	81	0	69	150
	0	104	0	52	156
		-22.1%		+32.7%	-3.8%
5	1	124	0	46	171
	0	95	0	59	154
		+30.5%		-22.0%	+11.0%
6	0	110	0	74	184
	1	97	0	63	161
		+13.4%		+17.5%	+14.3%
7	2	144	0	65	211
	1	111	0	68	180
		+29.7%		-4.4%	+17.2%
8	3	133	0	72	208
	2	128	1	54	185
		+3.9%		+33.3%	+12.4%
9	6	212	6	57	281
	8	158	9	52	227
		+34.2%		+9.6%	+23.8%
10	24	206	16	62	308
	17	200	12	63	292
		+3.0%		-1.6%	+5.5%
11	55	519	25	95	694
	58	487	39	98	682
		-5.2%		-3.1%	+1.8%
12	99	541	61	116	817
	96	559	49	121	825
		+3.1%		-4.1%	-1.0%
13	266	687	116	195	1,264
	240	652	115	177	1,184
		+10.8%		+10.2%	+6.8%
14	269	649	134	180	1,232
	292	619	125	176	1,212
		-7.9%		+2.3%	+1.7%
15	312	596	144	165	1,217
	301	669	164	192	1,326
		+3.7%		-12.2%	-8.2%
16	277	443	150	134	1,004
	306	370	162	122	960
		+19.7%		+9.8%	+4.6%
17	222	274	128	86	710
	211	328	105	115	759
		-16.5%		-25.2%	-6.5%
18	75	39	18	10	142
	76	35	22	14	147
		+11.4%		-28.6%	-3.4%
19+	13	3	1	1	18
	16	0	2	0	18
		-18.7%		-50.0%	
TOTAL	1,624	4,798	799	1,457	8,678
	1,625	4,634	805	1,446	8,510
		+3.5%		+0.8%	+2.0%

TABLE 10B

ANALYSIS OF PUPIL NUMBERS AND AVERAGE TERMLY FEES
(PERCENT CHANGES ARE BASED ON 1984 FIGURES)

AREA	No. of Schools	BOYS		GIRLS		TOTAL		Boarding Fee	Day Fee Schools	Day Fee Day Schools
		Board	Day	Board	Day	Board	Day			
SCOTLAND	2	40	580	24	508	64	1088	£1395	£ 555	£ 525
		+17.6%	+0.5%	-17.2%	+4.3%	+1.6%	+2.3%	+7.7%	+7.8%	+8.0%
THE NORTH	4	69	2237	29	88	98	2325	£1040	£ 575	£ 465
		+3.0%	+5.0%	-9.4%	+6.0%	-1.0%	+5.1%	+4.7%	+3.4%	+10.3%
WALES	2	145	270	47	205	192	475	£1499	£ 824	£ 585
		-5.8%	+107.7%	+30.6%	+122.8%	+1.1%	+114.0%	+7.5%	+19.4%	+4.7%
E MIDLANDS	2	264	194	223	130	487	324	£1469	£ 801	
		+3.5%	+4.9%	+0.9%	-7.1%	+2.3%	-0.3%	+6.1%	+6.0%	
EAST ANGLIA	3	173	292	74	185	247	477	£1382	£ 772	£ 559
		-9.9%	-8.2%	-20.4%	-16.3%	-13.3%	-11.5%	+5.6%	+2.9%	+9.6%
SOUTH & WEST	3	749	350	408	165	1157	515	£1680	£ 942	£ 608
		+4.0%	+15.5%	+3.6%	+44.7%	+3.9%	+23.5%	+4.2%	+8.6%	+5.6%
GREATER LONDON	1		224		203		427			£ 842
			+5.2%		+1.0%		+3.1%			+5.0%
SOUTH EAST	2	213	691		3	213	694	£1084	£ 565	
		+4.9%	+1.9%			+4.9%	+1.9%	+7.5%	+6.9%	

GBA
NUMBERS AND FEES BY AREAS
SPREAD OF FEES

TABLE 10C - SPREAD OF FEES

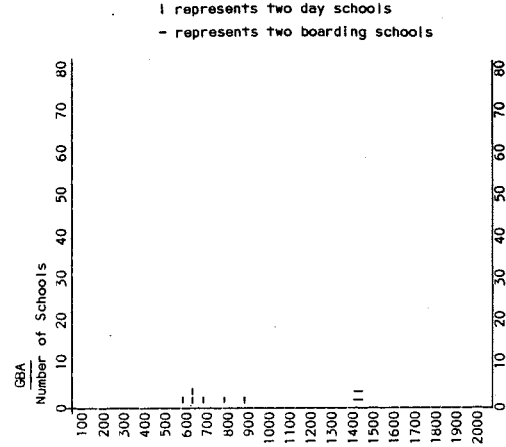


TABLE 10D FULL TIME STAFF

	GRADUATES			NON-GRADUATES		TOTAL
	Math	Sci.	Other	Qual.	Non-Qual.	
MEN	49	125	261	77	5	517
WOMEN	14	20	108	68	20	230

TABLE 10F FULL TIME STAFF CHANGES

NUMBER	Coming from	Going to
Independent Schools	19	17
Maintained Schools	40	18
University, Polytechnic or Training Coll.	19	4
Industry, etc.	1	3
Other (Incl. Retirement)	8	35
TOTAL	87	77

STAFFING

TABLE 10E PART TIME STAFF

	GRADUATES		NON-GRADUATES		TOTAL
	MEN	WOMEN	MEN	WOMEN	
Number	26	49	20	46	141
Aggregate number of hours per week.	272	549	180	535	1,536

TABLE 10G ALL PUPILS AGED 15 OR OVER ON 31.8.84
ANALYSED BY COURSE OF STUDY

Boys Girls

Pupils on Post 'A' level studies			0	0	A	
GCE 'A' level courses	Subjects in Maths/ Science group only	1st year	213	45	B	
		2nd or later year	184	32	C	
	Other subjects only	1st year	173	113	D	
		2nd or later year	140	91	E	
	Subjects in both Maths/ Science and other groups	1st year	159	47	F	
		2nd or later year	139	38	G	
Other pupils beyond 'O' level			1	0	H	
Pupils on GCE 'O' level/CSE Courses			1,015	285	I	
All other pupils aged 15 or over on 31.8.84			9	3	J	
TOTAL			2,033	654	K	
'A' level MATHS						
Pupils included in lines B, C, F and G above whose course includes 'A' level Maths			1st year	275	69	L
			2nd or later year	232	37	M

COURSES
OF STUDYTABLE 10H ALL PUPILS IN FIFTH AND SIXTH YEARS
ANALYSED BY COURSE OF STUDY

(SCOTLAND)

Boys Girls

Fifth year pupils taking a Higher grade course in four or more subjects	61	43
Fifth year pupils taking a Higher grade course in 3 subjects	12	2
Sixth year pupils taking at least one subject in C.S.Y.S.	11	12
Sixth year pupils taking at least one Advanced level subject	16	11
Sixth year pupils taking at least one additional subject on Higher grade	34	21
Sixth year pupils on Post Higher grade non-examinable course	0	0
TOTAL	134	89

TABLE 10I SOURCES OF ENTRY

		PREVIOUSLY AT SCHOOL		PREVIOUS SCHOOL NOT KNOWN	TOTAL		
		IN U.K.	OVERSEAS				
AGE ON 31 AUGUST 1984	EX-INDER SCHOOL	EX-MAINTAINED SCHOOL	EX-PATRIATE	FOREIGN			
	UNDER 8	27	74	11	13	202	327
	8-10	53	138	18	21	2	232
	11-12	131	458	30	26	2	647
	13-14	305	129	33	62	1	530
	15 and over	117	91	15	99	0	322
	TOTAL	633	890	107	221	207	2,058

TABLE 10J DESTINATION OF LEAVERS UNDER 15 ON 31.8.1984

		To Indep- endent Schools	To L.E.A. Schools	To Schools Overseas	Unknown	TOTAL
Leaving aged at least 12 on 1.9.84	BOYS	37	44	21	21	123
	GIRLS	21	22	12	11	66
Leaving aged less than 12 on 1.9.84	BOYS	34	40	10	4	88
	GIRLS	19	17	17	4	57
TOTAL		111	123	60	40	334

GBA

SOURCES OF ENTRY

DESINATION OF LEAVERS

TABLE 10K LEAVERS aged 15 and over on 31.8.84 who left during the year leading up to Census Day

		BOYS	GIRLS	TOTAL	
Pupils who left to take Higher Education Courses in U.K. or Overseas	Entrants to Universities, Incl. Deferred Entry	Engineering/Technology	38	4	42
		Medicine, etc.	14	8	22
		Science	71	27	98
		All other Subjects	128	59	187
	Degree Courses elsewhere incl. B.Ed.	Engineering/Technology	17	3	20
		Science	15	5	20
		All other Subjects	42	32	74
	H.N.D.	Engineering/Technology	10	3	13
	T.E.C.	Science	11	3	14
	B.E.C. Courses	All other Subjects	44	23	67
	Other H.E. courses	24	19	43	
Pupils who left to continue Secondary Education elsewhere having taken any G.C.E./C.S.E. exams	To another Indep. School	34	31	65	
	To a Maintained School	197	64	261	
	To Overseas	33	20	53	
Other Pupils who left having taken any G.C.E./C.S.E. exams	For further training	103	79	182	
	For employment	152	51	203	
	Others	79	30	109	
Pupils who left NOT having taken any G.C.E./C.S.E. exams.	To another Indep. School	8	9	17	
	To a Maintained School	12	6	18	
	Others	11	1	12	
TOTAL		1,043	477	1,520	

GSA/GBGSA

NUMBER OF PUPILS

TABLE 11A

NUMBER OF PUPILS IN JANUARY 1985 AND CHANGES SINCE 1984

Figures for 1985 are printed in **BOLD** those FOR 1984 AND % CHANGES ARE PRINTED BELOW)

AGE	BOYS	GIRLS		TOTAL
AT		DAY	BOARDERS	
31	BOARDERS	DAY	BOARDERS	TOTAL
AUG				
84	0	53	0	143
2	0	46	0	107
		+15.2%		+33.6%
3	0	142	0	581
		144	11	498
		-1.4%	-100.0%	+16.7%
4	0	305	0	1,173
		256	17	1,371
		+19.1%	-100.0%	+7.8%
5	0	238	1	1,685
		234	12	1,893
		+1.7%	-91.7%	+1.6%
6	2	212	0	1,876
		202	25	2,090
		+5.0%	-100.0%	+3.7%
7	0	116	33	2,837
		129	47	2,865
		-10.1%	-29.8%	-1.0%
8	0	12	108	3,357
		18	158	3,214
		-33.3%	-31.6%	+2.5%
9	2	11	307	3,882
		7	302	4,272
		+57.1%	+1.7%	-1.6%
10	1	1	699	4,825
		9	825	5,520
		-66.7%	-15.3%	+0.1%
11	0	0	2,318	9,965
		0	2,369	12,283
		0	3,210	12,103
		0	3,327	13,401
		0	3,555	13,697
		0	3,589	14,402
		0	3,771	13,589
		0	3,891	13,799
		0	3,954	13,487
		0	3,939	13,520
		0	3,131	13,375
		0	3,174	13,520
		0	3,385	13,799
		0	3,417	13,520
		0	3,581	13,520
		0	3,647	13,520
		0	3,709	13,520
		0	3,771	13,520
		0	3,891	13,520
		0	3,954	13,520
		0	3,939	13,520
		0	3,131	13,375
		0	3,174	13,520
		0	3,385	13,799
		0	3,417	13,520
		0	3,581	13,520
		0	3,647	13,520
		0	3,709	13,520
		0	3,771	13,520
		0	3,891	13,520
		0	3,954	13,520
		0	3,939	13,520
		0	3,131	13,375
		0	3,174	13,520
		0	3,385	13,799
		0	3,417	13,520
		0	3,581	13,520
		0	3,647	13,520
		0	3,709	13,520
		0	3,771	13,520
		0	3,891	13,520
		0	3,954	13,520
		0	3,939	13,520
		0	3,131	13,375
		0	3,174	13,520
		0	3,385	13,799
		0	3,417	13,520
		0	3,581	13,520
		0	3,647	13,520
		0	3,709	13,520
		0	3,771	13,520
		0	3,891	13,520
		0	3,954	13,520
		0	3,939	13,520
		0	3,131	13,375
		0	3,174	13,520
		0	3,385	13,799
		0	3,417	13,520
		0	3,581	13,520
		0	3,647	13,520
		0	3,709	13,520
		0	3,771	13,520
		0	3,891	13,520
		0	3,954	13,520
		0	3,939	13,520
		0	3,131	13,375
		0	3,174	13,520
		0	3,385	13,799
		0	3,417	13,520
		0	3,581	13,520
		0	3,647	13,520
		0	3,709	13,520
		0	3,771	13,520
		0	3,891	13,520
		0	3,954	13,520
		0	3,939	13,520
		0	3,131	13,375
		0	3,174	13,520
		0	3,385	13,799
		0	3,417	13,520
		0	3,581	13,520
		0	3,647	13,520
		0	3,709	13,520
		0	3,771	13,520
		0	3,891	13,520
		0	3,954	13,520
		0	3,939	13,520
		0	3,131	13,375
		0	3,174	13,520
		0	3,385	13,799
		0	3,417	13,520
		0	3,581	13,520
		0	3,647	13,520
		0	3,709	13,520
		0	3,771	13,520
		0	3,891	13,520
		0	3,954	13,520
		0	3,939	13,520
		0	3,131	13,375
		0	3,174	13,520
		0	3,385	13,799
		0	3,417	13,520
		0	3,581	13,520
		0	3,647	13,520
		0	3,709	13,520
		0	3,771	13,520
		0	3,891	13,520
		0	3,954	13,520
		0	3,939	13,520
		0	3,131	13,375
		0	3,174	13,520
		0	3,385	13,799
		0	3,417	13,520
		0	3,581	13,520
		0	3,647	13,520
		0	3,709	13,520
		0	3,771	13,520
		0	3,891	13,520
		0	3,954	13,520
		0	3,939	13,520
		0	3,131	13,375
		0	3,174	13,520
		0	3,385	13,799
		0	3,417	13,520
		0	3,581	13,520
		0	3,647	13,520
		0	3,709	13,520
		0	3,771	13,520
		0	3,891	13,520
		0	3,954	13,520
		0	3,939	13,520
		0	3,131	13,375
		0	3,174	13,520
		0	3,385	13,799
		0	3,417	13,520
		0	3,581	13,520
		0	3,647	13,520
		0	3,709	13,520
		0	3,771	13,520
		0	3,891	13,520
		0	3,954	13,520
		0	3,939	13,520
		0	3,131	13,375
		0	3,174	13,520
		0	3,385	13,799
		0	3,417	13,520
		0	3,581	13,520
		0	3,647	13,520
		0	3,709	13,520
		0	3,771	13,520
		0	3,891	13,520
		0	3,954	13,520
		0	3,939	13,520
		0	3,131	13,375
		0	3,174	13,520
		0	3,385	13,799
		0	3,417	13,520
		0	3,581	13,520
		0	3,647	13,520
		0	3,709	13,520
		0	3,771	13,520
		0	3,891	13,520
		0	3,954	13,520
		0	3,939	13,520
		0	3,131	13,375
		0	3,174	13,520
		0	3,385	13,799
		0	3,417	13,520
		0	3,581	13,520
		0	3,647	13,520
		0	3,709	13,520
		0	3,771	13,520
		0	3,891	13,520
		0	3,954	13,520
		0	3,939	13,520
		0	3,131	13,375
		0	3,174	13,520
		0	3,385	13,799
		0	3,417	13,520
		0	3,581	13,520
		0	3,647	13,520
		0	3,709	13,520
		0	3,771	13,520
		0	3,891	13,520
		0	3,954	13,520
		0	3,939	13,520
		0	3,131	13,375
		0	3,174	13,520
		0	3,385	13,799
		0	3,417	13,520
		0	3,581	13,520
		0	3,647	13,520
		0	3,709	13,520
		0	3,771	13,520
		0	3,891	13,520
		0	3,954	13,520
		0	3,939	13,520
		0	3,131	13,375
		0	3,174	13,520
		0	3,385	13,799
		0	3,417	13,520
		0	3,581	13,520
		0	3,647	13,520
		0	3,709	13,520
		0	3,771	13,520
		0	3,891	13,520
		0	3,954	13,520
		0	3,939	13,520
		0	3,131	13,375
		0	3,174	13,520
		0	3,385	13,799
		0	3,417	13,520
		0	3,581	13,520
		0	3,647	13,520
		0	3,709	13,520
		0	3,771	13,520
		0	3,891	13,520
		0	3,954	13,520
		0	3,939	13,520
		0	3,131	13,375
		0	3,174	13,520
		0	3,385	13,799
		0	3,417	13,520
		0	3,581	13,520
		0	3,647	13,520
		0	3,709	13,520
		0	3,771	13,520
		0	3,891	13,520
		0	3,954	13,520
		0	3,939	13,520
		0	3,131	13,375
		0	3,174	13,520
		0	3,385	13,799
		0	3,417	13,520
		0	3,581	13,520
		0	3,647	13,520
		0	3,709	13,520
		0	3,771	13,520
		0	3,891	13,520
		0	3,954	13,520
		0	3,939	13,520
		0	3,131	13,375
		0	3,174	13,520
		0	3,385	13,799
		0	3,417	13,520
		0	3,581	13,520
		0	3,647	13,520
		0	3,709	13,520
		0	3,771	13,520
		0	3,891	13,520
		0	3,954	13,520
		0	3,939	13,520
		0	3,131	13,375
		0	3,174	13,520
		0	3,385	13,799
		0	3,417	13,520
		0	3,581	13,520
		0	3,647	13,520
		0	3,709	13,520
		0	3,771	13,520
		0	3,891	13,520
		0	3,954	13,520
		0	3,939	13,520
		0	3,131	13,375
		0	3,174	13,520
		0		

TABLE 11b

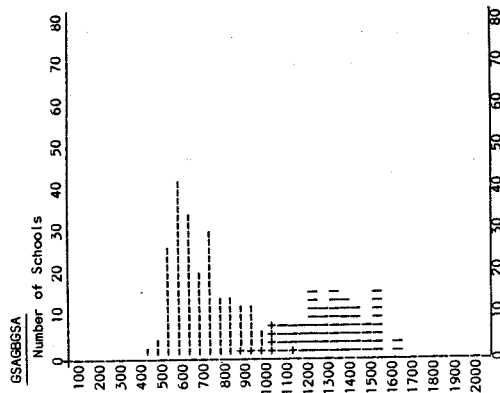
ANALYSIS OF PUPIL NUMBERS AND AVERAGE TERMLY FEES
(PERCENT CHANGES ARE BASED ON 1984 FIGURES)

AREA	No. of Schools	BOYS		GIRLS		TOTAL		Boarding Fee		Day Fee	
		Board	Day	Board	Day	Board	Day	Schools	Schools	Schools	Schools
SCOTLAND	11		22	963	4569	963	4591	£1166	£ 569	£ 523	
			-35.3%	-1.2%	-2.2%	-1.2%	-2.5%	+13.3%	+12.6%	+11.1%	
THE NORTH	39	540	540	2288	18207	2288	18747	£1226	£ 739	£ 516	
			+0.9%	+0.3%	+1.0%	+0.3%	+1.0%	+7.2%	+5.4%	+9.4%	
WALES	3			467	1058	467	1058	£1126	£ 636		
				+6.1%	+12.6%	+6.1%	+12.6%	+7.0%	+8.5%		
W MIDLANDS	24	84	84	3113	6703	3113	6787	£1261	£ 781	£ 538	
			+55.6%	-2.6%	-0.1%	-2.6%	+0.3%	+7.5%	+6.1%	+8.4%	
E MIDLANDS	28	64	64	3645	10068	3645	10132	£1200	£ 702	£ 543	
			-9.9%	+0.5%	+0.1%	+0.5%		+3.6%	+7.3%	+12.2%	
EAST ANGLIA	12	45	45	1438	3639	1438	3684	£1284	£ 794	£ 508	
			+18.4%	-0.7%	+1.9%	-0.7%	+2.1%	+16.2%	+13.9%	+4.6%	
SOUTH & WEST	29	4	107	4142	6581	4146	6688	£1195	£ 680	£ 449	
			-33.3%	-5.3%	-0.1%	+1.5%	-0.2%	+6.9%	+4.8%	+7.2%	
GREATER LONDON	32			259	17625	259	17625	£1124	£ 678	£ 584	
				-8.8%	+1.1%	-8.8%	+1.1%	+8.6%	+8.3%	+8.1%	
SOUTH EAST	63	1	200	7796	13197	7797	13397	£1273	£ 744	£ 563	
			+7.5%	-4.2%	+3.6%	-4.2%	+3.6%	+2.9%	+7.0%	+9.0%	

GSA/GBGSA
NUMBERS AND FEES BY AREAS
SPREAD OF FEES

TABLE 11c - SPREAD OF FEES

| represents two day schools
- represents two boarding schools



GSA/GBGSA

TABLE 11D FULL TIME STAFF

	GRADUATES			NON-GRADUATES		TOTAL
	Math	Sci.	Other	Qual.	Non-Qual.	
MEN	111	251	457	66	8	893
WOMEN	580	835	3,704	1,554	72	6,745

TABLE 11E PART TIME STAFF

	GRADUATES		NON-GRADUATES		TOTAL
	MEN	WOMEN	MEN	WOMEN	
Number	167	2,087	50	1,060	3,364
Aggregate number of hours per week.	2,109	25,162	651	11,842	39,764

TABLE 11G ALL PUPILS AGED 15 OR OVER ON 31.8.84
ANALYSED BY COURSE OF STUDY

Boys Girls

Pupils on Post 'A' level studies			0	23	A
GCE 'A' level courses	Subjects in Maths/ Science group only	1st year	0	1,905	B
		2nd or later year	4	1,832	C
	Other subjects only	1st year	2	3,919	D
		2nd or later year	2	3,788	E
	Subjects in both Maths/ Science and other groups	1st year	2	2,262	F
		2nd or later year	1	2,087	G
Other pupils beyond 'O' level			0	541	H
Pupils on GCE 'O' level/CSE Courses			1	12,088	I
All other pupils aged 15 or over on 31.8.84			0	457	J
TOTAL			12	28,902	K
'A' level MATHS					
Pupils included in lines B, C, F and G above whose course includes 'A' level Maths			1st year	34 2,564	L
			2nd or later year	39 2,359	M

TABLE 11F FULL TIME STAFF CHANGES

NUMBER	Coming from	Going to
Independent Schools	257	207
Maintained Schools	366	80
University, Polytechnic or Training Coll.	191	32
Industry, etc.	15	27
Other (Incl. Retirement)	137	531
TOTAL	966	877

STAFFING

TABLE 11H ALL PUPILS IN FIFTH AND SIXTH YEARS
ANALYSED BY COURSE OF STUDY

(SCOTLAND)
Boys Girls

Fifth year pupils taking a Higher grade course in four or more subjects	0	310
Fifth year pupils taking a Higher grade course in 3 subjects	0	60
Sixth year pupils taking at least one subject in C.S.Y.S.	0	97
Sixth year pupils taking at least one Advanced level subject	0	102
Sixth year pupils taking at least one additional subject on Higher grade	0	151
Sixth year pupils on Post Higher grade non-examinable course	0	52
TOTAL	0	772

COURSES OF STUDY

TABLE 11I SOURCES OF ENTRY

		PREVIOUSLY AT SCHOOL		PREVIOUS SCHOOL OR FOREIGN	NO PREVIOUS SCHOOL	TOTAL	
		IN U.K.	OVERSEAS				
AGE ON 31 AUGUST 1984	UNDER 8	915	677	41	38	1,534	3,205
	8-10	1,182	1,354	172	117	55	2,880
	11-12	4,113	3,978	309	258	60	8,718
	13-14	997	688	165	361	16	2,227
	15 and over	774	390	88	687	10	1,949
	TOTAL	7,981	7,087	775	1,461	1,675	18,979

TABLE 11J. DESTINATION OF LEAVERS UNDER 15 ON 31.8.1984.

		To Independent Schools	To L.E.A. Schools	To Schools Overseas	Unknown	TOTAL
Leaving aged at least 12 on 1.9.84	BOYS	11	9	0	0	20
	GIRLS	873	759	266	178	2,076
Leaving aged less than 12 on 1.9.84	BOYS	162	75	5	12	254
	GIRLS	850	480	178	154	1,662
TOTAL		1,896	1,323	449	344	4,012

GSA/GBGSA SOURCES OF ENTRY DESINATION OF LEAVERS

TABLE 11K LEAVERS aged 15 and over on 31.8.84 who left during the year leading up to Census Day

			BOYS	GIRLS	TOTAL
Pupils who left to take Higher Education Courses in U.K. or Overseas	Entrants to Universities, Incl. Deferred Entry	Engineering/Technology	1	156	157
		Medicine, etc.	0	433	433
		Science	0	800	800
		All other Subjects	0	2,423	2,423
	Degree Courses elsewhere incl. B.Ed.	Engineering/Technology	0	32	32
		Science	0	126	126
		All other Subjects	1	975	976
	H.N.D. T.E.C. B.E.C. Courses	Engineering/Technology	0	8	8
		Science	0	60	60
		All other Subjects	0	528	528
		Other H.E. courses	0	928	928
Pupils who left to continue Secondary Education elsewhere having taken any G.C.E./C.S.E. exams	To another Indep. School	14	1,824	1,838	
	To a Maintained School	14	2,493	2,507	
	To Overseas	0	338	338	
Other Pupils who left having taken any G.C.E./C.S.E. exams	For further training	0	1,534	1,534	
	For employment	0	796	796	
	Others	4	585	589	
Pupils who left NOT having taken any G.C.E./C.S.E. exams.	To another Indep. School	0	121	121	
	To a Maintained School	0	111	111	
	Others	0	210	210	
		TOTAL	34	14,481	14,515

IAPS NUMBER OF PUPILS

TABLE 12A

NUMBER OF PUPILS IN JANUARY 1985 AND CHANGES SINCE 1984

Figures for 1985 are printed in **BOLD** those FOR 1984 AND % CHANGES ARE PRINTED BELOW)

AGE AT 31 AUG 84	BOYS		GIRLS		TOTAL
	BOARDS	DAY	BOARDS	DAY	
2	0	272	0	279	551
	0	233	0	274	507
		+16.7%		+1.8%	+8.7%
3	0	1,452	0	1,279	2,731
	0	1,567	0	1,091	2,658
		+14.6%		+17.2%	+15.8%
4	1	3,184	1	2,338	5,524
	0	3,057	0	2,204	5,261
		+4.2%		+6.1%	+5.0%
5	8	3,712	7	2,390	6,117
	17	3,516	7	2,286	5,826
	-52.9%	+5.6%		+4.5%	+5.0%
6	83	4,217	46	2,475	6,821
	82	4,027	46	2,458	6,613
	+1.2%	+4.7%		+0.7%	+3.1%
7	745	5,766	209	2,755	9,475
	753	5,688	193	2,456	9,090
	-1.1%	+1.4%	+8.3%	+12.2%	+4.2%
8	2,150	6,844	539	2,722	12,255
	2,210	7,199	489	2,889	12,787
	-2.7%	-4.9%	+10.2%	-5.8%	-4.2%
9	3,130	7,599	836	3,009	14,574
	3,259	7,592	858	2,966	14,675
	-4.0%	+0.1%	-2.6%	+1.4%	-0.7%
10	4,150	7,603	1,069	2,807	15,629
	4,240	7,573	921	2,769	15,503
	-2.1%	+0.4%	+16.1%	+1.4%	+0.8%
11	4,912	6,137	832	1,056	12,937
	5,176	6,441	920	1,092	13,629
	-5.1%	-4.7%	-9.6%	-3.3%	-5.1%
12	5,335	4,884	650	466	11,335
	5,414	4,850	565	529	11,358
	-1.5%	+0.7%	+15.0%	-11.9%	-0.2%
13	606	561	76	69	1,312
	669	494	61	94	1,318
	-9.4%	+13.6%	+24.6%	-26.6%	-0.5%
14	17	160	16	39	232
	10	127	27	36	200
	+70.0%	+26.0%	-40.7%	+8.3%	+16.0%
15	4	110	20	34	168
	0	112	16	15	143
		-1.8%	+25.0%	+126.7%	+17.5%
16	0	38	1	1	40
	0	30	2	5	37
		+26.7%	-50.0%	-80.0%	+8.1%
17	0	4	0	0	4
	0	5	0	1	6
		-20.0%		-100.0%	-33.3%
18	0	1	0	0	1
	0	1	0	0	1
19+	0	0	0	0	0
	0	0	0	0	0
TOTAL	21,141	52,550	4,302	21,719	99,712
	21,830	52,212	4,105	21,165	99,312
	-3.2%	+0.6%	+4.8%	+2.6%	+0.4%

TABLE 12B

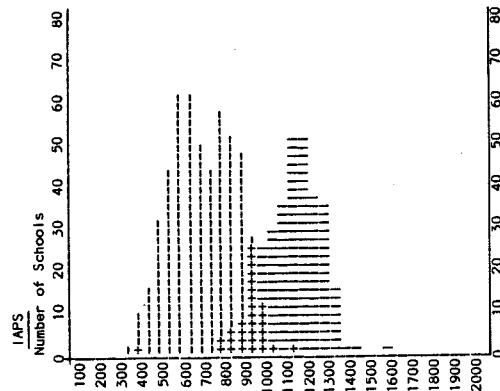
ANALYSIS OF PUPIL NUMBERS AND AVERAGE TERMLY FEES
(PERCENT CHANGES ARE BASED ON 1984 FIGURES)

AREA	No. of Schools	BOYS		GIRLS		TOTAL		Boarding Fee	Day Fee	Schools
		Board	Day	Board	Day	Board	Day			
SCOTLAND	22	774	1694	259	812	1033	2506	£1142	£660	£534
		+4.9%	-3.3%	+13.1%	+0.5%	+6.8%	-2.1%	+8.0%	+6.8%	-5.7%
THE NORTH	60	1920	4846	396	2041	2316	6887	£1007	£634	£474
		-3.6%	-1.3%	+6.2%	+0.7%	-2.0%	-0.7%	+7.5%	+7.3%	+7.6%
WALES	11	312	885	89	438	401	1323	£937	£599	£500
		-4.9%	-9.5%	+15.6%	-23.6%	-1.0%	-14.7%	+10.7%	+13.5%	+2.7%
W MIDLANDS	61	2621	4944	548	2509	3169	7453	£1024	£718	£487
		-5.9%	+1.3%	+3.2%	+4.0%	-4.4%	+2.2%	+6.9%	+8.3%	+10.8%
E MIDLANDS	72	2520	7617	450	3524	2970	11141	£1042	£716	£517
		-4.5%	+1.2%	+7.9%	+4.8%	-2.8%	+2.3%	+7.3%	+9.8%	+7.5%
EAST ANGLIA	34	1266	3417	244	1322	1510	4739	1058	£721	£444
		-5.3%	+1.0%	+2.5%	+3.1%	-4.1%	+1.6%	+6.8%	+7.1%	+10.2%
SOUTH & WEST	63	3179	4551	1012	1842	4191	6393	£1113	£713	£449
		-4.8%	-0.2%	+2.8%	+4.7%	-3.1%	+1.2%	+11.6%	+12.2%	+2.5%
GREATER LONDON	53	673	9141	2336	673	11477	£877	£726	£589	£589
		+76.2%	-0.3%	+0.3%	+0.3%	+76.2%	-0.2%	+3.9%	+6.1%	+10.2%
SOUTH EAST	174	7649	15134	1228	6828	8877	21962	£1084	£747	£513
		-4.8%	+2.0%	+4.4%	+2.8%	-3.6%	+2.3%	+8.5%	+9.8%	+7.8%
IRELAND	5	227	405	76	77	303	482	£1026	£558	£558
		-9.9%	+0.2%	-5.0%	-1.3%	-8.7%		+12.7%	+19.8%	

IAPS NUMBERS AND FEES BY AREAS SPREAD OF FEES

TABLE 12C - SPREAD OF FEES

— represents two day schools
- represents two boarding schools



IAPS

TABLE 12D FULL TIME STAFF

	GRADUATES			NON-GRADUATES		TOTAL
	Math	Sci.	Other	Qual.	Non-Qual.	
MEN	224	322	2,112	1,078	323	4,059
WOMEN	68	91	1,021	1,903	249	3,332

TABLE 12E PART TIME STAFF

	GRADUATES		NON-GRADUATES		TOTAL
	MEN	WOMEN	MEN	WOMEN	
Number	265	631	342	1,409	2,647
Aggregate number of hours per week.	2,393	7,783	2,838	16,471	29,485

STAFFING

TABLE 12F FULL TIME STAFF CHANGES

NUMBER	Coming from	Going to
Independent Schools	359	227
Maintained Schools	184	85
University, Polytechnic or Training Coll.	184	77
Industry, etc.	36	30
Other (Incl. Retirement)	169	403
TOTAL	932	822

TABLE 12I SOURCES OF ENTRY

		PREVIOUSLY AT SCHOOL		PREVIOUS SCHOOL OR FOREIGN	NO PREVIOUS SCHOOL	TOTAL
		IN U.K.	OVERSEAS			
AGE ON 31 AUGUST 1984	UNDER 8	2,869	2,402	284	206	5,804
	8-10	3,262	3,879	736	467	8,560
	11-12	811	1,241	220	327	2,616
	13-14	48	42	7	38	136
	15 and over	4	12	0	1	43
	TOTAL	6,994	7,576	1,247	1,039	22,920

IAPS

SOURCES OF ENTRY

DESINATION OF LEAVERS

TABLE 12J DESTINATION OF LEAVERS UNDER 15 ON 31.8.1984

		To Independent Schools	To L.E.A. Schools	To Schools Overseas	Unknown	TOTAL
Leaving aged at least 12 on 1.9.84	BOYS	9,917	788	210	60	10,975
	GIRLS	1,383	196	35	6	1,620
Leaving aged less than 12 on 1.9.84	BOYS	3,553	1,167	376	214	5,310
	GIRLS	2,727	593	199	137	3,656
TOTAL		17,580	2,744	820	417	21,561

ISAI NUMBER OF PUPILS

TABLE 13A

NUMBER OF PUPILS IN JANUARY 1985 AND CHANGES SINCE 1984

Figures for 1985 are printed in **BOLD** those FOR 1984 AND % CHANGES ARE PRINTED BELOW)

AGE AT 31 AUG 84	BOYS		GIRLS		TOTAL
	BOARDERS	DAY	BOARDERS	DAY	
2	0	267	0	309	576
	0	247	0	252	499
		+8.1%		+22.6%	+15.4%
3	0	921	0	998	1,919
	0	936	0	921	1,857
		-1.6%		+8.4%	+3.3%
4	0	1,632	0	1,516	3,148
	2	1,654	0	1,453	3,109
	-100.0%	-1.3%		+4.3%	+1.3%
5	6	1,724	1	1,486	3,217
	5	1,558	5	1,402	2,970
	+20.0%	+10.7%	-80.0%	+6.0%	+8.3%
6	5	1,571	6	1,381	2,963
	9	1,551	7	1,433	3,000
	-44.4%	+1.3%	-14.3%	-3.6%	-1.2%
7	19	1,444	17	1,419	2,899
	14	1,495	20	1,348	2,877
	+35.7%	-3.4%	-15.0%	+5.3%	+0.8%
8	36	1,362	56	1,354	2,808
	40	1,522	47	1,455	3,064
	-10.0%	-10.5%	+19.1%	-6.9%	-8.4%
9	63	1,436	87	1,454	3,040
	74	1,466	110	1,476	3,126
	-14.9%	-2.0%	-20.9%	-1.5%	-2.8%
10	99	1,506	158	1,492	3,255
	120	1,482	147	1,546	3,295
	-17.5%	+1.6%	+7.5%	-3.5%	-1.2%
11	220	1,449	236	1,610	3,515
	187	1,580	267	1,770	3,804
	+17.6%	-8.3%	-11.6%	-9.0%	-7.6%
12	225	1,523	296	1,706	3,750
	233	1,673	295	1,697	3,918
	-11.1%	-9.0%	+0.3%	+0.5%	-4.3%
13	323	1,658	317	1,727	4,025
	294	1,670	308	1,619	3,891
	+9.9%	-0.7%	+2.9%	+6.7%	+3.4%
14	319	1,630	313	1,616	3,878
	339	1,729	318	1,743	4,129
	-5.9%	-5.7%	-1.6%	-7.3%	-6.1%
15	333	1,643	309	1,640	3,925
	308	1,600	307	1,649	3,864
	+8.1%	+2.7%	+0.7%	-0.5%	+1.6%
16	162	544	132	516	1,354
	162	586	147	506	1,401
		-7.2%	-10.2%	+2.0%	-3.4%
17	79	293	79	301	752
	81	299	109	291	780
	-2.5%	-2.0%	-27.5%	+3.4%	-3.6%
18	79	90	66	86	321
	66	74	51	82	273
	+19.7%	+21.6%	+29.4%	+4.9%	+17.6%
19+	28	34	12	38	112
	30	47	13	29	119
	-6.7%	-27.7%	-7.7%	+31.0%	-5.9%
TOTAL	1,996	20,727	2,085	20,649	45,457
	1,984	21,179	2,151	20,679	45,993
	+0.6%	-2.1%	-3.1%	-0.1%	-1.2%

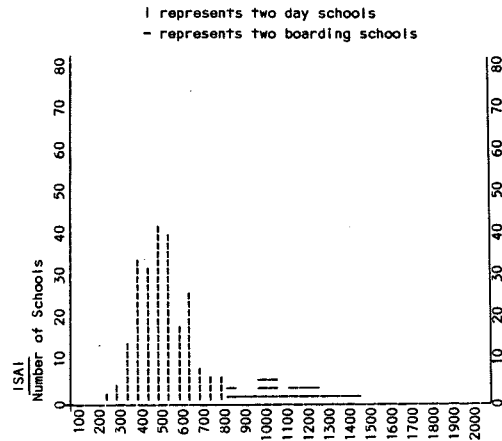
TABLE 13 B

ANALYSIS OF PUPIL NUMBERS AND AVERAGE TERMLY FEES
(PERCENT CHANGES ARE BASED ON 1984 FIGURES)

AREA	No. of Schools	BOYS		GIRLS		TOTAL		Boarding Fee	Day Fee	
		Board	Day	Board	Day	Board	Day		Boarding Schools	Day Schools
THE NORTH	41	112	3994	447	4462	559	8456	£ 966	£ 497	£ 347
		-17.6%	-4.3%	-0.4%	+0.8%	-4.4%	-1.7%	+13.0%	+8.7%	+8.7%
WALES	8	17	622	2	431	19	1053	£1155	£ 589	£ 381
		-46.9%	-6.3%		-8.5%	-40.6%	-7.2%	+10.3%	+9.3%	+9.6%
W MIDLANDS	23	92	2291	161	1579	253	3870	£ 937	£ 537	£ 394
		-10.7%	-5.7%	-0.6%	+1.4%	-4.5%	-2.9%	+7.2%	+7.9%	+7.2%
E MIDLANDS	32	370	2083	551	2107	921	4190	£1222	£ 693	£ 391
		+2.5%	-3.9%	-1.3%	-5.6%	+0.2%	-4.8%	-1.2%	-4.8%	+5.6%
EAST ANGLIA	27	386	2047	252	2501	638	4548	£1032	£ 504	£ 431
		+1.4%	+1.4%	-1.2%	-0.4%	-0.5%	+0.4%	+10.8%	+8.7%	+6.3%
SOUTH & WEST	18	423	1614	163	932	586	2546	£ 979	£ 561	£ 374
		+5.0%	+0.2%	-5.2%	-0.9%	+1.9%	-0.2%	+5.3%	+5.9%	+6.8%
GREATER LONDON	50	144	5029	140	4480	284	9509	£1307	£ 758	£ 466
		+21.0%	-0.3%	-0.3%	-0.3%	+9.7%	-0.3%	+9.4%	+9.2%	+8.0%
SOUTH EAST	41	452	3047	369	4157	821	7204	£1161	£ 664	£ 468
		+1.8%	-0.7%	-11.1%	+2.7%	-4.4%	+1.2%	+6.5%	+7.2%	+12.7%

ISAI
NUMBERS AND FEES BY AREAS
SPREAD OF PUPILS

TABLE 13C - SPREAD OF FEES



ISA1

TABLE 13D FULL TIME STAFF

	GRADUATES			NON-GRADUATES		TOTAL
	Math	Sci.	Other	Qual.	Non-Qual.	
MEN	73	168	398	221	40	900
WOMEN	61	99	598	892	192	1,842

TABLE 13E PART TIME STAFF

	GRADUATES		NON-GRADUATES		TOTAL
	MEN	WOMEN	MEN	WOMEN	
Number	230	653	151	941	1,975
Aggregate number of hours per week.	1,582	7,993	1,834	11,114	22,523

TABLE 13G ALL PUPILS AGED 15 OR OVER ON 31.8.84
ANALYSED BY COURSE OF STUDY

Boys Girls

Pupils on Post 'A' level studies			2	0	A	
GCE 'A' level courses	Subjects in Maths/ Science group only	1st year	131	66	B	
		2nd or later year	169	78	C	
	Other subjects only	1st year	98	203	D	
		2nd or later year	156	238	E	
	Subjects in both Maths/ Science and other groups	1st year	94	118	F	
		2nd or later year	108	116	G	
Other pupils beyond 'O' level			45	140	H	
Pupils on GCE 'O' level/CSE Courses			2,292	1,985	I	
All other pupils aged 15 or over on 31.8.84			127	102	J	
TOTAL			3,222	3,046	K	
'A' level MATHS						
Pupils included in lines B, C, F and G above whose course includes 'A' level Maths			1st year	159	87	L
			2nd or later year	182	69	M

TABLE 13F FULL TIME STAFF CHANGES

NUMBER	Coming from	Going to
Independent Schools	76	48
Maintained Schools	101	55
University, Polytechnic or Training Coll.	65	13
Industry, etc.	16	16
Other (Incl. Retirement)	78	182
TOTAL	336	314

STAFFING

COURSES OF STUDY

TABLE 13I SOURCES OF ENTRY

AGE ON 31 AUGUST 1984	PREVIOUSLY AT SCHOOL		PREVIOUS SCHOOL OR NO PREVIOUS SCHOOL		TOTAL		
	IN U.K.	OVERSEAS	FOREIGN	NOT KNOWN			
	EX-INDEP. SCHOOL	EX-MAINTAINED SCHOOL	EX-PATRIATE				
UNDER 8	472	656	41	79	3,260	4,508	
8-10	487	897	51	77	90	1,602	
11-12	826	1,278	64	95	40	2,303	
13-14	345	442	33	177	29	1,026	
15 and over	280	174	34	263	71	822	
TOTAL	2,410	3,447	223	691	3,490	10,261	

TABLE 13J DESTINATION OF LEAVERS UNDER 15 ON 31.8.1984

		To Indep- endent Schools	To L.E.A. Schools	To Schools Overseas	Unknown	TOTAL
Leaving aged at least 12 on 1.9.84	BOYS	220	276	53	51	600
	GIRLS	203	315	75	119	712
Leaving aged less than 12 on 1.9.84	BOYS	1,207	638	123	145	2,113
	GIRLS	1,026	600	130	186	1,942
TOTAL		2,656	1,829	381	501	5,367

ISAI

SOURCES OF ENTRY

DESINATION OF LEAVERS

TABLE 13K LEAVERS aged 15 and over on 31.8.84 who left during the year leading up to Census Day

			BOYS	GIRLS	TOTAL
Pupils who left to take Higher Education Courses in U.K. or Overseas	Entrants to Universities, Incl. Deferred Entry	Engineering/Technology	27	3	30
		Medicine, etc.	8	7	15
		Science	49	27	76
		All other Subjects	29	108	137
	Degree Courses elsewhere incl. B.Ed.	Engineering/Technology	21	1	22
		Science	14	24	38
		All other Subjects	44	59	103
	H.N.D. T.E.C. B.E.C. Courses	Engineering/Technology	9	1	10
		Science	8	18	26
		All other Subjects	22	71	93
	Other H.E. courses	49	48	97	
Pupils who left to continue Secondary Education elsewhere having taken any G.C.E./C.S.E. exams	To another Indep. School	106	209	315	
	To a Maintained School	628	858	1,486	
	To Overseas	40	49	89	
Other Pupils who left having taken any G.C.E./C.S.E. exams	For further training	308	290	598	
	For employment	452	242	694	
	Others	138	97	235	
Pupils who left NOT having taken any G.C.E./C.S.E. exams.	To another Indep. School	6	16	22	
	To a Maintained School	21	16	37	
	Others	57	49	106	
		TOTAL	2,036	2,193	4,229

**ALL
NUMBER OF PUPILS**

TABLE 14A

NUMBER OF PUPILS IN JANUARY 1985 AND CHANGES SINCE 1984

Figures for 1985 are printed in BOLD those FOR 1984 AND % CHANGES ARE PRINTED BELOW)

AGE AT AUG	BOYS		GIRLS		TOTAL
	BOARDERS	DAY	BOARDERS	DAY	
2	0	596	0	679	1,275
	0	531	0	588	1,119
		+12.2%		+15.5%	
3	0	2,583	0	2,765	5,348
	0	2,395	11	2,395	4,801
		+7.8%	-100.0%	+15.4%	
4	1	5,404	1	5,194	10,600
	2	5,298	17	4,895	10,212
		-50.0%	+2.0%	+6.1%	
5	15	6,273	9	5,830	12,127
	22	5,837	24	5,534	11,417
		-31.8%	+7.5%	+5.3%	
6	92	6,623	53	5,994	12,762
	94	6,374	79	5,963	12,510
		-2.1%	+3.9%	+0.5%	
7	775	8,559	264	7,240	16,838
	786	8,462	263	6,885	16,396
		-1.4%	+1.1%	+5.2%	
8	2,242	10,165	720	7,952	21,079
	2,309	10,543	714	8,008	21,574
		-2.9%	-3.6%	-0.7%	
9	3,339	11,541	1,272	8,876	25,028
	3,480	11,341	1,330	8,920	25,071
		-4.1%	+1.8%	-0.5%	
10	4,683	12,469	2,051	9,821	29,024
	4,786	12,201	2,006	9,629	28,622
		-2.2%	+2.2%	+2.0%	
11	6,621	17,256	3,740	14,115	41,732
	6,946	17,601	3,898	14,072	42,517
		-4.7%	-2.0%	-4.1%	
12	8,044	17,174	4,616	14,134	43,968
	8,234	17,316	4,609	14,268	44,427
		-2.3%	-0.8%	-0.9%	
13	9,883	16,594	5,140	14,389	46,006
	9,462	15,887	4,728	13,643	43,720
		+4.4%	+4.5%	+5.5%	
14	9,628	15,633	5,010	13,694	43,965
	9,879	15,533	5,071	13,291	43,774
		-2.5%	+0.6%	-1.2%	
15	9,992	15,165	5,304	13,068	43,529
	9,991	15,157	5,286	13,122	43,556
				-0.4%	
16	8,886	11,541	5,049	9,236	34,712
	9,174	11,807	4,921	9,044	34,946
		-3.1%	-2.3%	+2.1%	
17	7,333	9,566	3,816	7,193	27,908
	7,560	9,785	3,909	7,426	28,680
		-3.0%	-2.2%	-3.1%	
18	1,147	876	624	456	3,103
	1,237	936	607	509	3,289
		-7.3%	-6.4%	-10.4%	
19+	140	57	85	58	340
	141	89	90	52	372
		-0.7%	-36.0%	+11.5%	
TOTAL	72,821	168,081	37,754	140,694	419,350
	74,103	167,103	37,563	138,251	417,020
		-1.7%	+0.6%	+1.8%	

ALL NUMBERS AND FEES BY AREAS SPREAD OF FEES

TABLE 14B

ANALYSIS OF PUPIL NUMBERS AND AVERAGE TERMLY FEES
(PERCENT CHANGES ARE BASED ON 1984 FIGURES)

AREA	No. of Schools	BOYS		GIRLS		TOTAL		Boarding Fee	Day Fee Boarding	Day Fee Day
		Board	Day	Board	Day	Board	Day	Schools	Schools	Schools
ALL	1319	72850	168165	37760	140480	110610	308645	£1188	£ 750	£495
SCOTLAND	55	-1.7%	+0.6%	+0.5%	+1.8%	-0.9%	+1.1%	+7.2%	+7.9%	+8.6%
		3571	10666	1937	9198	5508	19864	£1210	£ 669	£517
THE NORTH	191	+0.2%	-0.9%	+4.0%	+0.5%	+1.5%	-0.3%	+8.4%	+9.4%	+4.4%
		7156	35001	3881	27278	11037	62279	£1137	£ 706	£455
WALES	30	-3.7%	-0.5%	+1.4%	+2.1%	-2.0%	+0.6%	+7.1%	+7.3%	+9.4%
		1605	2394	682	2179	2287	4573	£1127	£ 701	£438
W MIDLANDS	138	-5.1%	+0.5%	+7.6%	+3.3%	-1.6%	+1.8%	+9.4%	+11.3%	+8.1%
		8085	15488	4629	13074	12714	28562	£1175	£ 773	£469
E MIDLANDS	163	-4.1%	+0.4%	+0.5%	+1.5%	-2.5%	+0.9%	+6.9%	+6.9%	+8.3%
		10061	18413	5555	16237	15616	34650	£1216	£ 760	£487
EAST ANGLIA	90	-1.3%	+2.7%	+1.6%	+0.4%	-0.3%	+1.6%	+5.7%	+6.8%	+7.9%
		4622	9490	2413	8527	7035	18017	£1161	£ 732	£452
SOUTH & WEST	148	-3.8%	+0.8%	+1.7%	+1.0%	-2.0%	+0.9%	+8.1%	+7.9%	+7.7%
		12298	14055	7112	10840	19410	24895	£1206	£ 734	£441
GREATER LONDON	161	-1.3%	+0.5%	+1.3%	+2.9%	-0.3%	+1.5%	+8.5%	+8.8%	+5.4%
		2733	28952	586	25989	3319	54941	£1197	£ 793	£559
SOUTH EAST	330	+13.8%	+1.2%	+0.5%	+1.2%	+11.2%	+1.2%	+9.2%	+6.4%	+9.1%
		21801	27738	10719	25315	32520	53053	£1205	£ 787	£512
IRELAND	13	-1.7%	+0.8%	-2.1%	+3.6%	-1.8%	+2.1%	+6.2%	+8.0%	+9.0%
		918	5968	246	1843	1164	7811	£1031	£ 507	£332
		-4.0%	+0.6%	-0.8%	-1.0%	-3.3%	+0.2%	+14.1%	+21.7%	+17.6%

The leaflets and other publications listed below are available from National ISIS, 56 Buckingham Gate, London SW1E 6AG and are supplied on receipt of **2 first class stamps for each, except where the price is stated.**

NATIONAL ISIS PUBLICATIONS

- ✓ **PLAN EARLY** — an introductory leaflet for parents interested in sending their children to independent schools.
- ✓ **INDEPENDENT SCHOOLS** — would they be right for my child?
- ✓ **THE RIGHT START** — what preparatory schools can offer your child.
- ✓ **SCHOOL FEES** — some ways of planning ahead to reduce costs.
- ✓ **HOW GRANDPARENTS CAN HELP** — with school fees.
- ✓ **SCHOLARSHIPS AND GRANTS** — some ways of receiving help with school fees.
- ✓ **ASSISTED PLACES SCHOOLS** — a list of secondary schools which give grants under the Government's Assisted Places Scheme.
- ✓ **BOYS SENIOR SCHOOLS WHICH ALSO ADMIT GIRLS** — a detailed list.
- ✓ **SCHOOLS WHICH ADMIT PUPILS AGED 7 AND UNDER** — a detailed list.
- ✓ **SCHOOLS OFFERING CONCESSIONS TO SERVICE FAMILIES** — a detailed list.
- ✓ **SCHOOLS OFFERING A LEVEL RE-TAKE COURSES** — a detailed list
- ✓ **QUESTIONS TO ASK** when you visit a school.
- ✓ **BOARDING SCHOOLS DIRECTORY** — details of 800 schools which admit boarders. Price ~~£2~~^{2.50} (including postage).
- ✓ **PRIVATE EDUCATION IN THE EEC.** Price £1 (including postage).
- ✓ **GOOD COMMUNICATIONS GUIDE** — a guide for school public relations and marketing. Price £1 (including postage).

CHOOSING YOUR INDEPENDENT SCHOOL

A guide for parents to more than 1,3~~50~~⁵⁰ schools in membership of National ISIS with basic details about fees, pupil numbers and entry requirements. Also maps showing where the schools are and 50 pages of guidance on how to choose a school.

PRICE: Only £3.50 available from bookshops or direct
(for ~~£4~~⁴ from National ISIS, 56 Buckingham Gate, London SW1E 6AG.

Analysis by Monkton Combe Computing Service, 1 Church Cottages, Monkton Combe, Bath BA2 7HB.
Printed by Ralph Allen Press Ltd., 4/5 Milk Street, Bath