



**INDEPENDENT SCHOOLS INFORMATION  
SERVICE**

56 Buckingham Gate, London SW1E 6AG

Tel. no: 01/ 630 8793/4

**ANNUAL CENSUS 1986**

**STATISTICAL SURVEY OF INDEPENDENT SCHOOLS**

INDEPENDENT SCHOOLS  
INFORMATION SERVICE

56 Buckingham Gate, London SW1E 6AG (01) 630 8793/4

NATIONAL ISIS was established in 1972 as an information centre by the leading Associations of independent schools in Britain. There are eight ISIS regions covering the entire United Kingdom which publish handbooks giving details of schools in their areas.

National ISIS also operates an **ADVISORY SERVICE** for families with special problems and a **CONSULTANCY SERVICE** for multi-national companies whose staff regularly require independent schools for their children. For further details and costs of these services, please write to the above address.

The first ISIS Census was compiled in 1974 and surveys of member schools have continued annually ever since.

The **ISIS ASSOCIATION** is for friends of independent schools who wish to see the continuation of a flourishing private sector of education. The annual subscription is £8 for UK members and £10 for overseas members. For further details, please write to the above address.

**ISIS INTERNATIONAL** helps parents living overseas to find suitable schools for their children. For further details and costs, please write to ISIS International at the above address.

## INDEX

PAGE	
2	List of Associations
3 - 5	Notes on ISIS Census 1986
6 ALL	Number of schools and pupils
7 COMPARATIVE	Comparative totals and staff/pupil ratios for schools in 1985 and 1986 Census
8	Average fees
9	Contributions to fees
10	Expenditure on Buildings and Equipment
11	Children whose parents live overseas and/or in the Armed Forces
12	Leavers to Higher Education
13 NOTES	on Tables for Individual Associations
14 HMC	Number of Pupils and comparisons with 1985
15	Pupils and Fees analysed by areas; Spread of Fees
16	Staffing and Courses of Study
17	Sources of Entry and Destinations of Leavers
18 SHMIS	Number of Pupils and comparisons with 1985
19	Pupils and Fees analysed by areas; Spread of Fees
20	Staffing and Courses of Study
21	Sources of Entry and Destinations of Leavers
22 GBA	Number of Pupils and comparisons with 1985
23	Pupils and Fees analysed by areas; Spread of Fees
24	Staffing and Courses of Study
25	Sources of Entry and Destinations of Leavers
26 GSA/	Number of Pupils and comparisons with 1985
27 GBGSA	Pupils and Fees analysed by areas; Spread of Fees
28	Staffing and Courses of Study
29	Sources of Entry and Destinations of Leavers
30 IAPS	Number of Pupils and comparisons with 1985
31	Pupils and Fees analysed by areas; Spread of Fees
32	Staffing and Courses of Study
33	Sources of Entry and Destinations of Leavers
34 ISAI	Number of Pupils and comparisons with 1985
35	Pupils and Fees analysed by Areas; Spread of Fees
36	Staffing and Courses of Study
37	Sources of Entry and Destinations of Leavers
38 ALL	Number of Pupils and Comparisons with 1985
39	Pupils and Fees analysed by Areas



## INDEPENDENT SCHOOLS INFORMATION SERVICE

### Statistical Survey of Independent Schools - January 1986

These tables contain information derived from a survey carried out in January 1986 among members of:-

- |       |  |
|-------|--|
| HMC   | - predominantly boys' schools whose heads are members of the Headmasters' Conference   |
| SHMIS | - predominantly boys' schools whose heads are members of the Society of Headmasters of Independent Schools                                   |
| GBA   | - predominantly boys' schools whose governing bodies are members of the Governing Bodies Association but not also of HMC or SHMIS            |
| GSA   | - girls' schools whose heads are members of the Girls' Schools Association and of the GBGSA  |
| GBGSA | - girls' schools whose governing bodies are members of the Association of Governing Bodies of Girls' Schools Association but not also of GSA |
| IAPS  | - boys' and girls' schools whose heads are members of the Incorporated Association of Preparatory Schools                                    |
| ISAI  | - boys' and girls' schools whose heads are members of the Independent Schools Association Incorporated but not also of GBA, GBGSA or IAPS    |

The information relates to January 1986, except that expenditure on buildings and equipment is for the financial year ending at various dates in 1985.

ISIS (Director: David Woodhead), 56 Buckingham Gate, London SW1E 6AG (Telephone: 01-630 8793/4)

## NOTES ON THE 1986 ISIS CENSUS

By David Woodhead  
Director of National ISIS

Independent schools are attracting an increasing number of pupils and a rising proportion of the school population.

The 1986 Census returns from schools in membership of National ISIS show an increase of almost 5,000 pupils in the past year. This is a rise of 1.2 per cent - double the percentage increase in the previous year and the biggest boost in numbers recorded for at least five years.

On Census day in January 1986 there were 427,672 pupils attending the 1,328 schools in the United Kingdom and Eire which took part in the survey (Table 1). However, comparisons are based on the 1,289 schools which participated in both the 1985 and 1986 surveys. In these there were 419,475 pupils aged between two and 19, compared with 414,562 a year ago. (Table 2).

Throughout the UK and Eire there are more than 2,600 independent schools with 550,000 children, representing about 6.5 per cent of the total school population. Over half of these schools, containing about four-fifths of the pupils, are members of National ISIS.

The figures should be seen in the context of the continuing drop in the school population nationally. For example, the Department of Education and Science estimates that in the past year secondary school rolls have fallen by 3.7 per cent, while primary rolls have risen by 0.3 per cent. (The secondary school population will continue to fall until the early 1990s and primary numbers will rise during that period).

## DAY UP, BOARDING DOWN

The increase in the number of day pupils is even greater than last year. Day boys increased by 1,848 and day girls by 3,998 - a total rise of 5,846 or 4 per cent. Boarding numbers overall dropped by 933 or 0.3 per cent (despite a greater number of girl boarders), less than the decline recorded in 1985. A detailed breakdown of children by ages between 2 and 19 shows that pupils have been gained at every age except 9, 10, 12 and 13, whereas last year there were losses from 15 upwards. It also confirms the strengthening of independent schools at the pre-preparatory stage (two to seven-year-olds) where the numbers have risen by 5 per cent. (Table 14A).

## FEE UP

Fees increased by an overall average of 9 per cent (slightly over that figure for boarding, slightly under for day), compared with 7 per cent last year. This is most likely to be due to schools preparing to face higher levels of teachers' pay. (Table 3).

Total expenditure on new buildings and equipment and improvements to buildings in 1985 was £106.7 million - an increase of £9.4 million over 1984. This is equivalent to £254 per pupil (compared with £234 in 1984) and represents a smaller percentage rise than in the previous year. (Table 5).

## SCHOOLS GIVE MORE HELP

The Census shows a bigger increase than last year in the number of pupils receiving help from various sources towards their fees - a rise of 3,971 to 80,339. More than half of these children (42,989) are receiving contributions from the schools themselves in the forms of bursaries and scholarships. This is an increase of 2,352 or six per cent - double the increase in the previous year. (Table 4).

## FEWER FROM OVERSEAS

The total number of children whose parents live overseas (excluding Forces families) continues to fall. The number of foreign pupils in UK independent schools is down by 26 and remains at 3.2 per cent of the total school population in the Census. The fees of these 13,626 foreign pupils are estimated to be worth £50 million to Britain in foreign currency. There are 265 fewer children of British parents abroad but 41 more children of parents serving in the armed forces, who now total 15,064. (Table 6).

## CONCLUSION

An increase in independent school pupils had been widely predicted because of the effects of the teachers' pay dispute on the maintained schools. The actual increase is much less than some of the wilder speculation suggested. How much of it is attributable to the disruption elsewhere no-one can say with any certainty. Some of it may be and the independent sector derives no satisfaction from that factor. Many staff and parents in independent schools have shared the anxieties of their colleagues and friends in the maintained sector during a year of unprecedented turmoil.

So far as rising numbers are concerned, it should be remembered that last year's census also showed an increase in independent school rolls and that was before any effects of the teachers' dispute had been felt. The 1986 figures confirm the trend towards our schools which pre-dated the dispute.

## ACKNOWLEDGEMENTS

Census forms were received this year from all but 25 of the 1,353 schools belonging to the Associations which sponsor National ISIS. We are grateful to the Heads, Deputy Heads, Bursars, Secretaries and other members of staff of these schools and to the Chairmen, President and Secretaries of the Associations listed on page three.

Julian Bewick and the staff of the Monkton Combe Computing Service again coped magnificently with the vast amount of data and John Widdowson earned the thanks of school staff who needed help and advice in completing their returns. All who use the information in this survey are in their debt.

## THE INDEPENDENT SECTOR

Figures for pupils at all independent schools in England and Wales, based on the Department of Education and Science statistics, are available from National ISIS. For Scotland the information is available from ISIS Scotland, 22 Hanover Street, Edinburgh EH2 2EP.

TABLE 1

TOTAL NUMBER OF SCHOOLS, BOARDING AND DAY PUPILS IN CENSUS

N.B. THIS TABLE SHOWS THE NUMBER OF PUPILS IN ALL 1328 SCHOOLS WHICH TOOK PART IN THE 1986 CENSUS. 1359 SCHOOLS WERE INCLUDED IN THE 1985 CENSUS, SO TOTALS ON THIS PAGE SHOULD NOT BE COMPARED WITH THOSE FOR 1985.

			<u>HMC</u>	<u>SHMIS</u>	<u>GBA</u>	<u>GSA/ GBGSA</u>	<u>IAPS</u>	<u>ISAI</u>	<u>TOTAL</u>
Number of Schools in census			226	43	18	248	538	255	1,328
Number of member schools			226	43	19	252	548	265	1,353
Educational Charities			221	43	17	242	426	110	1,059
Limited Companies			0	0	0	4	55	61	120
Proprietary			3	0	0	2	68	81	154
PUPILS	BOARDERS	Boys	40,577	6,863	1,631	30	19,875	2,545	71,521
		Girls	5,796	1,707	672	23,906	4,547	2,110	38,738
	DAY	Boys	86,242	3,606	5,134	1,463	53,485	20,670	170,600
		Girls	15,179	1,173	1,087	83,854	22,935	22,585	146,813
	TOTAL	Boys	126,819	10,469	6,765	1,493	73,360	23,215	242,121
		Girls	20,975	2,880	1,759	107,760	27,482	24,695	185,551
	GRAND TOTAL		147,794	13,349	8,524	109,253	100,842	47,910	427,672



TABLE 2

NUMBER OF SCHOOLS, BOARDING AND DAY PUPILS, S/P RATIOS

Note: Numbers for 1986 are printed in **BOLD** type,  
Numbers for 1985, together with % changes, are printed below.

			<u>HMC</u>	<u>SHMIS</u>	<u>GBA</u>	<u>GSA/ GBGSA</u>	<u>IAPS</u>	<u>ISAI</u>	<u>TOTAL</u>	
Number of Schools			226	41	18	241	532	231	1,289	
PUPILS	BOARDERS	Boys	40,577	6,757	1,631	30	19,832	2,150	70,977	
			41,450	6,843	1,599	32	20,445	2,285	72,654	-2.30%
		Girls	5,796	1,602	672	23,575	4,528	1,849	38,022	
			5,038	1,562	656	23,986	4,057	1,979	37,278	+1.99%
	DAY	Boys	86,242	3,443	5,134	1,355	52,522	19,213	167,909	
			86,107	3,379	5,000	1,255	51,266	19,054	166,061	+1.11%
		Girls	15,179	1,041	1,087	81,834	22,632	20,794	142,567	
			14,417	1,005	1,036	80,265	21,554	20,292	138,569	+2.88%
	TOTAL	Boys	126,819	10,200	6,765	1,385	72,354	21,363	238,886	
			127,557	10,222	6,599	1,287	71,711	21,339	238,715	+0.72%
		Girls	20,975	2,643	1,759	105,409	27,160	22,643	180,589	
			19,455	2,567	1,692	104,251	25,611	22,271	175,847	+2.69%
GRAND TOTAL			147,794	12,843	8,524	106,794	99,514	44,006	419,475	
			147,012	12,789	8,291	105,538	97,322	43,610	414,562	+1.18%
			+0.53%	+0.42%	+2.81%	+1.19%	+2.25%	+0.90%	+1.18%	
STAFF/PUPIL RATIO			- Raw	1:11.7	1: 9.9	1:11.1	1:11.7	1:11.6	1:12.5	1:11.7
				1:11.9	1: 9.9	1:10.9	1:11.6	1:11.6	1:12.6	1:11.7
			- weighted	1:14.7	1:11.7	1:13.1	1:14.5		1:12.8	1:13.6
				1:14.9	1:11.7	1:12.9	1:13.3		1:13.0	1:13.4
Note: In the weighted ratios for the secondary schools, each sixth form pupil aged 16 and over is counted as two. The figures give the average ratio for each type of school.										

Note: In the weighted ratios for the secondary schools, each sixth form pupil aged 16 and over is counted as two. The figures give the average ratio for each type of school.

TABLE 3

## INFLATION RATES, BURNHAM AWARDS AND AVERAGE TERMLY FEES (JANUARY TERM 86)

YEAR	BURNHAM	HMC	HMC	SHMIS	SHMIS	GBA	GBA	GSA/ GBGSA	GSA/ GBGSA	IAPS	IAPS	ISAI	ISAI	
INFLATION		BOARD	DAY	BOARD	DAY	BOARD	DAY	BOARD	DAY	BOARD	DAY	BOARD	DAY	
1981		1049	474					894	407	728	337			
	12.0%	7.5%	5.7%	22.7%				6.7%	12.5%	12.2%	28.7%			
1982		1109	645	1042	639	1067	541	954	513	816	497	878	352	
	4.9%	6.0%	10.5%	9.8%	9.9%	9.5%	10.9	9.8%	11.3%	8.8%	11.4%	11.7	5.1%	9.1%
1983		1225	708	1145	700	1183	594	1062	558	909	555	923	384	
	5.1%	5.0%	8.2%	7.6%	8.2%	8.6%	8.0%	8.1%	10.1%	7.3%	7.3%	6.5%	10.2%	11.2%
1984		1323	755	1239	765	1276	626	1165	599	978	589	1021	426	
	5.0%	5.1%	7.0%	7.7%	7.3%	6.6%	5.9%	7.1%	5.8%	7.5%	8.0%	8.3%	6.3%	7.6%
1985		1416	812	1332	814	1226	618	1235	643	1056	635	1075	471	
	6.1%	6.9%	8.4%	7.0%	7.6%	7.3%	5.3%	11.3%	8.6%	8.2%	10.8%	8.6%	13.0%	9.4%
1986	6.1%	6.9%	1535	869	1432	873	1290	688	1342	696	1169	690	1215	515

## NOTES:

- i) Termly fees for 1981 have been taken as one third of annual figures.
- ii) Inflation rates are from January to January, based on the increase in the Retail Price Index
- iii) The Burnham figure is the increase in teachers' pay applicable from 1st April 1985.
- iv) The cost of lunches was included in Day fees for the first time in 1982, and for comparative purposes £50 was added to the 1981 termly day fee figures.
- v) After 1982 the day fees are those charged by both boarding and day schools. The Percentage increase in day fees between 1981 and 1982 should be ignored.
- vi) For more information on fees see explanatory notes on page 13 and special tables for each association.
- vii) APPROXIMATE RANGE OF FEES PER TERM - JANUARY 1986
 

	Boys' Senior Schools	Girls' Senior Schools	Preparatory Schools
Boarding	950-2,200	1000-1,700	800-1,650
Day	360-1,500	500-1,150	350-1,100

TABLE 4

NUMBER OF PUPILS RECEIVING CONTRIBUTIONS TO FEES (JANUARY 1986)

Figures for 1986 are printed in **BOLD** type, figures for 1985 are printed below.

	HMC	SHMIS	GBA	GSA/ GBGSA	IAPS	ISAI	TOTAL
from Local Education Authorities	<b>7,229</b> 7,312	<b>211</b> 274	<b>505</b> 552	<b>976</b> 1,313	<b>323</b> 408	<b>519</b> 530	<b>9,763</b> 10,389
from the school	<b>20,585</b> 19,834	<b>2,262</b> 2,037	<b>1,261</b> 950	<b>9,319</b> 9,297	<b>7,320</b> 6,760	<b>2,242</b> 1,759	<b>42,989</b> 40,637
from Government Assisted Places Scheme	<b>13,769</b> 12,182	<b>379</b> 328	<b>639</b> 532	<b>7,531</b> 6,227	<b>576</b> 460	<b>49</b> 46	<b>22,943</b> 19,775
from all other sources	<b>2,027</b> 2,830	<b>297</b> 296	<b>126</b> 152	<b>1,230</b> 1,166	<b>790</b> 887	<b>174</b> 236	<b>4,644</b> 5,567
TOTALS	<b>43,610</b> 42,158	<b>3,149</b> 2,935	<b>2,531</b> 2,186	<b>19,056</b> 18,003	<b>9,009</b> 8,515	<b>2,984</b> 2,571	<b>80,339</b> 76,368

TABLE 5

NEW BUILDINGS AND EQUIPMENT, 1985

Figures for 1985 are printed in **BOLD** type, those for 1984 are printed below.

	<u>HMC</u>	<u>SHMIS</u>	<u>GBA</u>	<u>GSA/ GBGSA</u>	<u>IAPS</u>	<u>ISAI</u>	<u>TOTAL</u>
Amount spent on new buildings							
Total (in millions of pounds)	<b>23.8</b> 23.0	<b>3.9</b> 3.4	<b>1.3</b> 2.3	<b>16.5</b> 11.5	<b>16.0</b> 13.6	<b>2.3</b> 2.7	<b>63.7</b> 56.5
Per Pupil (in pounds)	<b>160</b> 156	<b>301</b> 262	<b>147</b> 283	<b>154</b> 109	<b>160</b> 139	<b>51</b> 61	<b>151</b> 136
Amount spent on improvements to buildings and equipment							
Total (in millions of pounds)	<b>22.0</b> 20.9	<b>1.6</b> 2.0	<b>1.1</b> 0.5	<b>8.9</b> 8.6	<b>7.4</b> 6.9	<b>2.0</b> 1.9	<b>43.0</b> 40.8
Per Pupil (in pounds)	<b>149</b> 142	<b>124</b> 153	<b>129</b> 62	<b>83</b> 81	<b>74</b> 70	<b>46</b> 44	<b>102</b> 98
TOTAL							
Total (in millions of pounds)	<b>45.8</b> 43.9	<b>5.5</b> 5.3	<b>2.4</b> 2.9	<b>25.4</b> 20.1	<b>23.4</b> 20.5	<b>4.3</b> 4.6	<b>106.7</b> 97.3
Per Pupil (in pounds)	<b>309</b> 298	<b>425</b> 416	<b>277</b> 345	<b>237</b> 190	<b>234</b> 210	<b>97</b> 105	<b>254</b> 234

TABLE 6

CHILDREN WHOSE PARENTS LIVE OVERSEAS AND/OR ARE IN THE ARMED FORCES(Figures for 1986 are printed in **BOLD** type, those for 1985 are printed below.)

	<u>HMC</u>	<u>SHMIS</u>	<u>GBA</u>	<u>GSA/ GBCSA</u>	<u>IAPS</u>	<u>ISAI</u>	<u>TOTAL</u>
<u>Parents of British Nationality</u>							
overseas(exc.H.M.Forces)	<b>5,569</b>	<b>1,001</b>	<b>252</b>	<b>3,348</b>	<b>3,060</b>	<b>335</b>	<b>13,565</b>
	5,616	1,138	281	3,400	3,110	285	13,830
in H.M. Forces	<b>3,840</b>	<b>1,424</b>	<b>204</b>	<b>3,079</b>	<b>5,024</b>	<b>1,493</b>	<b>15,064</b>
	3,775	1,454	179	3,186	4,911	1,518	15,023
<u>Parents of Foreign Nationality</u>							
African Nationals	<b>799</b>	<b>249</b>	<b>126</b>	<b>726</b>	<b>545</b>	<b>272</b>	<b>2,717</b>
	826	265	155	834	592	307	2,979
(i) from U.S.A.	<b>320</b>	<b>56</b>	<b>27</b>	<b>267</b>	<b>286</b>	<b>141</b>	<b>1,097</b>
American	293	40	35	245	265	153	1,031
(ii) from Canada	<b>93</b>	<b>26</b>	<b>5</b>	<b>74</b>	<b>56</b>	<b>18</b>	<b>272</b>
Nationals	89	25	13	86	71	22	306
(iii) other	<b>127</b>	<b>28</b>	<b>10</b>	<b>150</b>	<b>48</b>	<b>32</b>	<b>395</b>
	126	18	20	137	37	31	369
Middle East	<b>292</b>	<b>79</b>	<b>20</b>	<b>193</b>	<b>157</b>	<b>130</b>	<b>871</b>
	272	57	34	217	155	110	845
Iranians	<b>82</b>	<b>29</b>	<b>15</b>	<b>46</b>	<b>29</b>	<b>69</b>	<b>270</b>
	71	26	14	62	44	73	290
Asians East of Iran	<b>2,041</b>	<b>486</b>	<b>203</b>	<b>1,587</b>	<b>393</b>	<b>482</b>	<b>5,192</b>
	1,978	431	213	1,461	403	548	5,034
Australasian Nationals	<b>180</b>	<b>31</b>	<b>8</b>	<b>95</b>	<b>112</b>	<b>24</b>	<b>450</b>
	133	34	6	126	110	22	431
European Nationals	<b>897</b>	<b>173</b>	<b>82</b>	<b>560</b>	<b>419</b>	<b>231</b>	<b>2,362</b>
	867	170	82	589	452	207	2,367
Total Foreign Pupils	<b>4,831</b>	<b>1,157</b>	<b>496</b>	<b>3,698</b>	<b>2,045</b>	<b>1,399</b>	<b>13,626</b>
	4,655	1,066	572	3,757	2,129	1,473	13,652
<u>Total British and Foreign</u>	<b>10,400</b>	<b>2,158</b>	<b>748</b>	<b>7,046</b>	<b>5,105</b>	<b>1,734</b>	<b>27,191</b>
<u>Pupils whose parents live</u>	<b>10,271</b>	<b>2,204</b>	<b>853</b>	<b>7,157</b>	<b>5,239</b>	<b>1,758</b>	<b>27,482</b>
<u>overseas (excl. Armed Forces.)</u>							

Foreign Currency earned by fees for foreign pupils £50 million.

Foreign pupils form 3.2% of the numbers of pupils in the schools surveyed.

TABLE 7

LEAVERS (POST O/A LEVEL)

	HMC	SHMIS	GBA	GSA	ISAI
Number of Leavers Recorded	25,291	2,454	1,316	14,293	3,879
% to HE	61	34	37	44	16
% to University	44	13	20	26	5
% of University entrants to:					
Technology	14	19	16	4	6
Medicine, etc.	9	4	6	10	8
Science	20	28	27	20	24
All other Subjects	56	47	50	65	60

Statistics of Education 1984 - School Leavers (England only) published by the Department of Education and Science gives the following percentages for all leavers going to University:

	Boys	Girls
Technology	20.4	3.2
Medicine, etc.	7.5	9.5
Science	31.3	23.1
All other subjects	40.8	64.2

## NOTES ON TABLES FOR INDIVIDUAL ASSOCIATIONS

Tables on the following pages show changes which occurred between January 1985 and January 1986.

In order that fair comparisons can be made, only those schools which completed the census in BOTH years have figures included in the tables.

A few schools changed the associations to which they are affiliated during the year between the two census days. Their figures have been included in tables for their current association.

Age ranges for schools in England, Wales and Ireland are calculated using 1st September as a base. Those in Scotland use 1st January.

TABLES 8A TO 13A show the numbers of pupils in the schools. The current number is shown in bold print, with last year's figure printed below. The percentage change is printed as the third line of each group of three lines. In cases of large percentage change, it is wise to look at the figures above to see if the change is significant.

TABLES 8B to 13B show the numbers of pupils and the average fees by areas. A blank entry in a fees column implies there is no school of the relevant category in the area. A blank in the % change row means there is no significant change.

TABLES 8C to 13C show the spread of fees within each association.

TABLES 8D,E,F to 13D,E,F show the sources of entry and destination of leavers. Proportions shown in each category are believed to be accurate, but total numbers are higher than those shown. These tables are amongst the most difficult for schools to complete accurately, as sources and destinations are not always known.

TABLES 8G,H,I to 13G,H,I deal with staffing.

TABLES 8J,K to 13J,K deal with courses of study of sixth form pupils.

# HMC

## NUMBER OF PUPILS

TABLE 8A

### NUMBER OF PUPILS IN JANUARY 1986 AND CHANGES SINCE 1985

Figures for 1986 are printed in **BOLD** those for 1985 and % changes are printed below

AGE	BOYS	GIRLS	TOTAL
AT	BOARDERS	DAY	DAY
31	BOARDERS	DAY	DAY
AUG	BOARDERS	DAY	DAY
85	BOARDERS	DAY	DAY
2	0	0	0
3	0	0	0
4	0	0	0
5	0	0	0
6	0	0	0
7	8	1	9
8	5	2	7
9	42	6	48
10	35	10	45
11	95	19	114
12	98	20	118
13	323	67	390
14	316	67	383
15	1,055	224	1,279
16	1,046	215	1,261
17	1,708	337	2,045
18	1,814	276	2,090
19+	6,990	625	7,615
TOTAL	7,564	552	8,116



TABLE 8B

ANALYSIS OF PUPIL NUMBERS AND AVERAGE TERMLY FEES  
(PERCENT CHANGES ARE BASED ON 1985 FIGURES)

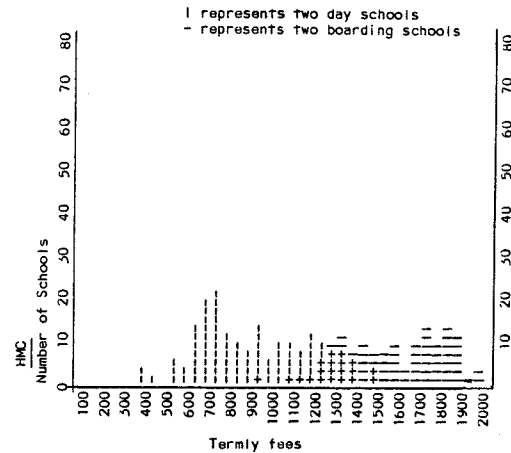
AREA	No. of Schools	BOYS		GIRLS		TOTAL		Boarding Fee		Day Fee	
		Board	Day	Board	Day	Board	Day	Boarding Schools	Day Schools	Boarding Schools	Day Schools
SCOTLAND	18	2313	8751	700	3774	3013	12525	£1452	£ 811	£ 564	£ 564
		-1.4%	-0.5%	+5.7%	+2.1%	+0.2%	+0.2%	+9.1%	+7.9%	+11.0%	+11.0%
THE NORTH	39	4160	22367	349	2038	4509	24405	£1442	£ 908	£ 572	£ 572
		-2.3%	+0.9%	+4.4.2%	+9.6%	+0.2%	+1.6%	+7.7%	+7.3%	+8.1%	+8.1%
WALES	4	833	511	94	37	927	548	£1314	£ 875		
		-1.0%	+6.9%	+22.1%	-21.3%	+1.0%	+4.4%	+8.5%	+7.1%		
W MIDLANDS	24	4525	7752	629	2299	5154	10051	£1649	£1081	£ 631	£ 631
		-1.0%	+2.0%	+11.7%	+7.7%	+0.4%	+3.3%	+9.9%	+10.3%	+7.9%	+7.9%
E MIDLANDS	25	6145	7964	692	418	6837	8382	£1561	£ 937	£ 722	£ 722
		+0.6%	-4.6%	+12.3%	+4.2%	+1.7%	-4.2%	+7.2%	+6.4%	+6.6%	+6.6%
EAST ANGLIA	14	2105	4054	452	1177	2557	5231	£1480	£ 940	£ 785	£ 785
		+0.4%	+0.1%	+11.6%	-2.6%	+2.2%	-0.5%	+8.6%	+9.5%	+12.1%	+12.1%
SOUTH & WEST	30	6756	7214	1220	1453	7976	8667	£1514	£ 929	£ 615	£ 615
		-2.2%	+0.9%	+5.6%	+12.8%	-1.1%	+2.7%	+8.6%	+7.8%	+8.3%	+8.3%
GREATER LONDON	23	1731	14222	41	1017	1772	15239	£1674	£ 972	£ 773	£ 773
		-1.5%	+1.4%	-2.4%	+4.7%	-1.5%	+1.6%	+11.2%	+7.6%	+8.8%	+8.8%
SOUTH EAST	41	11305	7933	1460	1160	12765	9093	£1691	£1140	£ 679	£ 679
		-4.8%	+0.2%	+32.0%	+11.1%	-1.7%	+1.5%	+15.4%	+11.5%	+3.7%	+3.7%
IRELAND	8	704	5474	159	1806	863	7280	£1072	£ 473	£ 384	£ 384
		+1.9%	-1.6%	-6.5%	+2.3%	+0.2%	-0.7%	+3.5%	+1.0%	+15.7%	+15.7%

# HMC

## NUMBERS AND FEES BY AREAS

### SPREAD OF FEES

TABLE 8C - SPREAD OF FEES



# HMC

TABLE 8D

## FULL TIME STAFF

	GRADUATES			NON-GRADUATES		TOTAL
	Math	Sci.	Other	Qual.	Non-Qual.	
MEN	1,226	2,362	6,039	739	73	10,439
WOMEN	147	186	901	333	16	1,583

TABLE 8E

## PART TIME STAFF

	GRADUATES		NON-GRADUATES		TOTAL
	MEN	WOMEN	MEN	WOMEN	
Number	332	610	161	329	1,432
Aggregate number of hours per week.	3,266	6,672	1,372	3,231	14,541

TABLE 8F

## FULL TIME STAFF CHANGES

NUMBER	Coming from	Going to
Independent Schools	357	304
Maintained Schools	290	87
University, Polytechnic or Training Coll.	284	59
Industry, etc.	30	79
Other (Incl. Retirement)	97	419
TOTAL	1,058	948

## STAFFING

TABLE 8G ALL PUPILS AGED 16 OR OVER ON 31.8.85  
ANALYSED BY COURSE OF STUDY

		BOYS		GIRLS	
GCE 'A' level courses	Pupils on Post 'A' level studies		254		87
	Subjects in Maths/ Science group only	1st year	4,858		741
		2nd or later year	5,028		748
	Subjects in both Maths/ Science and other groups	1st year	4,372		950
		2nd or later year	4,292		803
	Other subjects only	1st year	5,985	1,643	
		2nd or later year	5,879	1,505	
	Pupils on GCE O level, CSE or GCSE courses		7,888		750
	All other pupils aged 16 and over on 31.8.85		22		5
	TOTAL		38,578		7,232
'A' level MATHS Pupils included in lines B, C, F and G above whose course includes 'A' level Maths		1st year	6,524		947
		2nd or later year	6,549		862

TABLE 8H

## ALL PUPILS IN FIFTH AND SIXTH YEARS ANALYSED BY COURSE OF STUDY (SCOTLAND) BOYS GIRLS

Fifth year pupils taking a Higher grade course in four or more subjects	886	411
Fifth year pupils taking a Higher grade course in 3 subjects	78	30
Sixth year pupils taking at least one subject in C.S.Y.S.	322	144
Sixth year pupils taking at least one Advanced level subject	180	72
Sixth year pupils taking at least one additional subject on Higher grade	399	164
Sixth year pupils on Post Higher grade non-examinable course	9	7
TOTAL	1,874	828

## COURSES OF STUDY

TABLE 8I

## SOURCES OF ENTRY

		PREVIOUSLY AT SCHOOL		PREVIOUS SCHOOL NOT KNOWN		TOTAL	
		IN U.K.	OVERSEAS	FOREIGN	OR NO PREVIOUS SCHOOL		
AGE ON 31 AUGUST 1985	EX-INDEP. SCHOOL	EX-MAINTAINED SCHOOL	EX-PATRIATE				
	UNDER 8	465	479	16	2	500	1,462
	8-10	967	1,426	84	47	35	2,559
	11-12	3,436	6,116	239	128	246	10,165
	13-14	9,132	1,139	244	439	140	11,094
	15 and over	2,301	1,364	187	942	28	4,822
	TOTAL	16,301	10,524	770	1,558	949	30,102

TABLE 8J

## DESTINATION OF LEAVERS UNDER 15 ON 31.8.1985

		To Indep- endent Schools	To L.E.A. Schools	To Schools Overseas	Unknown	TOTAL
Leaving aged at least 12 on 1.9.85	BOYS	476	616	170	117	1,379
	GIRLS	65	73	28	14	180
Leaving aged less than 12 on 1.9.85	BOYS	230	207	48	47	532
	GIRLS	29	34	13	9	85
TOTAL		800	930	259	187	2,176

**HMC**  
**SOURCES OF ENTRY**  
**DESTINATION OF LEAVERS**

TABLE 8K LEAVERS aged 15 and over on 31.8.85 who left during the year leading up to Census Day

			BOYS	GIRLS	TOTAL
Pupils who left to take Higher Education Courses in U.K. or Overseas	Entrants to Universities, Incl. Deferred Entry	Engineering/Technology	1,591	51	1,642
		Medicine, etc.	831	194	1,025
		Science	1,943	325	2,268
		All other Subjects	5,175	1,157	6,332
	Degree Courses elsewhere incl. B.Ed.	Engineering/Technology	366	9	375
		Science	280	58	338
		All other Subjects	1,360	343	1,703
	H.N.D. T.E.C. B.E.C. Courses	Engineering/Technology	165	9	174
		Science	193	18	211
		All other Subjects	681	199	880
		Other H.E. courses	448	137	585
Pupils who left to continue Secondary Education elsewhere (including re-take exams) having taken any GCE/CSE exams.	To another Indep. School	1,152	198	1,330	
	To a Maintained School	2,410	344	2,754	
	To Overseas	389	42	431	
Other Pupils who left having taken any G.C.E./C.S.E. exams	For further training	962	268	1,230	
	For employment	2,076	215	2,291	
	Others	1,057	175	1,232	
Pupils who left NOT having taken any G.C.E./C.S.E. exams.	To another Indep. School	173	22	195	
	To a Maintained School	169	19	188	
	Others	101	6	107	
		TOTAL	21,502	3,789	25,291

# SHMIS

## NUMBER OF PUPILS

TABLE 9A

NUMBER OF PUPILS IN JANUARY 1986 AND CHANGES SINCE 1985

Figures for 1986 are printed in **BOLD** those for 1985 and % changes are printed below

AGE AT 31 AUG 85	BOYS		GIRLS		TOTAL
	BOARDS	DAY	BOARDS	DAY	
2	0	6	0	2	8
	0	6	0	1	7
				+100.0%	+14.3%
3	0	11	0	4	15
	0	12	0	4	16
		-8.3%			-6.2%
4	0	13	0	2	15
	0	14	0	8	22
		-7.1%		-75.0%	-31.8%
5	0	21	0	9	30
	2	14	1	8	25
	-100.0%	+50.0%	-100.0%	+12.5%	+20.0%
6	3	22	3	8	36
	6	26	3	5	40
	-50.0%	-15.4%		+60.0%	-10.0%
7	16	38	5	18	77
	20	54	7	17	98
	-20.0%	-29.6%	-28.6%	+5.9%	-21.4%
8	35	83	14	28	160
	42	78	18	30	168
	-16.7%	+6.4%	-22.2%	-6.7%	-4.8%
9	76	134	45	50	305
	102	110	45	51	308
	-25.5%	+21.8%		-2.0%	-1.0%
10	351	382	108	125	966
	400	338	122	114	974
	-12.5%	+13.0%	-11.5%	+9.6%	-0.8%
11	584	391	137	126	1,238
	591	435	129	125	1,280
	-1.2%	-10.1%	+6.2%	+0.8%	-3.3%
12	1,142	586	220	181	2,129
	1,146	578	234	175	2,133
	-0.3%	+1.4%	-6.0%	+3.4%	-0.2%
13	1,324	598	303	167	2,392
	1,285	605	274	151	2,315
	+3.0%	-1.2%	+10.6%	+10.6%	+3.3%
14	1,336	567	296	143	2,342
	1,331	549	285	161	2,326
	+0.4%	+3.3%	+3.9%	-11.2%	+0.7%
15	995	329	228	86	1,638
	1,008	291	249	91	1,639
	-1.3%	+13.1%	-8.4%	-5.5%	-0.1%
16	682	216	192	77	1,167
	702	240	157	56	1,155
	-2.8%	-10.0%	+22.3%	+37.5%	+1.0%
17	182	37	47	15	281
	184	26	32	8	250
	-1.1%	+42.3%	+46.9%	+87.5%	+12.4%
18	31	9	4	0	44
	24	3	6	0	33
	+29.2%	+200.0%	-33.3%		+33.3%
19+	6,757	3,443	1,602	1,041	12,843
	6,843	3,379	1,562	1,005	12,789
	-1.3%	+1.9%	+2.6%	+3.6%	+0.4%
TOTAL					

ANALYSIS OF PUPIL NUMBERS AND AVERAGE TERMLY FEES  
(PERCENT CHANGES ARE BASED ON 1985 FIGURES)

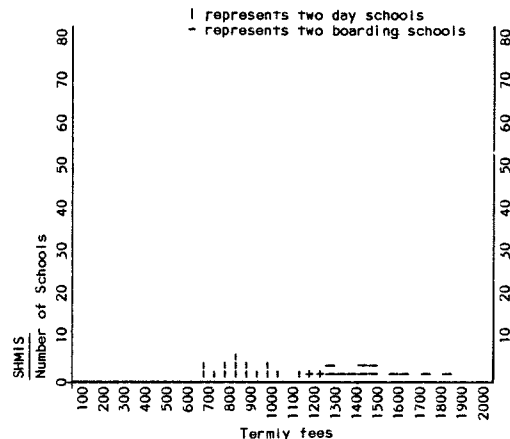
AREA	No. of Schools	BOYS		GIRLS		TOTAL		Boarding Fee	Day Fee Boarding Schools	Day Fee Day Schools
		Board	Day	Board	Day	Board	Day			
SCOTLAND	3	449	74	32	9	481	83	£1323	£ 783	
		+9.2%	+13.8%	+10.3%		+9.3%	+12.2%	+7.4%	+7.5%	
THE NORTH	8	775	1212	504	617	1279	1829	£1363	£ 820	
		-2.8%	-0.6%	+5.2%	-0.5%	+0.2%	-0.5%	+7.6%	+6.9%	
WALES	3	446	174	46	21	492	195	£1543	£ 950	
		+2.5%	-4.4%	-2.1%	+23.5%	+2.1%	-2.0%	+6.8%	+7.0%	
W MIDLANDS	6	761	581	248	174	1009	755	£1346	£ 816	
		-5.0%	+1.9%	+1.6%	+16.8%	-3.4%	+5.0%	+7.7%	+6.8%	
E MIDLANDS	4	820	122	73	8	893	130	£1648	£1038	
		+2.4%	+18.4%	+4.3%	+14.3%	+2.5%	+18.2%	+7.9%	+8.4%	
EAST ANGLIA	1	698				698		£ 925		
		-0.4%				-0.4%		+7.6%		
SOUTH & WEST	6	1051	303	358	69	1409	372	£1451	£ 813	
		-6.7%	-7.1%	+9.1%		-3.1%	-5.8%	+8.2%	+8.7%	
GREATER LONDON	1	160	168	115	43	275	211	£1364	£ 853	
		+0.6%	+1.8%	-20.7%	-6.5%	-9.5%		+7.0%	+7.0%	
SOUTH EAST	9	1597	809	226	100	1823	909	£1505	£ 930	
		-0.9%	+8.0%	+2.7%	+13.6%	-0.5%	+8.6%	+7.3%	+6.5%	

# SHMIS

## NUMBERS AND FEES BY AREAS

### SPREAD OF FEES

TABLE 9C - SPREAD OF FEES



# SHMIS

TABLE 9D FULL TIME STAFF

	GRADUATES			NON-GRADUATES		TOTAL
	Math	Sci.	Other	Qual.	Non-Qual.	
MEN	98	204	497	158	17	974
WOMEN	25	25	126	73	5	250

TABLE 9E PART TIME STAFF

	GRADUATES		NON-GRADUATES		TOTAL
	MEN	WOMEN	MEN	WOMEN	
Number	40	78	23	62	203
Aggregate number of hours per week.	557	759	166	595	1,877

TABLE 9F FULL TIME STAFF CHANGES

NUMBER	Coming from	Going to
Independent Schools	46	51
Maintained Schools	34	9
University, Polytechnic or Training Coll.	51	5
Industry, etc.	4	10
Other (Incl. Retirement)	20	59
TOTAL	155	114

## STAFFING

TABLE 9G ALL PUPILS AGED 16 OR OVER ON 31.8.85  
ANALYSED BY COURSE OF STUDY

Pupils on Post 'A' level studies			5	0
GCE 'A' level courses	Subjects in Maths/ Science group only	1st year	286	43
		2nd or later year	260	40
	Subjects in both Maths/ Science and other groups	1st year	242	74
		2nd or later year	237	89
	Other subjects only	1st year	334	168
		2nd or later year	349	139
Pupils on GCE O level, CSE or GCSE courses			881	227
All other pupils aged 16 and over on 31.8.85			20	3
TOTAL			2,614	783
'A' level MATHS				
Pupils included in lines B, C, F and G above whose course includes 'A' level Maths				
		1st year	355	64
		2nd or later year	281	61

TABLE 9H ALL PUPILS IN FIFTH AND SIXTH YEARS  
ANALYSED BY COURSE OF STUDY  
(SCOTLAND)

	BOYS	GIRLS
Fifth year pupils taking a Higher grade course in four or more subjects	34	8
Fifth year pupils taking a Higher grade course in 3 subjects	11	0
Sixth year pupils taking at least one subject in C.S.Y.S.	0	0
Sixth year pupils taking at least one Advanced level subject	16	0
Sixth year pupils taking at least one additional subject on Higher grade	44	2
Sixth year pupils on Post Higher grade non-examinable course	0	0
TOTAL	105	10

## COURSES OF STUDY

# SOURCES OF ENTRY DESTINATION OF LEAVERS

TABLE 9I SOURCES OF ENTRY

		JOURNAL OF ENTRY					TOTAL
		PREVIOUSLY AT SCHOOL		PREVIOUS SCHOOL OR FOREIGN	NO PREVIOUS SCHOOL NOT KNOWN		
		IN U.K.	OVERSEAS				
AGE ON 31 AUGUST 1985	EX-INDEP. SCHOOL	EX-MAINTAINED SCHOOL	EX-PATRIATE				
	UNDER 8	15	16	6	2	15	54
	8-10	51	145	36	13	0	245
	11-12	257	676	59	72	6	1,070
	13-14	867	307	76	149	8	1,407
	15 and over	119	125	41	200	6	491
TOTAL		1,309	1,269	218	436	35	3,267

TABLE 9J DESTINATION OF LEAVERS UNDER 15 ON 31.8.1985

		To Independent Schools	To L.E.A. Schools	To Schools Overseas	Unknown	TOTAL
Leaving aged at least 12 on 1.9.85	BOYS	72	105	43	15	235
	GIRLS	14	37	10	6	67
Leaving aged less than 12 on 1.9.85	BOYS	9	19	5	8	39
	GIRLS	9	8	4	0	21
TOTAL		104	169	60	29	362

TABLE 9K LEAVERS aged 15 and over on 31.8.85 who left during the year leading up to Census Day

		BOYS	GIRLS	TOTAL	
Pupils who left to take Higher Education Courses in U.K. or Overseas	Entrants to Universities, Incl. Deferred Entry	Engineering/Technology	63	2	65
		Medicine, etc.	13	3	16
		Science	81	12	93
		All other Subjects	119	37	156
	Degree Courses elsewhere incl. B.Ed.	Engineering/Technology	30	1	31
		Science	20	4	24
		All other Subjects	104	30	134
	H.N.D. T.E.C. B.E.C. Courses	Engineering/Technology	30	1	31
		Science	26	2	28
		All other Subjects	143	40	183
	Other H.E. courses	64	32	96	
Pupils who left to continue Secondary Education elsewhere (including re-take exams) having taken any GCE/CSE exams.	To another Indep. School	126	51	177	
	To a Maintained School	316	112	428	
	To Overseas	93	39	132	
Other Pupils who left having taken any G.C.E./C.S.E. exams	For further training	197	52	249	
	For employment	327	40	367	
	Others	115	23	138	
Pupils who left NOT having taken any G.C.E./C.S.E. exams.	To another Indep. School	30	4	34	
	To a Maintained School	31	9	40	
	Others	29	3	32	
	TOTAL	1,957	497	2,454	

# GBA NUMBER OF PUPILS

TABLE 10A

NUMBER OF PUPILS IN JANUARY 1986 AND CHANGES SINCE 1985

Figures for 1986 are printed in **BOLD** those for 1985 and % changes are printed below

AGE AT 31 AUG 85	BOYS		GIRLS		TOTAL
	BOARDERS	DAY	BOARDERS	DAY	
2	0	7	0	5	12
	0	4	0	1	5
		+75.0%		+400.0%	+140.0%
3	0	32	0	24	56
	0	24	0	16	40
		+33.3%		+50.0%	+40.0%
4	0	57	0	27	84
	0	58	0	41	99
		-1.7%		-34.1%	-15.2%
5	0	70	0	24	94
	1	93	0	28	122
	-100.0%	-24.7%		-14.3%	-23.0%
6	0	64	0	23	87
	0	82	0	47	129
		-22.0%		-51.1%	-32.6%
7	2	125	1	34	162
	0	120	0	38	158
		+4.2%		-10.5%	+2.5%
8	5	150	0	28	183
	1	113	0	45	159
	+400.0%	+32.7%		-37.8%	+15.1%
9	8	164	4	37	213
	4	195	4	30	233
	+100.0%	-15.3%		+23.3%	-8.6%
10	10	228	10	43	291
	18	203	13	37	271
	-44.4%	+12.3%		+16.2%	+7.4%
11	90	565	34	79	768
	72	585	17	68	742
	+25.0%	-3.4%		+16.2%	+3.5%
12	108	645	34	89	876
	102	609	55	71	837
	+5.9%	+5.5%		+25.4%	+4.7%
13	268	720	115	139	1,242
	272	768	106	142	1,288
	-1.5%	-6.2%		+8.5%	-2.1%
14	315	804	107	145	1,371
	270	715	102	141	1,228
	+16.7%	+12.4%		+4.9%	+11.6%
15	288	691	113	153	1,245
	306	664	120	112	1,202
	-5.9%	+4.1%		+36.6%	+3.6%
16	263	444	139	115	961
	261	439	117	131	948
	+0.8%	+1.1%		-12.2%	+1.4%
17	204	324	97	107	732
	216	282	108	77	683
	-5.6%	+14.4%		+39.0%	+7.2%
18	55	36	18	13	122
	63	42	13	10	128
	-12.7%	-14.3%		+30.0%	-4.7%
19+	15	8	0	2	25
	13	4	1	1	19
	+15.4%	+100.0%		+100.0%	+31.6%
TOTAL	1,631	5,134	672	1,087	8,524
	1,599	5,000	656	1,036	8,291
	+2.0%	+2.7%		+4.9%	+2.8%



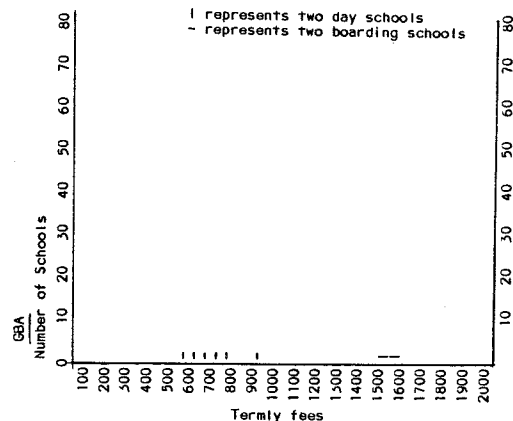
TABLE 10B

ANALYSIS OF PUPIL NUMBERS AND AVERAGE TERMLY FEES  
(PERCENT CHANGES ARE BASED ON 1985 FIGURES)

AREA	No. of Schools	BOYS		GIRLS		TOTAL		Boarding Fee	Day Fee	
		Board	Day	Board	Day	Board	Day		Boarding Schools	Day Schools
SCOTLAND	1	46	171	31	209	77	380	£1500	£ 610	
		+15.0%	+98.8%	+29.2%	+90.0%	+20.3%	+93.9%	+7.5%	+9.9%	
THE NORTH	4	66	2284	33	111	99	2395	£ 874	£ 612	£ 522
		-4.3%	+2.1%	+13.8%	+26.1%	+1.0%	+3.0%	-15.9%	+6.4%	+12.4%
WALES	1		91		85		176			£ 670
			-59.9%		-54.8%		-57.6%			+14.5%
E MIDLANDS	2	281	214	217	109	498	323	£1576	£ 862	
		+6.4%	+10.3%	-2.7%	-16.2%	+2.3%	-0.3%	+7.3%	+7.6%	
EAST ANGLIA	4	412	742	78	222	490	964	£1309	£ 702	£ 748
		+6.7%	+3.9%	+5.4%	+4.2%	+6.5%	+4.0%	+6.9%	+6.8%	+33.8%
SOUTH & WEST	2	616	267	313	102	929	369			£ 644
		-1.8%	+0.8%	+2.3%	+4.1%	-0.4%	+1.7%	-100.0%	-100.0%	+5.9%
GREATER LONDON	1		226		228		454			£ 890
			+0.9%		+12.3%		+6.3%			+5.7%
SOUTH EAST	3	210	1139	21	21	210	1160	£1286	£ 680	£ 665
		-1.4%	+8.2%		+250.0%	-1.4%	+9.5%	+18.6%	+20.4%	+16.7%

GBA  
NUMBERS AND FEES BY AREAS  
SPREAD OF FEES

TABLE 10C - SPREAD OF FEES



# GBA

TABLE 10D FULL TIME STAFF

	GRADUATES			NON-GRADUATES		TOTAL
	Math	Sci.	Other	Qual.	Non-Qual.	
MEN	52	112	276	68	8	516
WOMEN	15	21	96	51	9	192

TABLE 10E PART TIME STAFF

	GRADUATES		NON-GRADUATES		TOTAL
	MEN	WOMEN	MEN	WOMEN	
Number	30	44	22	49	145
Aggregate number of hours per week.	369	407	229	525	1,530

TABLE 10F FULL TIME STAFF CHANGES

NUMBER	Coming from	Going to
Independent Schools	20	19
Maintained Schools	25	14
University, Polytechnic or Training Coll.	29	3
Industry, etc.	3	1
Other (Incl. Retirement)	8	37
TOTAL	85	74

## STAFFING

TABLE 10G ALL PUPILS AGED 16 OR OVER ON 31.8.85 ANALYSED BY COURSE OF STUDY

			BOYS	GIRLS
Pupils on Post 'A' level studies			0	0
GCE 'A' level courses	Subjects in Maths/ Science group only	1st year	195	39
		2nd or later year	210	45
	Subjects in both Maths/ Science and other groups	1st year	184	74
		2nd or later year	164	37
	Other subjects only	1st year	190	111
		2nd or later year	173	108
Pupils on GCE O level, CSE or GCSE courses			349	69
All other pupils aged 16 and over on 31.8.85			2	10
TOTAL			1,467	493
'A' level MATHS Pupils included in lines B, C, -- F and G above whose course includes 'A' level Maths			1st year	260
			2nd or later year	251
			74	58

## COURSES OF STUDY

TABLE 10H ALL PUPILS IN FIFTH AND SIXTH YEARS ANALYSED BY COURSE OF STUDY (SCOTLAND)  
BOYS GIRLS

Fifth year pupils taking a Higher grade course in four or more subjects	22	21
Fifth year pupils taking a Higher grade course in 3 subjects	2	4
Sixth year pupils taking at least one subject in C.S.Y.S.	0	0
Sixth year pupils taking at least one Advanced level subject	6	11
Sixth year pupils taking at least one additional subject on Higher grade	5	8
Sixth year pupils on Post Higher grade non-examinable course	1	0
TOTAL	36	44

# SOURCES OF ENTRY DESTINATION OF LEAVERS

TABLE 10I SOURCES OF ENTRY

		PREVIOUSLY AT SCHOOL		PREVIOUS SCHOOL		TOTAL	
		IN U.K.		OVERSEAS			
		EX-INDEP. SCHOOL	EX-MAINTAINED SCHOOL	EX-PATRIATE	FOREIGN		
AGE ON 31 AUGUST 1985	UNDER 8	26	54	2	6	90	178
	8-10	39	124	13	5	2	183
	11-12	151	425	19	20	2	617
	13-14	322	156	28	54	3	543
	15 and over	120	97	18	68	18	321
	TOTAL	658	836	80	153	115	1,842

TABLE 10K LEAVERS aged 15 and over on 31.8.85 who left during the year leading up to Census Day

			BOYS	GIRLS	TOTAL
Pupils who left to take Higher Education Courses in U.K. or Overseas	Entrants to Universities, Incl. Deferred Entry	Engineering/Technology	55	8	43
		Medicine, etc.	13	4	17
		Science	52	21	73
		All other Subjects	75	58	133
	Degree Courses elsewhere incl. B.Ed.	Engineering/Technology	8	1	9
		Science	9	3	12
		All other Subjects	47	26	73
	H.N.D. T.E.C. B.E.C. Courses	Engineering/Technology	6	0	6
		Science	5	3	8
		All other Subjects	31	18	49
		Other H.E. courses	48	16	64
Pupils who left to continue Secondary Education elsewhere (including re-take exams) having taken any GCE/CSE exams.	To another Indep. School	41	40	81	
	To a Maintained School	201	61	262	
	To Overseas	39	12	51	
Other Pupils who left having taken any G.C.E./C.S.E. exams	For further training	65	54	119	
	For employment	109	49	158	
	Others	80	23	103	
Pupils who left NOT having taken any G.C.E./C.S.E. exams.	To another Indep. School	17	8	25	
	To a Maintained School	5	1	6	
	Others	15	9	24	
		TOTAL	901	415	1,316

TABLE 10J DESTINATION OF LEAVERS UNDER 15 ON 31.8.1985

		To Independent Schools	To L.E.A. Schools	To Schools Overseas	Unknown	TOTAL
Leaving aged at least 12 on 1.9.85	BOYS	31	58	13	16	118
	GIRLS	14	19	11	4	48
Leaving aged less than 12 on 1.9.85	BOYS	29	17	9	11	66
	GIRLS	14	20	11	2	47
TOTAL		88	114	44	33	279

# GSA/GBGSA NUMBER OF PUPILS

TABLE 11A

## NUMBER OF PUPILS IN JANUARY 1986 AND CHANGES SINCE 1985

Figures for 1986 are printed in **BOLD** those for 1985 and % changes are printed below

AGE AT 31 AUG 85	BOYS		GIRLS		TOTAL
	BOARDERS	DAY	BOARDERS	DAY	
2	0	46	0	119	165
	0	60	0	100	160
		-23.3%		+19.0%	+3.1%
3	0	199	0	444	643
	0	161	0	460	621
		+23.6%		-3.5%	+3.5%
4	0	321	1	1,297	1,619
	0	319	0	1,197	1,516
		+0.6%		+8.4%	+6.8%
5	0	274	0	1,766	2,040
	0	249	1	1,679	1,929
		+10.0%		+5.2%	+5.8%
6	0	223	11	1,908	2,142
	2	225	0	1,860	2,087
	-100.0%	-0.9%		+2.6%	+2.6%
7	2	149	43	2,781	2,975
	0	127	35	2,649	2,811
		+17.3%		+22.9%	+5.8%
8	1	16	101	3,284	3,402
	0	14	115	3,286	3,415
		+14.3%		-12.2%	-0.4%
9	0	6	251	3,821	4,078
	2	11	313	3,824	4,150
	-100.0%	-45.5%		-19.8%	-0.1%
10	2	12	653	4,611	5,278
	1	1	709	4,704	5,415
	+100.0%	+100.0%		-7.9%	-2.0%
11	0	11	2,191	9,765	11,967
	0	0	2,285	9,724	12,009
		0	-4.1%	+0.4%	-0.3%
12	0	3	2,944	10,028	12,975
	0	0	3,193	9,951	13,144
		0	-7.8%	+0.8%	-1.3%
13	5	20	3,623	10,235	13,883
	6	22	3,832	10,361	14,221
	-16.7%	-9.1%		-1.2%	-2.4%
14	7	24	4,048	10,432	14,510
	6	27	3,747	9,842	13,623
	-14.3%	-11.1%		+8.0%	+6.5%
15	7	26	3,852	9,626	13,511
	6	12	3,932	9,229	13,179
	+16.7%	+116.7%		+4.3%	+2.5%
16	4	16	3,088	6,289	9,397
	3	7	3,112	6,242	9,364
	+33.3%	+128.6%		-0.8%	+0.4%
17	3	4	2,305	5,129	7,441
	2	19	2,260	4,928	7,209
	+50.0%	-78.9%		+4.1%	+3.2%
18	0	5	384	289	678
	2	1	388	215	606
	-100.0%	+400.0%		-1.0%	+11.9%
19+	0	0	80	10	90
	1	0	64	14	79
	-100.0%	0		-28.6%	+13.9%
TOTAL	30	1,355	23,575	81,834	106,794
	32	1,255	23,986	80,265	105,538
	-6.2%	+8.0%		+2.0%	+1.2%

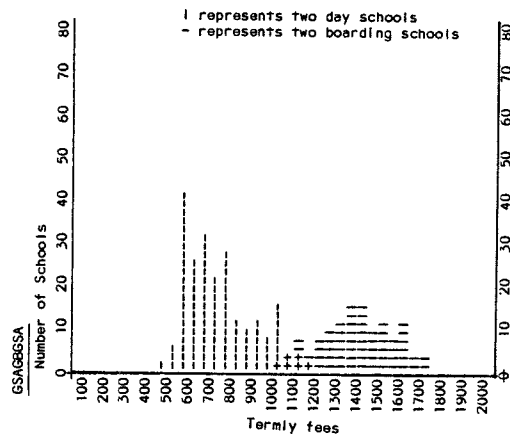
TABLE 11B

ANALYSIS OF PUPIL NUMBERS AND AVERAGE TERMLY FEES  
(PERCENT CHANGES ARE BASED ON 1985 FIGURES)

AREA	No. of Schools	BOYS		GIRLS		TOTAL		Boarding Fee	Day Fee	
		Board	Day	Board	Day	Board	Day		Boarding Schools	Day Schools
SCOTLAND	11	38	851	4575	851	4613	4613	£1301	£ 619	£ 573
THE NORTH	39	+72.7%	-11.6%	+0.1%	-11.6%	+0.5%	+0.5%	+11.5%	+8.7%	+9.6%
		533	2241	18373	2241	18906	18906	£1324	£ 798	£ 557
WALES	3	-1.3%	-2.1%	+0.9%	-2.1%	+0.8%	+0.8%	+8.0%	+8.1%	+7.9%
		14	432	1115	432	1129	1129	£1208	£ 699	
W MIDLANDS	23	-7.5%	+5.4%	-7.5%	-7.5%	+6.7%	+6.7%	+7.3%	+9.8%	
		89	2828	6681	2828	6770	6770	£1351	£ 831	£ 593
E MIDLANDS	28	+6.0%	-0.1%	+0.1%	-0.1%	+0.1%	+0.1%	+8.3%	+8.3%	+10.2%
		88	3666	10449	3666	10537	10537	£1337	£ 732	£ 577
EAST ANGLIA	13	+3.5%	+1.8%	+2.6%	+1.8%	+2.6%	+2.6%	+9.0%	+7.8%	+6.7%
		87	1418	3992	1418	4079	4079	£1384	£ 868	£ 543
SOUTH & WEST	29	+2.4%	-1.4%	+2.6%	-1.4%	+2.6%	+2.6%	+7.8%	+9.3%	+7.3%
		3	3878	6841	3881	6978	6978	£1291	£ 741	£ 490
GREATER LONDON	32	-25.0%	-6.4%	+4.0%	-6.4%	+4.3%	+4.3%	+8.0%	+9.0%	+9.1%
		5	409	17006	409	17011	17011	£1219	£ 672	£ 628
SOUTH EAST	63	-16.7%	-3.8%	+1.7%	-3.8%	+1.7%	+1.7%	+2.9%	-0.8%	+8.5%
		27	364	7852	12802	7879	13166	£1386	£ 807	£ 612
		-3.6%	+0.2%	+3.4%	+0.2%	+3.6%	+3.6%	+9.1%	+8.5%	+8.3%

GSA/GBGSA  
NUMBERS OF FEES BY AREAS  
SPREAD OF FEES

TABLE 11C - SPREAD OF FEES



# GSA/GBGSA

TABLE 11D FULL TIME STAFF

	GRADUATES			NON-GRADUATES		TOTAL
	Math	Sci.	Other	Qual.	Non-Qual.	
MEN	105	260	460	60	6	891
WOMEN	590	825	3,776	1,511	45	6,747

TABLE 11E PART TIME STAFF

	GRADUATES		NON-GRADUATES		TOTAL
	MEN	WOMEN	MEN	WOMEN	
Number	209	2,095	41	983	3,328
Aggregate number of hours per week.	2,416	24,702	1,274	10,908	39,300

TABLE 11F FULL TIME STAFF CHANGES

NUMBER	Coming from	Going to
Independent Schools	291	196
Maintained Schools	400	102
University, Polytechnic or Training Coll.	174	35
Industry, etc.	9	50
Other (Incl. Retirement)	163	593
TOTAL	1,037	976

## STAFFING

TABLE 11G ALL PUPILS AGED 16 OR OVER ON 31.8.85  
ANALYSED BY COURSE OF STUDY

			BOYS	GIRLS
Pupils on Post 'A' level studies			0	5
GCE 'A' level courses	Subjects in Maths/ Science group only	1st year	10	1,750
		2nd or later year	8	1,812
	Subjects in both Maths/ Science and other groups	1st year	6	2,368
		2nd or later year	8	12,132
	Other subjects only	1st year	1	3,786
		2nd or later year	5	3,644
Pupils on GCE O level, CSE or GCSE courses			41	3,587
All other pupils aged 16 and over on 31.8.85			2	395
TOTAL			81	29,479
'A' level MATHS Pupils included in lines B, C, F and G above whose course includes 'A' level Maths				
		1st year	4	2,641
		2nd or later year	8	2,372

TABLE 11H ALL PUPILS IN FIFTH AND SIXTH YEARS  
ANALYSED BY COURSE OF STUDY  
(SCOTLAND)  
BOYS GIRLS

Fifth year pupils taking a Higher grade course in four or more subjects	0	384
Fifth year pupils taking a Higher grade course in 3 subjects	0	90
Sixth year pupils taking at least one subject in C.S.Y.S.	0	140
Sixth year pupils taking at least one Advanced level subject	0	95
Sixth year pupils taking at least one additional subject on Higher grade	0	200
Sixth year pupils on Post Higher grade non-examinable course	0	0
TOTAL	0	909

## COURSES OF STUDY

# SOURCES OF ENTRY DESTINATION OF LEAVERS

TABLE 11I SOURCES OF ENTRY

		SCHOOL OF ENTRY		PREVIOUS SCHOOL OR NO PREVIOUS SCHOOL NOT KNOWN	TOTAL		
		PREVIOUSLY AT SCHOOL					
		IN U.K.	OVERSEAS				
AGE ON 31 AUGUST 1985	EX-INDEP. SCHOOL	EX-MAINTAINED SCHOOL	EX-ATRIATE	FOREIGN			
	UNDER 8	916	771	27	49	1,794	3,557
	8-10	1,152	1,390	138	105	12	2,797
	11-12	4,149	3,975	290	269	55	8,738
	13-14	962	780	169	385	16	2,312
	15 and over	737	507	102	650	12	2,008
TOTAL	7,916	7,423	726	1,458	1,889	19,412	

TABLE 11J DESTINATION OF LEAVERS UNDER 15 ON 31.8.1985

		To Independent Schools	To L.E.A. Schools	To Schools Overseas	Unknown	TOTAL
Leaving aged at least 12 on 1.9.85	BOYS	4	7	1	5	17
	GIRLS	859	714	280	161	2,014
Leaving aged less than 12 on 1.9.85	BOYS	222	75	15	12	324
	GIRLS	844	376	155	158	1,533
TOTAL		1,929	1,172	451	336	3,888

TABLE 11K LEAVERS aged 15 and over on 31.8.85 who left during the year leading up to Census Day

		BOYS	GIRLS	TOTAL
Pupils who left to take Higher Education Courses in U.K. or Overseas	Entrants to Universities, Incl. Deferred Entry			
	Engineering/Technology	0	170	170
	Medicine, etc.	1	384	385
	Science	3	772	775
	All other Subjects	4	2,497	2,501
	Degree Courses elsewhere incl. B.Ed.			
	Engineering/Technology	1	32	33
	Science	1	117	118
	All other Subjects	2	999	1,001
	H.N.D. T.E.C. B.E.C. Courses			
	Engineering/Technology	0	13	13
	Science	0	55	55
	All other Subjects	1	519	520
	Other H.E. courses	1	795	796
Pupils who left to continue Secondary Education elsewhere (including re-take exams) having taken any GCE/CSE exams.	To another Indep. School	1	1,821	1,822
	To a Maintained School	7	2,594	2,601
	To Overseas	0	381	381
	For further training	0	1,570	1,570
Other Pupils who left having taken any G.C.E./C.S.E. exams	For employment	4	764	768
	Others	0	550	550
Pupils who left NOT having taken any G.C.E./C.S.E. exams.	To another Indep. School	1	66	67
	To a Maintained School	0	72	72
	Others	1	94	95
TOTAL		28	14,265	14,293

# IAPS

## NUMBER OF PUPILS

TABLE 12A

NUMBER OF PUPILS IN JANUARY 1986 AND CHANGES SINCE 1985

Figures for 1986 are printed in **BOLD** those for 1985 and % changes are printed below

AGE AT AUG 85	BOYS		GIRLS		TOTAL
	BOARDERS	DAY	BOARDERS	DAY	
31	0	343	0	355	698
32	0	282	0	302	584
33	5	+21.6%	0	+17.5%	+19.5%
34	0	1,534	0	1,329	2,868
35	0	1,435	0	1,274	2,709
36	9	+6.9%	2	+4.3%	+5.9%
37	1	3,378	2	2,408	5,797
38	34	3,161	1	2,332	5,495
39	+800.0%	+6.9%	+100.0%	+3.3%	+5.5%
40	8	3,862	40	2,527	6,463
41	+325.0%	3,698	7	2,421	6,134
42	84	+4.4%	+471.4%	+4.4%	+5.4%
43	80	4,478	69	2,624	7,255
44	+5.0%	4,179	44	2,467	6,770
45	700	+7.2%	+56.8%	+6.4%	+7.2%
46	736	5,899	220	2,832	9,651
47	-4.9%	5,368	209	2,733	9,266
48	-2.4%	+5.6%	+5.3%	+3.6%	+4.2%
49	2,060	6,753	528	3,034	12,375
50	2,111	6,632	500	2,702	11,945
51	-2.4%	+1.8%	+5.6%	+12.3%	+3.6%
52	2,895	7,113	853	2,912	13,773
53	3,059	7,318	782	2,987	14,146
54	-5.4%	-2.8%	+9.1%	-2.5%	-2.6%
55	3,841	7,317	1,029	2,872	15,059
56	3,997	7,356	1,000	2,750	15,103
57	-3.2%	-0.5%	+2.9%	+4.4%	-0.3%
58	4,598	6,188	1,012	1,054	12,852
59	4,732	6,015	774	1,009	12,530
60	-2.8%	+2.9%	+30.7%	+4.5%	+2.6%
61	4,847	4,718	642	513	10,720
62	5,124	4,779	634	439	10,976
63	-5.4%	-1.3%	+1.3%	+16.9%	-2.3%
64	740	576	87	84	1,487
65	581	544	71	66	1,262
66	+27.4%	+5.9%	+22.5%	+27.3%	+17.8%
67	17	197	25	42	281
68	13	137	15	38	203
69	+30.8%	+43.8%	+66.7%	+10.5%	+38.4%
70	2	126	18	41	187
71	3	100	19	33	155
72	-33.3%	+26.0%	-5.3%	+24.2%	+20.6%
73	0	32	3	5	40
74	0	31	1	1	33
75	0	+3.2%	+200.0%	+400.0%	+21.2%
76	0	8	0	0	8
77	0	4	0	0	4
78	0	+100.0%	0	0	+100.0%
79	0	0	0	0	0
80	0	1	0	0	1
81	0	-100.0%	0	0	-100.0%
82	0	0	0	0	0
83	0	0	0	0	0
84	19,832	52,522	4,528	22,632	99,514
85	20,445	51,266	4,057	21,554	97,322
86	-3.0%	+2.4%	+11.6%	+5.0%	+2.3%
TOTAL					



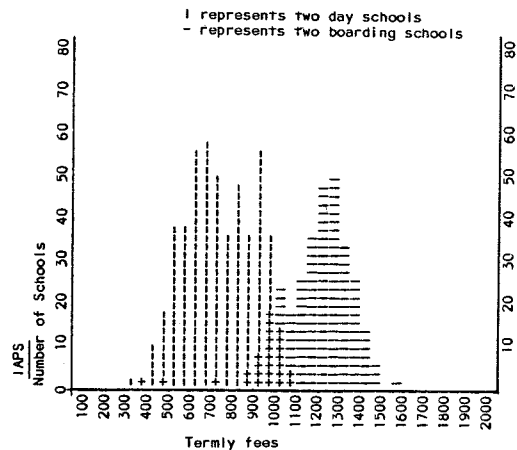
TABLE 12B

ANALYSIS OF PUPIL NUMBERS AND AVERAGE TERMLY FEES  
(PERCENT CHANGES ARE BASED ON 1985 FIGURES)

AREA	No. of Schools	BOYS		GIRLS		TOTAL		Boarding Fee	Day Fee Boarding Schools	Day Fee Day Schools
		Board	Day	Board	Day	Board	Day			
SCOTLAND	20	719	1655	285	723	1004	2378	£1254	£ 739	£ 605
		-2.7%	+4.0%	+13.5%	+4.3%	+1.4%	+4.1%	+9.3%	+9.6%	+13.3%
THE NORTH	56	1810	4853	433	2168	2243	7021	£1082	£ 700	£ 506
		-0.6%	+2.8%	+13.4%	+13.7%	+1.8%	+5.9%	+7.1%	+6.8%	+6.8%
WALES	9	328	879	78	423	406	1302	£1007	£ 671	£ 526
		+5.1%	+3.9%	+13.0%	+8.5%	+6.6%	+5.3%	+9.6%	+8.1%	+11.1%
W MIDLANDS	59	2527	4874	563	2519	3090	7393	£1106	£ 774	£ 631
		-2.4%	+1.6%	+3.9%	+0.8%	-1.3%	+1.3%	+8.6%	+7.8%	+9.7%
E MIDLANDS	72	2268	7604	442	3830	2710	11434	£1138	£ 755	£ 564
		-1.9%	-0.8%	+4.5%	+6.3%	-0.9%	+1.4%	+8.9%	+6.2%	+9.3%
EAST ANGLIA	36	1231	3901	285	1628	1516	5529	£1154	£ 793	£ 480
		-2.8%	+2.6%	+16.8%	+4.4%	+0.4%	+3.1%	+9.1%	+9.9%	+8.9%
SOUTH & WEST	58	3020	4417	903	2032	3923	6449	£1354	£ 753	£ 503
		-0.3%	+4.2%	+8.1%	+5.6%	+1.6%	+4.7%	+25.3%	+8.2%	+9.5%
GREATER LONDON	51	359	9008	2195	359	11203	11203	£ 953	£ 785	£ 645
		-46.7%	+5.3%	+0.5%	+0.5%	-46.7%	+4.3%	+8.6%	+8.2%	+8.5%
SOUTH EAST	168	7452	15187	1483	7066	8935	22253	£1168	£ 798	£ 558
		-1.4%	+2.2%	+18.6%	+5.0%	+1.4%	+3.1%	+8.0%	+8.6%	+9.1%
IRELAND	5	203	361	78	72	281	433	£1136	£ 593	£ 474
		-10.6%	-10.9%	+2.6%	-6.5%	-7.3%	-10.2%	+10.7%	+6.2%	

IAPS  
NUMBERS OF FEES BY AREAS  
SPREAD OF FEES

TABLE 12C - SPREAD OF FEES



# IAPS

TABLE 12D FULL TIME STAFF

	GRADUATES			NON-GRADUATES		TOTAL
	Math	Sci.	Other	Qual.	Non-Qual.	
MEN	220	327	2,095	1,053	277	5,972
WOMEN	64	109	1,101	1,971	267	3,512

TABLE 12E PART TIME STAFF

	GRADUATES		NON-GRADUATES		TOTAL
	MEN	WOMEN	MEN	WOMEN	
Number	237	653	314	1,389	2,593
Aggregate number of hours per week.	2,072	7,786	2,829	16,466	29,153

## STAFFING

TABLE 12F

FULL TIME STAFF CHANGES

NUMBER	Coming from	Going to
Independent Schools	385	252
Maintained Schools	242	95
University, Polytechnic or Training Coll.	167	89
Industry, etc.	41	52
Other (Incl. Retirement)	195	422
TOTAL	1,050	910

TABLE 121

## SOURCES OF ENTRY

		PREVIOUSLY AT SCHOOL		PREVIOUS SCHOOL OR NO PREVIOUS SCHOOL	FOREIGN	NO PREVIOUS SCHOOL NOT KNOWN	TOTAL
		IN U.K.	OVERSEAS				
AGE ON 31 AUGUST 1985	UNDER 8	3,293	2,680	239	198	6,525	12,935
	8-10	3,295	3,981	774	403	231	8,684
	11-12	965	1,347	249	284	45	2,890
	13-14	78	81	14	68	1	242
	15 and over	12	10	1	3	0	26
	TOTAL	7,643	8,099	1,277	956	6,802	24,777

# IAPS

## SOURCES OF ENTRY

### DESTINATION OF LEAVERS

TABLE 12J

## DESTINATION OF LEAVERS UNDER 15 ON 31.8.1985

		To Independent Schools	To L.E.A. Schools	To Schools Overseas	Unknown	TOTAL
Leaving aged at least 12 on 1.9.85	BOYS	9,745	710	211	65	10,731
	GIRLS	1,526	200	48	14	1,788
Leaving aged less than 12 on 1.9.85	BOYS	3,489	1,112	409	264	5,274
	GIRLS	2,633	662	243	134	3,672
TOTAL		17,393	2,684	911	477	21,465

# ISAI

## NUMBER OF PUPILS

TABLE 13A

### NUMBER OF PUPILS IN JANUARY 1986 AND CHANGES SINCE 1985

Figures for 1986 are printed in **BOLD** those for 1985 and % changes are printed below

AGE AT AUG 85	BOYS		GIRLS		TOTAL
	BOARDERS	DAY	BOARDERS	DAY	
2	0	296	0	306	602
	0	223	0	262	485
		+32.7%		+16.8%	+24.1%
3	0	990	0	967	1,957
	0	870	0	914	1,784
		+13.8%		+5.8%	+9.7%
4	0	1,536	0	1,508	3,044
	0	1,510	0	1,432	2,942
		+1.7%		+5.3%	+3.5%
5	5	1,580	1	1,521	3,107
	6	1,658	1	1,428	3,093
	-16.7%	-4.7%		+6.5%	+0.5%
6	4	1,584	13	1,518	3,119
	5	1,468	7	1,342	2,822
	-20.0%	+7.9%	+85.7%	+13.1%	+10.5%
7	14	1,372	15	1,382	2,783
	17	1,328	15	1,373	2,733
	-17.6%	+3.3%		+0.7%	+1.8%
8	39	1,227	39	1,439	2,744
	28	1,239	54	1,315	2,636
	+39.3%	-1.0%	-27.8%	+9.4%	+4.1%
9	50	1,246	81	1,417	2,794
	55	1,311	80	1,415	2,861
	-9.1%	-5.0%		+0.1%	-2.3%
10	101	1,341	125	1,497	3,064
	100	1,357	148	1,477	3,082
	+1.0%	-1.2%		+1.4%	-0.6%
11	176	1,268	215	1,602	3,261
	219	1,275	227	1,609	3,330
	-19.8%	-0.5%	-5.3%	-0.4%	-2.1%
12	271	1,324	260	1,635	3,490
	257	1,390	293	1,709	3,649
	+5.4%	-4.7%	-11.3%	-4.3%	-4.4%
13	333	1,483	295	1,747	3,858
	388	1,528	318	1,743	3,977
	-14.2%	-2.9%	-7.2%	+0.2%	-3.0%
14	401	1,573	318	1,726	4,018
	397	1,489	316	1,654	3,856
	+1.0%	+5.6%	+0.6%	+4.4%	+4.2%
15	376	1,474	316	1,602	3,768
	429	1,464	314	1,670	3,877
	-12.4%	+0.7%	+0.6%	-4.1%	-2.8%
16	221	554	110	506	1,391
	229	534	131	519	1,413
	-3.3%	+3.7%	-16.0%	-2.5%	-1.6%
17	111	246	51	315	723
	100	288	62	301	751
	+11.0%	-14.6%	-17.7%	+4.7%	-3.7%
18	38	80	6	59	183
	43	82	10	90	225
	-11.6%	-2.4%	-40.0%	-34.4%	-18.7%
19+	10	39	4	47	100
	12	40	3	39	94
	-16.7%	-2.5%	+33.3%	+20.5%	+6.4%
TOTAL	2,150	19,213	1,849	20,794	44,006
	2,285	19,054	1,979	20,292	43,610
	-5.9%	+0.8%	-6.6%	+2.5%	+0.9%

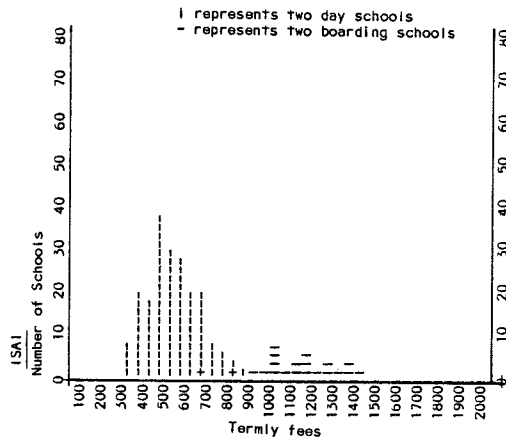
TABLE 13B

ANALYSIS OF PUPIL NUMBERS AND AVERAGE TERMLY FEES  
(PERCENT CHANGES ARE BASED ON 1985 FIGURES)

AREA	No. of Schools	BOYS		GIRLS		TOTAL		Boarding Fee	Day Fee	Day Fee
		Board	Day	Board	Day	Board	Day			
THE NORTH	37	39	3705	348	4466	387	8171	£1359	£693	£406
		-51.3%	+1.1%	-15.9%	+2.2%	-21.7%	+1.7%	+40.3%	+42.9%	+11.3%
WALES	8	22	617	2	442	24	1059	£1265	£633	£416
		+29.4%	-0.8%		+2.6%	+26.3%	+0.6%	+9.5%	+7.5%	+9.2%
W MIDLANDS	25	234	2201	154	1798	388	3999	£1154	£659	£447
		-9.3%	-1.3%	-4.3%	-1.4%	-7.4%	-1.3%	+12.2%	+10.7%	+9.9%
E MIDLANDS	28	274	2080	441	2146	715	4226	£1108	£559	£474
		-0.4%	+1.5%	-5.2%	-0.7%	-3.4%	+0.4%	+6.6%	+5.3%	+8.5%
EAST ANGLIA	25	329	1751	239	2379	568	4130	£1116	£538	£457
		-8.9%	+2.5%	-5.2%	+1.6%	-7.3%	+2.0%	+3.1%	+6.6%	+5.8%
SOUTH & WEST	20	464	1554	159	1057	623	2611	£1174	£596	£392
		-5.3%	-2.0%	-8.1%	+1.4%	-6.0%	-0.6%	+15.6%	+8.4%	+3.1%
GREATER LONDON	48	132	4724	139	4450	271	9174	£1504	£880	£533
		-8.3%	+0.6%	-0.7%	+1.3%	-4.6%	+1.0%	+15.0%	+16.0%	+7.5%
SOUTH EAST	40	656	2581	367	4056	1023	6637	£1246	£728	£515
		-0.6%	+3.3%	-1.3%	+8.7%	-0.9%	+6.5%	+6.6%	+6.7%	+9.6%

ISAI  
NUMBERS AND FEES BY AREAS  
SPREAD OF PUPILS

TABLE 13C - SPREAD OF FEES



# ISAI

TABLE 13D FULL TIME STAFF

	GRADUATES			NON-GRADUATES		TOTAL
	Math	Sci.	Other	Qual.	Non-Qual.	
MEN	70	156	413	210	32	881
WOMEN	73	110	620	867	157	1,827

TABLE 13E PART TIME STAFF

	GRADUATES		NON-GRADUATES		TOTAL
	MEN	WOMEN	MEN	WOMEN	
Number	143	622	159	914	1,838
Aggregate number of hours per week.	1,356	7,810	1,385	10,882	21,431

TABLE 13F FULL TIME STAFF CHANGES

NUMBER	Coming from	Going to
Independent Schools	88	54
Maintained Schools	154	71
University, Polytechnic or Training Coll.	49	15
Industry, etc.	18	29
Other (Incl. Retirement)	112	214
TOTAL	401	383

## STAFFING

TABLE 13G ALL PUPILS AGED 16 OR OVER ON 31.8.85  
ANALYSED BY COURSE OF STUDY

			BOYS	GIRLS	
GCE 'A' level courses	Pupils on Post 'A' level studies		1	4	A
	Subjects in Maths/ Science group only	1st year	161	51	B
		2nd or later year	129	38	C
	Subjects in both Maths/ Science and other groups	1st year	76	105	D
		2nd or later year	79	78	E
	Other subjects only	1st year	97	205	F
		2nd or later year	107	174	G
	Pupils on GCE O level, CSE or GCSE courses		1,038	961	H
All other pupils aged 16 and over on 31.8.85		111	125	I	
TOTAL		1,799	1,741	J	

TABLE 13H ALL PUPILS IN FIFTH AND SIXTH YEARS  
ANALYSED BY COURSE OF STUDY

		(SCOTLAND)	
		BOYS	GIRLS
Fifth year pupils taking a Higher grade course in four or more subjects			
Fifth year pupils taking a Higher grade course in 3 subjects			
Sixth year pupils taking at least one subject in C.S.Y.S.			
Sixth year pupils taking at least one Advanced level subject			
Sixth year pupils taking at least one additional subject on Higher grade			
Sixth year pupils on Post Higher grade non-examinable course			
TOTAL			

## COURSES OF STUDY

# SOURCES OF ENTRY DESTINATION OF LEAVERS

TABLE 13I

## SOURCES OF ENTRY

		PREVIOUSLY AT SCHOOL		PREVIOUS SCHOOL OR FOREIGN	NO PREVIOUS SCHOOL	TOTAL
		IN U.K.	OVERSEAS			
AGE ON 31 AUGUST 1985	UNDER 8	547	760	45	110	3,379 4,841
	8-10	348	923	58	101	94 1,524
	11-12	827	1,285	43	111	47 2,313
	13-14	360	567	45	157	18 1,147
	15 and over	165	225	24	252	21 687
	TOTAL	2,247	5,760	215	731	3,559 10,512

TABLE 13K LEAVERS aged 15 and over on 31.8.85 who left during the year leading up to Census Day

			BOYS	GIRLS	TOTAL
Pupils who left to take Higher Education Courses in U.K. or Overseas	Entrants to Universities, Incl. Deferred Entry	Engineering/Technology	12	1	13
		Medicine, etc.	8	10	18
		Science	33	18	51
		All other Subjects	34	94	128
	Degree Courses elsewhere incl. B.Ed.	Engineering/Technology	4	0	4
		Science	6	4	10
		All other Subjects	36	45	81
	H.N.D. T.E.C. B.E.C. Courses	Engineering/Technology	21	1	22
		Science	10	1	11
		All other Subjects	58	86	144
	Other H.E. courses	67	93	160	
Pupils who left to continue Secondary Education elsewhere (including re-take exams) having taken any GCE/CSE exams.	To another Indep. School	78	215	293	
	To a Maintained School	526	684	1,210	
	To Overseas	67	48	115	
Other Pupils who left having taken any G.C.E./C.S.E. exams	For further training	338	354	692	
	For employment	428	225	651	
	Others	77	73	150	
Pupils who left NOT having taken any G.C.E./C.S.E. exams.	To another Indep. School	13	29	42	
	To a Maintained School	30	7	37	
		21	26	47	
	Others				
		TOTAL	1,867	2,012	3,879

TABLE 13J

## DESTINATION OF LEAVERS UNDER 15 ON 31.8.1985

		To Independent Schools	To L.E.A. Schools	To Schools Overseas	Unknown	TOTAL
Leaving aged at least 12 on 1.9.85	BOYS	200	316	57	64	637
	GIRLS	244	260	69	57	630
Leaving aged less than 12 on 1.9.85	BOYS	1,167	669	116	126	2,078
	GIRLS	1,096	617	168	112	1,993
TOTAL		2,707	1,862	410	359	5,338

# ALL NUMBER OF PUPILS

TABLE 14A

NUMBER OF PUPILS IN JANUARY 1986 AND CHANGES SINCE 1985

Figures for 1986 are printed in **BOLD** those for 1985 and % changes are printed below

AGE AT 31 AUG 85	BOYS		GIRLS		TOTAL
	BOARDERS	DAY	BOARDERS	DAY	
2	0	692	0	785	1,477
	0	569	0	665	1,234
		+21.6%		+18.0%	+19.7%
3	5	2,789	0	2,793	5,587
	0	2,534	0	2,697	5,231
		+10.1%		+3.6%	+6.8%
4	9	5,563	3	5,370	10,945
	1	5,273	1	5,128	10,403
	+800.0%	+5.5%	+200.0%	+4.7%	+5.2%
5	39	6,222	41	6,051	12,333
	15	6,204	9	5,797	12,025
	+160.0%	+0.3%	+355.6%	+4.4%	+2.7%
6	88	6,942	93	6,340	13,463
	89	6,495	52	5,931	12,567
	-1.1%	+6.9%	+78.8%	+6.9%	+7.1%
7	729	8,681	283	7,341	17,034
	764	8,278	264	7,133	16,439
	-4.6%	+4.9%	+7.2%	+2.9%	+3.6%
8	2,163	9,951	679	8,240	21,033
	2,195	9,842	686	7,822	20,545
	-1.5%	+1.1%	-1.0%	+5.3%	+2.4%
9	3,083	10,747	1,222	8,714	23,766
	3,260	11,145	1,217	8,757	24,379
	-5.4%	-3.6%	+0.4%	-0.5%	-2.5%
10	4,353	11,879	1,929	9,654	27,815
	4,534	12,097	1,982	9,628	28,241
	-4.0%	-1.8%	-2.7%	+0.3%	-1.5%
11	6,270	17,208	3,784	14,026	41,288
	6,469	17,071	3,640	13,826	41,006
	-3.1%	+0.8%	+4.0%	+1.4%	+0.7%
12	7,518	16,811	4,354	13,957	42,640
	7,888	17,052	4,580	13,870	43,390
	-4.7%	-1.4%	-4.9%	+0.6%	-1.7%
13	9,478	16,340	4,965	14,193	44,976
	9,957	16,610	5,113	14,216	45,896
	-4.8%	-1.6%	-2.9%	-0.2%	-2.0%
14	10,193	16,433	5,494	14,346	46,466
	9,742	15,625	4,988	13,545	43,900
	+4.6%	+5.2%	+10.1%	+5.9%	+5.8%
15	9,562	15,477	5,381	13,327	43,747
	10,130	15,115	5,286	12,907	43,438
	-5.6%	+2.4%	+1.8%	+3.3%	+0.7%
16	8,945	11,856	5,114	9,300	35,215
	8,981	11,594	5,029	9,077	34,681
	-0.4%	+2.3%	+1.7%	+2.5%	+1.5%
17	7,287	9,469	4,000	7,475	28,231
	7,381	9,612	3,781	7,047	27,821
	-1.3%	-1.5%	+5.8%	+6.1%	+1.5%
18	1,128	769	583	586	3,066
	1,122	875	573	462	3,032
	+0.5%	-12.1%	+1.7%	+26.8%	+1.1%
19+	127	80	97	69	373
	126	64	77	61	328
	+0.8%	+25.0%	+26.0%	+13.1%	+13.7%
TOTAL	70,977	167,909	38,022	142,567	419,475
	72,654	166,061	37,278	138,569	414,562
	-2.3%	+1.1%	+2.0%	+2.9%	+1.2%



# ALL NUMBERS AND FEES BY AREAS SPREAD OF FEES

TABLE 14B

ANALYSIS OF PUPIL NUMBERS AND AVERAGE TERMILY FEES  
(PERCENT CHANGES ARE BASED ON 1985 FIGURES)

AREA	No. of Schools	BOYS		GIRLS		TOTAL		Boarding Fee	Day Fee Boarding Schools	Day Fee Day Schools
		Board	Day	Board	Day	Board	Day			
ALL	1291	71062	168126	38044	142591	109106	310717	£1305	£ 808	£549
		-2.3%	+1.1%	+2.0%	+2.9%	-0.8%	+1.9%	+9.9%	+8.2%	+9.4%
SCOTLAND	53	3527	10689	1899	9290	5426	19979	£1328	£ 733	£574
		-0.3%	+1.2%	-1.6%	+2.3%	-0.7%	+1.7%	+9.2%	+8.5%	+11.0%
THE NORTH	183	6850	34954	3908	27773	10758	62727	£1250	£ 775	£503
		-2.5%	+1.2%	+1.9%	+2.7%	-0.9%	+1.8%	+9.2%	+9.1%	+8.6%
WALES	28	1629	2286	652	2123	2281	4409	£1224	£ 771	£469
		+1.5%	-2.9%	-1.5%	-0.4%	+0.6%	-1.7%	+8.3%	+7.8%	+10.5%
W MIDLANDS	137	8047	15497	4422	13471	12469	28968	£1283	£ 842	£550
		-2.1%	+1.4%	+1.9%	+1.4%	-0.7%	+1.4%	+9.0%	+8.7%	+16.5%
E MIDLANDS	159	9788	18072	5531	16960	15319	35032	£1309	£ 788	£547
		+0.3%	-2.1%	+2.5%	+2.9%	+1.1%	+0.3%	+8.2%	+6.6%	+8.8%
EAST ANGLIA	93	4775	10535	2472	9398	7247	19933	£1262	£ 804	£495
		-0.7%	+1.7%	+2.4%	+2.0%	+0.3%	+1.8%	+8.3%	+10.0%	+8.0%
SOUTH & WEST	145	11910	13892	6831	11554	18741	25446	£1366	£ 780	£483
		-2.3%	+1.6%	-1.6%	+5.0%	-2.0%	+3.1%	+14.3%	+7.5%	+8.0%
GREATER LONDON	156	2382	28353	704	24939	3086	53292	£1309	£ 851	£618
		-12.8%	+2.4%	-6.4%	+1.7%	-11.4%	+2.1%	+8.6%	+7.2%	+8.4%
SOUTH EAST	324	21247	28013	11388	25205	32635	53218	£1321	£ 854	£558
		-3.2%	+2.2%	+5.6%	+5.1%	-0.3%	+3.6%	+9.6%	+9.1%	+8.9%
IRELAND	13	907	5835	237	1878	1144	7713	£1104	£ 526	£384
		-1.2%	-2.2%	-3.7%	+1.9%	-1.7%	-1.3%	+7.1%	+3.8%	+15.7%



The leaflets and other publications listed below are available from National ISIS, 56 Buckingham Gate, London SW1E 6AG and are supplied on receipt of **2 first class stamps for each, except where the price is stated.**

### **NATIONAL ISIS PUBLICATIONS**

**PLAN EARLY** — an introductory leaflet for parents interested in sending their children to independent schools.

**INDEPENDENT SCHOOLS** — would they be right for my child?

**THE RIGHT START** — what preparatory schools can offer your child.

**SCHOOL FEES** — some ways of planning ahead to reduce costs.

**HOW GRANDPARENTS CAN HELP** — with school fees.

**SCHOLARSHIPS AND GRANTS** — some ways of receiving help with school fees.

**ASSISTED PLACES SCHOOLS** — a list of secondary schools which give grants under the Government's Assisted Places Scheme.

**BOYS SENIOR SCHOOLS WHICH ALSO ADMIT GIRLS** — a detailed list.

**SCHOOLS WHICH ADMIT PUPILS AGED 7 AND UNDER** — a detailed list.

**SCHOOLS OFFERING CONCESSIONS TO SERVICE FAMILIES** — a detailed list.

**SCHOOLS OFFERING A LEVEL RE-TAKE COURSES** — a detailed list

**QUESTIONS TO ASK** when you visit a school.

**BOARDING SCHOOLS DIRECTORY** — details of 800 schools which admit boarders. Price £2.50 (including postage).

**PRIVATE EDUCATION IN THE EEC.** — Price £1 (including postage).

**PRIVATE EDUCATION IN THE U.S.A. AND CANADA** — Price £2 (including postage).

**GOOD COMMUNICATIONS GUIDE** — a guide for school public relations and marketing. Price £1 (including postage).

### **CHOOSING YOUR INDEPENDENT SCHOOL**

A guide for parents to more than 1,350 schools in membership of National ISIS with basic details about fees, pupil numbers and entry requirements. Also maps showing where the schools are and 50 pages of guidance on how to choose a school.

**PRICE:** Only £3.50 available from bookshops or direct (for £4) from National ISIS, 56 Buckingham Gate, London SW1 6AG.

**Analysis by Monkton Combe Computing Service, 1 Church Cottages, Monkton Combe, Bath BA2 7HB.**

**Printed by Ralph Allen Press Ltd., 4/5 Milk Street, Bath**

**Published April 1986**